

Aluminum Dual Rated Lugs - Four Hole Tongue Types LA4M4 and LA4D4

For use with four copper or aluminum conductors

- Manufactured from high strength aluminum alloy extrusion
- Electro-tin plated to ensure minimum contact resistance and protection against corrosion when used with copper wire
- Four hole mounting pad allows for maximum surface contact in heavy duty applications
- Larger connector sizes utilize tandem set screws that provide superior mechanical performance*
- Connectors are rated for 600 V, 90°C applications
- The use of oxide inhibitor is recommended for all aluminum terminations

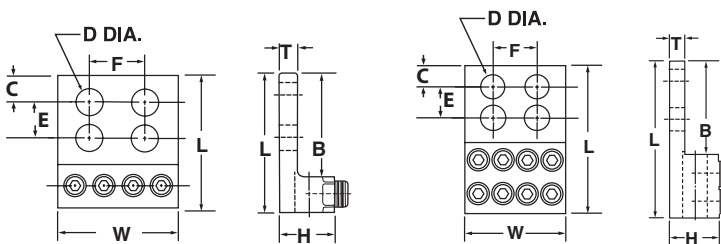
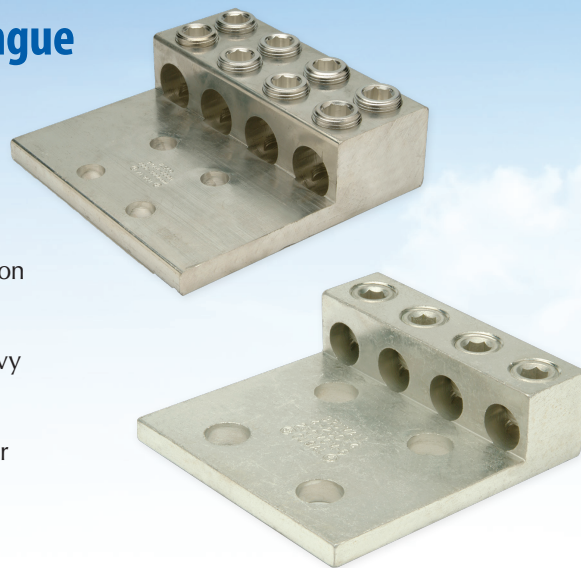


FIG. 1

FIG. 2

CATALOG NUMBER	FIG. NO.	CONDUCTOR RANGE	APPROXIMATE DIMENSIONS (IN.)								MTG. BOLT SIZE	HEX SIZE	
			L	W	H	T	B	C	D (DIA.)	E			F
LA4M4-250	1	6 Str. - 250 kcmil	4.00	4.05	1.19	.31	3.00	.63	.56	1.75	1.75	1/2	5/16
LA4M4-350	1	6 Str. - 350 kcmil	4.50	4.72	1.38	.31	3.25						3/8
*LA4D4-600	2	2 Str. - 600 kcmil	5.50	5.33	1.50	.38	3.25						3/8
*LA4D4-800	2	350 - 800 kcmil	6.19	7.16	1.88	.56	3.44						1/2