

# INSTALLER'S GUIDE

18-HD10D1-1  
DFST-IN-1C

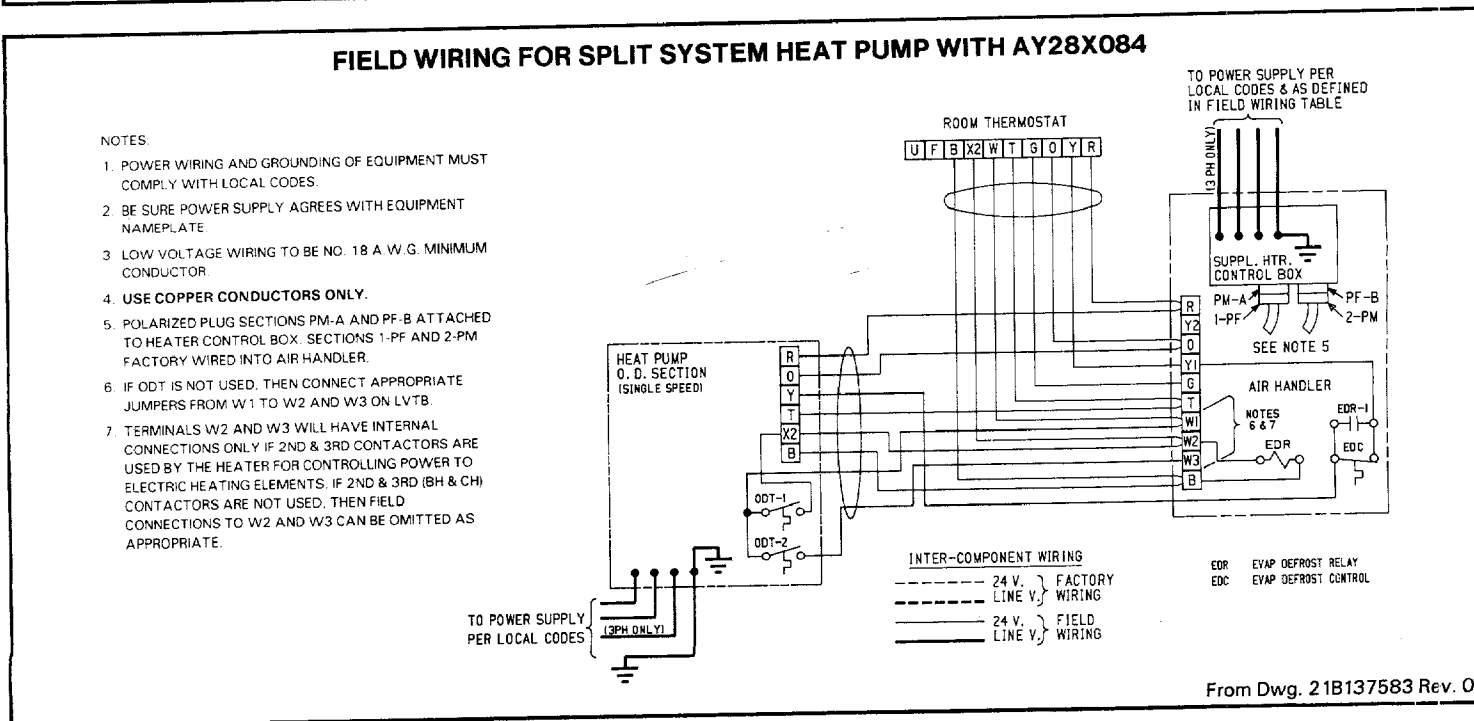
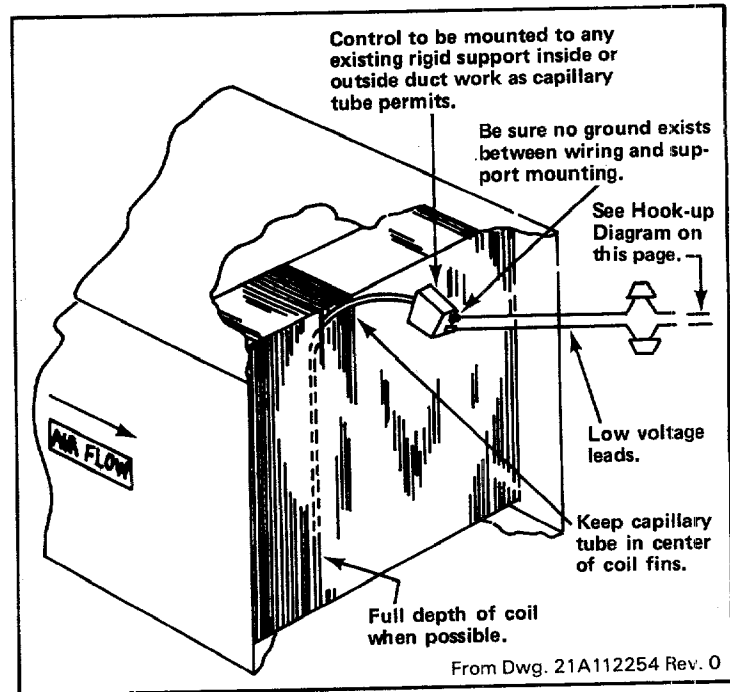
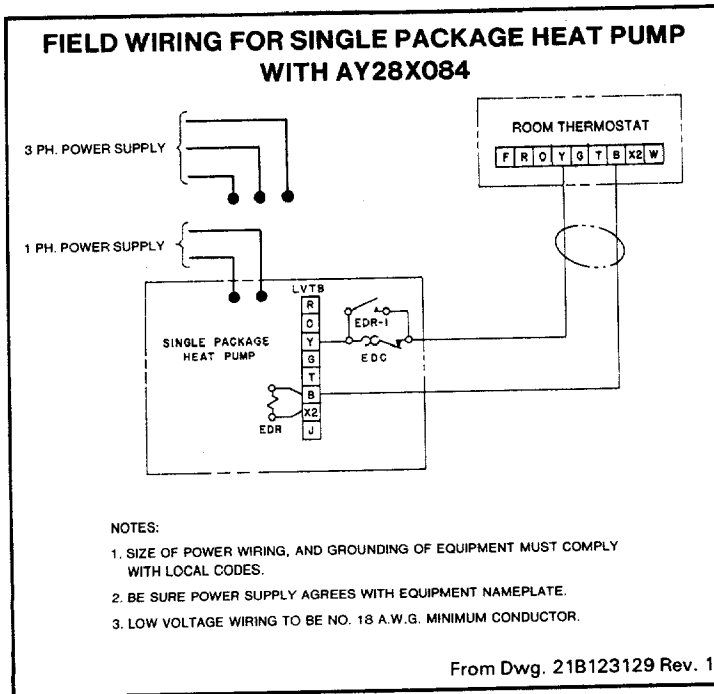
## (AY28X079 & 084) LOW AMBIENT COOLING CONTROL

### GENERAL:

This control is installed in the evaporator (indoor) coil. Its purpose is to cycle the compressor when the evaporator frosts under low outdoor ambient cooling conditions.

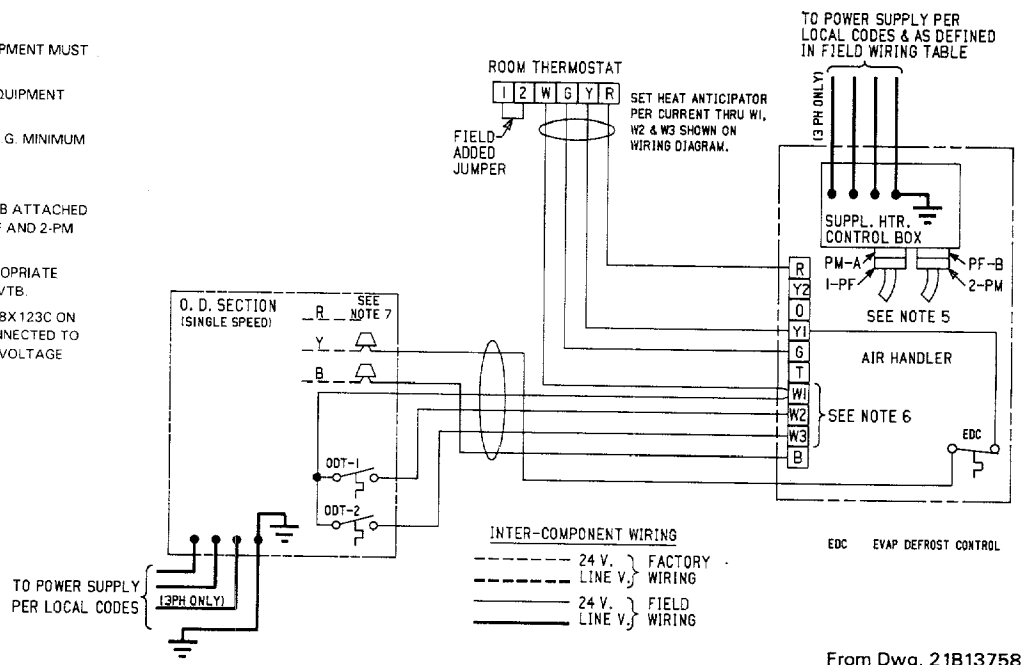
When installed on an "A" Coil, follow procedure below on either bank of the coil. For low ambient cooling performance, consult Service Manual.

*NOTE: Hook-up diagrams for heat pumps on this page, hook-ups for cooling on back page.*



## FIELD WIRING DIAGRAM FOR SPLIT COOLING WITH AY28X079

- NOTES:
- POWER WIRING AND GROUNDING OF EQUIPMENT MUST COMPLY WITH LOCAL CODES.
  - BE SURE POWER SUPPLY AGREES WITH EQUIPMENT NAMEPLATE.
  - LOW VOLTAGE WIRING TO BE NO. 18 A. W. G. MINIMUM CONDUCTOR.
  - USE COPPER CONDUCTORS ONLY.
  - POLARIZED PLUG SECTIONS PM-A AND PF-B ATTACHED TO HEATER CONTROL BOX. SECTIONS 1-PF AND 2-PM FACTORY WIRED INTO AIR HANDLER.
  - IF ODT IS NOT USED, THEN CONNECT APPROPRIATE JUMPERS FROM W1 TO W2 AND W3 ON LVTB.
  - TO USE LOW AMBIENT COOLING KIT BA Y28X 123C ON 3 PHASE MODELS, "R" LEAD MUST BE CONNECTED TO "Y" LEAD IN ORDER TO SUPPLY CONTROL VOLTAGE FOR KIT.

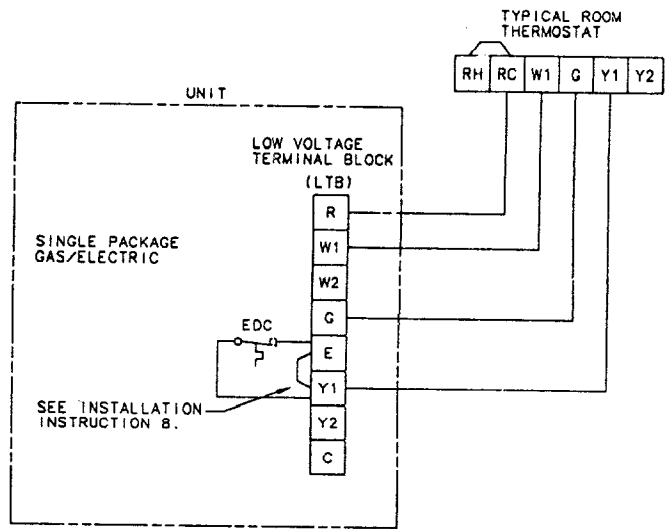


From Dwg. 21B137584 Rev. 0

## FIELD WIRING DIAGRAM FOR BYC024H, 030H, 036H, 042H & YCC024A, 030A, 036A, 042A, 048A WITH AY28X079

### EDC INSTALLATION INSTRUCTIONS

- DISCONNECT POWER TO UNIT.
- REMOVE BOTH TOP COVERS FROM UNIT.
- SPREAD EVAPORATOR FINS TO ALLOW INSERTION OF EVAPORATOR DEFOST CONTROL (EDC) CAPILLARY TUBE INTO FULL DEPTH OF COIL. EDC CAPILLARY TUBE MUST BE LOCATED 2 TO 6 INCHES FROM HEADER END OF COIL (BETWEEN THE 2 ROWS OF TUBES). LOCATING HOLES ARE PROVIDED ON TOP EVAPORATOR COIL BLOCKOFF ON BYC024H & 030H UNITS.
- LUBRICATE EDC CAPILLARY TUBE AND INSERT INTO FULL DEPTH OF COIL.
- MOUNT EDC ON TOP CORNER OF INDOOR/OUTDOOR PARTITION PANEL.
- ALL WIRING AND GROUNDING OF EQUIPMENT MUST COMPLY WITH LOCAL CODES.
- WIRING FROM EDC TO LTB TO BE 18 AWG MINIMUM CONDUCTOR, WITH A MINIMUM INSULATION RATING EQUAL TO UNIT NAMEPLATE VOLTAGE.
- REMOVE JUMPER BETWEEN E & Y1 ON THE LTB AND WIRE EDC AS SHOWN.
- ALL WIRING SHOWN IS 24V FIELD SUPPLIED WIRING.
- SEE UNIT INSTALLERS GUIDE FOR OTHER UNIT WIRING REQUIREMENTS.



From Dwg. B2306-3567

Library	Service Literature
Product Section	Unitary
Product	Unitary Accessories
Model	Econ, Dampers, Motor, Low Ambient
Literature Type	Installer's Guide
Sequence	1C
Date	July 1988
File No.	SV-UN-ACC-DFST-IN-1C 7/88
Supersedes	DFST-IN-1B

dwg. no. 21X113215 P08

P.I.