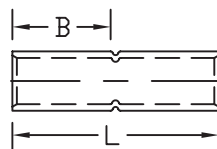


## Crimp Splice - Standard Barrel

### Type BCU

- Manufactured from high conductivity seamless copper tubing
- Tin-plated to inhibit corrosion
- Beveled entry for easy cable insertion
- Positive cable stops to ensure proper insertion of conductors to full depth
- Color coded barrels are marked with die index numbers
- Connectors are suitable for voltages up to 35 KV if taped according to accepted practices, 5 KV is the maximum voltage level in all bare splice applications
- Connectors are UL listed and CSA certified with Penn-Union, Burndy T&B, Huskie, Greenlee and Versa-Crimp® style tooling



### BCU DIMENSIONS & INSTALLATION TOOLING INFORMATION

CATALOG NUMBER	COPPER CONDUCTOR SIZE	FIGURE DIMENSIONS (IN.)		COLOR CODE	INSTALLATION TOOLING			WIRE STRIP LENGTH
		INSERTION LENGTH "B"	OVERALL LENGTH "L"		PENN-UNION DIELESS MECHANICAL TOOLS	BURNDY DIE INDEX NO.	PENN-UNION DIE CATALOG NO.	
BCU-8	8 AWG	.53	1.06	Red	TDM-250 or TDM-500	6	T-49	9/16"
BCU-6	6 AWG	.78	1.75	Blue		7	T-7	15/16"
BCU-5	5 AWG	.78	1.75	Blue		7	T-7	15/16"
BCU-4	4 AWG	.78	1.75	Gray		8	T-8	15/16"
BCU-3	3 AWG	.88	1.88	White		9	T-9	1"
BCU-2	2 AWG	.84	1.87	Brown		10	T-10	1"
BCU-1	1 AWG	.88	1.88	Green		11	T-11	1"
BCU-1/0	1/0 AWG	.88	1.88	Pink		12	T-12	1"
BCU-2/0	2/0 AWG	.94	2.00	Black		13	T-13	1-1/16"
BCU-3/0	3/0 AWG	1.00	2.13	Orange		14	T-14	1-1/8"
BCU-4/0	4/0 AWG	1.00	2.13	Purple		15	T-15	1-1/8"
BCU-025	250 kcmil	1.03	2.25	Yellow		16	T-16	1-3/16"
BCU-030	300 kcmil	1.06	2.25	White		17	T-17	1-3/16"
BCU-035	350 kcmil	1.13	2.38	Red		18	T-18	1-1/4"
BCU-040	400 kcmil	1.19	2.50	Blue		19	T-19	1-5/16"
BCU-045	450 kcmil	1.38	2.88	Blue		19	T-19	1-1/2"
BCU-050	500 kcmil	1.38	2.88	Brown	20	T-20	1-1/2"	
BCU-060	600 kcmil	1.38	2.88	Green	22	T-22	1-1/2"	
BCU-065	650 kcmil	1.38	2.88	Pink	300	T-300	1-1/2"	
BCU-075	750 kcmil	1.63	3.38	Black	24	T-24	1-3/4"	
BCU-080	800 kcmil	1.59	3.37	Orange	25	T-25P	1-3/4"	
BCU-100	1000 kcmil	1.88	3.88	White	27	T-27P	2"	
BCU-150	1500 kcmil	2.00	4.13	Green	31	T-31P	2-1/8"	
BCU-200	2000 kcmil	2.22	4.62	Brown	34	-	2-3/8"	

- Connectors from 8 AWG - 2000 kcmil are UL listed per UL486A-B and CSA certified per C22.2 No.65 for POWER applications
- Connectors from 8 AWG - 500 kcmil are UL listed for grounding, bonding and direct burial applications per UL467
- Connectors from 8 AWG - 250 kcmil are CSA certified for grounding, bonding and direct burial applications per C22.2 No.41