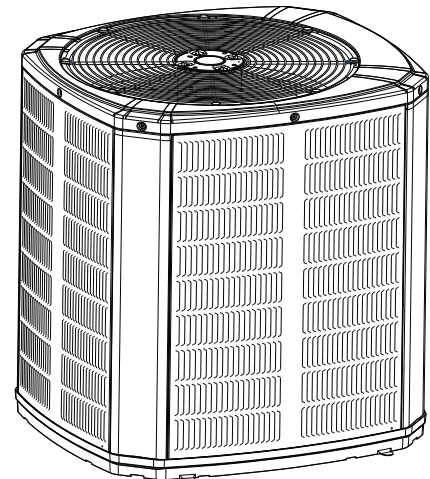


# Submittal

## American Standard Link Variable Speed Heat Pump

4A6V7X36A1000A

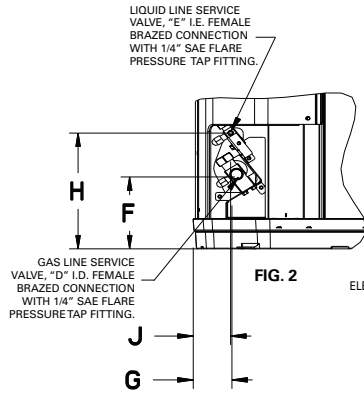


*Note: "Graphics in this document are for representation only. Actual model may differ in appearance."*

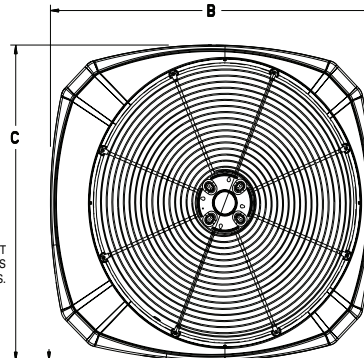


*The Diagnostics Mobile App is available by scanning a QR code located inside this unit or by searching for the Trane or American Standard Diagnostics App in your App Store<sup>®</sup>. This system must include a A/T HUI2360A200U thermostat and a TSYS2C60A2VVU system controller to operate and is Link communicating only.*

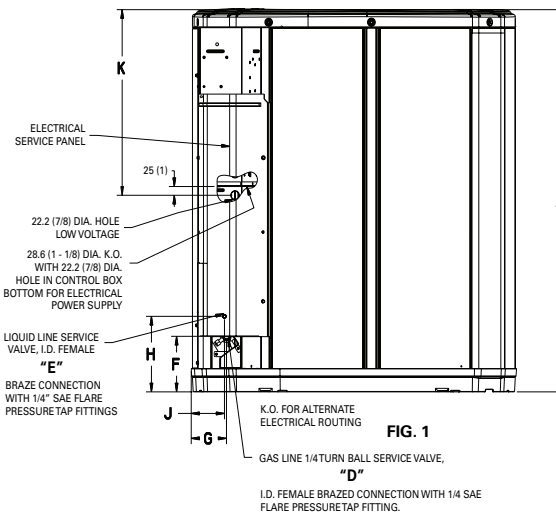
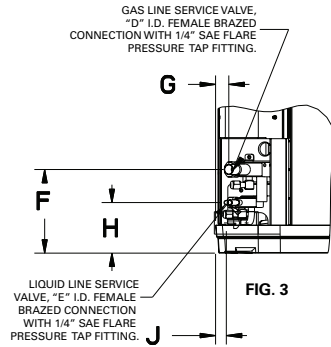
# Outline Drawing



ELECTRICAL AND REFRIGERANT COMPONENT CLEARANCES PER PREVAILING CODES.  
SERVICE PANEL



TOP DISCHARGE AREA SHOULD BE UNRESTRICTED FOR AT LEAST 1524 (5 FEET) ABOVE UNIT. UNIT SHOULD BE PLACED SO ROOF RUN-OFF WATER DOES NOT POUR DIRECTLY ON UNIT, AND SHOULD BE AT LEAST 305 (12") FROM WALL AND ALL SURROUNDING SHRUBBERY ON TWO SIDES. OTHER TWO SIDES UNRESTRICTED



Model	Base	A	B	C	D	E	F	G	H	J	K
4A6V7X36A	3	1035 (40-3/4)	829 (32-5/8)	756 (29-3/4)	19-3/4	10-3/8	127 (5)	76 (3)	197 (7-3/4)	57 (2-1/4)	813 (32)

SOUND POWER LEVEL											
Model	Mode	Speed	A-Weighted Sound Power Level [dB(A)]	Full Octave Sound Power [dB]							
				63 Hz	125 Hz	250 Hz	500 Hz	1000 Hz	2000 Hz	4000 Hz	8000 Hz
4A6V7X36A	Cool	Min	56	71.5	51.5	54.7	54.4	52.2	43.1	36.8	38.5
	Cool	Max	71	74.1	69.4	65.9	70.5	65.1	59.4	54.2	49.5
	Heat	Min	61	68.3	52.1	53.9	57.6	55.1	52.9	45.1	47.8
	Heat	Max	75	78.7	70.3	76.3	73.0	68.7	61.1	57.3	53.6

Note: Rated in accordance with AHRI Standard 270-2008

# Product Specifications

<b>OUTDOOR UNIT</b> <sup>(a)</sup> <sup>(b)</sup>	4A6V7X36A1000A
POWER CONNS. — V/PH/HZ <sup>(c)</sup>	208/230/1/60
MIN. BRCH. CIR. AMPACITY	27.0
BR. CIR. PROT. RTG. — MAX. (AMPS)	30
<b>COMPRESSOR</b>	SCROLL
NO. USED — NO. SPEEDS	1-VARIABLE
R.L. AMPS <sup>(d)</sup> — L.R. AMPS	18.1 — 10.2
<b>FACTORY INSTALLED</b>	
START COMPONENTS <sup>(e)</sup>	NA
INSULATION/SOUND BLANKET	YES
COMPRESSOR HEAT	YES
<b>OUTDOOR FAN</b>	
DIA. (IN.) — NO. USED	23 — 1
TYPE DRIVE — NO. SPEEDS	DIRECT — VARIABLE
CFM @ 0.0 IN. W.G. <sup>(f)</sup>	2850
NO. MOTORS — HP	1 — 1/3
MOTOR SPEED R.P.M.	200 — 1200
VOLTS/PH/HZ	208/230/1/60
F.L. AMPS	1.35
<b>OUTDOOR COIL — TYPE</b>	SPINE FIN™
ROWS — F.P.I.	1 — 24
FACE AREA (SQ. FT.)	23.75
TUBE SIZE (IN.)	3/8
<b>REFRIGERANT</b>	R410-A
LBS. — R-410A (O.D. UNIT) <sup>(g)</sup>	8 lb - 13 oz
FACTORY SUPPLIED	YES
LINE SIZE — IN. O.D. GAS <sup>(h)</sup>	3/4
LINE SIZE — IN. O.D. LIQ. <sup>(h)</sup>	3/8
<b>CHARGING SPECIFICATIONS</b>	
SUBCOOLING	10°
<b>DIMENSIONS</b>	H X W X D
CRATED (IN.)	46 X 30 X 33
<b>WEIGHT</b>	
SHIPPING (LBS.)	238
NET (LBS.)	217

<sup>(a)</sup> Certified in accordance with the Air-Source Unitary Air-conditioner Equipment certification program, which is based on AHRI standard 210/240.

<sup>(b)</sup> Rated in accordance with AHRI standard 270.

<sup>(c)</sup> Calculated in accordance with Natl. Elec. Codes. Use only HACR circuit breakers or fuses.

<sup>(d)</sup> This value shown for compressor RLA on the unit nameplate and on this specification sheet is used to compute minimum branch circuit ampacity and max. fuse size. The value shown is the branch circuit selection current.

<sup>(e)</sup> No means no start components. Yes means quick start kit components. PTC means positive temperature coefficient starter.

<sup>(f)</sup> Standard Air — Dry Coil — Outdoor

<sup>(g)</sup> This value approximate. For more precise value see unit nameplate.

<sup>(h)</sup> Max. linear length 150 ft.; Max. lift — Suction 50 ft.; Max. lift — Liquid 50 ft.

## Mechanical Specification Options

### General

This unit is designed to operate at outdoor ambient temperatures from 45° F to 120° F in cooling. From — 10° F to 66° F in heating (heat pumps only). Only AHRI approved indoor matches are approved for use with these models.

### American Standard Link Heat Pumps

This outdoor unit contains the American Standard Link Heat Pumps digital communication with Plug-n-Play set up.

### Casing

Unit casing is constructed of heavy gauge. G60 galvanized steel and painted with a weather-resistant powder paint on all louvered panels and prepaint on all other panels. Corrosion and weatherproof CMBP-G30 DuraBase™.

### Refrigerant Controls

Refrigeration system controls include condenser fan, compressor inverter drive and high and low pressure switches. A factory supplied, field installed filter is standard.

### Compressor

Inverter driven scroll compressor with 25 to 100% output capacity on heat pumps and 30 to 100% output capacity on air conditioners. Noise enclosure minimizes sound levels and built in compressor protection protects compressor will reduce operating speed and current draw to maintain operation while protecting the compressor.

### Condenser Coil

The Spine Fin™ outdoor coil provides low airflow resistance and efficient heat transfer. The coil is protected on all four sides by louvered panels.

### Low Ambient Cooling

As manufactured, this system has built in freeze protection that will allow cooling operation below 45°F but will reduce capacity or shut down completely to prevent operation under adverse conditions.

### Comfort Control

This system must include a A/T HUI2360A200U thermostat and a TSYS2C60A2VVU system controller to operate and is Link communicating only.

*American Standard*<sup>®</sup>  
HEATING & AIR CONDITIONING

About American Standard Heating and Air Conditioning  
American Standard has been creating comfortable and affordable living environments for more than a century. For more information, please visit [www.americanstandardair.com](http://www.americanstandardair.com).



The AHRI Certified mark indicates company participation in the AHRI Certification program. For verification of individual certified products, go to [ahridirectory.org](http://ahridirectory.org).

The manufacturer has a policy of continuous data improvement and it reserves the right to change design and specifications without notice. We are committed to using environmentally conscious print practices.

4A6V7X36A-SUB-1A-EN 20 Apr 2023  
Supersedes (New)

©2023 American Standard Heating and Air Conditioning