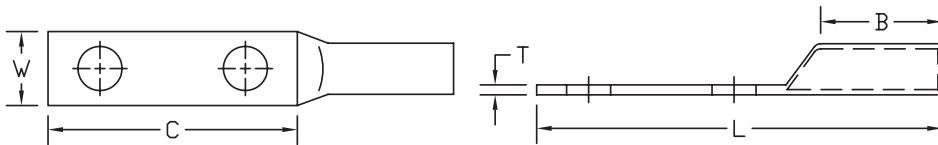


# COPPER COMPRESSION LUGS

## Long Barrel - Two Hole Tongue with Closed Transition

### Type BBLU-D

- Manufactured from high conductivity seamless copper tubing
- Tin-plated to inhibit corrosion
- Beveled entry for easy cable insertion
- Closed transition protects end of cable from environmental conditions
- Two hole mounting pad assures maximum secureness
- Long barrel provides high pull out force and added secureness for improved mechanical and electrical properties
- Color coded barrels are marked with die index numbers
- Connectors are suitable for voltages up to 35 KV
- 45° and 90° angles are UL listed and CSA certified
- Connectors are UL listed and CSA certified with Penn-Union, Burndy, T&B, Huskie, Greenlee and Versa-Crimp® style tooling



### BBLU-D DIMENSIONS & INSTALLATION TOOLING INFORMATION

CATALOG NUMBER	COPPER CONDUCTOR SIZE	STUD HOLE SIZE	FIGURE DIMENSIONS (IN.)						INSTALLATION TOOLING							
			STUD HOLE SPACING	TONGUE WIDTH "W"	TONGUE LENGTH "C"	TONGUE THICKNESS "T"	BARREL LENGTH "B"	OVERALL LENGTH "L"	COLOR CODE	PENN-UNION DIELESS MECHANICAL TOOLS	BURNDY DIE INDEX NO. /TOOL	PENN-UNION DIE CATALOG NO.	WIRE STRIP LENGTH			
BBLU-8D-2TC14	8 AWG	1/4"	.63	.41	1.22	.08	.94	2.44	Red	TDM-250 or TDM-500	6	T-49	1"			
BBLU-8D-2TC14E2		1/4"	.75	.41	1.36	.08	.94	2.58								
BBLU-8D-2TC38E3		3/8"	.81	.56	1.83	.06	.94	3.05								
BBLU-8D-2TC38		3/8"	1.00	.56	1.83	.06	.94	3.05								
BBLU-6D-2TC14	6 AWG	1/4"	.63	.41	1.22	.09	1.13	2.60	Blue	TDM-250 or TDM-500	7	T-7	1-3/16"			
BBLU-6D-2TC14E2		1/4"	.75	.41	1.36	.09	1.13	2.74					-	Y644HS	-	1"
BBLU-6D-2TC38E2		3/8"	.75	.61	1.58	.07	.94	2.74		TDM-250 or TDM-500	7	T-7	1-3/16"			
BBLU-6D-2TC38E3		3/8"	.81	.61	1.83	.06	1.13	3.21					-	Y644HS	-	1-1/16"
BBLU-6D-2TC38		3/8"	1.00	.61	1.83	.06	1.13	3.21					-	Y644HS	-	1-1/16"
BBLU-6DN		1/2"	1.75	.70	2.77	.09	1.00	3.92								
BBLU-5D-2TC14	5 AWG	1/4"	.63	.44	1.22	.08	1.13	2.60	Blue	TDM-250 or TDM-500	7	T-7	1-3/16"			
BBLU-5D-2TC14E2		1/4"	.75	.44	1.36	.08	1.13	2.74								
BBLU-5D-2TC38E2		3/8"	.75	.61	1.58	.07	1.13	2.96								
BBLU-5D-2TC38E3		3/8"	.81	.61	1.83	.07	1.13	3.21								
BBLU-5D-2TC38		3/8"	1.00	.61	1.83	.07	1.13	3.21								
BBLU-4D-2TC14	4 AWG	1/4"	.63	.50	1.22	.09	1.13	2.60	Gray	TDM-250 or TDM-500	8	T-8	1-1/4"			
BBLU-4D-2TC14E2		1/4"	.75	.50	1.36	.09	1.13	2.74								
BBLU-4D-2TC38E2		3/8"	.75	.61	1.56	.08	1.13	2.96								
BBLU-4D-2TC38E3		3/8"	.81	.61	1.83	.08	1.13	3.21								
BBLU-4D-2TC38		3/8"	1.00	.61	1.81	.08	1.13	3.21								
BBLU-4D1		1/2"	1.75	.92	3.00	.10	1.13	4.38								

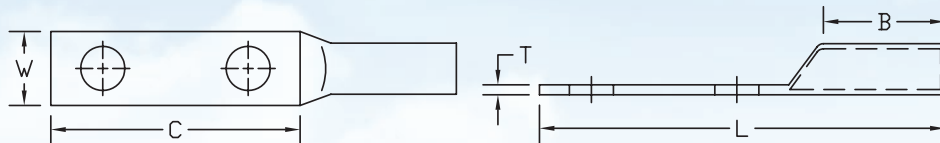
## BBLU-D DIMENSIONS & INSTALLATION TOOLING INFORMATION (CONTINUED)

CATALOG NUMBER	COPPER CONDUCTOR SIZE	STUD HOLE SIZE	FIGURE DIMENSIONS (IN.)						INSTALLATION TOOLING				WIRE STRIP LENGTH
			STUD HOLE SPACING	TONGUE WIDTH "W"	TONGUE LENGTH "C"	TONGUE THICKNESS "T"	BARREL LENGTH "B"	OVERALL LENGTH "L"	COLOR CODE	PENN-UNION DIELESS MECHANICAL TOOLS	BURNDY DIE INDEX NO. /TOOL	PENN-UNION DIE CATALOG NO.	
BBLU-3D-2TC14	3 AWG	1/4"	.63	.65	1.22	.20	1.13	2.60	White	TDM-250 or TDM-500	9	T-9	1-1/4"
BBLU-3D-2TC14E2		1/4"	.75	.65	1.36	.20	1.13	2.74					
BBLU-3D-2TC38E2		3/8"	.75	.65	1.58	.20	1.13	2.96					
BBLU-3D-2TC38E3		3/8"	.81	.65	1.83	.20	1.13	3.21					
BBLU-3D-2TC38		3/8"	1.00	.65	1.83	.20	1.13	3.21					
BBLU-3D		5/16"	.88	.53	1.63	.09	1.13	3.03					
BBLU-2D	2 AWG	5/16"	.75	.59	1.58	.11	1.25	3.11	Brown	TDM-250 or TDM-500	10	T-10	1-5/16"
BBLU-2D-2TC14		1/4"	.63	.59	1.22	.11	1.25	2.75					
BBLU-2D-2TC14E2		1/4"	.75	.59	1.36	.11	1.25	2.89					
BBLU-2D-2TC38E2		3/8"	.75	.59	1.58	.11	1.25	3.11					
BBLU-2D-2TC38E3		3/8"	.81	.59	1.83	.11	1.25	3.36					
BBLU-2D-2TC38		3/8"	1.00	.59	1.83	.11	1.25	3.36					
BBLU-2D-2NTC38		3/8"	1.75	.59	2.58	.11	1.25	4.11					
BBLU-2D6		1/2"	1.75	.81	3.00	.10	1.25	4.53					
BBLU-1D	1 AWG	5/16"	.88	.67	1.63	.11	1.38	3.38	Green	TDM-250 or TDM-500	11	T-11	1-1/2"
BBLU-1D-2TC14		1/4"	.63	.67	1.22	.10	1.38	2.94					
BBLU-1D-2TC14E2		1/4"	.75	.67	1.36	.10	1.38	3.08					
BBLU-1D-2TC38E2		3/8"	.75	.67	1.58	.10	1.38	3.30					
BBLU-1D-2TC38E3		3/8"	.81	.67	1.83	.10	1.38	3.55					
BBLU-1D-2TC38		3/8"	1.00	.67	1.83	.10	1.38	3.55					
BBLU-1D2	1/2"	1.75	.70	2.77	.09	1.20	4.12	-	Y644HS	-	1-5/16"		
BBLU-1/0D	1/0 AWG	5/16"	.88	.73	1.59	.13	1.38	3.31	Pink	TDM-250 or TDM-500	12	T-12	1-1/2"
BBLU-1/0D-2TC14		1/4"	.63	.74	1.22	.11	1.38	2.94					
BBLU-1/0D-2TC14E2		1/4"	.75	.74	1.36	.11	1.38	3.08					
BBLU-1/0D-2TC38E2		3/8"	.75	.74	1.58	.11	1.38	3.30					
BBLU-1/0D-2TC38E3		3/8"	.81	.74	1.83	.11	1.38	3.55					
BBLU-1/0D-2TC38		3/8"	1.00	.74	1.83	.11	1.38	3.55					
BBLU-1/0D-2NTC38		3/8"	1.75	.74	2.58	.11	1.38	4.30					
BBLU-1/0D3		1/2"	1.75	.81	3.00	.10	1.38	4.63					
BBLU-2/0D-2TC14	2/0 AWG	1/4"	.63	.82	1.22	.12	1.50	3.06	Black	TDM-250 or TDM-500	13	T-13	1-5/8"
BBLU-2/0D-2TC14E2		1/4"	.75	.82	1.36	.12	1.50	3.20					
BBLU-2/0D-2TC38E2		3/8"	.75	.82	1.58	.12	1.50	3.42					
BBLU-2/0D-2TC38E3		3/8"	.81	.82	1.83	.12	1.50	3.67					
BBLU-2/0D-2TC38		3/8"	1.00	.82	1.83	.12	1.50	3.67					
BBLU-2/0D		1/2"	1.75	.82	3.00	.12	1.50	4.84					
BBLU-3/0D-2TC14	3/0 AWG	1/4"	.63	.89	1.22	.13	1.50	3.13	Orange	TDM-250 or TDM-500	14	T-14	1-5/8"
BBLU-3/0D-2TC14E2		1/4"	.75	.89	1.36	.13	1.50	3.27					
BBLU-3/0D-2TC38E2		3/8"	.75	.89	1.58	.13	1.50	3.49					
BBLU-3/0D-2TC38E3		3/8"	.81	.89	1.83	.13	1.50	3.74					
BBLU-3/0D-2TC38		3/8"	1.00	.89	1.83	.13	1.50	3.74					
BBLU-3/0D		1/2"	1.75	.89	3.00	.13	1.50	4.91					
BBLU-4/0D-2TC14	4/0 AWG	1/4"	.63	1.00	1.22	.14	1.63	3.32	Purple	TDM-250 or TDM-500	15	T-15	1-3/4"
BBLU-4/0D-2TC14E2		1/4"	.75	1.00	1.36	.14	1.63	3.46					
BBLU-4/0D-2TC38E2		3/8"	.75	1.00	1.58	.14	1.63	3.68					
BBLU-4/0D-2TC38E3		3/8"	.81	1.00	1.83	.14	1.63	3.93					
BBLU-4/0D-2TC38		3/8"	1.00	1.00	1.83	.14	1.63	3.93					
BBLU-4/0D-2NTC38		3/8"	1.75	1.00	2.58	.14	1.63	4.68					
BBLU-4/0D-2TC716E2		7/16"	.75	1.00	1.83	.14	1.63	3.93					
BBLU-4/0D		1/2"	1.75	1.00	3.00	.14	1.63	5.10					
BBLU-025D-2TC14E2	250 kcmil	1/4"	.75	1.09	1.36	.16	1.63	3.58	Yellow	TDM-250 or TDM-500	16	T-16	1-3/4"
BBLU-025D-2TC38E3		3/8"	.81	1.09	1.83	.16	1.63	4.05					
BBLU-025D-2TC38		3/8"	1.00	1.09	1.83	.16	1.63	4.05					
BBLU-025D		1/2"	1.75	1.09	3.00	.16	1.63	5.13					
BBLU-030D-2TC14E2	300 kcmil	1/4"	.75	1.19	1.36	.16	2.00	3.95	White	TDM-500	17	T-17	2-1/8"
BBLU-030D-2TC38		3/8"	1.00	1.19	1.83	.16	2.00	4.42					
BBLU-030D		1/2"	1.75	1.19	3.00	.16	2.00	5.59					

CONTINUED ON PAGE 26

# COPPER COMPRESSION LUGS

## BBLU-D DIMENSIONS & INSTALLATION TOOLING INFORMATION (CONTINUED)



CATALOG NUMBER	COPPER CONDUCTOR SIZE	STUD HOLE SIZE	FIGURE DIMENSIONS (IN.)						INSTALLATION TOOLING				
			STUD HOLE SPACING	TONGUE WIDTH "W"	TONGUE LENGTH "C"	TONGUE THICKNESS "T"	BARREL LENGTH "B"	OVERALL LENGTH "L"	COLOR CODE	PENN-UNION DIELESS MECHANICAL TOOLS	BURNDY DIE INDEX NO. /TOOL	PENN-UNION DIE CATALOG NO.	WIRE STRIP LENGTH
BBLU-035D-2TC14E2	350 kcmil	1/4"	.75	1.28	1.36	.17	2.00	4.02	Red	TDM-500	18	T-18	2-1/8"
BBLU-035D-2TC38		3/8"	1.00	1.28	1.83	.17	2.00	4.49					
BBLU-035D		1/2"	1.75	1.28	3.00	.17	2.00	5.66					
BBLU-040D-2TC14E2	400 kcmil	1/4"	.75	1.39	1.36	.19	2.13	4.15	Blue	TDM-500	19	T-19	2-1/4"
BBLU-040D-2TC38		3/8"	1.00	1.39	1.83	.19	2.13	4.62					
BBLU-040D		1/2"	1.75	1.39	3.00	.19	2.13	5.79					
BBLU-050D-2TC14E2	500 kcmil	1/4"	.75	1.53	1.36	.21	2.25	4.39	Brown	TDM-500	20	T-20	2-3/8"
BBLU-050D-2TC38		3/8"	1.00	1.53	1.83	.21	2.25	4.86					
BBLU-050D		1/2"	1.75	1.53	3.00	.21	2.25	6.03					
BBLU-060D-2TC38	600 kcmil	3/8"	1.00	1.72	1.83	.27	2.69	5.39	Green	Hatched	22	T-22	2-13/16"
BBLU-060D		1/2"	1.75	1.72	3.00	.27	2.69	6.56					
BBLU-065D-2TC38	650 kcmil	3/8"	1.00	1.78	1.83	.27	2.81	5.51	Pink	Hatched	300	T-300	2-15/16"
BBLU-065D		1/2"	1.75	1.78	3.00	.27	2.81	6.68					
BBLU-075D-2TC38	750 kcmil	3/8"	1.00	1.91	2.08	.27	2.88	5.93	Black	Hatched	24	T-24	3"
BBLU-075D		1/2"	1.75	1.91	3.00	.27	2.88	6.85					
BBLU-080D	800 kcmil	1/2"	1.75	1.97	3.00	.25	2.94	7.00	Orange	Hatched	25	T-25P	3-1/16"
BBLU-100D-2TC38	1000 kcmil	3/8"	1.00	2.17	2.08	.33	3.00	6.24	White	Hatched	27	T-27P	3-1/8"
BBLU-100D		1/2"	1.25	2.17	2.38	.33	3.00	6.50					
BBLU-100D1		1/2"	1.75	2.17	3.00	.33	3.00	7.16					
BBLU-150D	1500 kcmil	1/2"	1.37	2.68	2.50	.39	3.19	6.90	Green	Hatched	31	T-31P	3-5/16"
BBLU-150D1		1/2"	1.75	2.69	3.00	.39	3.19	7.44					
BBLU-200D	2000 kcmil	1/2"	1.50	3.08	2.63	.46	3.44	7.38	Brown	Hatched	34	-	3-9/16"
BBLU-200D1		1/2"	1.75	3.08	3.00	.47	3.44	7.78					

• For 45° or 90° BENT TONGUES add suffix "-45" for 45 deg. or "-90" for 90 deg. to the catalog number

- Connectors from 8 AWG - 2000 kcmil are UL listed per UL486A-B and CSA certified per C22.2 No.65 for POWER applications
- Connectors from 8 AWG - 500 kcmil are UL listed for grounding, bonding and direct burial applications per UL467
- Connectors from 8 AWG - 250 kcmil are CSA certified for grounding, bonding and direct burial applications per C22.2 No.41