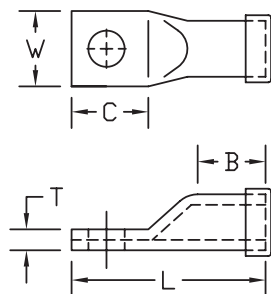


## Standard Barrel - One Hole Tongue

### Type BLUA-S

- Manufactured from seamless aluminum tubing
- Tin-plated and factory prefilled with oxide inhibitor compound
- Beveled entry for easy cable insertion
- Color coding conforms to industry standards ensuring proper die selection and providing for a faster installation
- Connectors are marked with catalog number, wire size, die index and crimp locations
- Connectors are suitable for voltages up to 35 KV
- End caps provided to prevent foreign materials from entering and contaminating the connector prior to usage
- **Connectors are UL listed and CSA certified with Penn-Union, Burndy, T&B, Huskie and Greenlee tooling**



#### BLUA-S

See table for dimensions and installation tooling information

## BLUA-S DIMENSIONS & INSTALLATION TOOLING INFORMATION

CATALOG NUMBER	ALUMINUM & COPPER CONDUCTOR SIZE	STUD HOLE SIZE	FIGURE DIMENSIONS (IN.)					COLOR CODE	INSTALLATION TOOLING				
			TONGUE WIDTH "W"	TONGUE LENGTH "C"	TONGUE THICKNESS "T"	BARREL LENGTH "B"	OVERALL LENGTH "L"		PENN-UNION DIELESS MECHANICAL TOOLS	BURNDY DIE INDEX NO.	PENN-UNION DIE CATALOG NO.	WIRE STRIP LENGTH	
BLUA-8S	8 AWG	1/4"	.40	.62	.12	.56	1.56	Blue	TDM-250 or TDM-500		374	T-374	3/4"
BLUA-6S	6 AWG	1/4"	.50	.80	.13	.69	1.83	Gray		346	T-346	7/8"	
BLUA-6S2		5/16"	.50	.78	.13	.75	1.82	Gray					
BLUA-4S3	4 AWG	1/4"	.58	.80	.18	.87	1.89	Green		375	T-375	1"	
BLUA-4S2		5/16"	.58	.80	.18	.87	1.89	Green					
BLUA-2S3	2 AWG	1/4"	.70	.85	.21	.78	2.04	Pink		348	T-348	1"	
BLUA-2S4		5/16"	.70	.86	.21	.78	2.05						
BLUA-2S		3/8"	.70	.86	.21	.78	2.05						
BLUA-1S1	1 AWG	1/4"	.73	.78	.17	.90	1.92	Gold		471	T-471	1-1/16"	
BLUA-1S3		5/16"	.73	.84	.17	.90	1.95						
BLUA-1S		3/8"	.73	1.18	.17	.90	2.53						
BLUA-1S2		1/2"	.82	1.25	.27	.90	2.59						
BLUA-1/0S2	1/0 AWG	1/4"	.84	.85	.23	.87	2.17	Tan		296	T-296	1-1/8"	
BLUA-1/0S3		5/16"	.84	.86	.23	.88	2.17						
BLUA-1/0S		3/8"	.84	.85	.23	.87	2.17						
BLUA-1/0S1		1/2"	.85	1.12	.23	1.12	2.43						
BLUA-2/0S4	2/0 AWG	1/4"	.93	.78	.25	1.09	2.25	Olive		297	T-297	1-1/4"	
BLUA-2/0S5		5/16"	.93	.84	.25	1.09	2.31						
BLUA-2/0S1		3/8"	.93	1.20	.25	1.09	2.62						
BLUA-2/0S		1/2"	.93	1.20	.25	1.09	2.62						
BLUA-3/0S5	3/0 AWG	5/16"	1.03	.84	.26	1.25	2.59	Ruby		467	T-467	1-3/8"	
BLUA-3/0S2		3/8"	1.03	1.06	.26	1.25	2.81						
BLUA-3/0S		1/2"	1.03	1.22	.26	1.25	2.91						
BLUA-4/0S3	4/0 AWG	5/16"	1.17	.84	.29	1.31	2.65	White		298	T-298	1-7/16"	
BLUA-4/0S5		3/8"	1.17	1.20	.30	1.28	2.97						
BLUA-4/0S		1/2"	1.17	1.20	.30	1.28	2.97						
BLUA-4/0S4		5/8"	1.17	1.46	.29	1.31	3.28						
BLUA-025S2	250 kcmil	3/8"	1.26	1.06	.33	1.41	3.00	Red	324	T-324	1-9/16"		
BLUA-025S		1/2"	1.25	1.53	.33	1.41	3.44						
BLUA-025S3		5/8"	1.26	1.50	.32	1.40	3.43						
BLUA-030S2	300 kcmil	3/8"	1.39	1.25	.35	1.50	3.62	Blue	470	T-470	1-5/8"		
BLUA-030S1		1/2"	1.37	1.56	.36	1.50	3.88						
BLUA-030S		5/8"	1.39	1.46	.35	1.50	3.65						
BLUA-035S1	350 kcmil	1/2"	1.48	1.55	.39	1.61	3.91	Brown	299	T-299	1-3/4"		
BLUA-035S		5/8"	1.48	1.55	.39	1.61	3.91						
BLUA-040S2	400 kcmil	1/2"	1.62	1.50	.42	1.81	4.53	Green	472	T-472	2"		
BLUA-040S3		5/8"	1.62	1.81	.42	1.81	4.84						
BLUA-050S2	500 kcmil	1/2"	1.79	1.50	.46	1.87	4.31	Pink	300	T-300	2-1/16"		
BLUA-050S3		5/8"	1.79	1.81	.46	1.87	4.62						
BLUA-060S1	600 kcmil	5/8"	1.96	2.03	.51	2.00	5.15	Black	473	T-473	2-1/8"		
BLUA-075S1	750 kcmil	5/8"	2.14	2.18	.57	2.25	5.37	Red	301	T-301P	2-3/8"		
BLUA-080S1	800 kcmil	5/8"	2.37	2.50	.62	2.31	6.40	Gray	474	T-474P	2-7/16"		
BLUA-100S1	1000 kcmil	5/8"	2.50	2.50	.65	2.56	6.71	Brown	302	T-302P	2-11/16"		

• Not UL listed

• Connectors from 8 AWG - 1000 kcmil are UL listed per UL486A-B and CSA certified per C22.2 No.65 for POWER applications