

KDS 3460 alcove shower

Model number:

142042

Dimensions: 60" x 34" x 80"

Installation: Alcove

Material: AcrylX™



Standard Features:

- Four-piece shower with AcrylX™ finish & PIN system for easy front installation
- Large top corner shelves, wide soap dish and standard acrylic handle (opt. metallic finishes)
- Right/left-hand seat (drain opposite to seat) or no seat (center drain)
- Optional unique features: Reinforced walls and grab bars
- Product also available in Above-the-Floor

Product characteristics:

- Multi-Piece Unit
- Easy Installation
- PIN system

Warranty:

Lifetime limited

Standard colors:



White (002)



Bone (004)



Biscuit (007)

Certifications

MAAX products adhere to one or more of the following certifications:



Recommended doors (Visit our website for a complete list of our recommended doors)

Description	No
134565	Kameleon Sliding Shower Door 55-59 x 71 in. 6 mm
134665	Kameleon SC Sliding Shower Door 55-59 x 71 in. 6 mm
105412	Polar Sliding Shower Door 54-59 ½ x 68 in.

Options (Visit our website for a complete list of our options)

No	Description
<input type="checkbox"/> OPT 10109	One 12-in. handle with metallic finish
<input type="checkbox"/> OPT 20200	Pre-assembled unit
<input type="checkbox"/> OPT 20203-B	18" Modern straight horizontal grab bar on back wall
<input type="checkbox"/> OPT 20203-VL	18" Modern straight vertical grab bar on left wall(factory installed)
<input type="checkbox"/> OPT 20203-VR	18" Modern straight vertical grab bar on right wall(factory installed)

KDS 3460 alcove shower

Model number:

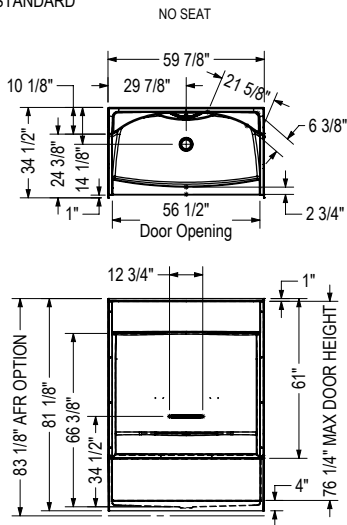
142042

Dimensions: 60" x 34" x 80"

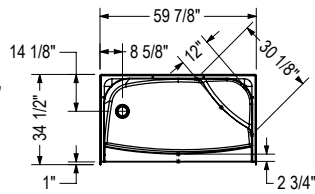
Installation: Alcove

Material: AcryIX™

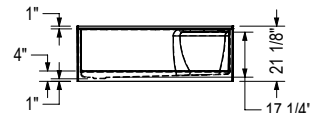
STANDARD



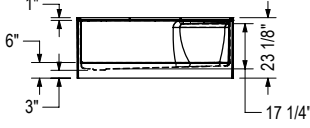
RIGHT SEAT SHOWN
LEFT SEAT SYMMETRICAL



NOT ABOVE-THE-FLOOR

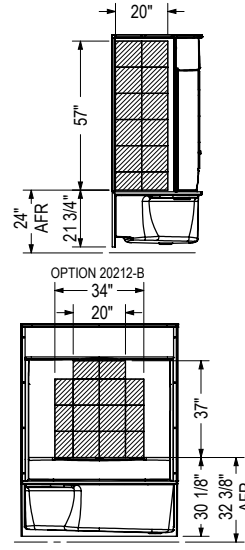


ABOVE-THE-FLOOR

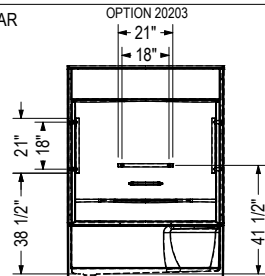


REINFORCEMENT BACKING

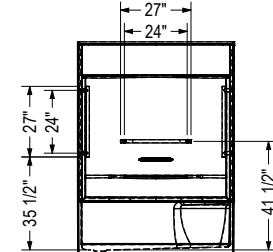
OPTION 20212-L Shown
OPTION 20212-R Symmetrical



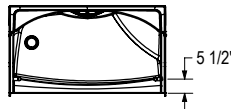
GRAB BAR



OPTION 20204



OPTION
20203-20204



All dimensions are approximate. Structure measurements must be verified against the unit to ensure proper fit.

Dimensions:

59 3/4 x 33 1/2 x 80 1/8 in.

Weight:

155 lbs -

Shape:

Rectangular

Pieces:

4

Drain location:

No seat, center drain

Left seat, right drain

Right seat, left drain

Project:

Contractor:

Representative:

Date:

Tel:

Notes: