

Steel 4x4 Box & Single-Gang Box for Concrete Block

For concrete block. Screw hole patterns for 4x4 and 2-gang devices. For added convenience, bracket ends break off for use on thicker block walls.

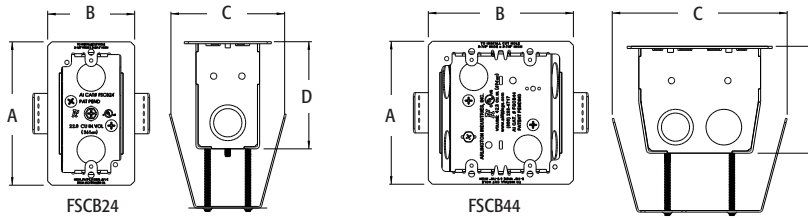
FEATURES AND BENEFITS

- 1/2" and 3/4" knockouts
- Screw hole patterns for devices: 4x4 and two-gang in the 4x4 box; and devices for the single-gang box
- Spring clip holds box securely against block when screws are tightened

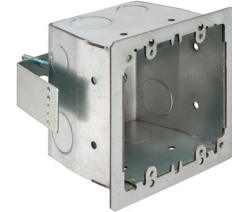
| CATALOG NUMBER | UPC/DCI/NAED MFG #018997 | DESCRIPTION/ ATTACHMENT | UNIT PKG | STD PKG | DIM A | DIM B | DIM C | DIM D |
|----------------|--------------------------|-------------------------|----------|---------|-------|-------|-------|-------|
| FSCB24 | 11237 | Steel, Single-gang | 25 | 25 | 4.437 | 2.688 | 3.519 | 3.315 |
| FSCB44 | 11236 | Steel, 4x4 | 20 | 20 | 4.437 | 4.500 | 5.428 | 3.315 |



PATENTED.



FSCB24



FSCB44

EASY INSTALLATION



1 Opening in block.



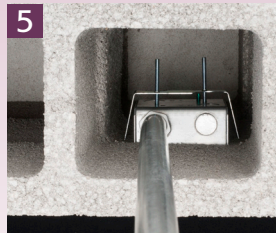
2 Insert the box in the opening in the block. (Top view shown.)



3 Tighten the screws on the spring clip to pull it securely against the block.



4 Install the EMT in the top of the box.

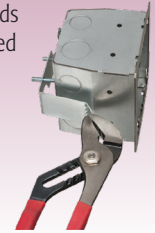


5 Top view: EMT installed in box.



6 Continue adding block.

Scored bracket ends break off as needed for use on thicker block.



Scan For Video

