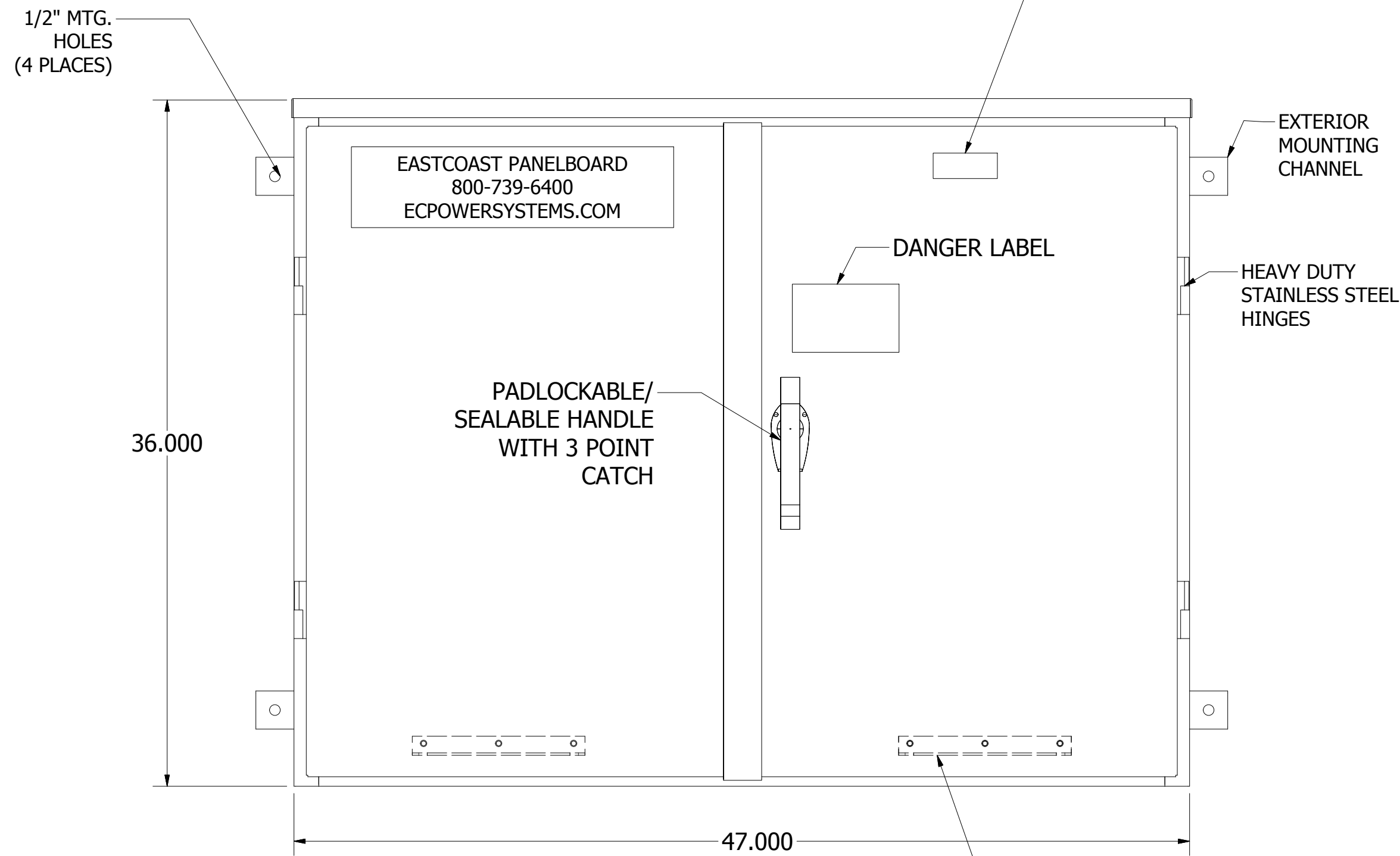
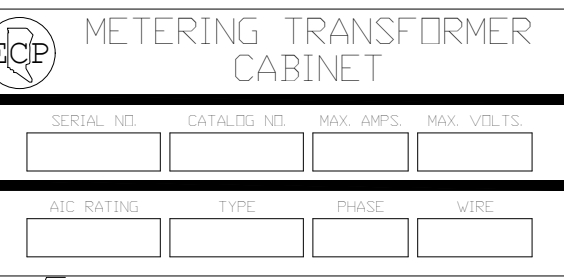


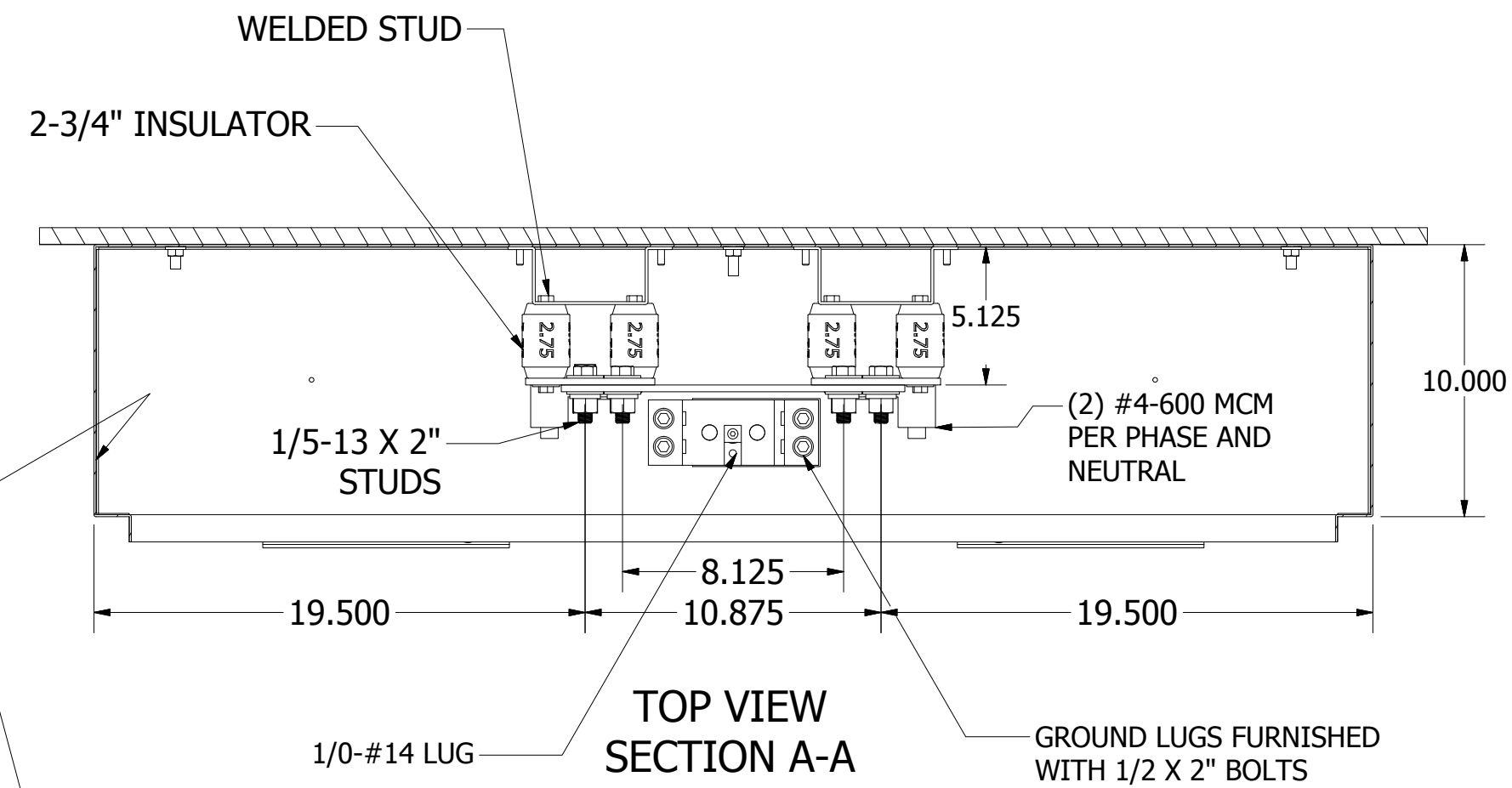
TOP VIEW



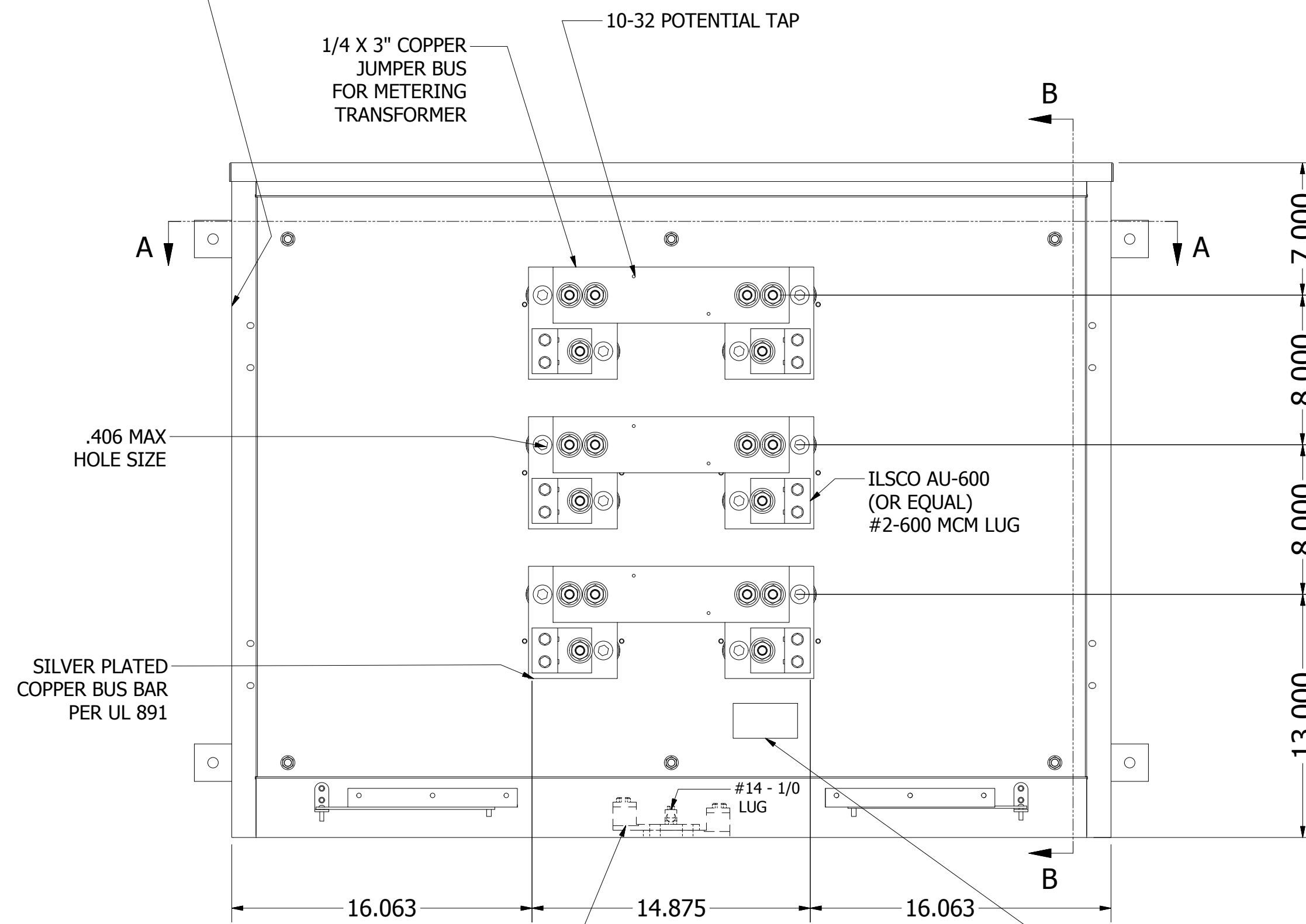
FRONT VIEW



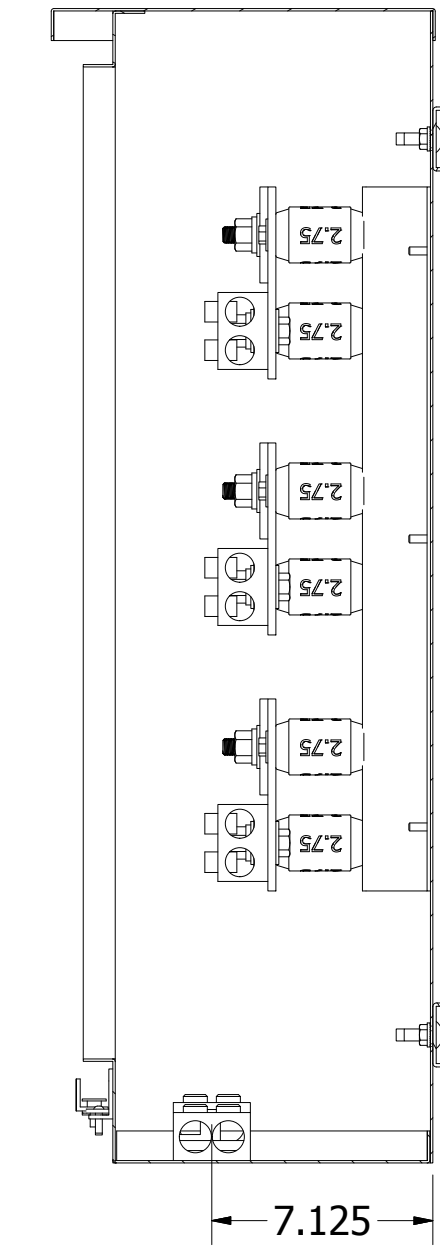
- LABELS
- BOX
 - TYPE 3R ENCLOSURE
 - UL
 - UNION



TOP VIEW SECTION A-A



FRONT VIEW NO DOORS



RIGHT VIEW SECTION B-B

- GENERAL NOTES
1. TYPE NEMA 3R ENCLOSURE, 14 GA GALV. STEEL, POWDER COAT, ASA 61 GRAY, DURACOAT P-2395-6 #MH18034.
 2. DESIGNED FOR WALL MOUNTED FRONT ACCESS.
 3. CABINET IS FURNISHED WITH (6) 1/4" X 4" X 6" COPPER STRAPS WITH 1/2" THREADED HOLES WITH 1/2-13 X 2" BOLTS, BELLEVILLE NUTS AND (3) 1/4" X 3" X 10" JUMPER BUS.
 4. MANUFACTURED PER UL 414 FILE #E321770 AND UL 891 STANDARDS.
 5. 50,000 AIC MAXIMUM (SEE MAIN PROTECTIVE DEVICE)
 6. 800A, 600VAC MAX., 3 4W (3 3W (NO NEUTRAL))
 7. ALL HARDWARE IS GRADE 5 WITH BELLEVILLE WASHERS AND NUTS.
 8. 1/2-13 TORQUE 55 FT LB'S

WRAP LINE CABLES TOGETHER AND LOAD CABLES TOGETHER WITH NYLON ROPE NOMINALLY 3/16 INCH (9.5 mm) IN DIAMETER OR ROPE HAVING A MINIMUM TENSILE STRENGTH OF 2000 POUNDS (896 N). MINIMUM WRAPPING IS TO BE:
 A) AT 6 INCHES (152.4 mm) AND AT 12 INCHES (304.8 mm) FROM THE TERMINALS WITH FIVE WRAPS AND
 B) EVERY ADDITIONAL 6 INCHES WITH FIVE WRAPS OR EVERY 1 INCH (25.4 mm) WITH ONE WRAP

APPROVED AS SUBMITTED.

APPROVED AS MARKED.

NOT APPROVED - RESUBMIT.

APPROVED BY _____ DATE _____

THIS ORDER CAN NOT BE RELEASED FOR MANUFACTURING UNTIL A SIGNED APPROVED DRAWING IS RECEIVED AT THE FACTORY.

THIS DRAWING IS OUR INTERPRETATION OF CUSTOMER'S REQUIREMENTS. VERIFY CONFIGURATIONS AND ALL DIMENSIONS. ADVISE ALL MISSING DIMENSIONS.

REV.	REV. BY	DATE	DESCRIPTION
1	DAO	8/24/18	REMOVED WIRE TYPE STICKER

PROJECT: PROJECT:		PROPRIETARY This document is the property of East Coast Panelboard, Inc. and contains proprietary and confidential information which must not be duplicated, used or disclosed other than as expressly authorized by East Coast Panelboard, Inc.	
DISTRIBUTOR: DISTRIBUTOR:		TOLERANCES UNLESS OTHERWISE SPECIFIED	
DESCRIPTION: CTJ-800R-A-G		INCH xx DEC ± .06 xxx DEC ± .031	METRIC xx MM ± xxx MM ±
OUTDOOR METERING TRANSFORMER CABINET			
200A TO 800A			
JOB NO:	JOB NO:	DWG. REF.	DWG. SCALE
BY: DAO	DATE: 2/2/2018	A	1:6
CHECKED:		DWG. NO.	REV. 1
APPROVED:		S-0004-000048-00	SHEET # 1

A DIVISION OF EASTCOAST POWER SYSTEMS
101 TORNILLO WAY, TINTON FALLS, NJ 07712