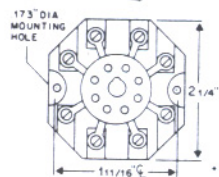
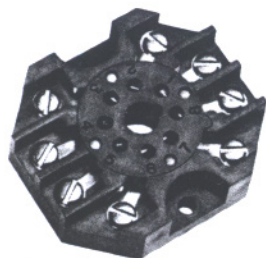




Accessories

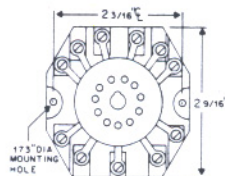
SOCKETS



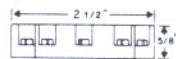
8 PIN
OCTAL



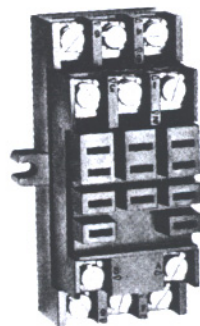
RB-08



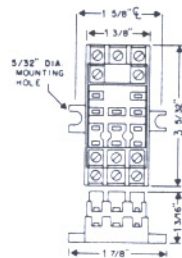
11 PIN
OCTAL



RB-11



11 PIN
BLADE



QC-11

WIRE Up to one (1) No. 12 AWG. Lugs recommended on wire larger than No. 16 AWG.

RATINGS: 10 Amps @ 600 Volts

TERMINALS: #6-32 Screws, 5/16" Long, Steel, Nickel Plated

MATERIAL:
housing: G.E. Noryl
Inserts: Brass
Screws: Steel, Nickel Plated

AGENCY APPROVAL

UL Recognized: File #E-60008
CSA Certified: File #LR29513

