



a Geberit company

2100 South Clearwater Drive
Des Plaines, IL 60018
Phone: 847-803-5000
Fax: 847-803-5454
www.chicagofaucets.com

REPAIR PARTS

FITTING NO.

445-ABCP

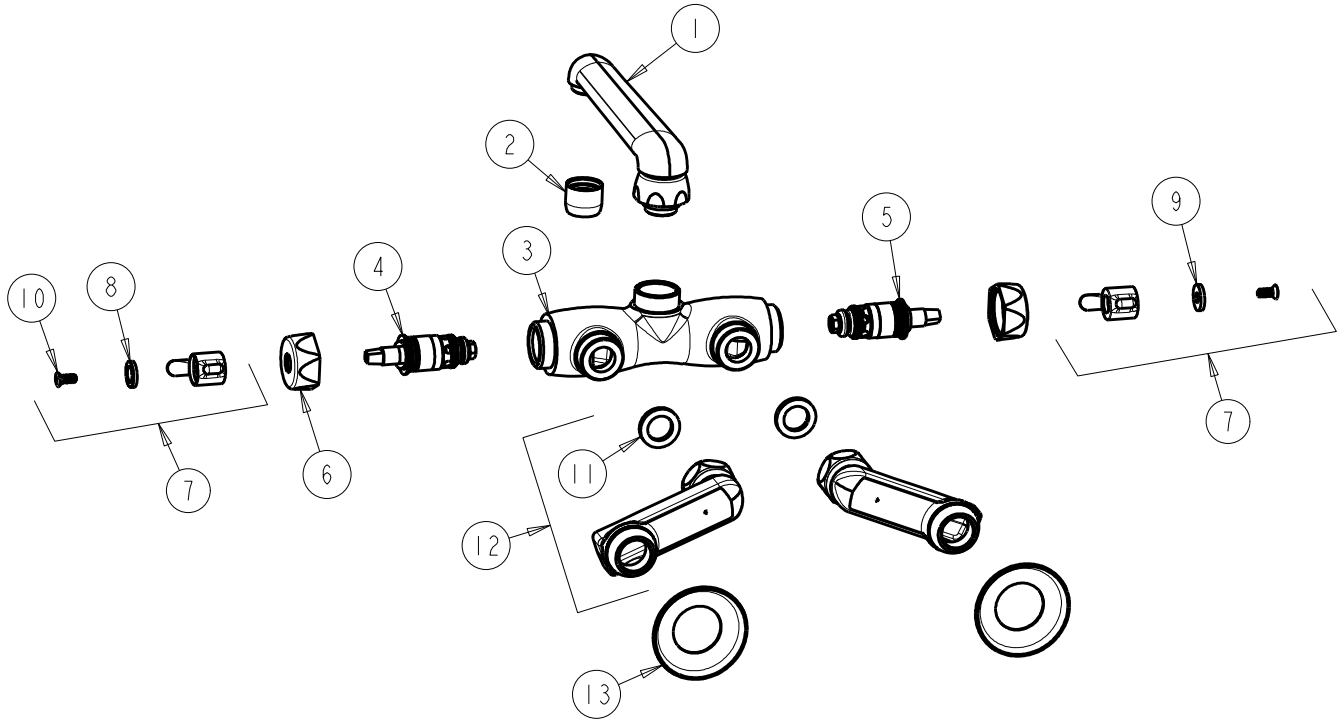
SUBMITTED MODEL NO.

ITEM NO.

BY: JAR DATE: 10-30-08

CHK: *[Signature]* REV: 05-08-14

FOR TECHNICAL ASSISTANCE
1-800-TEC-TRUE (1-800-832-8783)



ITEM	PART NO.	DESCRIPTION
1	S6LEOJKAB	SPOUT, CAST 6" C-C
2	E3JKABCP	OUTLET, AERATOR 2.2 GPM
3	-----	VALVE BODY (NOT SOLD SEPARATELY)
4	1-099XTJKABNF	QUATURN CARTRIDGE (RH)
5	1-100XTJKABNF	QUATURN CARTRIDGE (LH)
6	444-005JKCP	CAP
7	369-PRJKCP	HANDLE, 2-3/8" LEVER (PAIR)
8	633-123JKNF	INDEX BUTTON (BLUE)
9	633-023JKNF	INDEX BUTTON (RED)
10	420-010JKRCF	SCREW, 10-32 UNC PH 1/2
11	1-011JKABNF	WASHER, .97 X .62 X .12
12	HJKABCP	ARM ASSEMBLY w/WASHER
13	1-055JKCP	FLANGE