

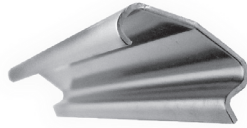
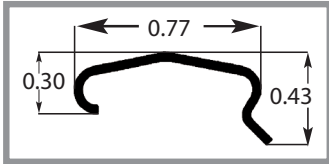
SUBMITTAL RECORD _____
 JOB _____
 LOCATION _____
 SUBMITTED TO _____
 SUBMITTAL PREPARED BY _____
 APPROVED BY _____
 DATE _____



Submittal Form Cleats

DYN-O-MATE Cleat

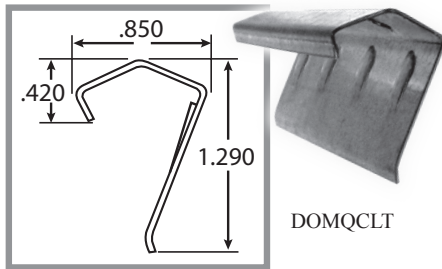
- DOM-CLT and DOM-PCLT for use with DOMJ & DOMH 20 gauge flanges for airtight duct connections.
- DOM-CLT is manufactured from 20 gauge galvanized steel 6" pieces.
- DOM-PCLT is extruded .070" PVC and designed for break away connection needs.



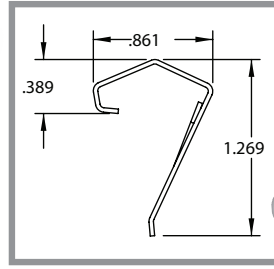
Item #	Code	Description
21250	DOMCLT	6in. Metal Cleat
21256	DOMCLTSS	6in. Stainless Steel Cleat
21252	DOMPCLT	6in. Plastic Cleat

Quad Cleat

- DOM-QCLT & HDQC-PLUS are compatible with Dyn-O-Mate® J, Ductmate™ 35, CL Ward™ J, Ward Industries™ J, Hardcast™ flanges, TDC, TDF and TDX Connections, and is manufactured from 22 gauge steel.
- HDQC-PLUS is also available in stainless steel.
- HDQC-PLUS is recommended for high pressure, heavy duty transverse duct.

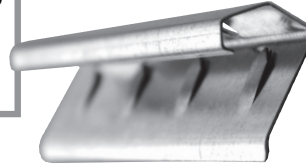


DOMQCLT



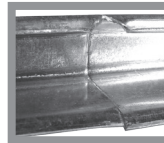
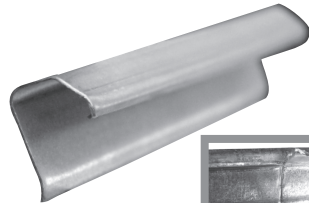
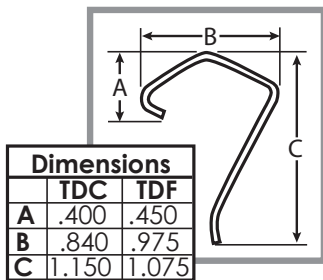
HDQC-PLUS

Item #	Code	Description
21259	DOMQCLT	Metal Quad Cleat
21269	HDQC-PLUS	Heavy Duty Quad Cleat Plus
21228	HDQC-PLUS-SS	Heavy Duty Quad Cleat Plus - Stainless



TDC/TDF Cleat

- For use with TDC/TDF connection.
- TDC-2230/TDF-2230 is 22 gauge steel formed into lengths of 30" long and divided into five 6" cleats that are partially cut through allowing them to be easily separated into 6" pieces.
- TDF-PCLT is extruded .070" PVC and designed for break away connection needs.



Breakaway

Item #	Code	Description
30" Pieces		
13230	TDC2230	6in. TDC (Pre-Scored Cleat)
13231	TDF2230	TDF 6in. Metal (Pre-Scored Cleat)
6" Pieces		
21253	TDFPCLT	TDF 6in. Plastic

Installation Recommendations

- 1/2" to 2" sp - 1 piece on 24" centers
- 2" to 3" sp - 1 piece on 18" centers
- 4" to 6" sp - 1 piece on 12" centers
- Over 10" sp - continuous cleat

Duro Dyne East Division, Bay Shore, NY
 Duro Dyne Midwest Division, Fairfield, OH
 Duro Dyne West Division, Fontana, CA
 Duro Dyne Canada, Lachine, Quebec, Canada

631-249-9000 Fax: 631-249-8346
 513-870-6000 Fax: 513-870-6005
 562-926-1774 Fax: 562-926-5778
 514-422-9760 Fax: 514-636-0328

www.durodyne.com E-mail: durodyne@durodyne.com



©2015 Duro Dyne Corporation
 Printed in USA 8/15
 BO050006