

Fast Trak® - Low Profile



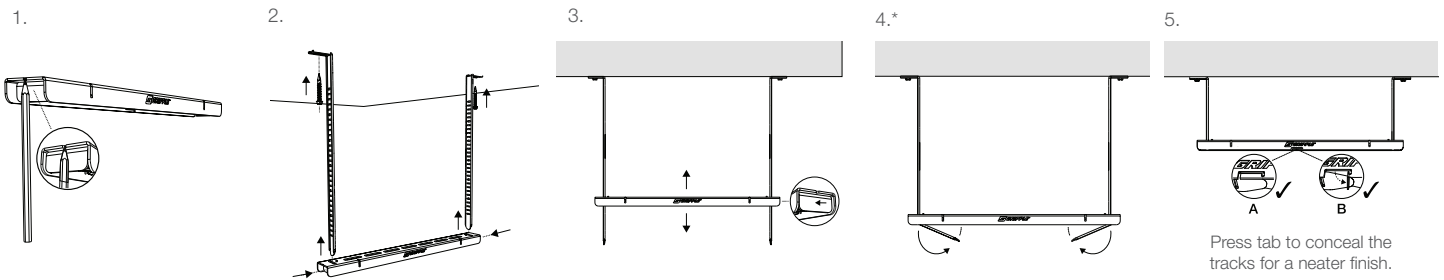
A space efficient low profile pre-fabricated trapeze bracket. Ideal for use with electrical containment, piping and mechanical services in ultra-restricted ceiling spaces.

FEATURES / BENEFITS

- **Space saver** – 0.83" bracket depth is even lower profile than standard Fast Trak range
- **Quick** – up to six times faster to install than traditional suspension systems
- **Safe** – pre-fabricated system which removes the need to cut threaded rod or channel on site
- **Tool free adjustment** – brackets can be moved up and down the tracks to accommodate changes in position during installation
- **Easy measurement** – indicators at each end of the bracket offer reference points when marking fixing points on the ceiling; level markers on tracks every 5 slots (2 1/4" increments) for easy leveling without tools
- **Neat & tidy** – system can be 'stacked' on-site to reduce storage requirements
- **Zero waste** – tracks bend neatly under bracket



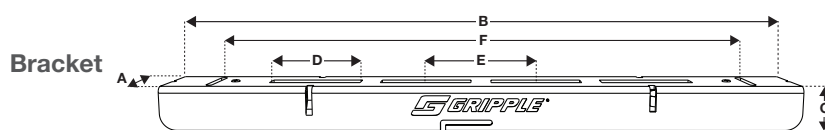
INSTALLATION & ADJUSTMENT



Internal applications only. Do not adjust under load. No dynamic loading. Single use only.

*Excess tracks can also be bent back and forth to snap off once bracket is leveled & secured for a neater finish. Bending tracks by hand is not recommended when excess is under 4".

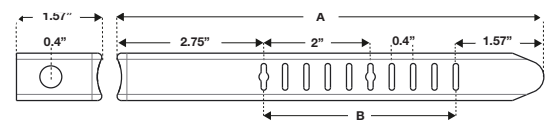
SPECIFICATION



Bracket	A (in)	B (in)	C (in)	D (in)	E (in)	F (in)
FTBL-9IN*	1.6	9.4	0.8	1.6	2.0	7.48
FTBL-13IN*	1.6	13.4	0.8	1.6	2.0	11.42
FTBL-17IN*	1.6	17.3	0.8	1.6	2.0	15.35
FTBL-21IN*	1.6	21.2	0.8	1.6	2.0	19.29
FTBL-25IN*	1.6	25.2	0.8	1.6	2.0	23.23
FTBL-29IN*	1.6	29.1	0.8	1.6	2.0	27.17
FTBL-33IN*	1.6	33.0	0.8	1.6	2.0	31.10
FTBL-37IN*	1.6	37.0	0.8	1.6	2.0	35.04
FTBL-41IN*	1.6	41.0	0.8	1.6	2.0	38.98
FTBL-45IN*	1.6	44.9	0.8	1.6	2.0	42.91
FTBL-49IN*	1.6	48.8	0.8	1.6	2.0	46.85
FTBL-53IN*	1.6	52.7	0.8	1.6	2.0	50.79
FTBL-58IN*	1.6	56.7	0.8	1.6	2.0	54.72
FTBL-61IN*	1.6	60.6	0.8	1.6	2.0	58.66

* NOTE: please check for lead times on these 'non-stocked' bracket sizes: FTB-9IN, FTB-13IN, FTB-25IN, FTB-37IN, FTB-49IN, and FTB-58IN

Track



Track	A (in)	B (in)
FTT-8IN*	7.9	3.5
FTT-12IN*	11.8	7.5
FTT-16IN*	15.7	11.4
FTT-20IN*	19.7	15.4
FTT-24IN*	23.6	19.3
FTT-28IN*	27.6	23.2
FTT-31IN*	31.5	27.2
FTT-35IN*	35.4	31.1
FTT-39IN*	39.4	35.0
FTT-43IN*	43.3	39.0
FTT-47IN*	47.2	42.9
FTT-51IN*	51.2	46.9
FTT-55IN*	55.1	50.8
FTT-59IN*	59.1	54.7

* NOTE: please check for lead times on these 'non-stocked' track sizes: FTT-8IN, FTT-16IN, FTT-28IN, FTT-39IN, FTT-43IN, FTT-51IN, and FTT-55IN

SUBMITTAL INFORMATION

Safe Working Load:

Loading at ambient temperatures. See table on reverse page for maximum working load.

Material:

Track & Bracket – BS EN 10346:2009 DX51D

(Mild Steel, Pre-Galv Z275)

Spring – Stainless Steel 302

Latch – BS EN 10346:2009 DX51D

(Mild Steel)

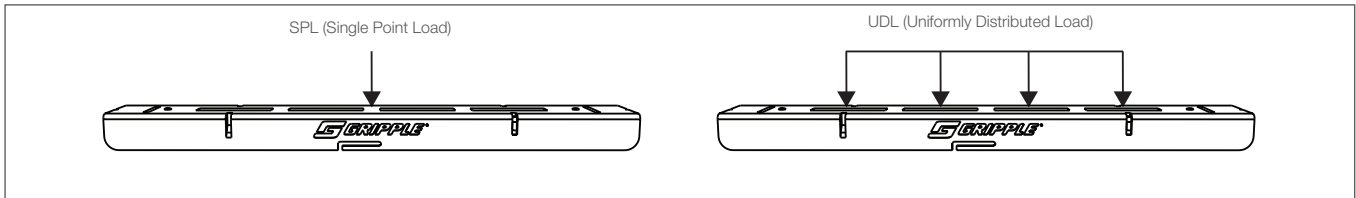
Approvals:

UL 2239 listed

Fire tested by Exova to F120 & MPA to 1363-1



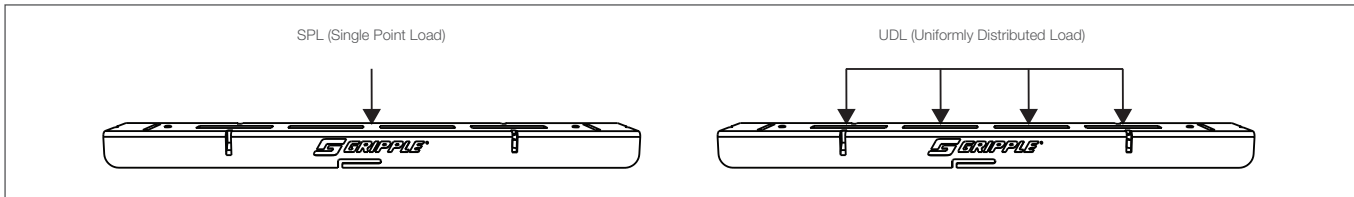
Maximum Working Load @ 3:1 (lbs)



Bracket	FTBL 9IN	FTBL 13IN	FTBL 17IN	FTBL 21IN	FTBL 25IN	FTBL 29IN	FTBL 33IN	FTBL 37IN	FTBL 41IN	FTBL 45IN	FTBL 49IN	FTBL 53IN	FTBL 58IN	FTBL 61IN
UDL (Uniformly Distributed Load)	515	360	285	240	220	200	155	155	130	120	110	95	90	80
SPL (Single Point Load)	390	255	170	165	130	120	95	90	75	75	55	50	50	50

All results are based on loading at ambient temperatures

Deflection Data (lbs)



Bracket	FTB 170	FTB 270	FTB 370	FTB 470	FTB 570	FTB 670	FTB 770	FTB 870	FTB 970	FTB 1070	FTB 1170	FTB 1270	FTB 1370	FTB 1470
UDL - L/200	331.41	304.75	252.03	232.32	171.53	166.74	153.34	135.10	105.62	85.53	98.14	70.14	65.62	64.85
SPL - L/200	581.90	325.28	248.88	188.46	146.48	121.61	93.36	79.42	74.68	56.51	47.74	40.99	39.67	36.67
UDL - L/240	263.87	247.36	210.80	184.03	140.88	136.60	138.80	113.14	86.37	72.54	79.69	58.81	55.85	57.15
SPL - L/240	496.01	279.15	201.74	156.82	121.83	101.65	77.79	67.27	64.03	48.27	40.75	35.02	34.33	31.80
UDL - Ultimate Load	1554.30	1089.14	859.99	732.94	663.88	602.32	470.77	470.90	390.73	368.01	338.60	293.95	280.52	249.47
SPL - Ultimate Load	1171.27	773.98	520.42	495.99	400.60	362.63	291.41	272.82	228.37	226.98	172.70	164.05	151.33	152.10

All results are based on loading at ambient temperatures