

GRAINGER®

FOR THE ONES WHO GET IT DONE

myers[™]
INDUSTRIES

AKRO-MILS[®]

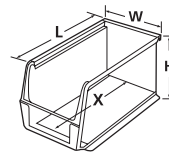


QUICK REFERENCE CATALOG

INDUSTRY-LEADING HANGING & STACKING BINS

AkroBins Model No.	Outside Dimensions (In.)			Bottom Dimensions (In.)				Capacity/Quantity				
	L	W	H	L	W	H	X	Bin Load Capacity On Rack	Bin Ctn. Qty.	Divider Pkg. Qty.	Lid Pkg. Qty.	Card Stock
30210	5-3/8	4-1/8	3	4-3/4	3-7/16	2-13/16	4	10 lbs.	24	6	24	29301
30220	7-3/8	4-1/8	3	6-3/4	3-7/16	2-13/16	6	10 lbs.	24	6	24	29301
30237	9-1/4	6	5	8-9/16	4-7/8	4-3/4	7-1/4	20 lbs.	12	6	-	29302
30224	10-7/8	4-1/8	4	10-1/4	3-3/16	3-3/4	9	20 lbs.	12	6	12	29301
30230	10-7/8	5-1/2	5	10-1/4	4-3/8	4-3/4	9	30 lbs.	12	6	12	29302
30234	14-3/4	5-1/2	5	14-1/16	4-3/8	4-3/4	12-13/16	50 lbs.	12	6	-	29302
30239	10-3/4	8-1/4	7	10	6-9/16	6-3/4	8	50 lbs.	6	6	-	29302
30240	14-3/4	8-1/4	7	14	6-9/16	6-3/4	12	60 lbs.	12	6	-	29302
30265	18	8-1/4	9	17-1/8	6-3/4	8-1/4	14-1/2	60 lbs.	6	6	-	-
30235	10-7/8	11	5	10-1/4	10	4-3/4	9	50 lbs.	6	6	6	29302
30260	18	11	10	17	9-1/2	9-3/4	14-3/16	60 lbs.	6	6	-	-
30255	10-7/8	16-1/2	5	9-3/4	15	4-3/4	9	60 lbs.	6	6	-	29302
30250	14-3/4	16-1/2	7	14	14-3/4	6-3/4	12	75 lbs.	6	6	-	29302
30270	18	16-1/2	11	17-1/8	14-3/4	10-1/4	14	75 lbs.	3	6	-	-
30320	8-5/8	33	5	7	31-1/2	4-3/16	6	80 lbs.	4	7/6	4	-

One color per carton. Order in carton quantities. CAUTION: When using bins with hanging systems, do not exceed the weight capacity for the rack, which may be less than the total sum of bin capacities. 40321= Tall Divider; 40220=Short Divider. †() = Max. # of divider slots per bin.



Card Stock Holders	
29300	21D064
29301	21D065
29302	21D066



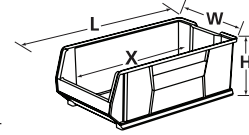
AkroBins	RED	YELLOW	BLUE	STONE	GREEN	PURPLE	LIGHT BLUE	CLEAR	BLACK	LID	LENGTH DIVIDER	WIDTH DIVIDER
30210	2W072	5W869	2W776	1UGL9	2RV65	5TFP8	5TFP9	4KER2	3HRX7	46U433	5KY84	-
30220	2W073	5W870	2W777	1UGN1	2RV66	5TFR2	5TFR3	4KER3	3HRX8	46U434	5KY85	-
30224	2RV94	2RV98	2RV96	1UGN2	2RY10	5TFR6	5TFR7	4KER4	3HRX9	46U437	20XK04	-
30230	2W074	5W871	2W778	1UGN3	2RV67	5TFT0	5TFT1	4KER5	3HRY1	46U435	5KY86	20XK07
30234	4TJ77	4TJ78	4TJ76	1UGN4	2RV68	10F089	10F090	4KER8	3HRY2	-	20XK05	-
30239	5W866	5W873	5W868	1UGN6	2RV70	10F093	10F094	4KER7	3HRY4	-	5KY87	-
30240	2W075	5W874	2W779	1UGN7	2RV71	5TFT8	5TFT9	4KER9	3HRY5	-	5KY88	-
30265	5YM92	5YM93	5YM91	1UGP1	2RV73	-	-	4KET4	3HRZ2	-	5KY89	-
30235	5W865	5W872	5W867	1UGN5	2RV69	5TFT4	5TFT5	4KER6	3HRY3	46U436	5KY86	-
30260	1UGP8	1UGP9	1UGR1	1UGR2	1UGR3	-	-	4KET3	3HRZ7	-	20XK06	-
30255	2RV86	2RV88	2RV90	1UGN9	2RV92	-	-	4KET2	3HRY9	-	5KY86	-
30250	2W076	5W875	2W780	1UGN8	2RV72	5TFV2	5TFV3	4KET1	3HRY7	-	5KY88	20XK08
30270	5YM95	5YM96	5YM94	1UGP2	2RV74	-	-	4KET5	3HRZ4	-	5KY90	20XK09
30320	1UGP3	1UGP7	1UGP4	1UGP5	1UGP6	-	-	4KET6	3HRZ6	1UGR8	9CUG4 5KY85	-

9CUGR = TALL DIVIDER; 5KY85 = SHORT DIVIDER

INDUSTRY-LEADING LARGE-CAPACITY STACKING BINS

Super-Size AkroBins Model No.	Outside Dimensions (In.)			Inside Dimensions (In.)				Capacity/Quantity			
	L	W	H	L	W	H	X	Max. Cap. per Bin	Stacking Cap./= Qty. Stacked	Ctn. Qty.	Divider Pkg. Qty. W L
30280	20	12-3/8	6	16-7/8	10-11/16	5-3/8	15-1/2	200 lbs.	40 lb./10	4	- 2
30281	20	12-3/8	8	16-7/8	10-11/16	7-3/8	15-1/2	200 lbs.	50 lb./7	3	- 3
30282	20	12-3/8	12	16-7/8	10-11/16	11-3/8	15-1/2	200 lbs.	60 lb./5	2	- 1
30283	20	18-3/8	12	16-7/8	16-9/16	11-3/8	15-1/2	300 lbs.	150 lb./5	1	- 1
30284	23-7/8	8-1/4	7	20-7/8	6-3/8	6-1/8	19-3/8	200 lbs.	150 lb./5	4	2 4
30286	23-7/8	11	7	20-7/8	9-1/8	6-1/8	19-5/16	200 lbs.	150 lb./5	4	2 4
30287	23-7/8	11	10	20-3/4	9	9-1/8	19-5/16	300 lbs.	150 lb./5	4	6 6
30288	23-7/8	16-1/2	11	20-3/4	14-3/8	10-1/8	19-5/16	300 lbs.	150 lb./5	1	6 6
30289	23-7/8	18-1/4	12	20-3/4	16	11-1/8	19-1/4	300 lbs.	150 lb./5	1	2 1
30290	29-1/4	18-3/8	12	26-1/8	16-9/16	11-3/8	24-3/4	300 lbs.	150 lb./5	1	- 1
30292	29-7/8	11	10	26-3/4	9	9-1/8	25-5/16	300 lbs.	150 lb./5	4	6 6
30293	29-7/8	16-1/2	11	26-3/4	14-3/8	10-1/8	25-5/16	300 lbs.	150 lb./5	1	6 6

One color per carton. Not recommended to hang on rack or panel systems. Order in carton quantities. * () = Max. # of divider slots per bin. †Assembly required.



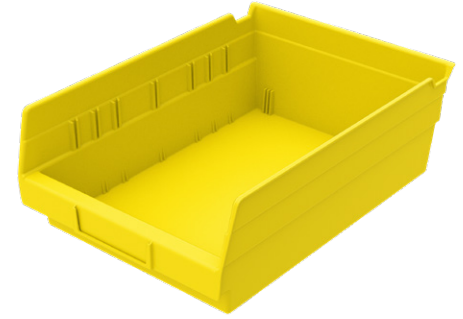
Super-Size AkroBins	RED	YELLOW	BLUE	GRAY	CLEAR	LENGTH DIVIDER	WIDTH DIVIDER
30280	3AJ40	3AJ42	3AJ41	45MV69	40K416	10A045	-
30281	3AJ43	3AJ49	1HL97	45MV70	40K417	10A046	-
30282	3AJ50	3AJ52	3AJ51	45MV71	40K418	10A047	-
30283	3AJ53	3AJ57	3AJ56	45MV72	40K419	10A047	-
30284	10A040	10A041	10A042	45MV73	40K420	4MXK9	10A043
30286	4MXK3	4MXK5	4MXK4	45MV74	40K421	4MXK9	4MXL1
30287	3FVZ7	3FVZ9	3FVZ8	45MV75	40K422	3FWC1	3HRW7
30288	3FWA1	3FWA3	3FWA2	45MV76	40K423	3FWC1	3HRW8
30289	4MXK6	4MXK8	4MXK7	45MV77	40K424	4MXL3	4MXL4
30290	3AJ61	3AA10	3AJ63	45MV78	40K425	10A048	-
30292	3FWA4	3FWA6	3FWA5	45MV79	40K426	3HRW6	3HRW7
30293	3FWA7	3FWA9	3FWA8	45MV80	40K427	3HRW6	3HRW8

Shelf Bins

INDUSTRY-LEADING 4" HIGH SHELF BINS ARE DURABLE, EFFICIENT

Shelf Bins Model No.	Outside Dimensions (In.)			Inside Dimensions (In.)			Capacity/Quantity			Cups per Bin		Divider Pkg. Qty.	Labels	Card Stock
	L	W	H	L	W	H	Cubic Inches	Ctn. Qty.	Small 30101	Large 30102				
30110	11-5/8	2-3/4	4	10-1/4	1-5/8	4	54	24	3	—	—	29200	29300**	
30120	11-5/8	4-1/8	4	10-1/4	3	4	78	24	5	2	24	29201	29300	
30130	11-5/8	6-5/8	4	10-1/4	5-1/2	4	128	12	9	4	24	29201	29300	
30150	11-5/8	8-3/8	4	10-1/4	7-1/8	4	138	12	11	4	24	29201	29300	
30170	11-5/8	11-1/8	4	10-1/4	10	4	197	12	15	6	24	29201	29300	
30128	17-7/8	4-1/8	4	16-1/2	3	4	123	12	8	3	24	29201	29300	
30138	17-7/8	6-5/8	4	16-1/2	5-1/2	4	176	12	13	6	24	29201	29300	
30158	17-7/8	8-3/8	4	16-1/2	7-1/8	4	214	12	15	6	24	29201	29300	
30178	17-7/8	11-1/8	4	16-1/2	10	4	292	12	25	12	24	29201	29300	
30124	23-5/8	4-1/8	4	22-1/8	3	4	199	12	11	4	24	29201	29300	
30164	23-5/8	6-5/8	4	22-1/8	5-1/2	4	321	6	21	8	24	29201	29300	
30184	23-5/8	8-3/8	4	22-1/8	7-1/8	4	346	6	25	8	24	29201	29300	
30174	23-5/8	11-1/8	4	22-1/8	10	4	513	6	35	16	24	29201	29300	

One color per carton. Order in carton quantities. * () = Max. # of divider slots per bin. **29300 must be cut to length to fit 30110.



Bin Cups Model No.	Outside Dimensions (In.)			Ctn. Qty.
	L	W	H	
30101	2	3-1/4	3	48
30102	2-3/4	5	3	24

Shelf Bins	RED	YELLOW	BLUE	GREEN	WHITE	CLEAR	WIDTH DIVIDER
30110	2W328	5W852	5W839	1UMR7	1UMU2	40K437	—
30120	2W251	5W853	5W840	1UMR8	1UMU3	40K438	3A563
30124	5W836	5W861	5W848	1UMT7	—	40K439	3A563
30128	2W719	5W857	5W844	1UMT3	—	40K440	3A563
30130	2W329	5W854	5W841	1UMR9	1UMU4	40K441	3A564
30138	2W720	5W858	5W845	1UMT4	—	40K442	3A564
30150	5W219	5W855	5W842	1UMT1	—	40K443	3A565
30158	5W220	5W859	5W846	1UMT5	—	40K444	3A565
30164	5W221	5W862	5W849	1UMT8	—	40K445	3A564
30170	5W834	5W856	5W843	1UMT2	—	40K446	6A278
30174	5W838	5W864	5W851	1UMU1	—	40K447	6A278
30178	5W835	5W860	5W847	1UMT6	—	40K448	6A278
30184	5W837	5W863	5W850	1UMT9	—	40K449	3A565



Card Stock Holders	
29300	21D064
29301	21D065
29302	21D066



Bin Cups	
30101	4TJ75
30102	1UGR9

Stak-N-Store Bins

STACKABLE BINS PERFECT FOR HEAVY, BULKY ITEMS



Stak-N-Store Bins Model No.	Outside Dimensions (In.)			Capacity/Quantity				
	L	W	H	Cu. Ft.	Gal	Lbs.	Stacking Height	Ctn. Qty.
13014	17-1/2	10-7/8	12-1/2	.98	7.4	75	3	4
13017	15-1/4	19-7/8	12-7/16	1.7	12.7	75	3	3
13018	17-1/2	16-1/2	12-1/2	1.6	12	75	3	2

One color per carton. Order in carton quantities.

Stak-N-Store Bins	RED	GRAY	BLUE	CLEAR
13014	4HY37	4HY41	4HY39	10A163
13017	4HY36	4TJ74	4HY35	10A164
13018	4HY43	4HY47	4HY45	10A165

6" HIGH SHELF BINS MAXIMIZE STORAGE CAPACITY

ShelfMax Model No.	Outside Dimensions (In.)			Inside Dimensions (In.)			Capacity/Quantity		Accessories		
	L	W	H	L	W	H	Cubic Inches	Ctn. Qty.	Black Width Dividers*	Divider Pkg. Qty.	Card Stock
30040	11-5/8	4-1/8	6	9-3/4	2-1/2	5-15/16	175	16	40020 (7)	12	29301
30090	11-5/8	6-5/8	6	9-3/4	5	5-15/16	310	10	40030 (7)	12	29301
30080	11-5/8	8-3/8	6	9-3/4	6-5/8	5-15/16	398	8	40040 (7)	12	29301
30048	17-7/8	4-1/8	6	16	2-1/2	5-15/16	280	8	40020 (7)	12	29301
30098	17-7/8	6-5/8	6	16	5	5-15/16	505	10	40030 (7)	12	29301
30088	17-7/8	8-3/8	6	16	6-5/8	5-15/16	648	8	40040 (7)	12	29301
30094	23-5/8	6-5/8	6	21-3/4	5	5-15/16	686	10	40030 (7)	12	29301
30084	23-5/8	8-3/8	6	21-3/4	6-5/8	5-15/16	935	6	40040 (7)	12	29301
30014	23-5/8	11-1/8	6	21-3/4	9-1/2	5-15/16	1303	6	-	12	29301

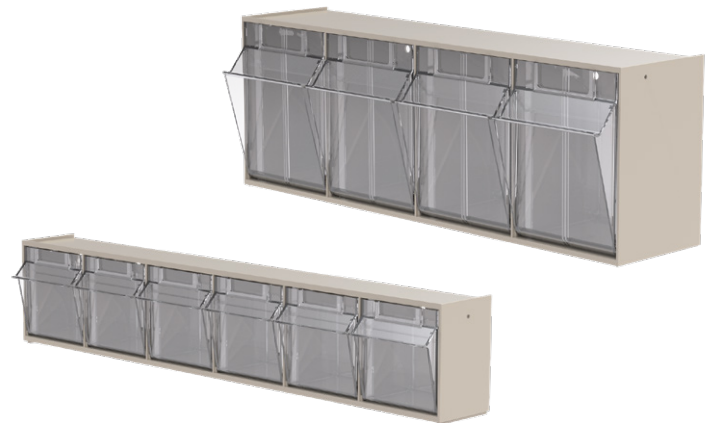
One color per carton: Specify Red, Blue or Clear. Order in carton quantities. * () = Max. # of divider slots per bin.



ShelfMax Bins	RED	BLUE	CLEAR	WIDTH DIVIDER
30040	4KEX4	4KEX6	40K450	4KEX9
30090	4KEW8	4KEX1	40K454	4KEY1
30080	10F108	10F110	40K452	10F123
30048	4KEW3	4KEW5	40K451	4KEX9
30098	4KEV7	4KEV9	40K456	4KEY1
30088	10F113	10F115	40K453	10F123
30094	10F118	10F120	40K455	4KEY1
30084	40J799	40J797	40J801	10F123
30014	40J781	40J779	40J782	40J896

TiltView® Bins

TIP OUT BIN CABINETS



TiltView Bins		Dimensions (In.)			Capacity/Qty.	
Model No.	Description	L	W	H	Ctn. Qty.	Capacity Lbs.
06702	2-Bin TiltView	12-5/16	23-5/8	14	1	30
06703	3-Bin TiltView	7-7/8	23-5/8	9-7/16	1	30
06704	4-Bin TiltView	6-3/4	23-5/8	8-3/16	1	25
06705	5-Bin TiltView	5-3/8	23-5/8	6-1/2	1	20
06706	6-Bin TiltView	3-3/4	23-5/8	4-1/2	1	15

TiltView Bins	
06702	39T747
06703	39T748
06704	39T749
06705	39T750
06706	39T751

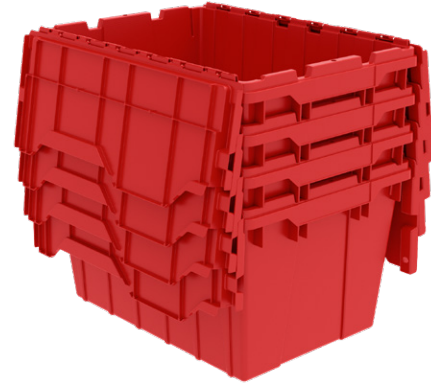
Attached Lid Containers

DISTRIBUTION CONTAINERS/STORAGE BOXES

Attached Lid Containers (ALCs)	Outside Dimensions (In.)			Inside Dimensions Top (In.)			Inside Dimensions Bottom (In.)		Capacity/Qty.				
	Model No.	L	W	H	L	W	H	L	W	Cu. Ft.	Gal.	Lbs.	Container Ctn. Qty.
39085	21-1/2	15	9	19-3/4	14-1/2	8-5/8	18-7/16	13-1/4	1.12	8.5	35	6	35 lbs./5
39120	21-1/2	15	12-1/2	19-3/4	14-1/2	12	18-7/16	13-1/4	1.62	12	65	6	65 lbs./5
39160	27	17	12-1/2	25	15-1/2	11	23-1/2	14	2.25	16.83	100	1	100 lbs./4
39170	21-1/2	15	17	19-3/4	14-1/2	16-7/8	18-7/16	13-1/4	2.28	17	100	3	100 lbs./3
39175	24	19-1/2	12-1/2	22	18	11	20-1/2	16-1/2	2.3	17.20	80	1	80 lbs./5
39280	28	21	15-1/2	26	19	14	25	18	3.82	28.57	100	1	100 lbs./4

Order in carton quantities. Specify color when ordering.

ALCs	RED	GRAY	BLUE	CLEAR	GREEN
39085	-	4W023	5LA32	-	-
39120	18C525	4W024	5LA33	49XH32	18C526
39160	-	3FY72	-	-	-
39170	-	1BZ16	5LA34	-	-
39175	-	3FY70	-	-	-
39280	-	3FY68	-	-	-



Attached/Detached Lid Containers

DISTRIBUTION CONTAINERS/STORAGE BOXES



Attached & Detached Lid Containers	
AR2012070201000	35HY20
AS3424201201000	3FY66
DL2420120201000	3HRZ3

Attached Lid Containers			Outside Dimensions (In.)			Bottom Dimensions (In.)			Truck Capacity						
Model No.	Description	Color	L	W	H	L	W	H	Weight lbs.	Weight Capacity lbs.	Volume Cu. Ft.	Nesting Ratio	Lid Type	53' Truck Stacked	53' Truck Nested
AR2012070201000	ALC Solid/Textured Bottom	FDA Lt. Gray	20	11.69	7.5	16.88	9.63	6.06	3.78	40	0.6	3:1	(R)	3,720	6,480
AS3424201201000	ALC Solid/Smooth Bottom; Open Handholds	FDA Lt. Gray	34	24	19.63	29.9	19.5	18.1	19	100	6.1	2.7:1	(S)	390	816

(R) Recessed Lid (S) Strapping Lid

Detached Lid Containers			Outside Dimensions (In.)			Bottom Dimensions (In.)			Truck Capacity (with Lids)						
Model No.	Description	Color	L	W	H	L	W	H	Weight lbs.	Weight Capacity lbs.	Vol w Lid Cu. Ft.	Nesting Ratio	53' Truck Stacked	53' Truck Nested	
DL2420120201000	Ergonomic Handles/Solid Bottom	FDA Lt. Gray	24	20	12.38	20.5	16.6	11	5.5	100	2.36	5.5:1	992	4,120	

Louvered Hanging Systems

CUSTOMIZABLE VERTICAL STORAGE
FOR HANGING BINS



AkroBin Louvered Hanging Systems			Dimensions (In.)				AkroBin Quantity to Fit Louvered Hanging System – AkroBins Model No.														
Model No.	Description	Ctn. Qty	L	W	H	Rack Wt. Cap. (lbs.)	30210	30220	30224	30230	30234	30235	30237	30239	30240	30250	30255	30260	30265	30270	30320
30618	Louvered Wall Panel	4	18	5/16	19	160	16	16	12	9	9	3	6	4	4	2	3	1	2	1	–
30632	Single Row Lvd Panel	2	31-15/16	5/16	3	80	7	7	7	5	5	2	5	3	3	1	1	2	3	1	–
30636	Louvered Wall Panel	4	35-3/4	5/16	19	160	32	32	24	18	18	9	15	8	8	4	6	3	4	2	3
	2 Louvered Wall Panels		35-3/4	5/16	37	–	72	72	48	36	36	18	30	16	16	8	12	9	12	6	6
	3 Louvered Wall Panels		35-3/4	5/16	55	–	104	104	72	54	54	27	45	24	24	12	18	12	20	8	9
	4 Louvered Wall Panels		35-3/4	5/16	73	–	144	144	96	72	72	36	60	36	36	18	24	18	28	12	12
30655	Louvered Wall Panel	1	52	5/16	34-1/8	750	96	96	60	45	45	20	40	24	24	12	15	8	18	6	5
30161	Louvered Wall Panel	1	36	5/16	61	1000	120	120	80	60	60	30	50	28	28	14	20	15	24	10	10
30118	Louvered Wall Panel	1	18	5/16	61	500	60	60	40	30	30	10	20	14	14	7	10	5	12	5	–
30651	Heavy-Duty Single-Sided Floor Rack	1	35-3/4	17	75-1/8	1000	144	144	96	72	72	36	60	36	36	18	24	18	28	12	12
30653	Heavy-Duty Double-Sided Floor Rack	1	35-3/4	32	75-1/8	2000	288	288	192	144	144	72	120	72	72	36	48	36	56	24	24
30638	Single-Sided Rivet Floor Rack	1	18	13-1/2	66-3/8	250	60	60	40	30	30	10	20	14	14	7	10	5	12	5	–
30658	Double-Sided Rivet Floor Rack	1	18	25	66-3/8	500	120	120	80	60	60	20	40	28	28	14	20	10	24	10	–
30661	Single-Sided Rivet Floor Rack	1	36-3/16	13-1/2	66-3/8	500	120	120	80	60	60	30	50	28	28	14	20	15	24	10	10
30676	Double-Sided Rivet Floor Rack	1	36-3/16	25	66-3/8	1000	240	240	160	120	120	60	100	56	56	28	40	30	48	20	20
30653DOLLY	Mobile Kit for 30653	1	–	–	–	500	–	–	–	–	–	–	–	–	–	–	–	–	–	–	–
LVDMOBILE	Mobile Kit for 30676	1	–	–	–	1500	–	–	–	–	–	–	–	–	–	–	–	–	–	–	–
30661DOLLY	Floor Rack Dolly for 30661	1	37	24	6	500	–	–	–	–	–	–	–	–	–	–	–	–	–	–	–

Specify color when ordering.

Louvered Systems & Dollies	BEIGE	GRAY	TEX WHITE
30118	45YM45	1UMD7	45YM46
30161	10A138	1UMD8	–
30618	–	3AJ36	45YM44
30632	–	44XP71	–
30636	4KEP2	2W717	45YM47
30651	–	1UME5	–

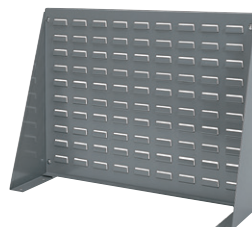
Louvered Systems & Dollies	BEIGE	GRAY	TEX WHITE
30653	–	4TJ79	–
30655	–	40L708	–
30658	–	45MV85	–
30661	10A139	1UME2	–
30661DOLLY	49XH35	49XH34	–
30676	10A140	1UME3	–

Louvered Bench Rack

KEEP PARTS AND SUPPLIES IN EASY REACH

Louvered Bench Rack			Dimensions (In.)				AkroBin Quantity to Fit Louvered Hanging System – AkroBins Model No.													
Model No.	Description	Ctn. Qty	L	W	H	Rack Wt. Cap. (lbs.)	30210	30220	30224	30230	30234	30235	30237	30239	30240	30250	30255	30260	30265	30320
98600	Gray Bench Rack	1	27-15/16	8-9/16	19-9/16	120	30	30	18	12	12	6	12	6	6	2	3	2	6	–
98636	Gray Bench Rack	1	36	8	20	120	40	40	24	18	18	9	15	8	8	4	6	3	8	3

Louvered Bench Racks	
98600	2W718
98636	1UMD9



Nest & Stack Totes

EXTREMELY DURABLE INDUSTRIAL-GRADE TOTES

Nest & Stack Totes (NSTs)	Outside Dimensions (In.)			Inside Dimensions (In.)					Capacity/Qty.				Accessories		
	Model No.	L	W	H	A	B	C	D	E	Cu. Ft.	Gal	Lbs.	Tote Ctn. Qty.	Stacking Height	Lid Model
35180	18	11	6	10	15	14-3/8	9-3/8	5-7/8	0.5	3.7	45	6	6	35181	6
35185	18	11	9	10	15	14-1/8	9-1/8	8-7/8	0.76	5.69	60	6	6	35181	6
35190	19-1/2	15-1/2	10	14-1/2	15-1/2	14-3/4	13-1/2	9-7/8	1.2	9	65	6	6	35191	6
35195	19-1/2	15-1/2	13	14-1/2	15-1/2	14-5/8	13-3/8	12-7/8	1.7	12.93	85	6	6	35191	6
35200	19-1/2	13-1/2	8	12-3/8	15-3/4	15-1/4	11-1/2	7-7/8	0.8	6.1	55	6	6	35201	6
35225	23-1/2	19-1/2	10	18-1/4	19-3/8	18	16-7/8	9-7/8	2	14.98	70	3	6	35231	3
35230	23-1/2	19-1/2	13	18-1/8	19-3/8	18	16-7/8	12-7/8	2.6	19.4	90	3	6	35231	3
35240	23-1/2	15-1/2	12	14-1/4	19-3/8	18-1/4	13	11-7/8	1.7	12.9	75	3	6	35241	3
35300	29-1/2	19-1/2	15	18-1/4	25	23-1/2	16-5/8	14-7/8	3.7	27.4	100	3	6	35301	3

One color per carton. Order in carton quantities.

NSTs	RED	GRAY	BLUE
35180	5KY91	5W062	5KY92
35181 (Lid)	9NTX4	6A266	8AN35
35185	5KY93	5YN02	5KY94
35190	5KY95	5W063	5KY96
35191 (Lid)	9G804	6A268	8AN36
35195	5KY99	5YN03	5LA10
35200	5KY97	5W877	5KY98
35201 (Lid)	8YA64	6A267	8AN37
35225	5LA13	5YN04	5LA14
35230	5LA15	4W051	5LA16
35231 (Lid)	9CKY3	6A270	9RWG4
35240	5LA11	5W878	5LA12
35241 (Lid)	8AN57	6A269	8AN56
35300	5LA17	5W879	5LA18
35301 (Lid)	9WZG6	6A271	8AN58



Label Holders		
Model No.	Pkg. Qty.	Label Size (In.)
35010	6	3-3/4 x 5
Label Holders		
35010	3HRX5	

Cross-Stack Jumbo Lug Akro-Tubs

FOOD HANDLING & PROCESSING CONTAINER



Jumbo Lug		Outside Dimensions (In.)			Capacity/Qty.		
Model No.	Color	L	W	H	Cu. Ft.	Bushel	Lbs.
JL2516096800000	Natural	25	16	8-1/2	1.25	1.00	100
34305	Gray	25	16	8-1/2	1.25	1.00	100

Jumbo Lug	
JL2516096800000	2RY50
34305GREY	20XK63

InSight® Bins

ULTRA-CLEAR
POLYCARBONATE BINS



InSight Model No.	Outside Dimensions (In.)			Inside Dimensions (In.)			Capacity/Quantity		Accessories	
	L	W	H	L	W	H	Capacity (lbs.)	Bin Ctn. Qty.	Lid	Lid Pkg Qty.
305A1	5-3/8	4-1/8	3-1/4	4-1/4	3-1/8	2-5/8	10	16	305A2	16
305A3	7-3/8	4-1/8	3-1/4	6-1/4	3-1/8	2-5/8	10	16	305A4	16
305A5	10-7/8	4-1/8	3-1/4	9-1/4	3-1/8	2-5/8	15	12	305A6	12
305B1	10-7/8	5-1/2	5-1/4	9-7/16	4-1/8	4-7/16	25	12	305B2	12

Order in carton quantities.

InSight Bins	BIN	LID
305A1	6GDL3	6GDL4
305A3	6GDL5	6GDL6
305A5	6GDL7	6GDL8
305B1	6GDL9	6GDN0

Akro-Grids

DIVIDABLE GRID CONTAINERS



Akro-Grids Model No.	Outside Dimensions (In.)			Inside Dimensions (In.)					Capacity/Qty.				Accessories			
	L	W	H	A	B	C	D	E	Cu. Ft.	Gal	Lbs.	Bin Ctn. Qty.	Long Divider*	Short Divider*	Divider Pkg. Qty.	Max. No. of Compartments
33105	10-7/8	8-1/4	5	6-11/16	9-5/16	9-1/8	6-1/2	4-5/8	.16	1.2	25	20	42105 (5)	41105 (7)	6	48
33162	16-1/2	10-7/8	2-1/2	9-3/16	14-13/16	14-3/4	9-1/8	2-3/8	0.20	1.5	20	12	42162 (7)	-	6	96
33164	16-1/2	10-7/8	4	9-3/8	14-15/16	14-13/16	9-3/16	3-7/8	.29	2.2	20	12	42164 (7)	41164 (11)	6	96
33165	16-1/2	10-7/8	5	9-3/16	14-13/16	14-5/8	9	4-7/8	0.39	2.9	35	12	42165 (7)	-	6	96
33166	16-1/2	10-7/8	6	9-5/16	14-7/8	14-3/4	9-1/8	5-9/16	.44	3.3	35	8	42166 (7)	41166 (11)	6	96
33168	16-1/2	10-7/8	8	9-5/16	14-15/16	14-5/8	9-1/16	7-9/16	.59	4.4	40	6	42168 (7)	41168 (11)	6	96
33220	22-3/8	17-3/8	10	15-1/4	20-1/8	19-7/8	14-7/8	9-7/8	1.66	12.4	50	2	42220 (11)	41220 (15)	6	192
33222	22-1/2	17-1/2	12	15-5/16	20-5/16	19-15/16	14-15/16	11-13/16	2.10	15.9	60	3	42222 (11)	-	6	192
33223	22-1/2	17-3/8	3	15-7/16	20-1/2	20-7/16	15-3/8	2-1/2	.47	3.5	30	6	42223 (11)	41223 (15)	6	192
33224	22-3/8	17-3/8	4	15-1/16	20-1/16	20	15	3-7/8	.61	4.6	30	6	42224 (11)	41224 (15)	6	192
33226	22-3/8	17-3/8	6	15-1/8	20-1/8	19-7/8	14-7/8	5-7/8	.96	7.2	40	4	42226 (11)	41226 (15)	6	192
33228	22-3/8	17-3/8	8	15-1/8	20-1/8	19-7/8	14-7/8	7-7/16	1.30	9.7	50	3	42228 (11)	41228 (15)	6	192

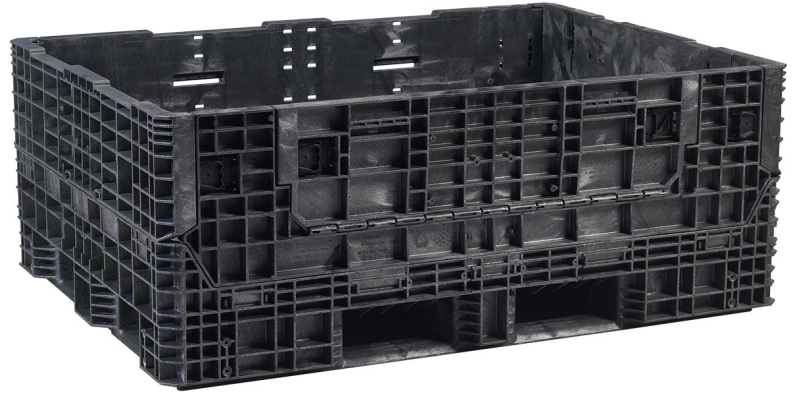
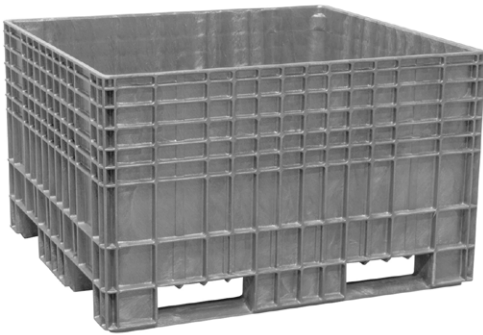
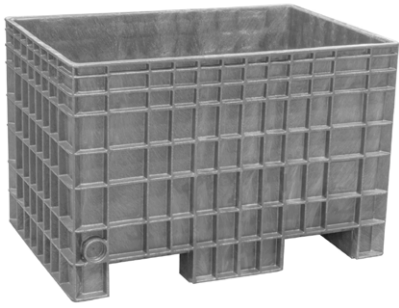
Order in carton quantities. One color per carton. Specify Red, Blue or Gray. Also available in Clear, minimum quantities apply. *(*) = max # of dividers.

Akro-Grids	RED	GRAY	BLUE	CLEAR	LENGTH DIVIDER	WIDTH DIVIDER
33105	2RV36	5YN01	2RV35	40K428	5YN18	5YN17
33162	45YM53	45YM55	-	-	45YM67	-
33164	2RV38	5LA19	2RV37	40K429	5LA24	5LA23
33165	45YM57	45YM59	-	-	45YM69	-
33166	2RV40	4W026	2RV39	40K430	2A577	2A576
33168	2RV42	4W027	2RV41	40K431	2A579	2A578

Akro-Grids	RED	GRAY	BLUE	CLEAR	LENGTH DIVIDER	WIDTH DIVIDER
33220	2RV44	5LA20	2RV43	40K432	5LA26	5LA25
33222	45YM61	45YM63	45YM62	-	45YM71	-
33223	10A118	10A120	10A119	-	10A122	10A121
33224	2RV46	5LA21	2RV45	-	5LA28	5LA27
33226	2RV48	5LA22	2RV47	40K435	5LA30	5LA29
33228	2RV50	4W028	2RV49	-	2A581	2A580

Bulk Containers

MATERIAL HANDLING BOXES FOR COMPONENT SHIPPING AND IN-PROCESS HANDLING



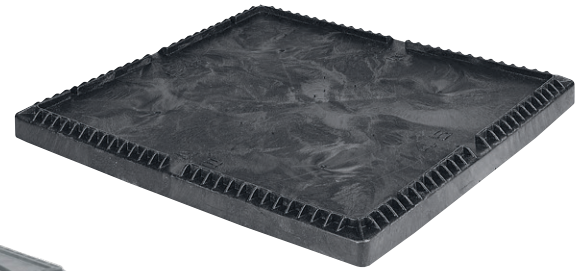
Bulk Containers - Fixed Wall				Capacity				Fork Tunnel Dimensions				Truck Capacity		
Model No.	Description	Color	Doors	Weight lbs.	Lbs.	Vol. Cu. Ft.	Vol. Gal.	Long Side L	Long Side H	Short Side L	Short Side H	Return Ratio	53' Truck Opened	53' Truck Collapsed
BF4229280010000	Stack Only Agricultural Container 42x29x28	Black	0 Doors	74	900	13.8	103.3	10.5	3.9	—	—	1:1	132	—
BF4229280051000	Stack Only Agricultural Container 42x29x28	Gray	0 Doors	74	900	13.8	103.3	10.5	3.9	—	—	1:1	132	—
BF4844290010000	Stack Only Agricultural Container 48x44x30	Black	0 Doors	95	700	25.9	185.2	11.7	3.1	11.7	4.3	1:1	84	—
BF4844290051000	Stack Only Agricultural Container 48x44x30	Gray	0 Doors	95	700	25.9	185.2	11.7	3.1	11.7	4.3	1:1	84	—

Bulk Containers - Collapsible				Capacity				Fork Tunnel Dimensions				Truck Capacity		
Model No.	Description	Color	Doors	Weight lbs.	Lbs.	Vol. Cu. Ft.	Vol. Gal.	Long Side L	Long Side H	Short Side L	Short Side H	Return Ratio	53' Truck Opened	53' Truck Collapsed
BG4840460263000	General Purpose 48" x 40" x 46" 9 Feet Base Bulk Box	Blue	2 Doors on Width	142	1200	38.5	288	13	3.5	12	3.5	3.6:1	60	240
BH4840252010000	Heavy-Duty 48" x 40" x 25" Bulk Box	Black	2 Doors on Length	121	2500	16.85	126	11.75	3.16	10.38	4.13	2.1:1	120	240
BH4840342010000	Heavy-Duty 48" x 40" x 34" Bulk Box	Black	2 Doors on Length	141.2	2500	24.46	183	11.75	3.16	10.38	4.13	3:1	90	242
BH4845252010000	Heavy-Duty 48" x 45" x 25" Bulk Box	Black	2 Doors on Length	140	2500	19.74	148	11.88	3.25	10.5	3.69	2.1:1	112	224
BH4845342010000	Heavy-Duty 48" x 45" x 34" Bulk Box	Black	2 Doors on Length	163	2500	28.65	214	11.88	3.25	10.5	3.69	3:1	84	224
BN3230252010000	Industry Standard 32" x 30" x 25 Bulk Box	Black	2 Doors on Length	63	1800	8.6	64.3	10.6	3.5	7.6	2	1.9:1	240	480
BN3230342010000	Industry Standard 32" x 30" x 34" Bulk Box	Black	2 Doors on Length	76	1800	12.9	96.5	10.6	3.5	7.6	2	2.6:1	180	480
BN4845252010000	Extra-Duty 48" x 45" x 25" Bulk Box	Black	2 Doors on Length	100	2500	19.1	143	31.8	10.3	12.3	3.3	2.3:1	104	208
BN4845342010000	Extra-Duty 48" x 45" x 34" Bulk Box	Black	2 Doors on Length	122	2500	28.7	215	11	3.3	12.3	3.3	3:1	78	234
BN4845342023000	Extra-Duty 48" x 45" x 34" Bulk Box	Blue	2 Doors on Length	122	2500	28.7	215	11	3.3	12.3	3.3	3:1	78	234
B55748342210000	Extended Length 57.25" x 48" x 34" Bulk Box	Black	2 Doors on Length; 2 Doors on Width	171	2000	36.65	274	10.2	3.2	10.8	3.2	2.5:1	66	176
B56448340210002	Extended Length 64.5" x 48" x 34" Bulk Box	Black	2 Doors on Width	183	2000	41.7	312	10.2	3.2	10.8	3.2	2.5:1	57	152

Bulk Boxes	
BF4229280010000	10A142
BF4229280051000	55AA16
BF4844290010000	10A141
BF4844290051000	55AA15
BF484519XP23000	2YA81
BG4840460263000	4TF41
BH4840252010000	36XE23
BH4840342010000	1XGG6
BH4845252010000	36XE24
BH4845342010000	1XGG7
BN3230252010000	14L050
BN3230342010000	1NUR6
BN4845252010000	39H822
BN4845342010000	39H823
BN4845342023000	39H824
BN4845412010000	36XE25
BN4845442010000	36XE26
BN4845512010000	36XE27
BS6448340210002	2YA79

Bulk Container Lids & Top Caps

SECURE CONTAINER LOADS FOR SHIPPING & STACKING



Bulk Container Lids & Pallet Top Caps			Outside Dimensions (In.)				
Model No.	Description	Color	L	W	H	Weight lbs.	Container Compatibility
TH4840020010000	Structural Foam Lid	Black	48.4	40.4	2.1	18.6	Fits BH4840 Series
TH4845020010000	Structural Foam Lid	Black	48.25	45.25	2.25	20.7	Fits BH4845 Series
TL4229040010000	Structural Foam Lid	Black	42.5	29.7	3.2	15.3	Fits BF4229
TL4229040051000	Structural Foam Lid	Gray	42.5	29.7	3.2	15.3	Fits BF4229
TL4840030010000	Structural Foam Lid	Black	47.8	40.0	2.8	19.1	Fits BI4840
TL4844030010000	Structural Foam Lid	Black	48.9	44.8	2.8	20.9	Fits BF4844
TL4844030051000	Structural Foam Lid	Gray	48.9	44.8	2.8	20.9	Fits BF4844
TS3230020010000	Structural Foam Lid	Black	32.75	30.75	2.3	10.3	Fits BS3230 Series
TS4840020010000	Structural Foam Lid	Black	49.1	41.1	2.5	21.8	Fits BG4840 Series with Runners
TS4845030010000	Structural Foam Lid	Black	49.8	46.8	3.8	25	Fits BE4845, BN4845 and BX4845 Series

Lids & Top Caps	
TH4840020010000	1XGG8
TH4845020010000	1XGG9
TL4229040010000	10A144
TL4229040051000	55AA17
TL4840030010000	1NUR9
TL4844030010000	10A143
TL4844030051000	55AA18
TS3230020010000	4TF36
TS4840020010000	4TF39
TS4845030010000	4TF37

Platform Trucks

HEAVY-DUTY STRUCTURAL FOAM PLATFORM TRUCKS



Platform Truck – 1 Crossbar Swayback or 1 Open Swayback				
Model No.	Deck Size	Caster Type	Handle Type	Caster Size (In.)
V90163A1411	24 x 48	Pro-Tech Polyurethane	Open	6
V90163A1412	24 x 48	Pro-Tech Polyurethane	Crossbar	6
V90166A1411JB	24 x 48	Pro-Tech Polyurethane	Open	6
V901819392412AM	24 x 48	Pneumatic	Crossbar	8
V90181A1411	24 x 48	Pneumatic	Open	8
V90182A1412	24 x 48	Pro-Tech Polyurethane	Crossbar	6
V901849392412AM	24 x 48	Polyolefin	Crossbar	8
V90262A1011	30 x 60	Polyolefin	Open	8
V90262A1012	30 x 60	Polyolefin	Crossbar	8
V902849393012AM	30 x 60	Polyolefin	Crossbar	8

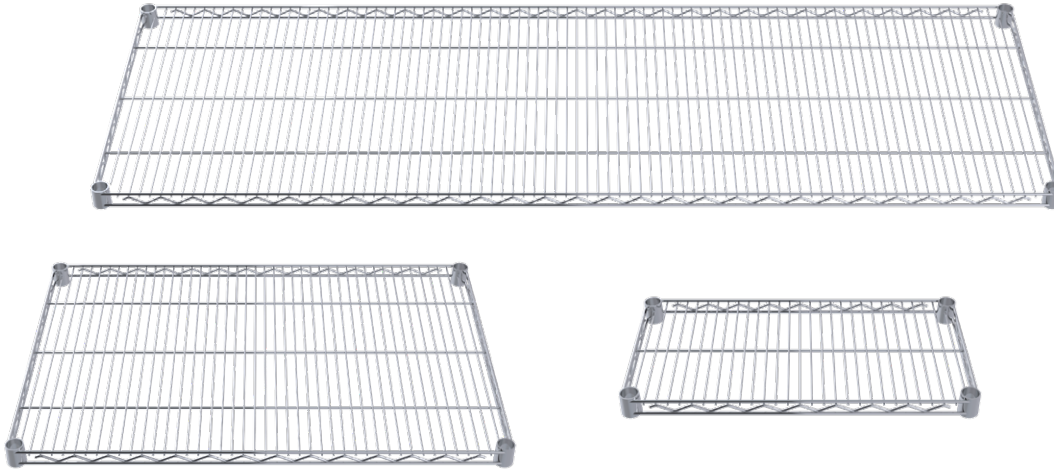
Platform Trucks	
V90163A1411	44U425
V90163A1412	44U426
V90166A1411JB*	34TJ78
V901819392412AM	44U458
V90181A1411	44U459

Platform Trucks	
V90182A1412	44U434
V901849392412AM	44U462
V90262A1011	44U439
V90262A1012	44U440
V902849393012AM	44U468

Ships in carton unassembled. *Ships fully assembled

Wire Shelving Components

BUILD CUSTOM SHELVING UNITS



Wire Shelves - Chrome		
Model No.	Description	Ctn. Qty.
AWS1224SHELF	12" x 24" Horizontal Wire Shelf	4
AWS1236SHELF	12" x 36" Horizontal Wire Shelf	4
AWS1436SHELF	14" x 36" Horizontal Wire Shelf	4
AWS1824SHELF	18" x 24" Horizontal Wire Shelf	4
AWS1830SHELF	18" x 30" Horizontal Wire Shelf	4
AWS1836SHELF	18" x 36" Horizontal Wire Shelf	4
AWS1848SHELF	18" x 48" Horizontal Wire Shelf	4
AWS2436SHELF	24" x 36" Horizontal Wire Shelf	4
AWS2448SHELF	24" x 48" Horizontal Wire Shelf	4
AWS2460SHELF	24" x 60" Horizontal Wire Shelf	2
AWS2472SHELF	24" x 72" Horizontal Wire Shelf	2

Wire Shelving Posts & Accessories		
Model No.	Description	Pkg. Qty.
AWP54UPRIGHT	54" Shelf Post	4
AWP63UPRIGHT	63" Shelf Post	4
AWP74UPRIGHT	74" Shelf Post	4
AWP86UPRIGHT	86" Shelf Post	4
AWFOOTLEVEL4PK	Set of 4 Leveling Steel Feet	4
AWFOOTPLATE4PK	Set of 4 Steel Feet Immobilizers	4
AWDONUT	Donut Bumper	1
AWSHOOK8PK	Set of 8 "S" Hooks	8
AWCLIP4PK	Set of 4 Quick-Adjust Clips	4



Label Holders	Dimensions (In.)				Total No.	
	W	H	Cards Per Sheet	Sheets Per Pack	Cards Per Pack	Label Holders
29306	3	1-1/4	16	3	48	25
29308	3	1-1/4	16	3	48	25



Wire Shelves	
AWS1224SHELF	44XU43
AWS1236SHELF	44XU44
AWS1436SHELF	44XU58
AWS1824SHELF	44XU59
AWS1830SHELF	44XU60
AWS1836SHELF	44XU78

Wire Shelves	
AWS1848SHELF	44XU82
AWS2436SHELF	44XV12
AWS2448SHELF	44XV16
AWS2460SHELF	44XV21
AWS2472SHELF	44XV22

Accessories	
AWP54UPRIGHT	44XU34
AWP63UPRIGHT	44XU35
AWP74UPRIGHT	44XU36
AWP86UPRIGHT	44XU37
AWFOOTLEVEL4PK	50KL61
AWFOOTPLATE4PK	50KL62

Accessories	
AWDONUT	50KL60
AWSHOOK8PK	44XV26
AWCLIP4PK	50KL55
29306	36MY25
29308	44XN82

Wire Shelving Starter Units

COMPLETE SHELVING UNITS



Wire Shelving Starter Units		Components		
Model No.	Description	Post Qty.	Shelf Qty.	S-Hook Qty.
AWS631436SU	Wire Shelving 63" High 14 x 36 Starter Unit	4	4	1 - 8 Pack
AWS631836SU	Wire Shelving 63" High 18 x 36 Starter Unit	4	4	1 - 8 Pack
AWS631848SU	Wire Shelving 63" High 18 x 48 Starter Unit	4	4	1 - 8 Pack
AWS632436SU	Wire Shelving 63" High 24 x 36 Starter Unit	4	4	1 - 8 Pack
AWS632448SU	Wire Shelving 63" High 24 x 48 Starter Unit	4	4	1 - 8 Pack
AWS741224SU	Wire Shelving 74" High 12 x 24 Starter Unit	4	4	1 - 8 Pack
AWS741236SU	Wire Shelving 74" High 12 x 36 Starter Unit	4	4	1 - 8 Pack
AWS741436SU	Wire Shelving 74" High 14 x 36 Starter Unit	4	4	1 - 8 Pack
AWS741836SU	Wire Shelving 74" High 18 x 36 Starter Unit	4	4	1 - 8 Pack
AWS741848SU	Wire Shelving 74" High 18 x 48 Starter Unit	4	4	1 - 8 Pack
AWS742448SU	Wire Shelving 74" High 24 x 48 Starter Unit	4	4	1 - 8 Pack
AWS742460SU	Wire Shelving 74" High 24 x 60 Starter Unit	4	4	1 - 8 Pack
AWS742472SU	Wire Shelving 74" High 24 x 72 Starter Unit	4	4	1 - 8 Pack
AWS861236SU	Wire Shelving 86" High 12 x 36 Starter Unit	4	4	1 - 8 Pack
AWS861836SU	Wire Shelving 86" High 18 x 36 Starter Unit	4	4	1 - 8 Pack
AWS861848SU	Wire Shelving 86" High 18 x 48 Starter Unit	4	4	1 - 8 Pack
AWS862436SU	Wire Shelving 86" High 24 x 36 Starter Unit	4	4	1 - 8 Pack
AWS862448SU	Wire Shelving 86" High 24 x 48 Starter Unit	4	4	1 - 8 Pack

Wire Starter Units	
AWS631436SU	Sourcing
AWS631836SU	Sourcing
AWS631848SU	Sourcing
AWS632436SU	Sourcing
AWS632448SU	Sourcing
AWS741224SU	Sourcing
AWS741236SU	Sourcing
AWS741436SU	Sourcing
AWS741836SU	Sourcing

Wire Starter Units	
AWS741848SU	Sourcing
AWS742448SU	Sourcing
AWS742460SU	Sourcing
AWS742472SU	Sourcing
AWS861236SU	Sourcing
AWS861836SU	Sourcing
AWS861848SU	Sourcing
AWS862436SU	Sourcing
AWS862448SU	Sourcing

Wire Shelving Systems

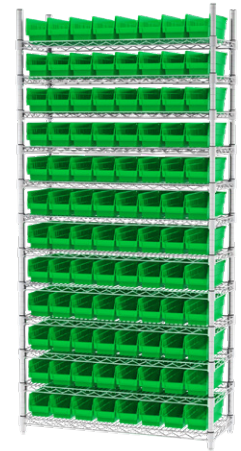
KITS: SHELVING + BINS

4" Shelf Bin Wire Shelving Systems			Bin Dimensions (In.)			Shelf Dimensions (In.)			Quantity	
Model No.	Description	Available Colors	L	W	H	D	L	H	Bins	Shelves
AWS143630120	Wire Shelving w/ 30120 Bins	B, R, Y, SC	11-5/8	4-1/8	4	14	36	74	96	12
AWS143630130	Wire Shelving w/ 30130 Bins	B, R, Y, G, SC	11-5/8	6-5/8	4	14	36	74	60	12
AWS143630150	Wire Shelving w/ 30150 Bins	B, R, Y, G, SC	11-5/8	8-3/8	4	14	36	74	48	12
AWS143630170	Wire Shelving w/ 30170 Bins	B, R, Y, G, SC	11-5/8	11-1/8	4	14	36	74	36	12
AWS183630128	Wire Shelving w/ 30128 Bins	B, R, Y, G, SC	17-7/8	4-1/8	4	18	36	74	96	12
AWS183630138	Wire Shelving w/ 30138 Bins	B, R, Y, G, SC	17-7/8	6-5/8	4	18	36	74	60	12
AWS183630158	Wire Shelving w/ 30158 Bins	B, R, Y, G, SC	17-7/8	8-3/8	4	18	36	74	48	12
AWS183630178	Wire Shelving w/ 30178 Bins	B, R, Y, G, SC	17-7/8	11-1/8	4	18	36	74	36	12
AWS244830164	Wire Shelving w/ 30164 Bins	SC	23-5/8	6-5/8	4	24	48	74	66	12
AWS244830184	Wire Shelving w/ 30184 Bins	B, R, Y, G, SC	23-5/8	8-3/8	4	24	48	74	60‡	12
AWS244830174	Wire Shelving w/ 30174 Bins	B, R, Y, G, SC	23-5/8	11-1/8	4	24	48	74	48‡	12

Bin color code: R=Red, B=Blue, Y=Yellow, G=Green, SC=Clear. Specify one bin color when ordering. ‡Bonus bins included.

AkroBin Wire Shelving Systems			Bin Dimensions (In.)			Shelf Dimensions (In.)			Quantity	
Model No.	Description	Available Colors	L	W	H	D	L	H	Bins	Shelves
AWS143630240	Wire Shelving w/ 30240 Bins	B, R, Y, G, K, S, SC	14-3/4	8-1/4	7	14	36	74	36	4
AWS143630250	Wire Shelving w/ 30250 Bins	B, R, Y, G, K, S, SC	14-3/4	16-1/2	7	14	36	74	18	4
AWS183630265	Wire Shelving w/ 30265 Bins	B, R, Y, G, S, SC	18	8-1/4	9	18	36	74	18‡	5
AWS183630270	Wire Shelving w/ 30270 Bins	B, R, Y, G, K, S, SC	18	16-1/2	11	18	36	74	9‡	5
AWS143630320	Wire Shelving w/ 30320 Bins	B	8-5/8	33	5	14	36	74	12‡	11

Bin color code: R=Red, B=Blue, Y=Yellow, G=Green, K=Black, S=Stone, SC=Clear. Specify one bin color when ordering. ‡Bonus bins included.

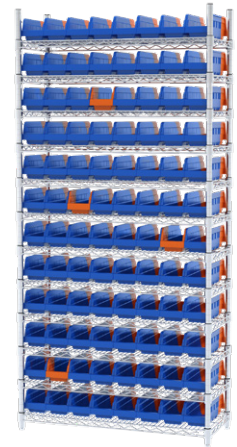


Wire Shelving Systems

KITS: SHELVING + BINS

Indicator Wire Shelving Systems			Bin Dimensions (In.)			Shelf Dimensions (In.)			Quantity	
Model No.	Description	Indicator Colors	L	W	H	D	L	H	Bins	Shelves
AWS143636442BK	Wire Shelving w/ 36442 Bins	Black/Red	11-5/8	4-1/4	4	14	36	74	96‡	12
AWS143636462BK	Wire Shelving w/ 36462 Bins	Black/Red	11-5/8	6-3/4	4	14	36	74	60‡	12
AWS183636448B	Wire Shelving w/ 36448 Bins	Blue/Orange	17-7/8	4-1/8	4	18	36	74	96‡	12
AWS183636448BK	Wire Shelving w/ 36448 Bins	Black/Red	17-7/8	4-1/8	4	18	36	74	96‡	12
AWS183636468B	Wire Shelving w/ 36468 Bins	Blue/Orange	17-7/8	6-5/8	4	18	36	74	60‡	12
AWS183636468BK	Wire Shelving w/ 36468 Bins	Black/Red	17-7/8	6-5/8	4	18	36	74	60‡	12

‡Bonus bins included.



Stak-N-Store Wire Shelving Systems			Bin Dimensions (In.)			Shelf Dimensions (In.)			Quantity	
Model No.	Description	Available Colors	L	W	H	D	L	H	Bins	Shelves
AWS184813017	Wire Shelving w/ 13017 Bins	B	15-1/2	19-7/8	12-7/16	18	48	74	9‡	5
AWS183613014	Wire Shelving w/ 13014 Bins	GRY, B	17-1/2	10-7/8	12-1/2	18	36	74	12	5
AWS183613018	Wire Shelving w/ 13018 Bins	GRY, B, SC	17-1/2	16-1/2	12-1/2	18	36	74	8	5
AWS18365SNS	Wire Shelving w/ 13014 & 13018 Bins	GRY, B, SC	See Above			18	36	74	8 / 6 ‡	5

Bin color code: B=Blue, GRY=Gray, SC=Clear. Specify one bin color when ordering. ‡Bonus bins included.



Super-Size AkroBin Wire Shelving Systems			Bin Dimensions (In.)			Shelf Dimensions (In.)			Quantity	
Model No.	Description	Available Colors	L	W	H	D	L	H	Bins	Shelves
AWS184830280	Wire Shelving w/ 30280 Bins	R, B, Y	20	12-3/8	6	18	48	74	24	9
AWS184830281	Wire Shelving w/ 30281 Bins	R, B, Y	20	12-3/8	8	18	48	74	18	7
AWS184830282	Wire Shelving w/ 30282 Bins	R, B, Y	20	12-3/8	12	18	48	74	12	5
AWS184830283	Wire Shelving w/ 30283 Bins	R, B, Y	20	18	12	18	48	74	8	5
AWS18485AB	Wire Shelving w/ 30280, 30281, 30282, 30283 Bins	B	See Above			18	48	74	4 / 3 / 4 / 4‡	6
AWS24360284	Wire Shelving w/ 30284 Bins	R, B, Y, SC	23-7/8	8-1/4	7	24	36	74	28	8
AWS24360287	Wire Shelving w/ 30287 Bins	R, B, Y, SC	23-7/8	11	10	24	36	74	16‡	6
AWS24360288	Wire Shelving w/ 30288 Bins	R, B, Y, SC	23-7/8	16-1/2	11	24	36	74	12	3
AWS243605AB	Wire Shelving w/ 30287 & 30288 Bins	B	See Above			24	36	74	12 / 6‡	3
AWS24361288	Wire Shelving w/ 30288 Bins	R, B, Y, SC	23-7/8	16-1/2	11	24	36	63	10	3

Bin color code: R=Red, B=Blue, Y=Yellow, SC=Clear. Specify one bin color when ordering. ‡Bonus bins included.



Wire Shelving Systems

KITS: SHELVING + BINS



1800 Series AkroBin Wire Shelving Systems			Bin Dimensions (In.)			Shelf Dimensions (In.)			Quantity	
Model No.	Description	Available Colors	L	W	H	D	L	H	Bins	Shelves
AWS2460M30358	Mobile Wire Shelving w/ 30358 Bins	Beige	20-1/2	11	7	24	60	68	30	6



Akro-Tub Wire Shelving Systems			Bin Dimensions (In.)			Shelf Dimensions (In.)			Quantity	
Model No.	Description	Available Colors	L	W	H	D	L	H	Bins	Shelves
AWS2460M34240	Mobile Wire Shelving w/ 34240 Tubs	GRY	19	24-1/2	9-1/2	24	60	68	12	4



Shelving w/Bins	
AWS143630120B	3FYW9
AWS143630120R	3FYW7
AWS143630120SC	40K512
AWS143630120Y	3FYW8
AWS143630130R	3FYX3
AWS143630130Y	3FYX4
AWS143630150B	44XU50
AWS143630150R	44XU52
AWS143630170B	44XU53
AWS143630240B	4KET9
AWS143630240G	4KEU1
AWS143630240K	4KEU3
AWS143630240R	4KET7
AWS143630240S	4KEU4
AWS143630240SC	4KEU2
AWS143630240Y	4KET8
AWS143630250B	4KEU7
AWS143630250G	4KEU8
AWS143630250K	4KEV1
AWS143630250R	4KEU5
AWS143630250SC	4KEU9
AWS143630250Y	4KEU6
AWS143630320B	44XU54
AWS143630320S	44XU55

Shelving w/Bins	
AWS143630320SC	44XU56
AWS143630320Y	44XU57
AWS143636442BK	45MV93
AWS143636462BK	45MV94
AWS183613014B	18D901
AWS183613014G	18D898
AWS183613018B	18D905
AWS183613018G	18D903
AWS183630128B	3FYY1
AWS183630128R	3FYX8
AWS183630138B	3FYY6
AWS183630138R	3FYY4
AWS183630138Y	3FYY5
AWS183630158B	44XU66
AWS183630158R	44XU68
AWS183630158Y	44XU69
AWS183630178R	44XU70
AWS183630178Y	44XU71
AWS183630265B	44XU72
AWS183630265R	44XU73
AWS183630265S	44XU74
AWS183630270B	10A133
AWS183630270G	10A137
AWS183630270K	10A135

Shelving w/Bins	
AWS183630270R	10A131
AWS183630270SC	10A136
AWS183630270Y	10A132
AWS183636448B	45MV95
AWS183636448BK	45MV96
AWS183636468B	45MV97
AWS183636468BK	45MV98
AWS1836SNSB	18D909
AWS1836SNSR	18D908
AWS1836SNSSC	18D910
AWS184813017B	3FYZ1
AWS184830260B	10A126
AWS184830260G	10A130
AWS184830260K	10A128
AWS184830260R	10A124
AWS184830260S	10A127
AWS184830260SC	10A129
AWS184830260Y	10A125
AWS184830280B	10A054
AWS184830280R	10A053
AWS184830280Y	10A055
AWS184830281B	10A057
AWS184830281R	10A056
AWS184830281Y	10A058

Shelving w/Bins	
AWS184830282B	10A060
AWS184830282R	10A059
AWS184830282Y	10A061
AWS184830283B	10A063
AWS184830283R	10A062
AWS184830283Y	10A064
AWS1848SABB	44XU81
AWS24360284B	44XU88
AWS24360284R	44XU89
AWS24360284SC	40K507
AWS24360287B	44XU90
AWS24360288B	44XU91
AWS24360288SC	40K509
AWS24360288Y	44XU92
AWS24360SABB	44XU93
AWS24361288B	44XU94
AWS24361288SC	40K511
AWS244830164SC	40K521
AWS244830174SC	40K522
AWS244830184SC	40K523
AWS2460M30358	4KEV3
AWS2460M34240	44XV20

Straight Wall Containers

INDUSTRIAL REUSABLE CONTAINERS

Straight Wall Containers (SWCs)			Outside Dimensions (In.)			Inside Dimensions Bottom (In.)			Capacity/Qty.			Stacked Capacity/Qty.	
Model No. Mesh Side & Base	Model No. Mesh Side/Solid Base	Model No. Solid Side & Base	L	W	H	L	W	H	Cu. Ft.	Gal.	Container Ctn. Qty.	Solid Bottom	Mesh Bottom
37208	37278	37288	15-3/4	11-3/4	8-1/4	14	10	8	0.89	5.12	12	83 lbs./6	30 lbs./6
37608	37678	37688	23-3/4	15-3/4	8-1/4	22	14	8	1.78	11.19	4	83 lbs./6	45 lbs./6
37612	37672	37682	23-3/4	15-3/4	12-1/4	22	14	12	2.67	8.32	3	125 lbs./5	45 lbs./5
37616	37676	37686	23-3/4	15-3/4	16-1/8	22	14	16	3.55	11.07	2	150 lbs./4	45 lbs./4

Order in carton quantities.



SWC	
37208	5YN05
37278	5YN06
37288	5YN07
37608	5YN08
37612	5YN09
37616	5YN10
37672	5YN11
37676	5YN12
37678	5YN13
37682	5YN14
37686	5YN15
37688	5YN16

Rail Hanging Systems

IDEAL BIN HANGING SYSTEMS FOR WORKSTATIONS



Rail Hanging Systems				Dimensions (In.)			AkroBins Model No.‡													19-Series Cabinets	
Model No.	Description	Wt. Cap.	Ctn. Qty.	L	W	H	30210	30220	30224	30230	30234	30235	30237	30239	30240	30250	30255	30260	30265	30270	
30008*	Rack, 1-Sided	250	1	36	14-1/8	53	96	96	64	48	48	24	40	24	24	12	16	12	16	8	6
30016*	Rack, 2-Sided	500	1	36	20	53	192	192	128	96	96	48	80	48	48	24	32	24	32	16	12
30148	Steel Rail	110	1	47-13/16	5/8	3	11	11	11	8	8	4	8	5	5	2	2	4	5	2	2
30812	Bin Cart	250	1	38-1/2	24	36-1/2	96	96	64	48	48	24	40	24	24	12	16	12	16	8	12

*Can be assembled as a 12 or 16 rail rack. †Do not exceed rail weight capacity.

Rail Systems	
30008	3AA11
30016	5YM90
30148	6GDD0
30812	5W888
30424	5W876
98400	10A166

Mobile Kit					
Model No.	Description	Wt. Cap.	Ctn. Qty.	Fits Hanging System No.	Castors
30424	Mobile Kit - Casters & Handle	500	1	30016	4" Polyolefin
98400	Suspension Straps (Set of 2) ††	-	1	30008, 30016, 30812	-

††98400 suspension straps required for hanging 19-Series Cabinets. Two straps per cabinet needed to secure cabinet to rack.



akro-mils.com

For Customer Service, samples, catalogs, item cross reference, contact Julie Moore **800-253-2467** or jumooore@akro-mils.com.

For Sales Support, contact Pete Dunlap, **513-332-7094**, or pdunlap@akro-mils.com

For shipping lead times, or to expedite orders, please work with your Field Support Team at Grainger.