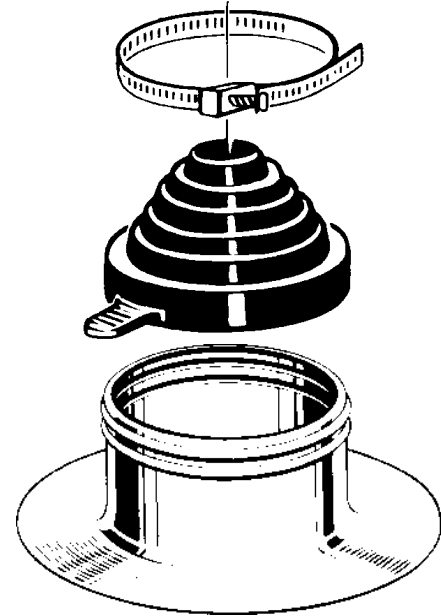




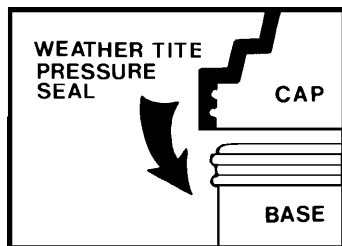
Alumi-Flash Standard with C-126 Cap

SPECIFICATION

Furnish and install the Portals Plus Standard Alumi-Flash as manufactured by Portals Plus, Inc., Bensenville, IL, at all points where one penetration 2" - 6" in diameter penetrates the roof. The Standard Alumi-Flash shall include a .060" spun aluminum base unit with a height of 4" and a base diameter of 14". The 8" collared opening shall have two beaded sealing rings roll formed into the top edge. An EPDM (Ethylene Propylene Diene Monomer) compression molded cap model C-126 shall be utilized. The Cap shall include Portals Plus' stainless steel Snaplock Clamp. Attachment and installation of the Standard Alumi-Flash shall be done in accordance with Portals Plus' instructions and the roofing membrane manufacturer's recommendations.



NOTE: All dimensions are I.D. of conical shaped nipples



MIN. MAX.

2.35" - 3.00"

3.40" - 4.20"

4.40" - 4.60"

5.50" - 5.60"

6.50" - 6.65"

