

DRAWING NO. SC210991		4	3	2	1	
CATALOG NO.	WIRE RANGE (AWG/kcmil)	L	W	H	HEX KEY	N
BIBS350-3	#10-350	3.13 [80]	2.32 [59]	2.50 [64]	5/16	3
BIBS350-4	#10-350	4.04 [103]	2.32 [59]	2.50 [64]	5/16	4
BIBS350-5	#10-350	4.95 [126]	2.32 [59]	2.50 [64]	5/16	5
BIBS350-6	#10-350	5.86 [149]	2.32 [59]	2.50 [64]	5/16	6
BIBS350-8	#10-350	7.68 [195]	2.32 [59]	2.50 [64]	5/16	8
BIBS350-10	#10-350	9.50 [241]	2.32 [59]	2.50 [64]	5/16	10
BIBS350-12	#10-350	11.32 [288]	2.32 [59]	2.50 [64]	5/16	12
BIBS350-14	#10-350	13.14 [334]	2.32 [59]	2.50 [64]	5/16	14

REV	DATE	DESCRIPTION	ECO	BY	C'H'K.
B	12/13/2012 00:00:00 AM	TORQUE INFORMATION ADDED	29767	RG	MA

D

C

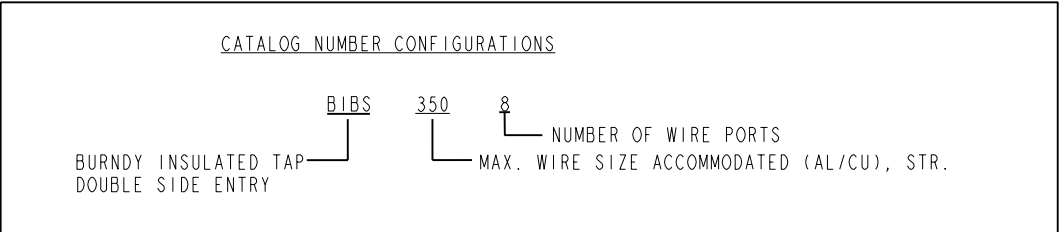
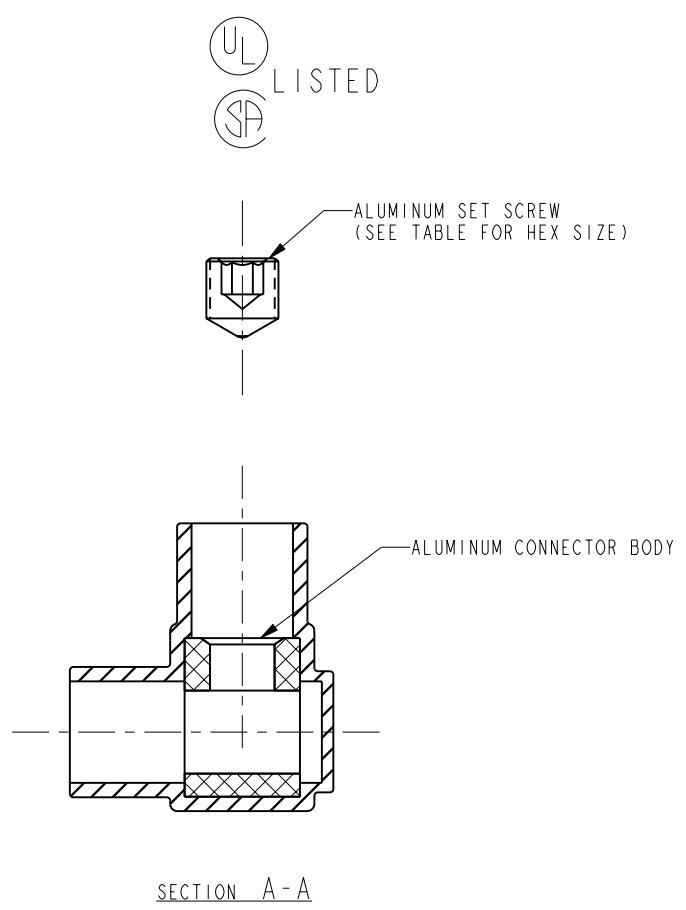
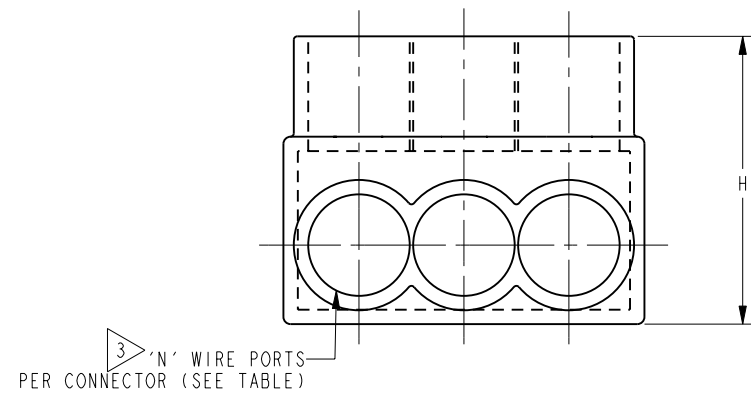
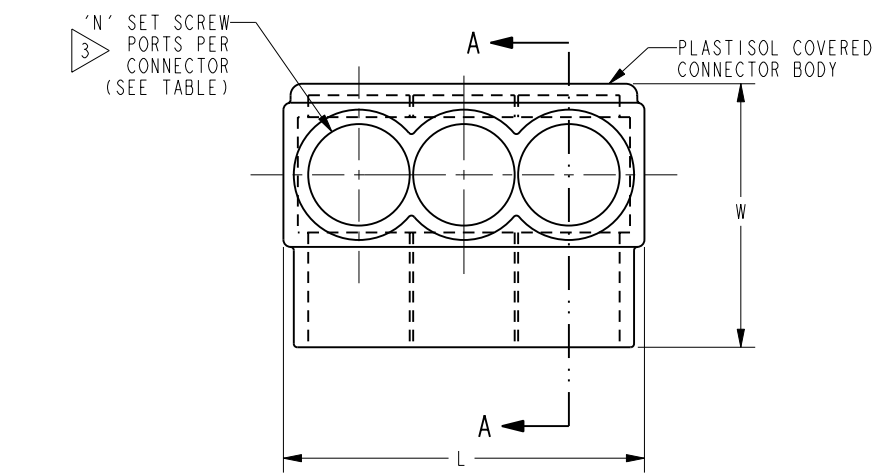
B

A

FEATURES	BENEFITS
PLASTISOL COVERED AL6061-T6 BODY	SAVES TIME, LOWERS INSTALLATION COSTS, ELIMINATES TAPING.
CLEAR PLASTISOL	ALLOWS VISUAL CONFIRMATION THAT CONDUCTOR IS PROPERLY INSERTED.
OXIDE-INHIBITOR IS PRE-INSTALLED	INHIBITS MOISTURE AND CONTAMINANTS FROM ENTERING THE CONTACT AREA
RANGE-TAKING	REDUCES THE NUMBER OF CONNECTORS CARRIED IN INVENTORY

NOTES:

- THIS DRAWING TO BE INTERPRETED PER ASME Y14.5M-1994.
- CONNECTORS ARE SUPPLIED INDIVIDUALLY LABELED. LABEL INFORMATION INCLUDES CATALOG NUMBER, QUANTITY, AND BARCODE.
- END CAPS INSTALLED ON WIRE PORTS AND SET SCREW PORTS.
- ALL CONNECTORS UL LISTED, CSA CERTIFIED FOR AL9CU, 90°C APPLICATIONS.
- DIMENSIONS IN BRACKETS [ ] ARE IN MILLIMETERS ROUNDED OFF TO THE NEAREST MILLIMETER, UNLESS OTHERWISE NOTED, AND ARE FOR REFERENCE ONLY.
- TORQUE SET SCREWS TO 275 IN/LB



TO ORDER BURNDY® PRODUCTS CALL

UNITED STATES:  
1-800-346-4175 (LONDONDERRY, NH)

CANADA:  
1-800-361-6975 (QUEBEC)  
1-800-387-6487 (ALL OTHER PROVINCES)

FOR PRODUCT INFO: <http://www.burndy.com>

UNITAP™- PLASTISOL COVERED WIRE CONNECTORS	
ITEM NO: N/A	
CAT. NO: BIBS350-, SERIES	
DRAWN BY: J AYER	3/21/97
CHECKER: C CHADBOURNE	7/21/97
DSN APPVL: C CHADBOURNE	7/21/97
MFG APPVL: --	--
QA APPVL: J BRODEUR	7/28/97
MKT APPVL: P WERTHMAN	7/24/97
PROD FAM: --	SCALE: NTS
PROJECT #: --	DRAWING NO
DOCUMENT TYPE: Sales	SC210991
REL LEVEL: Released	SHEET 13 OF 15

D

C

B

A

REV: PE0200

4

3

2

1