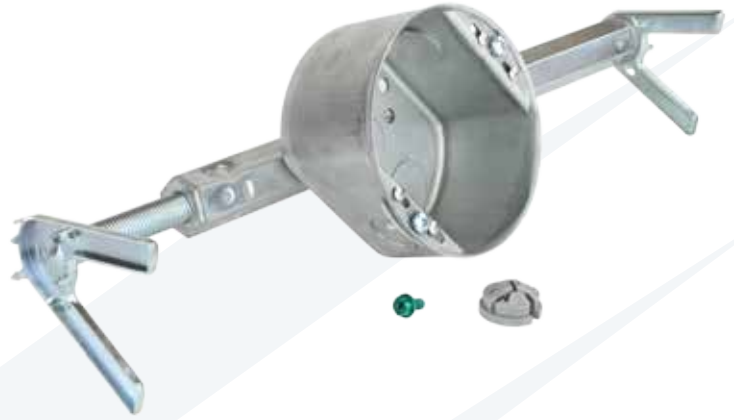


Fan Support Boxes with Brace

Old Work

Features

- Boxes – 1-1/2" - 2-1/8" deep
- Easy-to-use slide select feature for choosing #8 and #10 screw holes
- Shark bite technology for greater holding power; featuring 12 total gripping teeth
- Easy glide twin lead screw for fast installation
- Easy grip hex bar
- Maximum light fixture weight 150 lbs. on 16 in. centers, 50 lbs. on 24 in. centers
- Maximum ceiling fan weight - 70 lbs.



Applications

- 4" round fan brace can be used for remodel applications

Standard Material

- Galvanized steel



Catalog Number	UPC	Description	Knockouts		Cubic Inches	Ship Case	Weight/Case	Inches	
			Sides	Bottoms				Width	Depth
CMB150WB	87183	Fan brace 1- 1/2" box - old work	(2) - 1/2"	(3) - 1/2"	15.3	12	26	4"	1-1/2"
CMB218WB	87184	Fan brace 2-1/8" box - old work	(2) - 1/2"	(3) - 1/2"	21.5	12	28	4"	2-1/8"