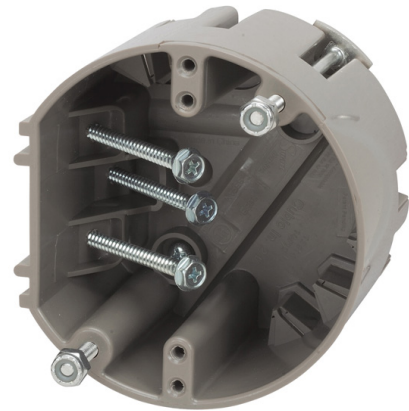


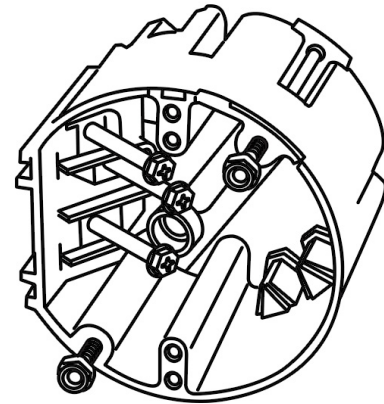


FAN & FIXTURE



FEATURES & BENEFITS

- BEST SOLUTION FOR OLD WORK AND RETROFIT APPLICATIONS
- HEAVY DUTY DESIGN FOR SUPPORT OF MOVING LOADS
- EXTRA DEEP FOR PADDLE FAN COMPONENTS
- NYLON LOCKING NUTS FOR SECURE PADDLE FAN ATTACHMENT
- FACTORY INSALLED (3)- #10 X 2" HEX HEAD SCREWS FOR SECURE
- MOUNTING



SPECIFICATIONS

Cat. Number	Trade Size	Shelf Qty.	Master Qty.	Dimension A	Dimension B	Dimension C
MSBFAN	CU: 24"	0	30	W: 4"	H: 3.75"	D: 2.75"
MSBRND	CU: 24"	0	30	W: 4"	H: 3.75"	D: 2.75"