

SeleCCTable™ LED
Retrofit Collection

HALO



5
seleCCTable™
colors

RL Recessed Downlight
RA Adjustable Gimbal

EATON

Powering Business Worldwide

HALO™ SeleCCTable Family



RL SeleCCTable Series



RL4069S1EWH
4" LED Retrofit Baffle-Trim,
600 lumen



RL56069S1EWH / RL56099S1EWH
5" / 6" LED Retrofit Baffle-Trim,
600 lumen / 900 lumen



RL4099S1EWH
4" LED Retrofit Baffle-Trim,
900 lumen



RL56129S1EWH
5" / 6" LED Retrofit Baffle-Trim,
1200 lumen

RA SeleCCTable Series



RA4069S1EWH
4" LED Adjustable Gimbal



RA56069S1EWH
5" / 6" LED Adjustable Gimbal



2700K • 3000K • 3500K
4000K • 5000K

The HALO SeleCCTable family includes the RL LED recessed downlight and RA adjustable gimbal. The SeleCCTable technology puts flexibility at your fingertips. By using the switch located on the back of the fixture, the user can choose from a range of five color temperatures 2700K - 5000K.



RL4 SeleCCTable Series

600 Lumen



900 Lumen



- 600 Series: up to 621 lumens¹
- 900 Series: up to 1006 lumens¹
- Use to replace 60W PAR16, 50W PAR20 or 40W R20 lamp
- 2700K, 3000K, 3500K, 4000K, 5000K CCT² all in one
- 90 CRI
- 600 Series: 7.6W, 120V
- 900 Series: 11.7W, 120V
- L70 @ 70,000 hrs
- HALO matte white finish
- Push-N-Twist universal installation clips pre-installed
- Compatible with most 4" recessed housings
- Dimmable to 5% with select dimmers
- Damp and wet location listed (shower rated)
- Rated for IC, ICAT and may be used in Non-IC housings
- AIR-TITE™ certified per ASTM-E283
- Diffusing, regressed lens
- Five-year limited warranty

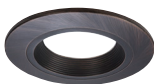
1. Lumens per selected CCT
2. CCT - Correlated Color Temperature

RL4 Designer Trims (Order Separately)



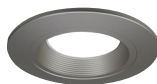
RL4TRMWHB
White Baffle (Paintable)

RL4TRMWH
White (Paintable)



RL4TRMTBZB
Tuscan Bronze Baffle

RL4TRMTBZ
Tuscan Bronze



RL4TRMSNB
Satin Nickel Baffle

RL4TRMSN
Satin Nickel

OVER \$403^Δ SAVINGS

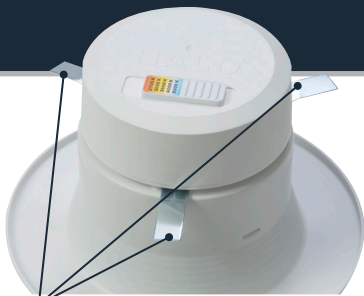
^Δ Savings are over the life of the HALO RL4 luminaire. (600 series)
Energy savings: \$315
Replacement lamp savings: \$88
Savings based on \$0.128 per kilowatt hour, average six hours use per day, 70,000 hours of lamp usage, and 60W PAR16 lamp lumen equivalent.



600 Lumen

Push-N-Twist

Universal Installation Clip



900 Lumen

Ordering Information

Sample Number: **RL4069S1EWH**

Order HALO housing separately.

RL4 – 4" LED Retrofit Baffle - Trim

RL4069S1EWH= 600 lumen, 90 CRI, 2700K - 5000K CCT

RL4099S1EWH= 900 lumen, 90 CRI, 2700K - 5000K CCT

LED Housings (Order Separately)

See Housing Compatibility section

Accessories (Order Separately)

Baffle

RL4TRMSNB=Satin Nickel Trim Ring

RL4TRMTBZB=Tuscan Bronze Trim Ring

RL4TRMWHB=White Paintable Trim Ring

Splay

RL4TRMSN=Satin Nickel Trim Ring

RL4TRMTBZ=Tuscan Bronze Trim Ring

RL4TRMWH=White Paintable Trim Ring



HE26LED

Edison Base Adapter
for retrofit (included)

HE26LED=Replacement screw base adapter (one included with unit)

RL4 Energy Data	600 Series	900 Series
Max. Lumens	621 @ 4000K	1006 @ 5000K
Input Voltage	120V	120V
Input Frequency	50/60 Hz	50/60 Hz
Input Power	7.6W	11.7W
Input Current	0.075A - 0.0875A (Per input power)	0.075A - 0.0875A (Per input power)
Power Factor	>0.90	>0.90
THD	<20%	<20%
EMI/RFI	FCC Title 47 CFR, Part 15, FCC Title 47 CFR, Part 15, Class B (Consumer) Class B (Consumer)	
Sound Rating	Class A	Class A
Minimum Starting Temp	-30°C (-22°F)	-30°C (-22°F)



Refer to ENERGY STAR® Certified Products List.

Can be used to comply with California Title 24 High Efficacy requirements. Certified California Title 20 Appliance Efficiency Database.



RL56 SeleCCTable Series

**600 Lumen
900 Lumen**



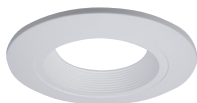
1200 Lumen



- 600 Series: up to 712 lumens¹
900 Series: up to 1006 lumens¹
1200 Series: up to 1272 lumens¹
- 600 Series: use to replace 65W BR30 or 50W PAR30 lamp
900 Series: use to replace 75W PAR30 lamp
1200 Series: use to replace 90W BR40 lamp
- 2700K, 3000K, 3500K, 4000K, 5000K CCT² all in one
- 90 CRI
- 600 Series: 7.6W, 120V
900 Series: 12.1W, 120V
1200 Series: 14W, 120V
- L70 @ 70,000 hrs
- HALO matte white finish
- Torsion springs pre-installed
- Optional Push-N-Twist universal installation two piece clips
- Compatible with most 5" and 6" standard and shallow recessed housings
- Dimmable to 5% with select dimmers
- Damp and wet location listed (shower rated)
- Rated for IC, ICAT and may be used in Non-IC housings
- AIR-TITE™ certified per ASTM-E283
- Diffusing, regressed lens
- Five-year limited warranty

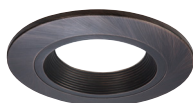
1. Lumens per selected CCT
2. CCT - Correlated Color Temperature

RL56 Designer Trims (Order Separately)



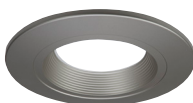
RL56TRMWHB
White Baffle (Paintable)

RL56TRMWH
White (Paintable)



RL56TRMTBZB
Tuscan Bronze Baffle

RL56TRMTBZ
Tuscan Bronze



RL56TRMSNB
Satin Nickel Baffle

RL56TRMSN
Satin Nickel

**OVER \$409^Δ
SAVINGS**

^Δ Savings are over the life of the HALO RL56 600 Lumen luminaire.
Energy savings: \$348
Replacement lamp savings: \$61
Savings based on \$0.128 per kilowatt hour, average six hours use per day, 70,000 hours of lamp usage, and 65W BR30 lamp lumen equivalent.

Torsion Springs



Example:
RL56-600 Series



5 Inch housing position



6 Inch housing position

Push-N-Twist
Universal Installation Clip



Example:
RL56-600 Series



To use the Push-N-Twist clips, the torsion springs must be removed. Do not remove the main bracket.



Once the torsion springs are removed, install the friction clips and make sure to rotate the clips into position before installing into the housing.

RL56 SeleCCTable Series

Ordering Information

Sample Number: **RL56069S1EWH**

Order HALO housing separately.

RL56 – 5"/6" LED Retrofit Baffle - Trim

RL56069S1EWH= 600 lumen 90 CRI, 2700K - 5000K CCT

RL56099S1EWH= 900 lumen 90 CRI, 2700K - 5000K CCT

RL56129S1EWH= 1200 lumen 90 CRI, 2700K - 5000K CCT

LED Housings (Order Separately)

See Housing Compatibility section

Accessories (Order Separately)

Baffle

RL56TRMSNB=Satin Nickel Trim Ring

RL56TRMTBZB=Tuscan Bronze Trim Ring

RL56TRMWHB=White Paintable Trim Ring

Splay

RL56TRMSN=Satin Nickel Trim Ring

RL56TRMTBZ=Tuscan Bronze Trim Ring

RL56TRMWH=White Paintable Trim Ring

OT400P=Oversize Flat White Metal Trim Ring, 6" I.D. x 9-1/4" O.D.

(Ring slips behind RL56 ring in stepped configuration.)

OT403P=Oversize White Plastic Trim Ring, 6" I.D. x 8" O.D.

(Ring slips behind RL56 ring in stepped configuration.)

TRM690WH=Oversize Matte White Metal Trim Ring. Designed for RL56 ring to inset into oversize ring for an even (non-stepped) trim surface.

HE26LED=Replacement screw base adapter (one included with unit)



HE26LED

Edison Base Adapter for retrofit (included)

RL56 Energy Data	600 Series	900 Series	1200 Series
Max. Lumens	712 @ 4000K	1006 @ 4000K	1272 @ 5000K
Input Voltage	120V	120V	120V
Input Frequency	50/60 Hz	50/60 Hz	50/60 Hz
Input Power	7.6W	12.1W	14W
Input Current	0.15 A	0.15 A	0.15 A
Power Factor	>0.90	>0.90	>0.90
THD	<20%	<20%	<20%
EMI/RFI	FCC Title 47 CFR, Part 15, Class B (Consumer)	FCC Title 47 CFR, Part 15, Class B (Consumer)	FCC Title 47 CFR, Part 15, Class B (Consumer)
Sound Rating	Class A	Class A	Class A
Minimum Starting Temp	-30°C (-22°F)	-30°C (-22°F)	-30°C (-22°F)



Refer to ENERGY STAR® Certified Products List.

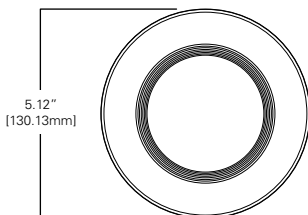
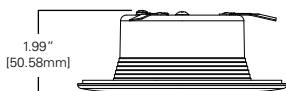
Can be used to comply with California Title 24 High Efficacy requirements. Certified to California Title 20 Appliance Efficiency Database.



RL4 / RL56 SeleCCTable Series

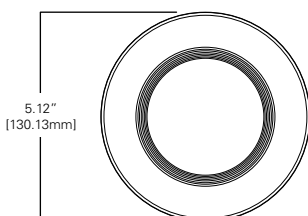
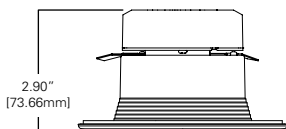
RL4

600 Lumen



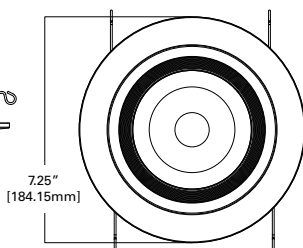
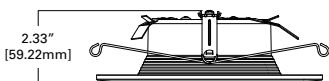
RL4

900 Lumen



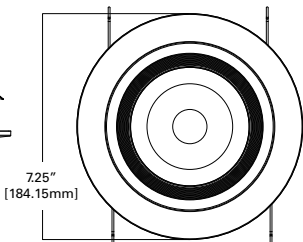
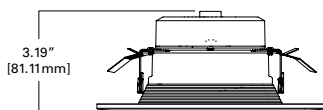
RL56

600 Lumen / 900 Lumen



RL56

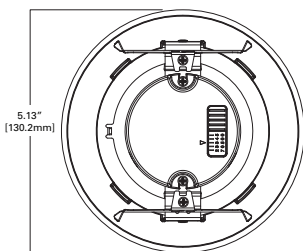
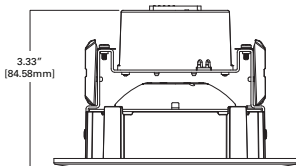
1200 Lumen



RA4 SeleCCTable Series



- Adjustable Gimbal for accent, task, grazing and downlighting
- 35° Tilt, up to 360° rotation
- 615 lumens @ 3000K
- Use to replace 40W R40 lamp or 60W PAR16 lamp
- 2700K, 3000K, 3500K, 4000K, 5000K CCT all in one
- 90 CRI
- 600 Series: 7.8W, 120V
- L70 @ 70,000 hrs
- HALO matte white finish
- Compatible with most 4" recessed housings
- Flexible mounting with friction blades
- Dimmable to 5% with select dimmers
- Damp location listed
- Rated for IC, ICAT and may be used in Non-IC housings
- Five-year limited warranty



UP TO **\$596^A**
SAVINGS

^A Savings are over the life of the HALO RA4 600 Lumen luminaire.

Energy savings: \$520

Replacement lamp savings: \$77

Savings based on \$0.128 per kilowatt hour, average six hours use per day, 70,000 hours of lamp usage, and 60W PAR16 lamp lumen equivalent.

Friction Blades



Ordering Information

Sample Number: **RL4069S1EWH**
 Order HALO housing separately.

RA4 – 4" LED Adjustable Gimbal

RA4069S1EWH= 600 lumen, 90 CRI, 2700K - 5000K CCT

LED Housings (Order Separately)

See Housing Compatibility section

Accessories (Order Separately)

HE26LED=Replacement screw base adapter
 (one included with unit)



HE26LED
 Edison Base Adapter
 for retrofit (included)

RA4 Energy Data	600 Series @ 3000K
Max. Lumens	615 @ 3000K
Input Voltage	120V
Input Frequency	50/60 Hz
Input Power	7.0W
Input Current	0.065A
Power Factor	>0.90
THD	<20%
EMI/RFI	FCC Title 47 CFR, Part 15, Class B (Consumer)
Sound Rating	Class A
Minimum Starting Temp	-30°C (-22°F)



Refer to ENERGY STAR® Certified Products List.

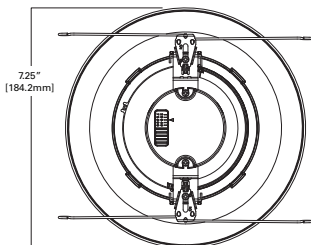
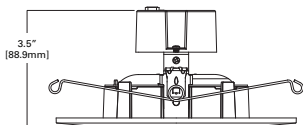
Can be used to comply with California Title 24 High Efficacy requirements. Certified to California Title 20 Appliance Efficiency Database.



RA56 SeleCCTable Series



- Adjustable Gimbal for accent, task, grazing and downlighting
- 35° Tilt, up to 360° rotation
- 630 lumens @ 3000K
- Use to replace 65W BR30 lamp
- 2700K, 3000K, 3500K, 4000K, 5000K CCT all in one
- 90 CRI
- 600 Series: 7.0W, 120V
- L70 @ 70,000 hrs
- HALO matte white finish
- Compatible with most 5" and 6" recessed housings
- Flexible mounting with friction blades and torsion springs
- Dimmable to 5% with select dimmers
- Damp location listed
- Rated for IC, ICAT and may be used in Non-IC housings
- Five-year limited warranty



UP TO **\$604^A**
SAVINGS

^A Savings are over the life of the HALO RA56 600 Lumen luminaire.

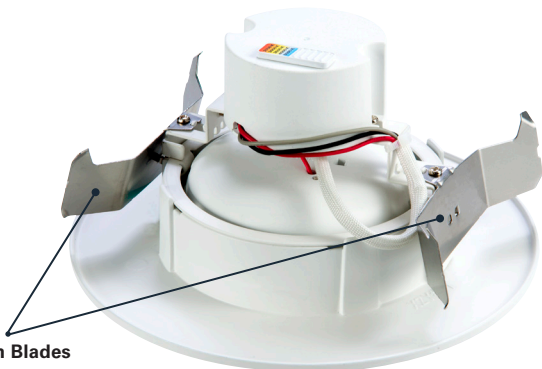
Energy savings: \$520

Replacement lamp savings: \$84

Savings based on \$0.128 per kilowatt hour, average six hours use per day, 70,000 hours of lamp usage, and 65W BR30 lamp lumen equivalent.



Torsion Springs



Friction Blades

Ordering Information

Sample Number: **RL4069S1EWH**

Order HALO housing separately.

RA56 – 5"/6" LED Adjustable Gimbal

RA56069S1EWH= 600 lumen, 90 CRI, 2700K - 5000K CCT

LED Housings (Order Separately)

See Housing Compatibility section

Accessories (Order Separately)

HE26LED=Replacement screw base adapter
(one included with unit)



HE26LED
Edison Base Adapter
for retrofit (included)

RA56 Energy Data

600 Series

Max. Lumens	630 @ 3000K
Input Voltage	120V
Input Frequency	50/60 Hz
Input Power	7.0W
Input Current	0.065A
Power Factor	>0.90
THD	<20%
EMI/RFI	FCC Title 47 CFR, Part 15, Class B (Consumer)
Sound Rating	Class A
Minimum Starting Temp	-30°C (-22°F)



Refer to ENERGY STAR® Certified Products List.

Can be used to comply with California Title 24 High Efficacy requirements. Certified to California Title 20 Appliance Efficiency Database.



RL4/RA4 Housing Compatibility

RL4/RA4 SeleCCTable LED are rated for installation in 4" HALO and other housings.

HALO LED¹ H995ICAT, H995RICAT, H245ICAT, H245RICAT

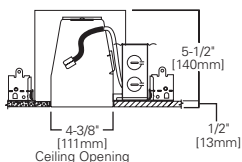
HALO H99ICAT, H99RTAT, H99TAT, E4ICATSB, E4TATSB, E4RTATSB

Other Brands The RL and RA SeleCCTable Series is UL Certified for use with any 4" diameter recessed housing constructed of steel or aluminum with an internal volume that exceeds 62.3 in³ in addition to those noted above.

1 HALO LED housings are non-screw base, high-efficacy code compliant.

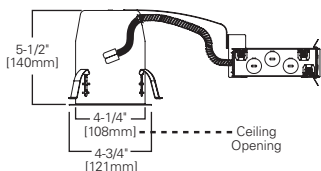
H995ICAT

4" LED, IC, AIR-TITE,
New Construction Housing



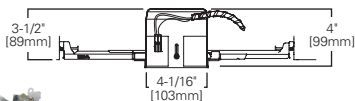
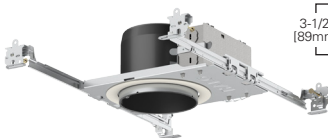
H995RICAT

4" LED, IC, AIR-TITE,
Remodel Housing



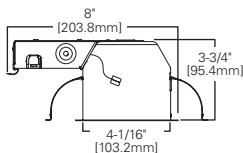
H245ICAT

4" LED, Ultra-shallow, IC, AIR-TITE, New Construction Housing



H245RICAT

4" LED, Ultra-shallow, IC, AIR-TITE, Remodel Housing



RL56/RA56 Housing Compatibility

RL56/RA56 SeleCCTable LED are rated for installation in 5" and 6" HALO and other housings.

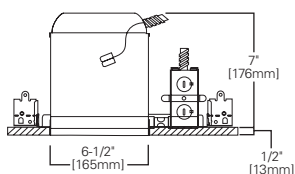
HALO 5" LED¹	H550ICAT, H550RICAT, E550ICAT, E550RICAT
HALO 6" LED¹	H750ICAT, H750RICAT, H750T, H750TCP, H2750ICAT, H2750RICAT, E750ICAT, E750RICAT
HALO 5"	H5ICAT, H5RICAT, H5ICATNB, H5T, H5RT, H25ICAT, H25ICATNB, E5TAT, E5RTAT, H5TNB, E5TATNB, E5ICAT, E5RICAT, E5ICATNB
HALO 6"	H7ICAT, H7RICAT, H7ICT, H7RICT, H7ICATNB, H7ICTNB, H7T, H7RT, H7TNB, H7TCP, H7UICT, H7UICAT, H27ICAT, H27RICAT, H27T, H27RT, E7ICAT, E7RICAT, E27ICAT, E27RICAT, E7ICATNB, E7TAT, E7RTAT, E7TATNB, E27TAT, E27RTAT
HALO LED Retrofit	ML7BXRFK, ML7E26RFK
Other Brands*	The RL SeleCCTable Series is UL Certified for use with any 5"/6" diameter recessed housing constructed of steel or aluminum with an internal volume that exceeds 107.9 in ³ in addition to those noted above.

*When using RL56/RA56 torsion springs for retrofit some housings will not have torsion spring receiver brackets –use HALO ML7RAB retrofit adapter band (order separately)

1 HALO LED housings are non-screw base, high-efficacy code compliant.

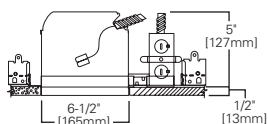
H750ICAT

6" LED, IC, AIR-TITE, Standard New Construction Housing



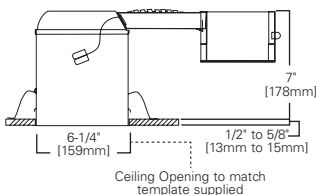
H2750ICAT

6" LED, IC, AIR-TITE, Shallow New Construction Housing



H750RICAT

6" LED, IC, AIR-TITE, Standard Remodel Housing



Product and Photometric Data

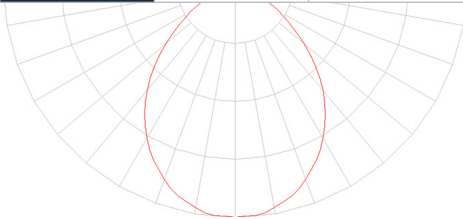


RL4069S1EWH

RL4 SeleCCTable - 600 Series

Cat No.	CRI	CCT	Lumens	Power (W)	LPW
RL4069S1EWH	91	2700K	549	7.6	72.3
	91	3000K	580	7.6	76.3
	94	3500K	610	7.6	80.3
	94	4000K	621	7.6	81.7
	92	5000K	598	7.6	78.6

RL4069S1EWH-3000K		
Luminaire lumens		575
Input watts		7.6
LER (LPW)		75.7
Spacing Criteria	0-180	1.18
	90-270	1.18
	Diagonal	1.26
Beam angle (degrees)		93.1
Field angle (degrees)		141.1
Zonal lumen	Lumens	% Lumens
0-30	203	35.3
0-40	322	56
0-60	511	88.8
0-90	575	100



* Tested in accordance with IES LM63. Field results may vary.

Color Metric Summary

TM-30-15	R _f = 91.1
	R _g = 100.9
CRI/CIE	R _a = 93.1
	R ₉ = 64.9



CCT - Range of 2700K- 5000K



*Additional photometric ies files available online.

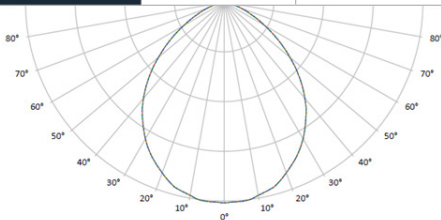
RL4099S1EWH

RL4 SeleCCTable - 900 Series



Cat No.	CRI	CCT	Lumens	Power (W)	LPW
RL4099S1EWH	92	2700K	891	11.7	76.2
	93	3000K	915	11.7	78.2
	94	3500K	951	11.7	81.2
	94	4000K	976	11.7	83.4
	91	5000K	1006	11.7	86.0

RL4099S1EWH-3000K		
Luminaire lumens		915
Input watts		11.7
LER (LPW)		78.2
Spacing Criteria	0-180	1.17
	90-270	1.17
	Diagonal	1.25
Beam angle (degrees)		93.1
Field angle (degrees)		141.1
Zonal lumen	Lumens	% Lumens
0-30	323	35.3
0-40	512	56
0-60	813	88.8
0-90	915	100



* Tested in accordance with IES LM63. Field results may vary.

Color Metric Summary

TM-30-15	R _f = 91.1
	R _g = 100.9
CRI/CIE	R _a = 93.1
	R ₉ = 64.9



CCT - Range of 2700K- 5000K



*Additional photometric ies files available online.

Product and Photometric Data

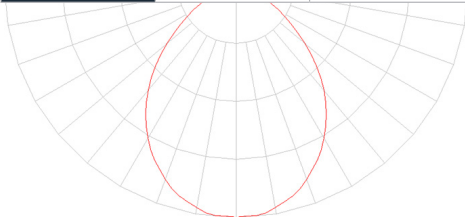
RL56069S1EWH

RL56 SeleCCTable - 600 Series



Cat No.	CRI	CCT	Lumens	Power (W)	LPW
RL56069S1EWH	92	2700K	630	7.6	82.9
	92	3000K	665	7.6	87.5
	94	3500K	700	7.6	92.1
	94	4000K	712	7.6	93.6
	92	5000K	685	7.6	90.2

RL56069S1EWH-3000K		
Luminaire lumens		665
Input watts		7.6
LER (LPW)		87.5
Spacing Criteria	0-180	1.14
	90-270	1.14
	Diagonal	1.22
Beam angle (degrees)		87.8
Field angle (degrees)		139
Zonal lumen	Lumens	% Lumens
0-30	247	37.2
0-40	387	58.2
0-60	595	89.4
0-90	665	100



* Tested in accordance with IES LM63. Field results may vary.

Color Metric Summary

TM-30-15	R _f = 89.8
	R _g = 98
CRI/CIE	R _a = 93.7
	R ₉ = 69.1



CCT - Range of 2700K- 5000K



*Additional photometric ies files available online.

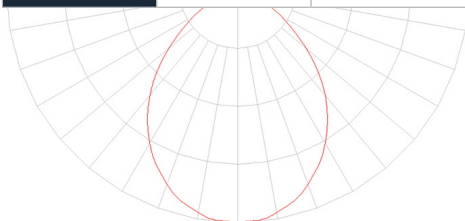
RL56099S1EWH

RL56 SeleCCTable - 900 Series



Cat No.	CRI	CCT	Lumens	Power (W)	LPW
RL56099S1EWH	90	2700K	890	12.1	73.6
	90	3000K	940	12.1	77.7
	93	3500K	989	12.1	81.7
	93	4000K	1006	12.1	83.1
	91	5000K	969	12.1	80

RL56099S1EWH-3000K		
Luminaire lumens		940
Input watts		12.1
LER (LPW)		77.7
Spacing Criteria	0-180	1.16
	90-270	1.16
	Diagonal	1.22
Beam angle (degrees)		88.9
Field angle (degrees)		140
Zonal lumen	Lumens	% Lumens
0-30	345	36.7
0-40	541	57.5
0-60	838	89.1
0-90	940	100



* Tested in accordance with IES LM63. Field results may vary.

Color Metric Summary

TM-30-15	R _f = 89.9
	R _g = 97.7
CRI/CIE	R _a = 93.1
	R ₉ = 64.6



CCT - Range of 2700K- 5000K



*Additional photometric ies files available online.

Product and Photometric Data

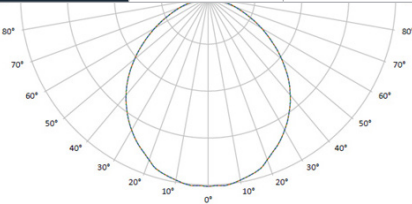
RL56129S1EWH

RL56 SeleCCTable - 1200 Series



Cat No.	CRI	CCT	Lumens	Power (W)	LPW
RL56099S1EWH	91	2700K	1205	14	86.1
	93	3000K	1221	14	87.2
	94	3500K	1227	14	87.6
	95	4000K	1249	14	89.2
	93	5000K	1272	14	90.8

RL56129S1EWH-3000K		
Luminaire lumens		1221
Input watts		14
LER (LPW)		87.2
Spacing Criteria	0-180	1.21
	90-270	1.21
	Diagonal	1.31
Beam angle (degrees)		93
Field angle (degrees)		140
Zonal lumen	Lumens	% Lumens
0-30	345	31.7
0-40	541	51.5
0-60	838	85.5
0-90	940	100



* Tested in accordance with IES LM63. Field results may vary.

Color Metric Summary

TM-30-15	R _f = 89.9
	R _g = 97.7
CRI/CIE	R _a = 93.1
	R ₉ = 64.6



CCT - Range of 2700K- 5000K



* Additional photometric ies files available online.

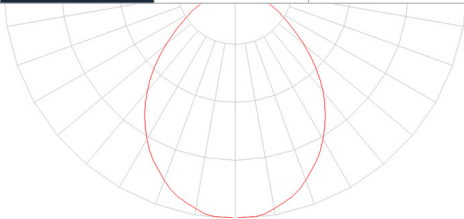
RA4069S1EWH

RA4 SeleCCTable - 600 Series



Cat No.	CRI	CCT	Lumens	Power (W)	LPW
RA4069S1EWH	91	2700K	549	7.6	72.3
	91	3000K	580	7.6	76.3
	94	3500K	610	7.6	80.3
	94	4000K	621	7.6	81.7
	92	5000K	598	7.6	78.6

RA4069S1EWHR-3000K		
Luminaire lumens		575
Input watts		7.6
LER (LPW)		75.7
Spacing Criteria	0-180	1.18
	90-270	1.18
	Diagonal	1.26
Beam angle (degrees)		93.1
Field angle (degrees)		141.1
Zonal lumen	Lumens	% Lumens
0-30	203	35.3
0-40	322	56
0-60	511	88.8
0-90	575	100



* Tested in accordance with IES LM63. Field results may vary.

Color Metric Summary

TM-30-15	R _f = 90
	R _g = 98
CRI/CIE	R _a = 95
	R ₉ = 77



CCT - Range of 2700K - 5000K



*Additional photometric ies files available online.

Product and Photometric Data

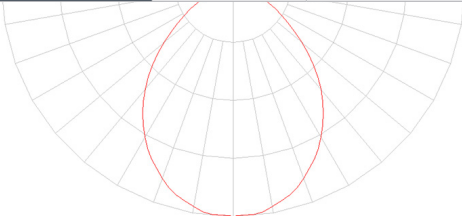


R564069S1EWH

RA56 SeleCCTable - 600 Series

Cat No.	CRI	CCT	Lumens	Power (W)	LPW
RA56069S1EWH	92	2700K	630	7.6	82.9
	92	3000K	665	7.6	87.5
	94	3500K	700	7.6	92.1
	94	4000K	712	7.6	93.6
	92	5000K	685	7.6	90.2

RA56069S1EWH-3000K		
Luminaire lumens		665
Input watts		7.6
LER (LPW)		87.5
Spacing Criteria	0-180	1.14
	90-270	1.14
	Diagonal	1.22
Beam angle (degrees)		87.8
Field angle (degrees)		139
Zonal lumen	Lumens	% Lumens
0-30	247	37.2
0-40	387	58.2
0-60	595	89.4
0-90	665	100



* Tested in accordance with IES LM63. Field results may vary.

Color Metric Summary

TM-30-15	R _f = 90
	R _g = 98
CRI/CIE	R _a = 95
	R ₉ = 77



CCT - Range of 2700K- 5000K



- Downlight distribution
- Maximum spacing criteria
- Optimized design for general downlighting
- Exceeds 86% of light between 0-60° cone-of-light zone
- ENERGY STAR® and California Title 24 - zonal and efficacy requirements

Lighting Control Solution

Eaton dimmers offer versatile options to set the mood and reduce energy consumption. These compatible LED dimmers are ideal for both residential and light commercial applications and are compatible with decorator (screw-less) style devices and wallplates. Refer to www.eaton.com for additional information.



Decorator
WBSD-DEC-*



Slide
WBSD-SLD-*



Toggle
WBSD-TOG-*



Smart
WBSD-SMT-*



Eaton

1121 Highway 74 South
Peachtree City, GA 30269
P: 770-486-4800
www.eaton.com/lighting

Canada Sales
5925 McLaughlin Road
Mississauga, Ontario L5R 1B8
P: 905-501-3000
F: 905-501-3172

Our Lighting Product Lines

Ametrix
AtLite
Corelite
Ephesus
Fail-Safe
HALO
HALO Commercial
Invue
io
IRiS
Lumark
Lumière
McGraw-Edison
Metalux
MWS
Neo-Ray
Portfolio
RSA
Shaper
Streetworks
Sure-Lites

Our Controls Product Lines

Fifth Light Technology
Greengate
iLight (International Only)
iLumin
Zero 88

Connected Lighting Systems

Distributed Low-Voltage Power
HALO Home
iLumen Plus
LumaWatt Pro
WaveLinx

Eaton

1121 Highway 74 South
Peachtree City, GA 30269
P: 770-486-4800
www.eaton.com/lighting

© 2018 Eaton
All Rights Reserved
Printed in USA
Publication No. BR518046EN
August 2018

Products, specifications and
compliances are subject to
change without notice.

Eaton is a registered trademark.

All other trademarks are property
of their respective owners.



Powering Business Worldwide