

Product data sheet

Characteristics

HOM3060L225PGC

Load center, Homeline, 1 phase, 30 spaces, 60 circuits, 225A convertible main lugs, PoN, NEMA1, grd bar, combo cover



Main

Product Type	Load Center
Marketing Trade Name	Homeline
Load Center Type	Main lugs
Rated Current	225 A
Number of Spaces	30
Number of Circuits	60
Enclosure Rating	NEMA 1 indoor
Cover Type	Combination flush/surface cover
Electrical Connection	Lugs
Included Options	Grounding bar 1)

Complementary

Short Circuit Current Rating	10 kA
Number of Tandem Breakers	30
Number of Phases	1 phase
Rated Operational Voltage	120/240 V AC
Wire Size	AWG 4...250 kcmil copper AWG 4...300 kcmil aluminium
Wiring Configuration	3-wire
Cover Finish	Gray baked enamel
Busbar Material	Tin plated aluminium busbar
Enclosure Material	Welded sheet steel
Surface Finish	Baked enamel Gray
Box Number	10
Height	33.78 in (858 mm)
Width	14.25 in (362 mm)
Depth	3.74 in (95 mm)

Environment

Ambiant Air Temperature for Operation	23 °F (-5 °C) 104 °F (40 °C)
Product Certifications	UL E-6294

Ordering and shipping details

Category	00045 - HOM LC&CVR,12-42 CKT,NEMA1
Discount Schedule	DE3C
GTIN	00785901977223
Nbr. of units in pkg.	1
Package weight(Lbs)	30.01 lb(US) (13.61 kg)
Returnability	Yes
Country of origin	US

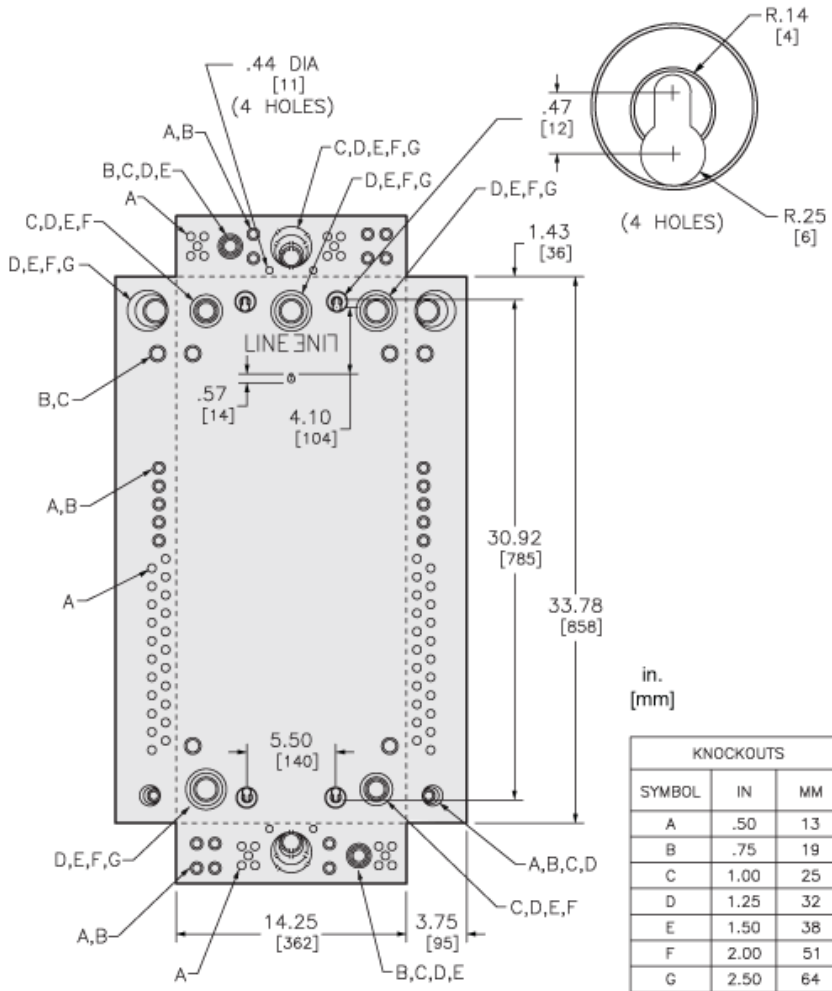
Packing Units

Package 1 Height	5.80 in (14.732 cm)
Package 1 width	16.30 in (41.402 cm)
Package 1 Length	36.50 in (92.710 cm)

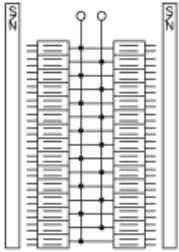
Offer Sustainability

Sustainable offer status	Green Premium product
REACH Regulation	REACH Declaration
REACH free of SVHC	Yes
EU RoHS Directive	Compliant EU RoHS Declaration
Toxic heavy metal free	Yes
Mercury free	Yes
RoHS exemption information	Yes
China RoHS Regulation	China RoHS Declaration
Environmental Disclosure	Product Environmental Profile

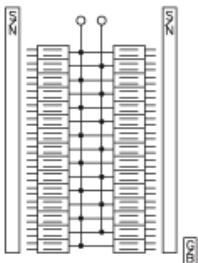
Approximate Dimensions



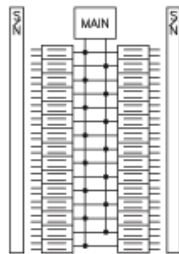
Connections and Wiring Diagrams



HOM3060L125PC
HOM3060L225PC



HOM3060L225PGC



HOM3060M100PC
HOM3060M125PC
HOM3060M150PC
HOM3060M200PC