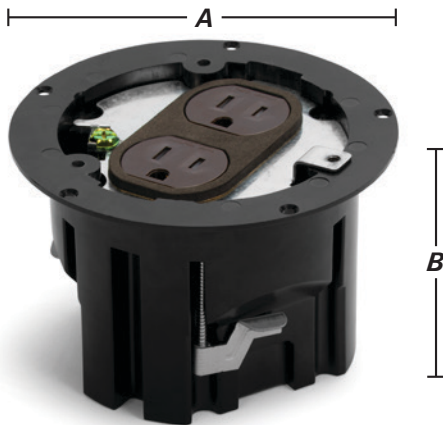


Plastic Boxes and Covers NEW

CATALOG #	DESCRIPTION	DIMENSIONS		INTERIOR CAPACITY
		A	B	
PBR-1	Round plastic box with 15 AMP (TR) duplex receptacle included	4 3/8"	3 1/8"	20 Cu. In.
PBR-FPA	Aluminum flip cover for PBR-1	Diameter: 5 1/16"		
PBR-FPB	Brass flip cover for PBR-1	Diameter: 5 1/16"		
PBR-SPA	Aluminum screw cover for PBR-1	Diameter: 5 1/16"		
PBR-SPB	Brass screw cover for PBR-1	Diameter: 5 1/16"		
PBR1-FPA	Round plastic box kit with PBR-FPA cover & 15 AMP (TR) receptacle	5 1/16"	3 1/4"	20 Cu. In.
PBR1-FPB	Round plastic box kit with PBR-FPB cover & 15 AMP (TR) receptacle	5 1/16"	3 1/4"	20 Cu. In.
PBR1-SPA	Round plastic box kit with PBR-SPA cover & 15 AMP (TR) receptacle	5 1/16"	3 1/4"	20 Cu. In.
PBR1-SPB	Round plastic box kit with PBR-SPB cover & 15 AMP (TR) receptacle	5 1/16"	3 1/4"	20 Cu. In.

>>>> For Replacement Plugs, see page 38

PBR-1



FEATURES & BENEFITS

- Lightweight** polymer construction
- Options include **choice of covers** (aluminum or brass) and (flip lid or screw plug style)
- Economical savings** over cast iron & stamped metal floor box assemblies
- Ease of installation**
- Adjustable wing clamps** for added installation support

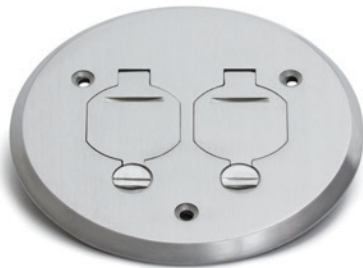
Install in finished floors only



Intertek
4004534

- Conforms to UL514C**
- ETL listing #4004534**

PBR-FPA



PBR-FPB



PBR-SPA



PBR-SPB



PBR1-FPA



PBR1-FPB



PBR1-SPA



PBR1-SPB

