



### Main

Product	Energy Efficient Transformer
Enclosure Code	17H
Enclosure Type	NEMA 2
Insulation Temperature	428 °F (220 °C)
Phase	1 phase
Primary Voltage	240 x 480 V
Power Rating	25 kVA
Secondary Voltage	120/240 V
Full Capacity Taps	6 2.5 % 2+ 4-
Temperature Rise	150 °C
Winding Material	Aluminium

### Complementary

Maximum Height	37 in (939.80 mm)
Maximum Width	20 in (508.00 mm)
Maximum Depth	16 in (406.40 mm)
Net Weight	285.00 lb(US) (129.274 kg)

### Ordering and shipping details

Category	16284 - 1 PH EE/TP1 LVGP XFMR
Discount Schedule	PE2E
GTIN	00785901558934
Nbr. of units in pkg.	1
Package weight(Lbs)	302 lb(US) (136.98 kg)
Returnability	Yes
Country of origin	MX

### Packing Units

Package 1 Height	3.58 ft (1.092 m)
Package 1 width	1.82 ft (0.554 m)
Package 1 Length	1.48 ft (0.450 m)

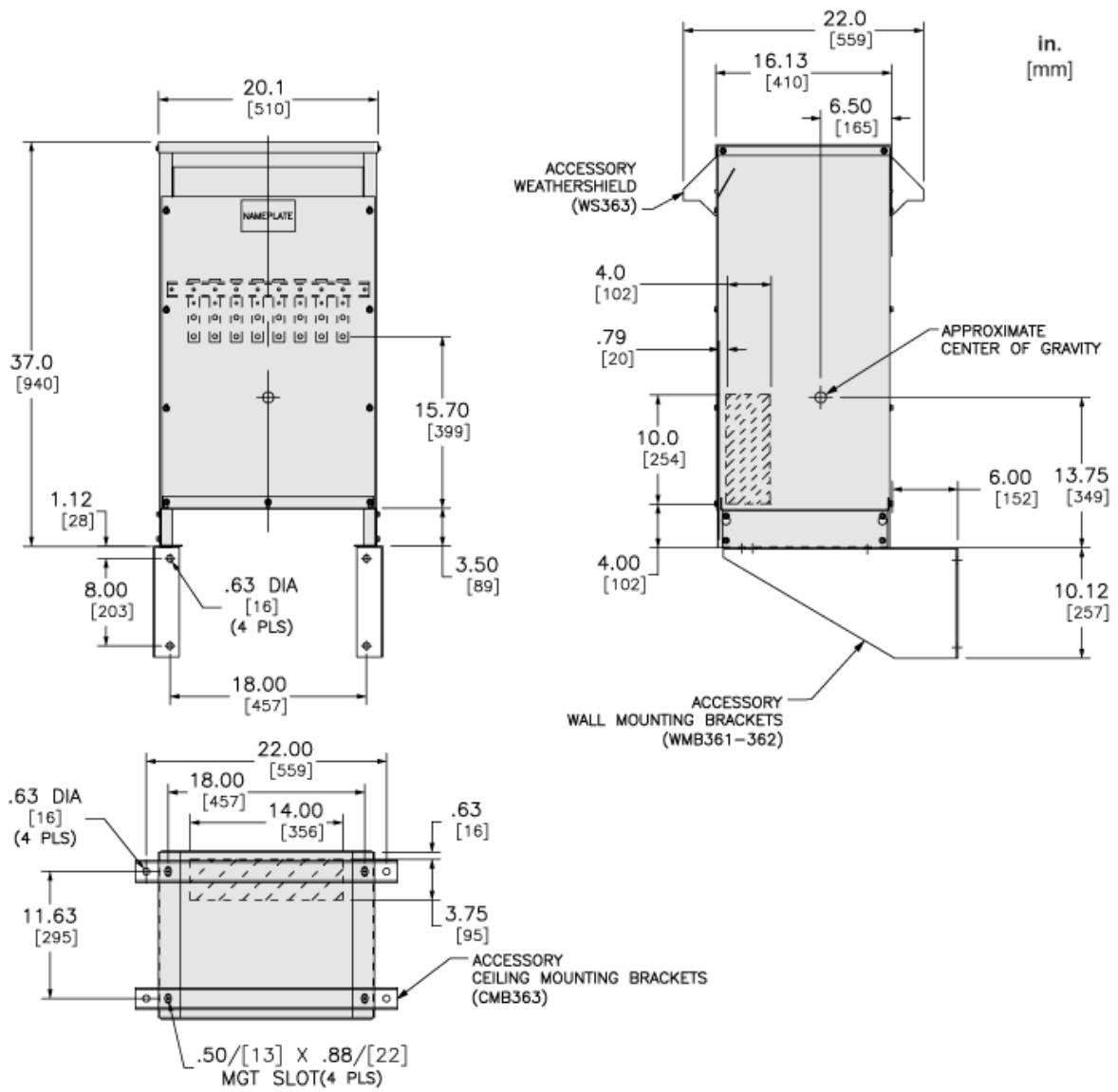
### Offer Sustainability

Sustainable offer status	Green Premium product
REACH free of SVHC	Yes
EU RoHS Directive	Compliant <a href="#">EU RoHS Declaration</a>
Toxic heavy metal free	Yes
Mercury free	Yes
RoHS exemption information	<a href="#">Yes</a>
China RoHS Regulation	<a href="#">China RoHS Declaration</a>
Environmental Disclosure	<a href="#">Product Environmental Profile</a>

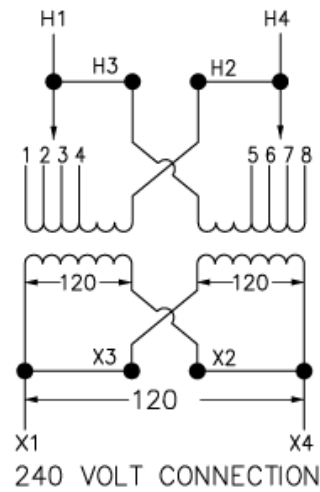
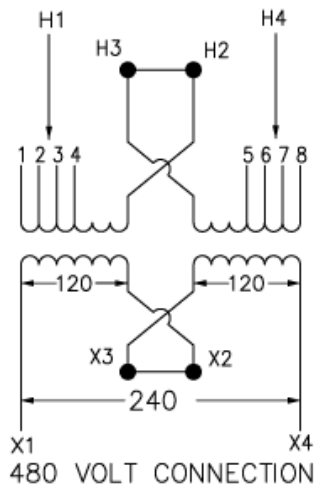
### Contractual warranty

Warranty	18 months
----------	-----------

Approximate Dimensions



Connections and Wiring Diagrams



480 VOLT CONNECTION CONNECT H2 TO H3 CONNECT LINES TO H1 & H4	
PRIMARY VOLTS	CONNECT TO TAPS
504	1 AND 8
492	1 AND 7
480	2 AND 7
468	2 AND 6
456	3 AND 6
444	3 AND 5
432	4 AND 5

240 VOLT CONNECTION CONNECT H1 TO H3, H2 TO H4 CONNECT LINES TO H1 & H4	
PRIMARY VOLTS	CONNECT TO TAPS
252	1 AND 8
240	2 AND 7
228	3 AND 6
216	4 AND 5