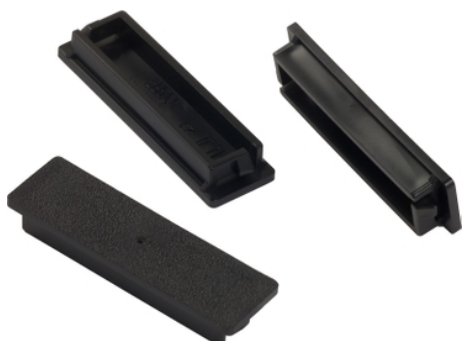


Product data sheet

Characteristics

QOFP

Load center accessory, QO/Homeline, cover filler plate, fills branch circuit opening



Main

Product line	QO
Product type	Load Center Filler Plate

Complementary

Maximum Height	3.06 in (77.72 mm)
Maximum Width	1.9 in (48.26 mm)
Maximum Depth	1.21 in (30.73 mm)

Ordering and shipping details

Category	00102 - QO LC ACCESSORIES
Discount Schedule	DE3A
GTIN	00785901478416
Nbr. of units in pkg.	5
Package weight(Lbs)	0.05 lb(US) (0.02 kg)
Returnability	Yes
Country of origin	US

Packing Units

Unit Type of Package 1	PCE
Package 1 Height	0.40 in (1.016 cm)
Package 1 width	0.80 in (2.032 cm)
Package 1 Length	2.60 in (6.604 cm)
Unit Type of Package 2	CAR
Number of Units in Package 2	5
Package 2 Weight	13.60 oz (385.553 g)
Package 2 Height	3.80 in (9.652 cm)
Package 2 width	6.50 in (16.51 cm)
Package 2 Length	6.90 in (17.526 cm)
Unit Type of Package 3	BB1
Number of Units in Package 3	5
Package 3 Weight	1.12 oz (31.751 g)
Package 3 Height	1.50 in (3.81 cm)
Package 3 width	7.60 in (19.304 cm)
Package 3 Length	2.60 in (6.604 cm)

The information provided in this documentation contains general descriptions and/or technical characteristics of the performance of the products contained herein. This documentation is not intended as a substitute for and is not to be used for determining suitability or reliability of these products for specific user applications. It is the duty of any such user or integrator to perform the appropriate and complete risk analysis, evaluation and testing of the products with respect to the relevant specific application or use thereof. Neither Schneider Electric Industries SAS nor any of its affiliates or subsidiaries shall be responsible or liable for misuse of the information contained herein.

Offer Sustainability

REACH free of SVHC	Yes
EU RoHS Directive	Compliant EU RoHS Declaration
Toxic heavy metal free	Yes
Mercury free	Yes
RoHS exemption information	Yes
China RoHS Regulation	China RoHS Declaration

Contractual warranty

Warranty	18 months
----------	-----------