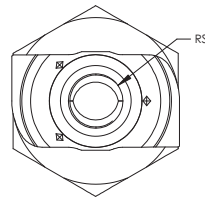
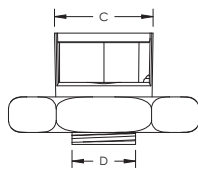
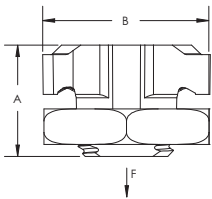


CADDY ROD LOCK Channel Nut – CRLS37EG



- Provides fast universal attachment of threaded rod and hardware to standard strut profiles
- Can be used to prefabricate assemblies which can be quickly pushed onto previously installed threaded rods
- Works with slightly damaged threads and minor burrs on the threaded rod



Part Number	CRLS37EG
Material	Cast Iron
Finish	Electrogalvanized
Rod Size (RS)	3/8"
A	0.91"
B	1.4"
C	0.769"
D	0.53"
Static Load (F)	750 lb
Standard Packaging Quantity	100 pc
UPC	78285664946
EAN-13	8711893059830

For use on plain and electro zinc plated hardware only.

WARNING

Pentair products shall be installed and used only as indicated in Pentair's product instruction sheets and training materials. Instruction sheets are available at erico.pentair.com and from your Pentair customer service representative. Improper installation, misuse, misapplication or other failure to completely follow Pentair's instructions and warnings may cause product malfunction, property damage, serious bodily injury and death and/or void your warranty.

© 2017 Pentair All rights reserved

Pentair, CADDY, CADWELD, CRITEC, ERICO, ERIFLEX, ERITECH and LENTON are owned by Pentair or its global affiliates.

All other trademarks are the property of their respective owners. Pentair reserves the right to change specifications without prior notice.

