

# Product data sheet

## Characteristics

# QO130M200P

Load center, QO, 1 phase, 30 spaces, 30 circuits, 200A convertible main breaker, NEMA1, UL



### Main

Marketing Trade Name	QO
Product Type	Load Center
Cover Type	Order separately

### Complementary

Tightening Torque	Cover 20 lb.in
Load Center Type	Main breaker
Rated Current	200 A
Number of Spaces	30
Max Short Circuit Current Rating	22 kA
Maximum Number of Single Pole Circuits	40
Maximum Number of Tandem Breakers	10
Number of Phases	1 phase
Voltage Rating	120/240 V AC
Wire Size	AWG 4...250 kcmil aluminium/copper
Ground Bar	Grounding bar (ordered separately)
Electrical Connection	Lugs
Wiring Configuration	3-wire
Busbar Material	Tin plated copper busbar
Enclosure Material	Welded sheet steel
Surface Finish	Baked enamel Gray
Box Number	9
Height	29.84 in (758 mm)
Width	14.25 in (362 mm)

### Environment

Enclosure Rating	NEMA 1 indoor
Ambient Air Temperature for Operation	23 °F (-5 °C) 104 °F (40 °C)
Product Certifications	UL Listed

### Ordering and shipping details

Category	10001 - QO PON 1PH LC,12-60 CKT, MB N1
Discount Schedule	DE3A
GTIN	00785901242536
Nbr. of units in pkg.	1
Package weight(Lbs)	18.94 lb(US) (8.59 kg)

Returnability	Yes
Country of origin	US

### Packing Units

Package 1 Height	4.20 in (10.668 cm)
Package 1 width	14.70 in (37.338 cm)
Package 1 Length	31.00 in (78.740 cm)

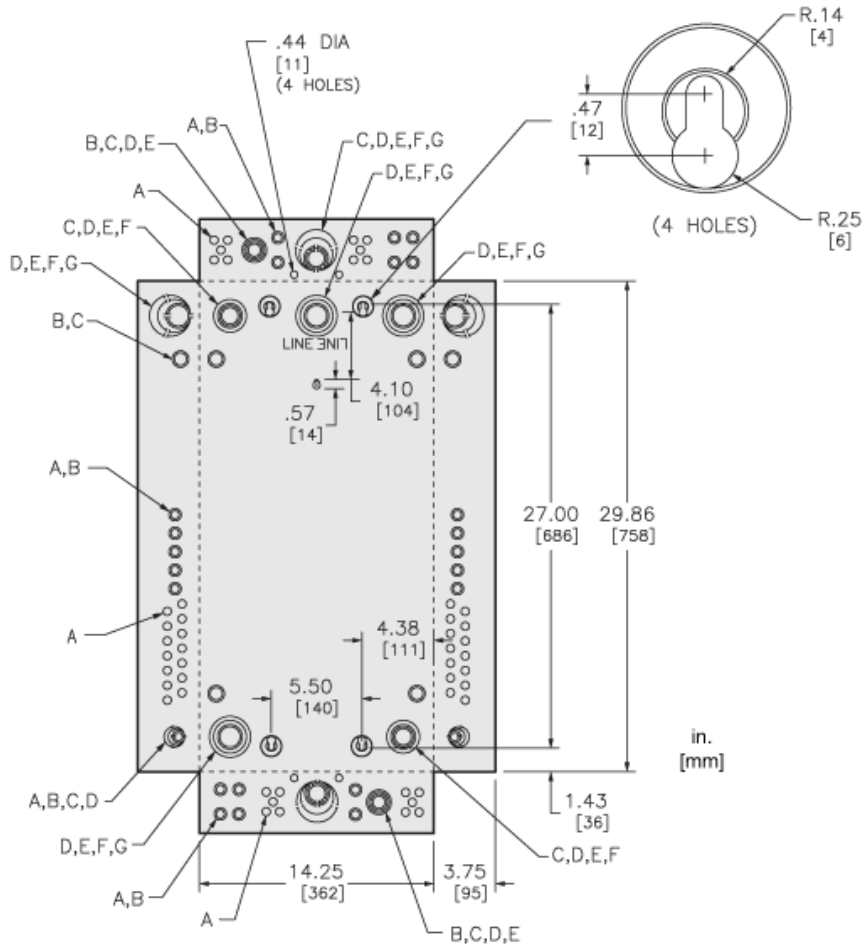
### Offer Sustainability

California proposition 65	WARNING: This product can expose you to chemicals including: Lead and lead compounds, which is known to the State of California to cause cancer and birth defects or other reproductive harm. For more information go to <a href="http://www.P65Warnings.ca.gov">www.P65Warnings.ca.gov</a>
REACH Regulation	<a href="#">REACH Declaration</a>
REACH free of SVHC	Yes
EU RoHS Directive	Compliant <a href="#">EU RoHS Declaration</a>
Toxic heavy metal free	Yes
Mercury free	Yes
RoHS exemption information	<a href="#">Yes</a>
China RoHS Regulation	<a href="#">China RoHS Declaration</a>

### Contractual warranty

Warranty	18 months
----------	-----------

Approximate Dimensions



KNOCKOUTS							
SYMBOL	A	B	C	D	E	F	G
IN	.50	.75	1.00	1.25	1.50	2.00	2.50
MM	13	19	25	32	38	51	64

## Connections and Wiring Diagrams

