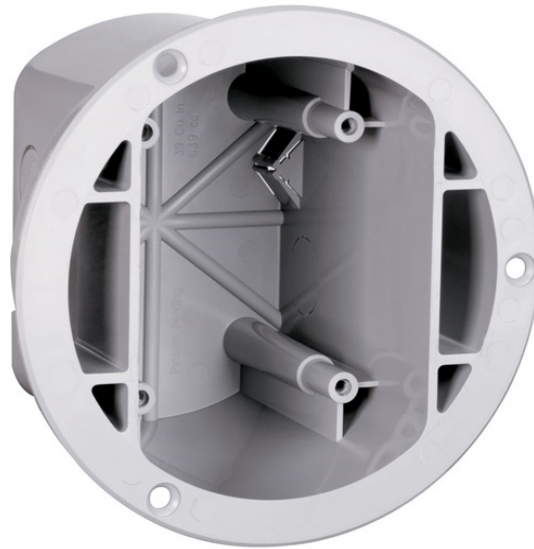


## Floor Box

TM1542BOX



Floor Box. 38 cubic inch, with knockouts and Auto/Clamps, three screws for mounting to floor. Gray.



### features & benefits

- Hinged door is removable and easily replaceable.
- Durable construction, impact, and scratch resistant PVC construction.
- Standard Decorator opening that accepts GFCI, TVSS, DataCom, or other Decorator devices.
- Auto/Clamps and knockouts on both sides of box.
- Meets UL514(c) scrub water exclusion test.
- Threaded device mounting holes.
- Simple mounting box, fits into a 4 3/4 inch hole and mounts with 3 screws included.
- Ready for low-voltage wiring, drill guides on underside of cover.
- UL and cUL Listed.
- Captive screws on TM1542 Series -- screws will not be lost -- new.
- Made in USA.

### specifications

#### General Info

Product Series: Slater  
Component Type: Full Assemblies

#### Listing Agencies/Third Party Information

CSA Listing Info: No  
CUL Listing No: No

cULus: No  
cURus: No  
Federal Spec: No  
UL Listing No: No  
UN SPS C: 39121308  
UR: No

**Dimensions**

Depth U S: 4.0"  
Diameter U S: 5.5"

**Technical Information**

Floor Type: Wood

**Buy American Act Compliance**

Country of Origin: UNITED-STATES-OF-AMERICA  
Buy American Act Status: Buy American Act Compliant