

General Duty Safety Switch

Type VBII, 200 Amp, 240 Volts, Type 3R (Outdoor)

Standards and Ratings

- UL Listed under file #E4776
- Meets UL98 for switches and UL 50 for enclosures
- Meets NEMA Standard KS-1 for enclosed switches
- Meets NEC wire bending space requirements
- Rated 10,000 AIC with Class H fuses or 100,000 AIC with Class R or T fuses
- Suitable for use as service entrance equipment

Features

- Quick-make and break switching action
- Double break visible blade design
- Highly visible ON/OFF indication
- Rugged installer friendly enclosure design
- Modular design allows quick and easy replacement of parts
- Single cover interlock

General Information

Catalog Number	Description	Shipping Weight (lbs.)
GF224NR 1	2 Pole, 3 Wire, Fusible	48
GF324NR	3 Pole, 4 Wire, Fusible	50
GNF324R	3 Pole, 3 Wire, Non-Fusible	47

Horsepower Ratings 2

Catalog Number	1 Phase, 3 Wire, 240V AC		3 Phase, 3 Wire, 240V AC		250V DC
	Std	Max	Std	Max	
GF224NR	15	—	25	60	40
GF324NR	15	—	25	60	40
GNF324R	—	15	—	60	40

Accessories

Catalog Number	Description
HG61234	Equipment Ground Lug Kit
HN64	Neutral Kit
HT24	Class T Fuse Clip Kit (1-Pole per kit) (GF224NR, GF324NR)
HR64	Class R Fuse Clip Kit (3 fuse clips per kit) (GF224NR, GF324NR)
H150	1.50" Type "HS" Outdoor Hub
H200	2.00" Type "HS" Outdoor Hub
H250	2.50" Type "HS" Outdoor Hub

Replacement Parts

Catalog Number	Description
HFB64	Fusible Line Side Replacement Base (GF224NR, GF324NR)
HBB64	Fusible Load Side Replacement Base (GF224NR, GF324NR)
HNB64	Non-Fusible Replacement Base (GNF324R)
GH24	Replacement Handle/Handle Guard
HM64	Replacement Mechanism
HL64	Replacement Lugs (3 lugs per kit)

Mechanical Lug Wire Ranges (60/75°C, Cu/Al)

Description	Wire Range
Line, Load, Neutral	#6 AWG - 300 Kcmil
Neutral Ground	#14-1/0 AWG
Ground Lug Kit	#14-4 AWG

1 These switches are UL Listed for application on grounded B phase systems.

2 Dual horsepower ratings: Std - applies when non-time delay fuses are installed.
Max - applies when time-delay fuses are installed.

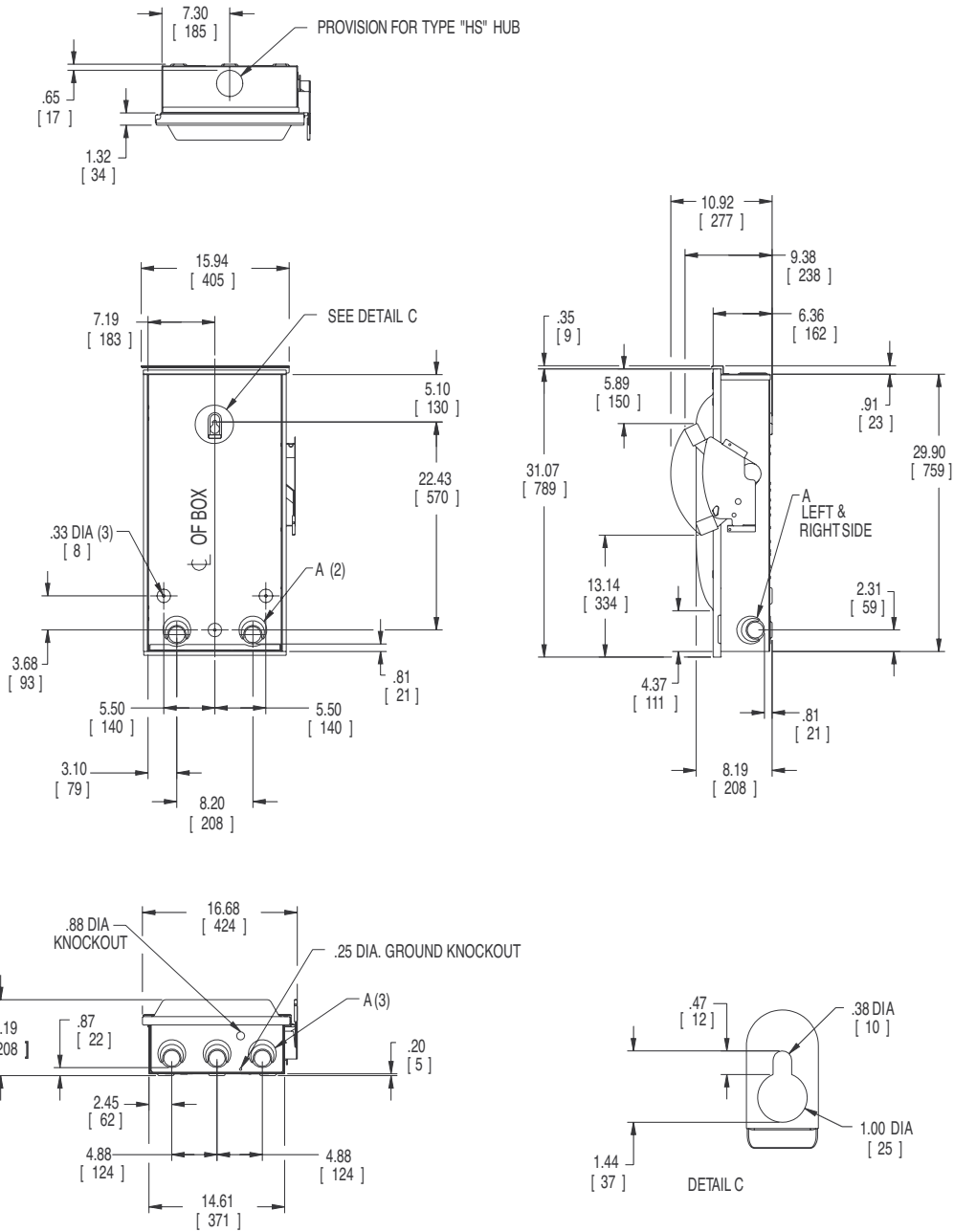
Product Specification Sheet GD200.2

Answers for industry.

SIEMENS

Product Specification Sheet #GD200.2 (page 2 of 2)

Dimension Drawing



Dimensions shown in inches and millimeters (.).
Dimension shown accurate to ± 1/8 inch.

KNOCKOUT CODE	CONDUIT SIZE			
	1.25	1.50	2.00	2.50
A (Tangential)				

	LINE SIDE WIRE BEND	LOAD SIDE WIRE BEND
Fused	7.87 (200)	10.34 (263)
Non-Fused	7.87 (200)	15.84 (402)

Enclosure: Galvanized Steel
.054 Thick (17 Gauge)
Finish: ANSI Grey #61 Paint