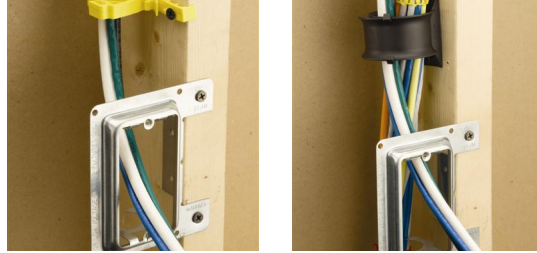
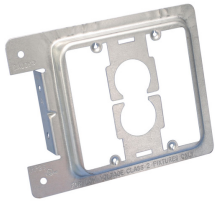
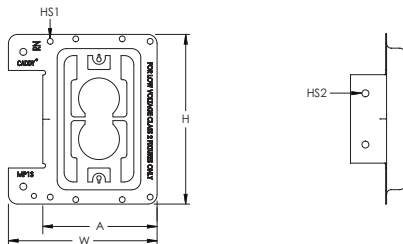


Low Voltage Mounting Plate for New Construction – MP2S



- Provides a bracket for mounting low voltage Class 2 communication outlets
- Reduces bulges in the dry wall caused by plaster rings
- May be installed to the front or the side of the metal or wood stud
- Side support provides for a rigid installation
- Attaches with self-tapping screws or nails
- Works with wood or metal studs



Part Number	MP2S
Material	Steel
Finish	Pregalvanized
Gang	2
Drywall Thickness	1/2" – 5/8"
Height (H)	4 1/2"
Width (W)	5.8"
A	2.667"
Hole Size 1 (HS1)	0.156"
Hole Size 2 (HS2)	0.187"
Certifications	cULus
Standard Packaging Quantity	25 pc
UPC	78285648662

No load rating, for positioning only.

UL, UR, cUL, cUR, cULus and cURus are registered certification marks of UL LLC.

WARNING

Pentair products shall be installed and used only as indicated in Pentair's product instruction sheets and training materials. Instruction sheets are available at erico.pentair.com and from your Pentair customer service representative. Improper installation, misuse, misapplication or other failure to completely follow Pentair's instructions and warnings may cause product malfunction, property damage, serious bodily injury and death and/or void your warranty.

© 2017 Pentair All rights reserved

Pentair, CADDY, CADWELD, CRITEC, ERICO, ERIFLEX, ERITECH and LENTON are owned by Pentair or its global affiliates.

All other trademarks are the property of their respective owners. Pentair reserves the right to change specifications without prior notice.

