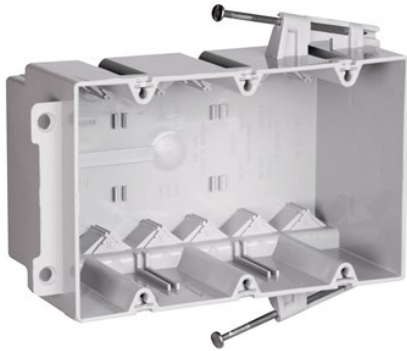

SWITCH & OUTLET BOX

S354RAC | [Pass & Seymour](#)



FEATURES & BENEFITS

Triple Gang Switch and Outlet Box with captive mounting nails on each end. It has six Auto/Clamps each end with Quick/Click entries. It is easy to install with a rectangular cutout. It is made with a durable, impact-resistant thermoplastic box. It has innovative extras that help cut installation time. 50 pack.



PRODUCT

ENVIRONMENTAL PROFILE

- Quick/Click feature secures devices quickly and easily.
- Does not strip when over-torqued.
- 6 Auto/Clamps on each end eliminate the need for separate cable clamps.

SPECIFICATIONS

GENERAL INFO

Product Series: Slater

Type: Box

Special Features: Quick/Click, Auto Clamps

LISTING AGENCIES/THIRD PARTY CERTIFICATIONS

Federal Spec: No

UL Standard: Yes

UN SPSC: 39121308

DIMENSIONS

Depth (US): 3.0"

Height (US): 3.96875"

Width (US): 5.78125"

TECHNICAL INFORMATION

Material: Plastic

Mounting: Captive Mounting Nails

NEMA Configuration Number: OS2

BUY AMERICAN ACT COMPLIANCE

Country Of Origin: UNITED STATES OF AMERICA

Buy American Act Status: Buy American Act Compliant

