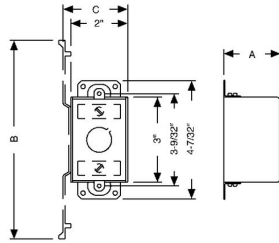




## 3 IN. X 2 IN. SWITCH BOXES - 2-3/4 TO 3-1/2 IN. DEEP WITH CONDUIT KO'S

3-1/2 in. Deep Switch Boxes - Gangable with Conduit KO's  
Plaster Ears

A48



Catalog #: 590

### APPLICATIONS

RACO® Switch boxes are used to house wiring devices such as switches and outlets  
N/A

### PRODUCT FEATURES

Gangable switch boxes offer the option of constructing a box to hold two or more devices  
Plaster ears allow a box to be used in "old work" applications

### UL LISTED

File E195978

### COMPLIANCES

All RACO® single gang, two gang, 4 in. square, and single gang gangable UL listed steel boxes are acceptable for use in 2-hour fire rated walls. For additional information, consult UL "Fire Resistance Directory" or the UL website at [www.ul.com](http://www.ul.com)

MSDS

[www.hubbell-rtb.com/certifications/Hubbell-RACO\\_MSDS\\_for\\_Steel\\_Boxes\\_and\\_Covers.pdf](http://www.hubbell-rtb.com/certifications/Hubbell-RACO_MSDS_for_Steel_Boxes_and_Covers.pdf)

### FIRE RESISTANCE

Acceptable for use in 2-hour rated walls

### GENERAL PRODUCT INFORMATION

Wiring System: Conduit

### CONFIGURATION

End Knockouts: (2) 1/2 in.  
Ends Cable: ---  
Bracket Type: No Bracket  
Side Knockout(s): (4) 1/2 in.  
Bottom Knockouts(s): (1) 1/2 in.

### DRAWING DIMENSIONS

Dimension A: 3-1/2 in.

### PRODUCT MEASUREMENTS

Depth: 3-1/2 in.  
Cubic Inches (cm3): 18.0 (295.0)  
Wt. Ea. (Lbs.): 0.721  
Product Length (in.): 3.50  
Product Width (in.): 4.22  
Product Height (in.): 2.00

### PACKAGING

Minimum Pack Qty.: 50  
Std. Pkg.: 50  
Product UPC-A Labeled: No  
Weight (Lbs. Per/C): 72.10  
Ship Carton Length (in.): 18.13  
Ship Carton Width (in.): 7.88  
Ship Carton Height (in.): 11.63  
Ctn Weight (Lbs.): 36.05  
Pallet Qty: 2700  
UPC Number: 050169905906  
I2of5: 50050169905901