

Product data sheet

Characteristics

HOM4080L225PC

Load center, Homeline, 1 phase, 40 spaces, 80 circuits, 225A convertible main lugs, PoN, NEMA1, combo cover



Main

Product or component type	Load Center
Marketing Trade Name	Homeline
Load center type	Main lugs
Line Rated Current	225 A
Number of spaces	40
Number of circuits	80
Enclosure Rating	NEMA 1 indoor NEMA 3R outdoor
Cover type	Combination flush/surface cover
Electrical connection	Lugs
Included Options	Grounding bar 1)

Complementary

Short-circuit current	10 kA
Number of Tandem Breakers	40
Number of Phases	1 phase
[Ue] rated operational voltage	120/240 V AC
Wire Size	AWG 4...250 kcmil copper AWG 4...300 kcmil aluminium AWG 4...250 kcmil aluminium/copper
Wiring configuration	3-wire
Number of Monitored Circuits	6 standard
Cover finish	Gray baked enamel
Busbar Material	Tin plated aluminium busbar
Enclosure material	Welded sheet steel
Surface finish	Baked enamel Gray Baked enamel White
Box number	12
Maximum Height	39.37 in (1000 mm)
Maximum Width	14.25 in (362 mm)
Maximum Depth	3.74 in (95 mm)

Environment

Ambient air temperature for operation	23 °F (-5 °C) 104 °F (40 °C)
Product certifications	UL E-6294 UL Listed UL

Ordering and shipping details

Category	00045 - HOM LC&CVR,12-42 CKT,NEMA1
Discount Schedule	DE3C
GTIN	00785901978145
Nbr. of units in pkg.	1
Package weight(Lbs)	35.3 lb(US) (16.01 kg)

Returnability	Yes
Country of origin	US

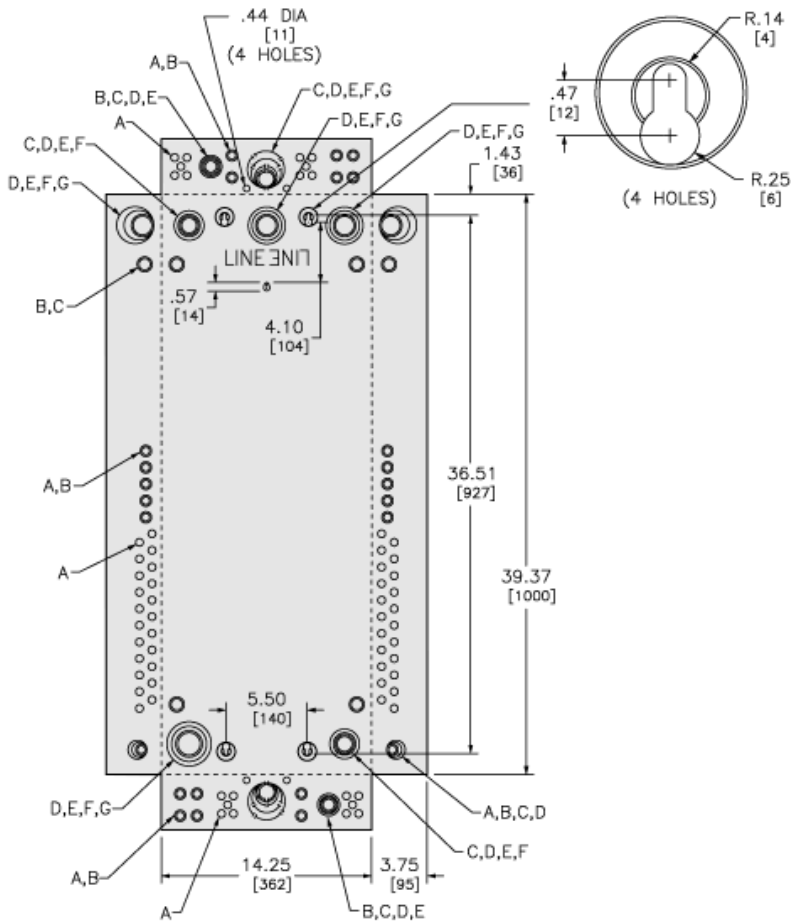
Packing Units

Unit Type of Package 1	PCE
Package 1 Height	5.79 in (14.7 cm)
Package 1 width	16.30 in (41.4 cm)
Package 1 Length	41.81 in (106.2 cm)
Unit Type of Package 2	PAL
Number of Units in Package 2	18
Package 2 Weight	648.00 lb(US) (293.928 kg)
Package 2 Height	40.00 in (101.6 cm)
Package 2 width	40.00 in (101.6 cm)
Package 2 Length	45.00 in (114.3 cm)

Offer Sustainability

Sustainable offer status	Green Premium product
REACH free of SVHC	Yes
EU RoHS Directive	Compliant EU RoHS Declaration
Toxic heavy metal free	Yes
Mercury free	Yes
RoHS exemption information	Yes
China RoHS Regulation	China RoHS Declaration
Environmental Disclosure	Product Environmental Profile

Approximate Dimensions and Knockout Sizes



KNOCKOUTS							
SYMBOL	A	B	C	D	E	F	G
IN	.50	.75	1.00	1.25	1.50	2.00	2.50
MM	13	19	25	32	38	51	64

in.
[mm]

Connections and Wiring Diagrams

