

DRAWING NO.  
CSC031888-01

CATALOG NUMBER	COMMERCIAL CABLE SIZE	STUD SIZE	FIG. NO.	C	D ±.030	H REF	K DIA. ±.030	L ±.030	N ±.020	T	RECOMMENDED TIGHTENING TORQUE IN-LBS [N-M]	HARDWARE
KPA8CUP	14 SOL .064 DIA. [1.63] TO 6 STR (.184) DIA. [4.67]	#10	1	.38 [10]	.56 [14]	.81 [21]	.20 [5]	1.04 [26]	.22 [6]	.07 [2]	4 NM (35 IN./LBS.)	#12-24 SLOT
KPA4CUP	14 SOL .064 DIA. [1.63] TO 4 STR (.184) DIA. [5.89]	1/4	2	.50 [13]	.71 [18]	1.00 [25]	.28 [7]	1.28 [33]	.33 [8]	.07 [2]	5.1 NM (45 IN./LBS.)	5/16 DIA. SLOT ROBERTSON

REV	DATE	DESCRIPTION	ECO	BY	C'H'K.
B	02/15/2012 11:11:11 AM	UPDATED AS PER MARK UP	26118	TS	MA

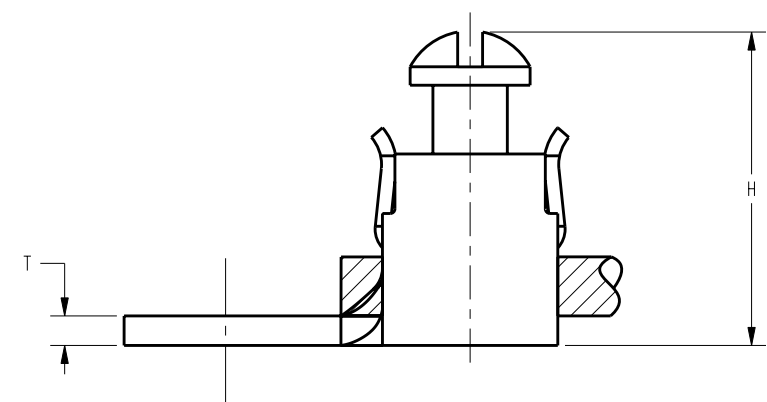
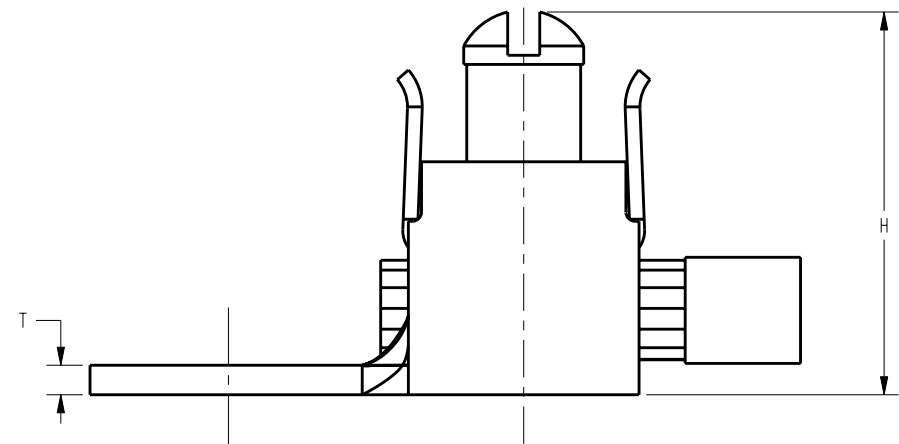
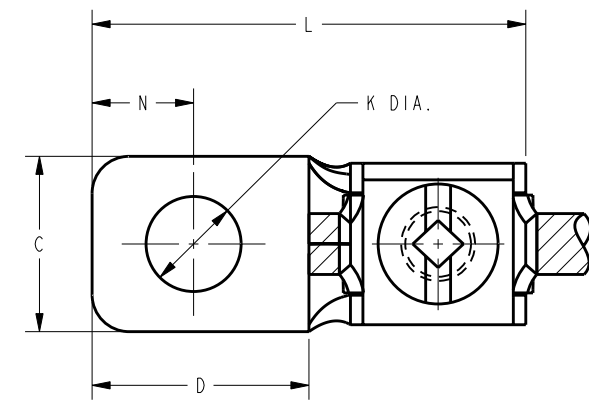
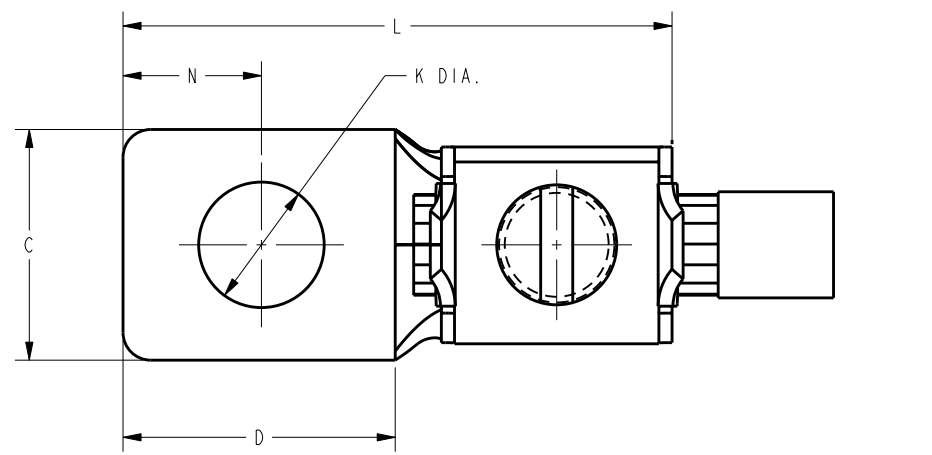


FIG 1

FIG 2

NOTES:

1. MATERIAL: ETP COPPER ALLOY 110.
2. FINGER TIGHT TORQUE FOR MAX. CONDUCTOR.
3. DIMENSIONS IN BRACKETS [ ] ARE IN MILLIMETERS, ROUNDED OFF TO THE NEAREST MILLIMETER, UNLESS OTHERWISE NOTED, AND ARE FOR REFERENCE ONLY.
4. FOR TIN PLATING DROP UP SUFFIX AND ADD TP SUFFIX.

TO ORDER BURNDY® PRODUCTS CALL  
 UNITED STATES:  
 1-800-346-4175 (LONDONDERRY, NH)  
 CANADA:  
 1-800-361-6975 (QUEBEC)  
 1-800-387-6487 (ALL OTHER PROVINCES)  
 FOR PRODUCT INFO: <http://www.burndy.com>

SCRULUG™	
ITEM NO: --	
CAT. NO: KPA-- (SEE TABLE)	
DRAWN BY: R. BOISVERT 03/30/2007	
CHECKER: PL 03/30/2007	
DSN APPVL: W. ZAHLMAN 03/08/2007	
MFG APPVL: --	
QA APPVL: J. BRODEUR 03/14/2007	
MKT APPVL: J. SYLVIA 03/08/2007	
PROD FAM: --	SCALE: 2:1
PROJECT #: --	DRAWING NO
DOCUMENT TYPE: Sales	CSC031888-01
REL LEVEL: Released	SHEET 1 OF 1

REV: PE0200

