



Main

Product Type	Load Center value pack
Marketing Trade Name	Homeline
Load Center Type	Main breaker
Rated Current	200 A
Number of Spaces	40
Maximum Number of Single Pole Circuits	80
Enclosure Rating	NEMA 1 indoor
Cover Type	Combination flush/surface cover
Electrical Connection	Lugs
Provided Equipment	Circuit breaker 1) 2P 200 A 120/240 V AC main supply ready assembled Circuit breaker 3) 1P 20 A 120/240 V AC Circuit breaker 2) 2P 30 A 120/240 V AC

Complementary

Max Short Circuit Current Rating	22 kA
Maximum Number of Tandem Breakers	40
Number of Phases	1 phase
Voltage Rating	120/240 V AC
Wire Size	AWG 4...250 kcmil aluminium/copper
Ground Bar	Grounding bar (ordered separately)
Wiring Configuration	3-wire
Busbar Material	Tin plated aluminium busbar
Enclosure Material	Welded sheet steel
Surface Finish	Baked enamel Gray
Box Number	12
Height	39.37 in (1000 mm)
Width	14.25 in (362 mm)
Depth	3.74 in (95 mm)

Environment

Ambient Air Temperature for Operation	23 °F (-5 °C) 104 °F (40 °C)
Product Certifications	UL listed file E-6294

Ordering and shipping details

Category	00185 - MISC. HOM LOAD CENTERS
Discount Schedule	DE3C
GTIN	00785901977513
Nbr. of units in pkg.	1
Package weight(Lbs)	39.7 lb(US) (18.01 kg)
Returnability	Yes
Country of origin	US

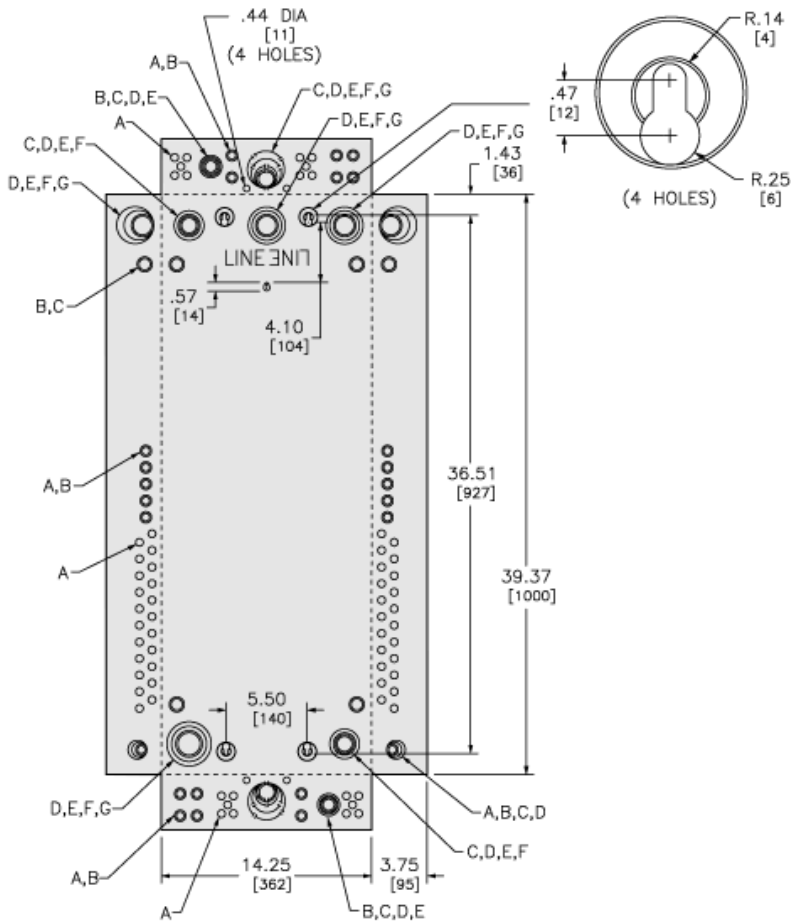
Packing Units

Unit Type of Package 1	PCE
Package 1 Height	5.71 in (14.5 cm)
Package 1 width	16.30 in (41.4 cm)
Package 1 Length	42.20 in (107.2 cm)
Unit Type of Package 2	PAL
Number of Units in Package 2	18
Package 2 Weight	670.00 lb(US) (303.907 kg)
Package 2 Height	40.00 in (101.6 cm)
Package 2 width	40.00 in (101.6 cm)
Package 2 Length	48.00 in (121.92 cm)

Offer Sustainability

Sustainable offer status	Green Premium product
California proposition 65	WARNING: This product can expose you to chemicals including: Lead and lead compounds, which is known to the State of California to cause cancer and birth defects or other reproductive harm. For more information go to www.P65Warnings.ca.gov
REACH Regulation	REACH Declaration
REACH free of SVHC	Yes
EU RoHS Directive	Compliant EU RoHS Declaration
Toxic heavy metal free	Yes
Mercury free	Yes
RoHS exemption information	Yes
China RoHS Regulation	China RoHS Declaration
Environmental Disclosure	Product Environmental Profile

Approximate Dimensions and Knockout Sizes



KNOCKOUTS							
SYMBOL	A	B	C	D	E	F	G
IN	.50	.75	1.00	1.25	1.50	2.00	2.50
MM	13	19	25	32	38	51	64

in.
[mm]

Connections and Wiring Diagrams

