

TYPE GTA

Features

- Manufactured from high strength 6061-T6 aluminum alloy
- Electro-tin plated
- UL Listed and CSA Certified for 600 volts, 90° C
- Compact design
- Range taking
- Re-usable
- Lay-in main conductor
- Insulating cover available

Benefits

- Suitable for use with either copper or aluminum conductors
- Provides low contact resistance
- Ensures reliability for copper or aluminum conductors
- Saves space and reduces installation time
- Permits inventories to be kept to a minimum
- Provides efficient use and flexibility in the field
- No need to break the feeder cable
- Eliminates taping

B

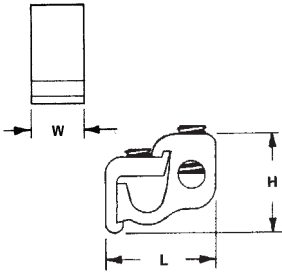


Fig. 1



Fig. 2



Catalog Number	Figure Number	Wire Range		Dimensions			Hex Size	
		Main	Tap	L	W	H	Main	Tap
GTA-2-2	1	2-12 str	2-12 AL 2-14 CU	1-1/4	9/16	1	Slot	Slot
GTA-0-0	1	1/0-2	1/0-12 AL 1/0-14 CU	1-9/16	3/4	1-1/8	Slot	Slot
GTA-250-0	1	250kcmil-1/0	1/0-12 AL 1/0-14 CU	2	15/16	1-7/16	5/16	Slot
GTA-250-250	1	250kcmil-1/0	250kcmil-6	2-1/8	15/16	1-7/16	5/16	5/16
GTA-350-350	1	350kcmil-4/0	350kcmil-6	2-7/16	1	1-11/16	3/8	3/8
GTA-500-500	1	500kcmil-350kcmil	500kcmil-2	2-15/16	1-1/4	2	3/8	3/8
GTA-750-500	1	750kcmil-500kcmil	500kcmil-2	3-3/8	1-5/16	2-7/16	3/8	3/8
GTA-750-750	2	750kcmil-500kcmil	750kcmil-1/0	3-3/8	2-5/8	2-7/16	1/2	1/2
GTA-1000-500	1	1000kcmil-750kcmil	500kcmil-2	3-3/8	1-15/16	2-7/16	1/2	3/8

Note: If ordering with cover, add suffix W/C to catalog number.

All wire sizes, unless noted otherwise, are American Wire Gauge (AWG)

Insulating covers are available for most connector sizes.

See page 138 for additional information on covers

DE-OX Inhibitor is recommended for all aluminum terminations.

Tested to UL 486A/B, UL File E6207

TYPE GTA

Features

- Manufactured from high strength 6061-T6 aluminum alloy
- Electro-tin plated
- UL Listed and CSA Certified for 600 volts, 90° C
- Compact design
- Range taking
- Re-usable
- Lay-in main conductor
- Insulating cover available

Benefits

- Suitable for use with either copper or aluminum conductors
- Provides low contact resistance
- Ensures reliability for copper or aluminum conductors
- Saves space and reduces installation time
- Permits inventories to be kept to a minimum
- Provides efficient use and flexibility in the field
- No need to break the feeder cable
- Eliminates taping

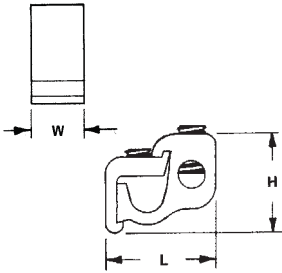


Fig. 1



Fig. 2



Catalog Number	Figure Number	Wire Range		Dimensions			Hex Size	
		Main	Tap	L	W	H	Main	Tap
GTA-2-2	1	2-12 str	2-12 AL 2-14 CU	1-1/4	9/16	1	Slot	Slot
GTA-0-0	1	1/0-2	1/0-12 AL 1/0-14 CU	1-9/16	3/4	1-1/8	Slot	Slot
GTA-250-0	1	250kcmil-1/0	1/0-12 AL 1/0-14 CU	2	15/16	1-7/16	5/16	Slot
GTA-250-250	1	250kcmil-1/0	250kcmil-6	2-1/8	15/16	1-7/16	5/16	5/16
GTA-350-350	1	350kcmil-4/0	350kcmil-6	2-7/16	1	1-11/16	3/8	3/8
GTA-500-500	1	500kcmil-350kcmil	500kcmil-2	2-15/16	1-1/4	2	3/8	3/8
GTA-750-500	1	750kcmil-500kcmil	500kcmil-2	3-3/8	1-5/16	2-7/16	3/8	3/8
GTA-750-750	2	750kcmil-500kcmil	750kcmil-1/0	3-3/8	2-5/8	2-7/16	1/2	1/2
GTA-1000-500	1	1000kcmil-750kcmil	500kcmil-2	3-3/8	1-15/16	2-7/16	1/2	3/8

Note: If ordering with cover, add suffix W/C to catalog number.

All wire sizes, unless noted otherwise, are American Wire Gauge (AWG)

Insulating covers are available for most connector sizes.

See page 158 for additional information on covers

DE-OX Inhibitor is recommended for all aluminum terminations.

Tested to UL 486A/B, UL File E6207

TYPE GTA/GTT KITS

Features

- Kit includes connector, cover and 5cc DE-OX tube
- Manufactured from high strength aluminum alloy
- Cover has snap closure
- UL Listed and CSA Certified for 600 volts, 90° C

Benefits

- Saves time, convenient
- Suitable for use with copper or aluminum conductors
- Installs quickly, eliminates taping
- Ensures reliability



Fig. 1



Fig. 2

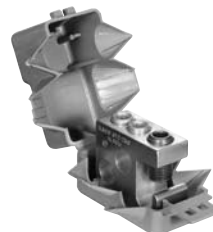


Fig. 3

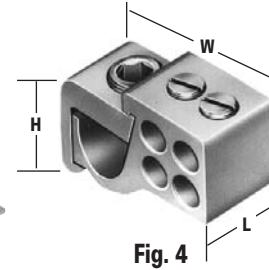


Fig. 4

Catalog Number	Figure Number	Wire Range		No. of Taps	Dimensions			Hex Size	
		Main	Tap		L	W	H	Main	Tap
GTA-0-0-KIT	1	1/0-2	1/0-12 AL, 1/0-14 CU	1	3/4	1-7/16	1-1/8	Slot	Slot
GTA-2-2-KIT	1	2-12	2-12 AL, 2-14 CU	1	9/16	1-1/8	1	Slot	Slot
GTA-250-0-KIT	1	250kcmil-1/0	1/0-12 AL, 1/0-14 CU	1	7/8	2	1-7/16	5/16	Slot
GTA-250-250-KIT	1	250kcmil-1/0	250kcmil-6	1	7/8	2	1-7/16	5/16	5/16
GTT-0-0-KIT	2	1/0-2	1/0-12 AL, 1/0-14 CU	1	3/4	1-9/16	1-1/8	Slot	Slot
GTT-2-2-KIT	2	2-12	2-12 AL, 2-14 CU	1	9/16	1-1/4	1	Slot	Slot
GTT-250-0-KIT	2	250kcmil-1/0	1/0-12 AL, 1/0-14 CU	1	7/8	2	1-7/16	5/16	Slot
GTT-250-250-KIT	2	250kcmil-1/0	250kcmil-6	1	7/8	2-1/8	1-7/16	5/16	5/16
GT2-250-KIT	3	250kcmil-2	250kcmil-2	2	1-3/4	3-1/4	2-1/2	5/16	5/16
GT4T-250-2-2-KIT	4	250kcmil-1/0	2-12 AL, 2-14 CU	4	2-1/4	1	1-11/16	5/16	Slot
GT4T-350-2-2-KIT	4	350kcmil-4/0	2-12 AL, 2-14 CU	4	2-7/16	1	1-3/4	3/8	Slot

All wire sizes, unless noted otherwise, are American Wire Gauge (AWG)

Note: Covers are for indoor use only.

Tested to UL 486A/B, UL File E6207