

# WP6000 & WP7000 Non-Metallic Low-Profile In-Use Receptacle Covers

WP6000 & WP7000 Standard and Extra-Duty plastic Series

Low-Profile In-Use Covers are easy to install and shipped with a gasket, mounting screws, base and cover assembly, and inserts for a variety of applications.

## Features

- New low-profile design offers an expandable front window that can be collapsed to save space when not in use
- Complies with 2017 NEC for Wet Locations/Extra-Duty Applications (WP7000 and WP7200 models only) and CEC Section 26-702
- Heavy-duty UV stabilized polycarbonate construction ensures long-lasting durability
- Single-gang covers mount vertically or horizontally
- Single-gang models:
  - GFCI pre-set for faster installation
  - Two inserts are provided with all models, allowing for up to eight unique configurations
- Double-gang models:
  - GFCI pre-set for faster installation
  - Four inserts are provided with all models, allowing for up to 16 unique configurations
- Reinforced hinge pin: Designed to withstand a 40 lbs. hinge hang/stress test
- Impact-rated: Tested in 12 lbs. impact test to ensure cover remains intact
- Lockable hasp: All models accept up to 0.19" dia shank
- Meets requirements for cold impact testing at -60°F (-51°C)
- 6000/7000/7200 Series available in gray, white and bronze
- 6200 Series is available in gray only

## Ratings

Cover: UV stabilized polycarbonate  
 UL certified for Type 3R Outdoor enclosures  
 Single-gang : 5.5" H x 3.75" W x 1.5" D (not expanded)  
 Double-gang : 5.5" H x 5.6" W x 1.5" D (not expanded)

Mounting base and inserts: UV stabilized polycarbonate

Gasket: Neoprene - 1/8" (4.8 mm) thick with slits for mounting screws

Warranty: Limited 1-year

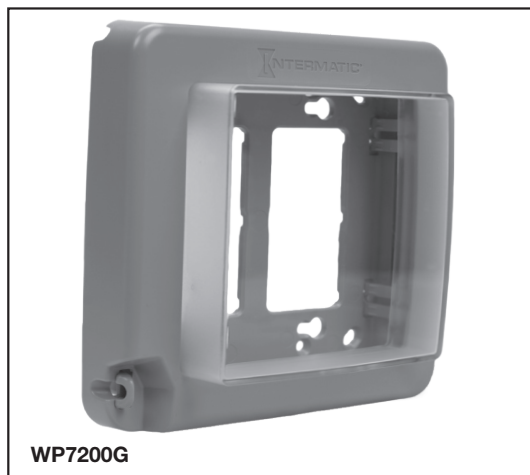
Project: \_\_\_\_\_

Location: \_\_\_\_\_

Product Type: \_\_\_\_\_

Contact/Phone: \_\_\_\_\_

Model #: \_\_\_\_\_



Model Number	Type	Hinge	Extra-Duty	Base & Outer Front Housing Color	Depth
WP6000G	Single-Gang	Vertical/Horizontal	No	Gray	2 1/8"
WP6000W	Single-Gang	Vertical/Horizontal	No	White	2 1/8"
WP6000BR	Single-Gang	Vertical/Horizontal	No	Bronze	2 1/8"
WP7000G	Single-Gang	Vertical/Horizontal	Yes	Gray	2 1/8"
WP7000W	Single-Gang	Vertical/Horizontal	Yes	White	2 1/8"
WP7000BR	Single-Gang	Vertical/Horizontal	Yes	Bronze	2 1/8"
WP6200G	Double-Gang	Vertical	No	Gray	2 1/8"
WP7200G	Double-Gang	Vertical	Yes	Gray	2 1/8"
WP7200W	Double-Gang	Vertical	Yes	White	2 1/8"
WP7200BR	Double-Gang	Vertical	Yes	Bronze	2 1/8"

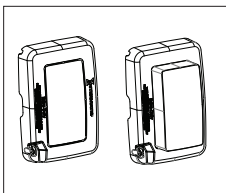
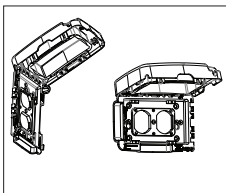
**Specification for Single-Gang**

The weatherproof cover shall be designed to mount on a single-gang \_\_\_\_\_, junction box to ensure weather protection for a standard receptacle. The cover shall mount on indoor or outdoor junction boxes and shall include a weatherproof cover/base assembly, a gasket, two universal inserts and mounting hardware. The outlet cover shall meet UL requirements for wet locations. The weatherproof cover shall be designed to meet requirements of with NEC 2017, Article 406.9(B)(1) compliant for wet locations and extra-duty applications (WP7000 and WP7200 models only) and shall be UL Type 3R Listed. The weatherproof cover shall be constructed entirely of UV stabilized high impact polycarbonate material. The cover, which encloses the cord set, shall be \_\_\_\_\_ (Clear to allow inspection) (or colors as listed above). The cover shall meet agency requirements for cold impact at -60°F (-51°C). The cover shall provide usable inside depth of \_\_\_\_\_ (2 1/8"). The weatherproof cover shall be Intermatic model \_\_\_\_\_ (See Model Numbers Listed). Cover shall be CEC 2018, Section 26-702 (WP7000 and WP7200 models only).

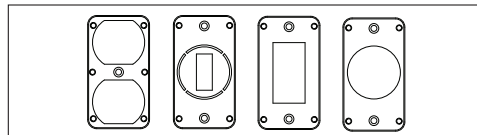
**Specification for Double-Gang**

The weatherproof cover shall be designed to mount on a two-gang \_\_\_\_\_ (Vertical), junction box to ensure weather protection for a standard receptacle. The cover shall mount on indoor or outdoor junction boxes and shall include a weatherproof cover/base assembly, a gasket, four universal inserts and mounting hardware. The outlet cover shall meet UL requirements for wet locations. The weatherproof cover shall be designed to meet requirements of NEC 2017, Article 406.9(B)(1) for wet locations and extra-duty applications and shall be UL Type 3R listed. The weatherproof cover and base shall be constructed entirely of UV stabilized polycarbonate material. The cover, which encloses the cord set, shall be \_\_\_\_\_ (Clear to allow inspection)(or color as listed above). The cover shall meet agency requirements for cold impact at -60°F (-51°C). The cover shall provide a usable inside depth of \_\_\_\_\_ (2 1/8"). The Weatherproof cover shall be Intermatic model \_\_\_\_\_ (See Model Numbers Listed). Cover shall be CEC 2018, Section 26-702 (WP7000 and WP7200 models only).

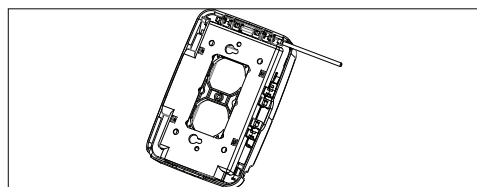
**Diagrams**



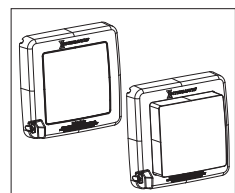
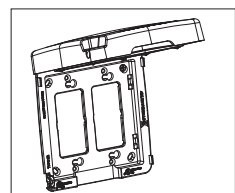
Single-Gang



Configurations



Hinge Pin



Double-Gang