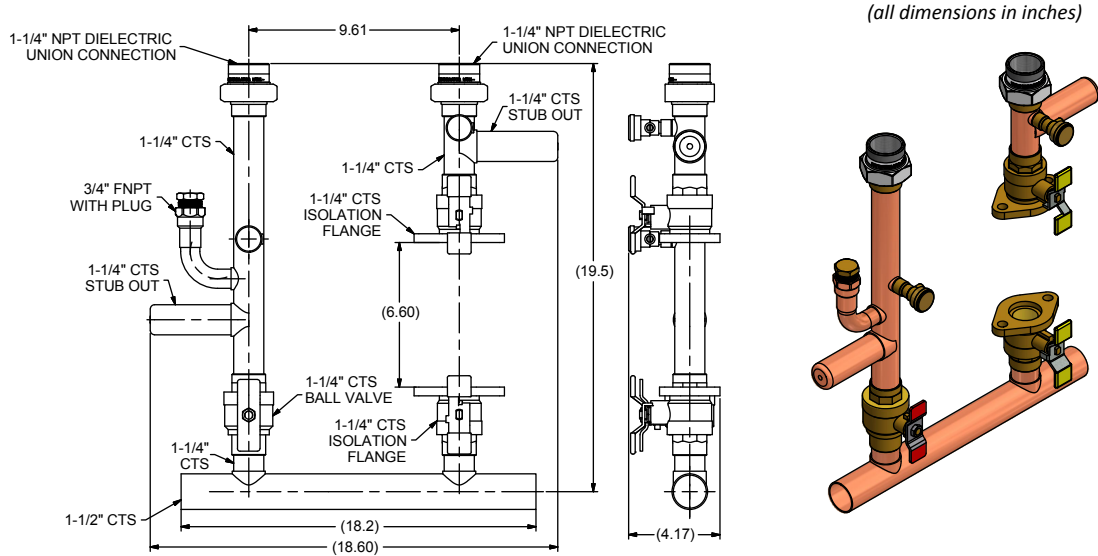


⚠ CAUTION

Please follow these installation instructions carefully in order to avoid a safety hazard and/or injury.

- The NFB-175/200 Series Manifold is approved for use with Navien NFB Series boilers ONLY.
- This accessory must be installed and serviced by a qualified installer or service agency.
- For additional information, refer to the NFB Series Boiler Installation and Operation Manual.

INCLUDED PARTS AND DIMENSIONS

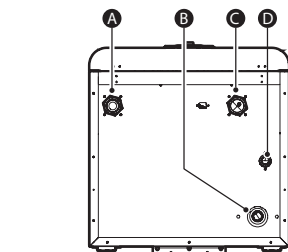


NFB-175/200 Series Manifold (#GFFM-MSOZUS-002) - for use with single boiler units only

PREPARE FOR INSTALLATION

- Before installing the NFB-175/200 Series Manifold, shut off the water supply to the installation site and make sure that the boiler is properly mounted on the wall according to the NFB Installation and Operation Manual.
- Apply thread sealant to the 1-1/4" Heating RETURN and SUPPLY fittings located at the bottom of the boiler unit (see **FIGURE 1**).

NFB Series Supply Connections



- | | |
|-------------------------------|----------|
| A Space Heating Supply | Φ 1-1/4" |
| B Condensate Outlet | Φ 1/2" |
| C Space Heating Return | Φ 1-1/4" |
| D Gas Connection | Φ 3/4" |

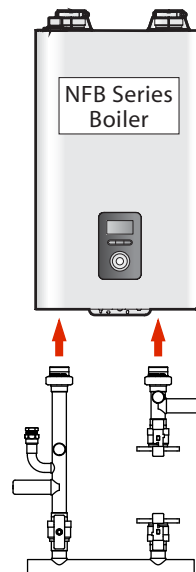


FIGURE 1: Supply and Return Connections on the NFB Series Boiler

MANIFOLD INSTALLATION

- Identify the SUPPLY (red handle) and RETURN (yellow handle) pipe connections on the manifold assembly. Use the provided 1-1/4" unions to attach the piping to their proper connections on the boiler.
- Note** Make sure that the water connections are tightly sealed to prevent water leaks.
- Install the boiler pump (not included) onto the 1-1/4" flange connections available on the Heating Return piping. Check the pump dimensions before installation for compatibility with the manifold.
- Install the rest of the piping system to the accessory. Water flow should travel from RIGHT to LEFT with the Heating Return entering the manifold from the right side and the Heating Supply exiting from the left. Attach the Heating Supply and Return system piping to the 1-1/2" main hot water pipe on the NFB-175/200 Series Manifold and provide sufficient weight support for the plumbing system. This accessory is also compatible with smaller pipe sizes based on BTU demand and flow rate requirements.
- Install any required accessories such as an air separator, expansion tank, check valve, etc. on the heating supply side as illustrated in **FIGURE 2** below.

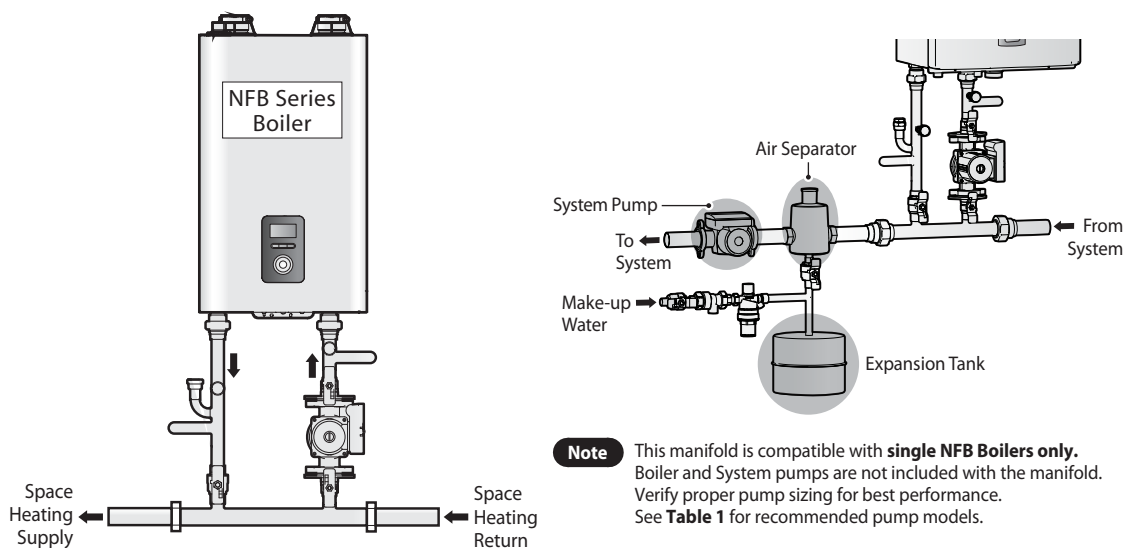


FIGURE 2: NFB-175/200 Series Manifold Piping Setup with Accessories

Pump Specifications

Model	Temp. Rise	Pump Model			
		Grundfos	Taco	Bell & Gossett	Armstrong
NFB-175	20°F	UPS26-99FC	0010-IFC or 0013-MSF1-IFC	NRF-36	E7
	25°F	UPS26-99FC	0010-IFC or 0015-MSF1-IFC	NRF-25	E7
	35°F	UPS15-58FC	005-IFC or 0015-MSF1-IFC	NRF-22	Astro 30
NFB-200	20°F	UPS26-99FC	0010-IFC or 0013-MSF1-IFC	NRF-36	E7
	25°F	UPS26-99FC	007-IFC or 0015-MSF1-IFC	NRF-36	E7
	35°F	UPS15-58FC	005-IFC or 0015-MSF1-IFC	NRF-22	Astro 30

TABLE 1: Recommended Pump Models with the NFB Manifold

MANIFOLD INSTALLATION (continued)

- Additional accessories such as relief valves, indirect hot water tanks, or temperature/pressure gauges can be installed onto the additional ports below (see **FIGURE 3**). Stub outs are provided for the direct connection of an indirect water heater. Refer to the NFB Installation and Operation Manual for accessory piping and wiring requirements.

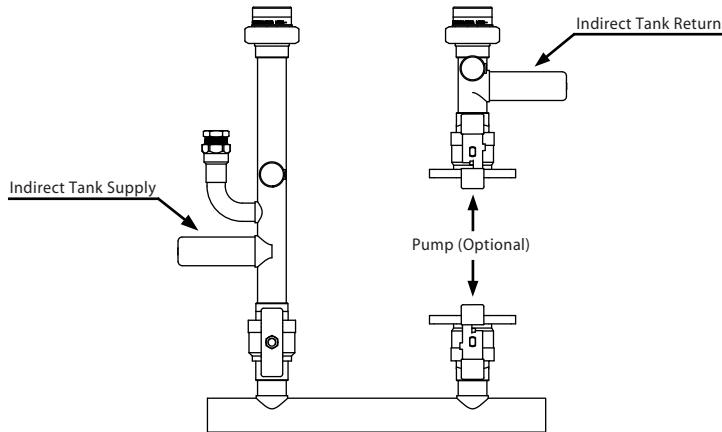


FIGURE 3: Available Ports on the NFB-175/200 Series Manifold

- Once all steps are completed, it is recommended to flush, purge, and fill the system in order to remove excess pipe debris. Check for any leaks from the piping before initial operation of the heating system.