

LEW ELECTRIC FITTINGS COMPANY



New Wireless Charging PUR: See page 4



New Color: Dark Bronze



Catalog #0219

Log on to
www.lewelectric.com
for complete line catalog and specifications

Table of Contents

Countertop

PUR Series	3-11
PUFP-CT Series	12-18

Residential Floor Boxes

PUFP Series	19-20
RCFB Series	21
Plastic Box Series	22-25
RRP Series	26-27
SWB Series	28-29
812 Series	30-31

Outdoor Boxes 32-33

PVC Floor Boxes

PVC Box and Accessories	34
Non-Metallic Covers	34
Metal Covers	35

Commercial Floor Boxes

Access Series	36-37
Rectangular Boxes	38-41
Round Boxes	42-43
Poke-Throughs	44-47
Nozzles	48-49

Desktop Boxes 50

Replacement Plugs 51



LEW ELECTRIC FITTINGS COMPANY
 »»» 4 GENERATIONS FAMILY OWNED AND OPERATED «««

Lew Electric is a fourth generation family owned and operated company. Our founder, Jake Lewin, was an electrical engineer and inventor. He designed and produced numerous patented products, the first being a slide connector for couplers, designed in 1930. He was an industry leader in creating the first floor boxes on the market and some of his designs are still used today. "LEW" was passed on to Jake's wife Lilly upon his death and today is owned and managed by Lilly's grandchildren and great grandchildren.



PUR Countertop Boxes



UCPDR-20-SS » see page 11



PUR20-BK-GFI-2USB » see page 5



PUR15-BK-2P » see page 9

FEATURES AND BENEFITS (pages 3-11)

- Includes 9-foot plugged cord and is not designed to be hardwired.
- For installation on **counters, desktops or under cabinets**
- For use in **kitchens, offices, labs**, etc.
- ETL listed** to UL standard 1363: relocatable power tap that passes Spill Test.
- Not to be used in outdoor "wet" locations. Indoor use only.
- Receptacles:** GFI - UL Listed E229322
2USB - UL Listed E491706

PUR Countertop Boxes – Wireless Charge

CATALOG #	DESCRIPTION	COVER DIAMETER	IN-USE HEIGHT	UNDER COUNTER DEPTH WHEN CLOSED
PUR15-RBK-2USB-QI ①	Wireless Charging Black resin pop up countertop plate with one 15 AMP (TR) duplex power/ 2USB receptacle	4 13/16"	6 1/2"	10"
PUR15-RSS-2USB-QI ①	Wireless Charging Stainless resin pop up countertop plate with one 15 AMP (TR) duplex power/ 2USB receptacle	4 13/16"	6 1/2"	10"
PUR15-RWT-2USB-QI ①	Wireless Charging White resin pop up countertop plate with one 15 AMP (TR) duplex power/ 2USB receptacle	4 13/16"	6 1/2"	10"
PUR20-RBK-GFI-2USB-QI ①	Wireless Charging Black resin pop up countertop plate with one 20 AMP GFI (TR) duplex receptacle and two usb charging ports	4 13/16"	7 5/8"	11 1/4"
PUR20-RSS-GFI-2USB-QI ①	Wireless Charging Stainless resin pop up countertop plate with one 20 AMP GFI (TR) duplex receptacle and two usb charging ports	4 13/16"	7 5/8"	11 1/4"
PUR20-RWT-GFI-2USB-QI ①	Wireless Charging White resin pop up countertop plate with one 20 AMP GFI (TR) duplex receptacle and two usb charging ports	4 13/16"	7 5/8"	11 1/4"

① In order for charging feature to activate, your mobile device must be wireless charging ready or equipped with a Qi compatible case or wireless charging receiver. Qi accessories for respective user mobile device not included.

PUR15-RBK-2USB-QI



U.S. Patent #10,084,337

PUR15-RSS-2USB-QI



INCLUDES 15 AMP POWER CORD

U.S. Patent #10,084,337



PUR15-RWT-2USB-QI



INCLUDES 15 AMP POWER CORD

U.S. Patent #10,084,337

PUR20-RBK-GFI-2USB-QI



INCLUDES 20 AMP POWER CORD

U.S. Patent #10,084,337

PUR20-RSS-GFI-2USB-QI



U.S. Patent #10,084,337

PUR20-RWT-GFI-2USB-QI



INCLUDES 20 AMP POWER CORD

U.S. Patent #10,084,337

PUR Countertop Boxes

CATALOG #	DESCRIPTION	COVER DIAMETER	IN-USE HEIGHT	UNDER COUNTER DEPTH WHEN CLOSED
PUR20-BK-GFI-2USB	Black pop up countertop plate with one 20 AMP GFI (TR) duplex receptacle and two usb charging ports	4 13/16"	7 5/8"	11 1/4"
PUR20-OW-GFI-2USB	Off-White pop up countertop plate with one 20 AMP GFI (TR) duplex receptacle and two usb charging ports	4 13/16"	7 5/8"	11 1/4"
PUR20-SS-GFI-2USB	Stainless Steel pop up countertop plate with one 20 AMP GFI (TR) duplex receptacle and two usb charging ports	4 13/16"	7 5/8"	11 1/4"

PUR20-BK-GFI-2USB



INCLUDES 20 AMP POWER CORD

PUR20-OW-GFI-2USB



INCLUDES 20 AMP POWER CORD

PUR20-SS-GFI-2USB



*Off-White color may vary slightly from photograph



*Off-White color may vary slightly from photograph

PUR Countertop Boxes

CATALOG #	DESCRIPTION	COVER DIAMETER	IN-USE HEIGHT	UNDER COUNTER DEPTH WHEN CLOSED
PUR15-B	Brass pop up countertop plate with one 15 AMP (TR) duplex power/ 2USB receptacle	4 13/16"	6 1/4"	9 1/4"
PUR15-BK	Black pop up countertop plate with one 15 AMP (TR) duplex power/ 2USB receptacle	4 13/16"	6 1/4"	9 1/4"
PUR15-DB	Dark Bronze pop up countertop plate with one 15 AMP (TR) duplex power/ 2USB receptacle	4 13/16"	6 1/4"	9 1/4"
PUR15-OW	Off-White pop up countertop plate with one 15 AMP (TR) duplex power/ 2USB receptacle	4 13/16"	6 1/4"	9 1/4"
PUR15-S	Stainless Steel pop up countertop plate with one 15 AMP (TR) duplex power/ 2USB receptacle	4 13/16"	6 1/4"	9 1/4"

PUR15-B



INCLUDES 15 AMP POWER CORD



PUR15-BK



INCLUDES 15 AMP POWER CORD

PUR15-DB



New Color: Dark Bronze

INCLUDES 15 AMP POWER CORD

PUR15-OW



*Off-White color may vary slightly from photograph

PUR15-S



INCLUDES 15 AMP POWER CORD

PUR Countertop Boxes

Available
 Summer 2019

CATALOG #	DESCRIPTION	COVER DIAMETER	IN-USE HEIGHT	UNDER COUNTER DEPTH WHEN CLOSED
PUR20-B-USB	Brass pop up countertop plate with one 20 AMP (TR) duplex power/ 2USB receptacle	4 13/16"	6 1/4"	9 1/4"
PUR20-BK-USB	Black pop up countertop plate with one 20 AMP (TR) duplex power/ 2USB receptacle	4 13/16"	6 1/4"	9 1/4"
PUR20-DB-USB	Dark Bronze pop up countertop plate with one 20 AMP (TR) duplex power/ 2USB receptacle	4 13/16"	6 1/4"	9 1/4"
PUR20-OW-USB	Off-White pop up countertop plate with one 20 AMP (TR) duplex power/ 2USB receptacle	4 13/16"	6 1/4"	9 1/4"
PUR20-S-USB	Stainless Steel pop up countertop plate with one 20 AMP (TR) duplex power/ 2USB receptacle	4 13/16"	6 1/4"	9 1/4"



PUR Countertop Boxes

CATALOG #	DESCRIPTION	COVER DIAMETER	IN-USE HEIGHT	UNDER COUNTER DEPTH WHEN CLOSED
PUR20-B	Brass pop up countertop plate with one 20 AMP GFI (TR) duplex receptacle	4 13/16"	5 5/8"	8 1/2"
PUR20-BK	Black pop up countertop plate with one 20 AMP GFI (TR) duplex receptacle	4 13/16"	5 5/8"	8 1/2"
PUR20-DB	Dark Bronze pop up countertop plate with one 20 AMP GFI (TR) duplex receptacle	4 13/16"	5 5/8"	8 1/2"
PUR20-NS	Nickel Silver pop up countertop plate with one 20 AMP GFI (TR) duplex receptacle	4 13/16"	5 5/8"	8 1/2"
PUR20-OW	Off-White pop up countertop plate with one 20 AMP GFI (TR) duplex receptacle	4 13/16"	5 5/8"	8 1/2"
PUR20-S	Stainless Steel pop up countertop plate with one 20 AMP GFI (TR) duplex receptacle	4 13/16"	5 5/8"	8 1/2"



*Off-White color may vary slightly from photograph

PUR Countertop Boxes

CATALOG #	DESCRIPTION	COVER DIAMETER	IN-USE HEIGHT	UNDER COUNTER DEPTH WHEN CLOSED
PUR15-BK-2P	Black pop up countertop plate with two 15 AMP (TR) duplex power/ 2USB receptacles	4 13/16"	10 3/4"	13 3/4"
PUR15-S-2P	Stainless Steel pop up countertop plate with two 15 AMP (TR) duplex receptacles	4 13/16"	10 3/4"	13 3/4"
THE FOLLOWING 6 ITEMS ARE SPECIAL ORDER ONLY, NON RETURNABLE AND REQUIRE 8-12 WEEKS FOR DELIVERY				
PUR-BK-PQ-6 ①	Black pop up countertop plate with 6 port Comm./Data device (max 3 CAT6 jacks)	4 13/16"	5 7/8"	8 1/2"
PUR-S-PQ-6 ①	Stainless Steel pop up countertop plate with 6 port Comm./Data device (max 3 CAT6 jacks)	4 13/16"	5 7/8"	8 1/2"
PUR-BK-1P1Q ①	Black pop up countertop plate with one 15 AMP (TR) duplex power/ 2USB receptacle & one 6 port Comm./Data device (max 3 CAT6 jacks)	4 13/16"	10 7/8"	13 1/2"
PUR-S-1P1Q ①	Stainless Steel pop up countertop plate with one 15 AMP (TR) duplex power/ 2USB receptacle & one 6 port Comm./Data device (max 3 CAT6 jacks)	4 13/16"	10 7/8"	13 1/2"
PUR-15-BK-PQ ①	Black pop up countertop plate with one 15 AMP (TR) duplex power/ 2USB receptacle & two Comm./Data openings	4 13/16"	9 1/2"	12"
PUR-15-S-PQ ①	Stainless Steel pop up countertop plate with one 15 AMP (TR) duplex power/ 2USB receptacle & two Comm./Data openings	4 13/16"	9 1/2"	12"

① Low volt connectors are included and prewired. Connector types must be specified at time of order.

<p>PUR15-BK-2P</p>  <p>INCLUDES 15 AMP POWER CORD</p>	<p>PUR15-S-2P</p> 	<p>PUR-BK-PQ-6 (SPECIAL ORDER)</p> 	<p>PUR-S-PQ-6 (SPECIAL ORDER)</p> 
<p>PUR-BK-1P1Q (SPECIAL ORDER)</p>  <p>INCLUDES 15 AMP POWER CORD</p>	<p>PUR-S-1P1Q (SPECIAL ORDER)</p>  <p>INCLUDES 15 AMP POWER CORD</p>	<p>PUR-15-BK-PQ (SPECIAL ORDER)</p>  <p>INCLUDES 15 AMP POWER CORD</p>	<p>PUR-15-S-PQ (SPECIAL ORDER)</p> 

Countertop

LEW ELECTRIC FITTINGS COMPANY
For more information, call 630-665-2075
www.lewelectric.com

10 >>>>> PUR Series | PUPF-CT Series



PUR Under Cabinet Pop Down Receptacle

CATALOG #	DESCRIPTION	COVER DIAMETER	IN-USE HEIGHT	HEIGHT INSIDE CABINET WHEN CLOSED
UCPDR-20-SS	Stainless Steel under cabinet pop down receptacle with one 20 AMP (TR) GFI receptacle	4 13/16"	4 3/4"	8 1/4"
UCPDR-20-SS-USB	Stainless Steel under cabinet pop down receptacle with one 20 AMP (TR) duplex power/ 2 USB receptacle	4 13/16"	5 2/5"	9"
UCPDR-20-SS-USB/GFI	Stainless Steel under cabinet pop down receptacle with one 20 AMP (TR) GFI receptacle and 2 USB ports	4 13/16"	6 1/2"	10"

UCPDR-20-SS



UCPDR-20-SS-USB



INCLUDES ONE FOOT 20 AMP POWER CORD

UCPDR-20-SS-USB/GFI



INCLUDES ONE FOOT 20 AMP POWER CORD





FEATURES & BENEFITS — PAGES 12-15

- UL recognized** 498, 514A, 943, 1059, and NEC 210.52(C).
CUL recognized 22.2 #'s 42, 158, and 18.1-04.
- Receptacles:** GFI - UL Listed E229322
2USB - UL Listed E491706
- Pops out** when in use
- Hides in the box** when not in use
- Complies with **2017 NEC code 406.5(E)**
for use in countertops
- For **residential or commercial** applications
- Scrub water tight** construction
- All PUPF styles supplied with **tamper resistant** receptacles



Conforms to UL STD.514A and 498;
Certified to CSA STD.C22.2.; No.18.1-04 and 42-M1984;
LEW ELECTRIC FITTINGS CO

PUPF Countertop Boxes (Corded 2017 NEC Compliant)

CATALOG #	DESCRIPTION
PUPF-CT-SS-WC	Stainless Steel pop up countertop box assembly, with 20 AMP (TR) GFI receptacle and 20 AMP power cord
PUPF-CT-SS-20A-2USB-WC ①	Stainless Steel pop up countertop box assembly, with 20 AMP (TR) duplex power/ 2USB receptacle and 20 AMP power cord
PUPF-CT-BK-WC	Black pop up countertop box assembly, with 20 AMP (TR) GFI receptacle and 20 AMP power cord
PUPF-CT-BK-20A-2USB-WC ①	Black pop up countertop box assembly, with 20 AMP (TR) duplex power/ 2USB receptacle and 20 AMP power cord

① Contains (2) USB port cover anti dust protectors

>>>> All countertop plates 4⁷/₈ W x 4³/₄ L x 3¹/₂ H and include PUPF-WB box

>>>> Features and Benefits, see page 12

PUPF-CT-SS-WC (Self-Testing GFCI Compliant)



PUPF-CT-SS-20A-2USB-WC



PUPF-CT-BK-WC (Self-Testing GFCI Compliant)



PUPF-CT-BK-20A-2USB-WC



PUFP Countertop Boxes (Corded 2017 NEC Compliant)

CATALOG #	DESCRIPTION
PUFP-CT-DB-WC	Dark Bronze pop up countertop box assembly, with 20 AMP (TR) GFI receptacle and 20 AMP power cord
PUFP-CT-DB-20A-2USB-WC ①	Dark Bronze pop up countertop box assembly, with 20 AMP (TR) duplex power/ 2USB receptacle and 20 AMP power cord
PUFP-CT-NS-WC	Nickel Plated pop up countertop box assembly, with 20 AMP (TR) GFI receptacle and 20 AMP power cord
PUFP-CT-NS-20A-2USB-WC ①	Nickel Plated pop up countertop box assembly, with 20 AMP (TR) duplex power/ 2USB receptacle and 20 AMP power cord

① Contains (2) USB port cover anti dust protectors

>>>> All countertop plates 4⁷/₈ W x 4³/₄ L x 3¹/₂ H and include PUF-WB box

>>>> Features and Benefits, see page 12



PUFP-CT-NS-WC (Self-Testing GFCI Compliant)



PUFP-CT-DB-WC (Self-Testing GFCI Compliant)

New Color: Dark Bronze



PUFP-CT-DB-20A-2USB-WC

New Color: Dark Bronze



PUFP-CT-NS-20A-2USB-WC



PUPF Countertop Boxes (Corded 2017 NEC Compliant)

CATALOG #	DESCRIPTION
PUPF-CT-OW-WC	Off-White pop up countertop box assembly, with 20 AMP (TR) GFI receptacle and 20 AMP power cord (Off-White color may vary slightly from photograph)
PUPF-CT-OW-20A-2USB-WC ①	Off-White pop up countertop box assembly, with 20 AMP (TR) duplex power/ 2USB receptacle and 20 AMP power cord (Off-White color may vary slightly from photograph)
PUPF-CT-B-WC	Brass pop up countertop box assembly, with 20 AMP (TR) GFI receptacle and 20 AMP power cord
PUPF-CT-B-20A-2USB-WC ①	Brass pop up countertop box assembly, with 20 AMP (TR) duplex power/ 2USB receptacle and 20 AMP power cord

① Contains (2) USB port cover anti dust protectors

>>>> All countertop plates 4 7/8 W x 4 3/4 L x 3 1/2 H and include PUPF-WB box

>>>> Features and Benefits, see page 12



*Off-White color may vary slightly from photograph



PUPF-CT-OW-WC (Self-Testing GFCI Compliant)

Available Summer 2019

*Off-White color may vary slightly from photograph



PUPF-CT-OW-20A-2USB-WC

Available Summer 2019

*Off-White color may vary slightly from photograph



PUPF-CT-B-WC (Self-Testing GFCI Compliant)

Available Summer 2019



PUPF-CT-B-20A-2USB-WC

Available Summer 2019



FEATURES & BENEFITS — PAGES 16-18

- UL recognized** 498, 514A, 943, 1059, and NEC 210.52(C). **CUL recognized** 22.2 #'s 42, 158, and 18.1-04.
- Receptacles:** GFI - UL Listed E229322
2USB - UL Listed E491706
- Pops out** when in use
- Hides in the box** when not in use
- For **residential or commercial** applications
- Complies with **2014 NEC code 406.5(E)** for use in countertops
- Scrub water tight** construction
- All PUPF styles supplied with **tamper resistant** receptacles



Conforms to UL STD.514A and 498;
Certified to CSA STD.C22.2;
No.18.1-04 and 42-M1984;
LEW ELECTRIC FITTINGS CO

PUPF Countertop Boxes (Non-Corded 2014 NEC Compliant)

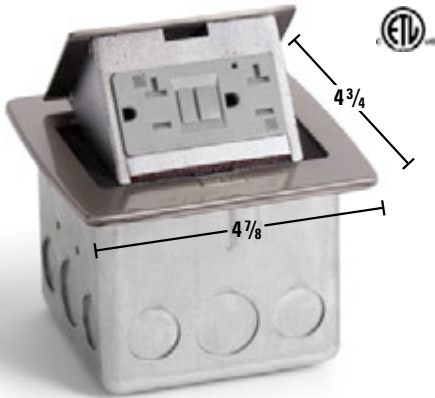
CATALOG #	DESCRIPTION
PUPF-CT-SS	Stainless Steel pop up countertop plate assembly, with 20 AMP (TR) GFI receptacle
PUPF-CT-SS-20A-2USB ①	Stainless Steel pop up countertop plate assembly, with 20 AMP (TR) duplex power/ 2USB receptacle
PUPF-CT-SS-6PORT	SPECIAL ORDER ONLY: Stainless Steel pop up countertop plate assembly, with 6 port Comm./Data device (max 3 CAT6 jacks)
PUPF-CT-BK	Black pop up countertop plate assembly, with 20 AMP (TR) GFI receptacle
PUPF-CT-BK-20A-2USB ①	Black pop up countertop plate assembly, with 20 AMP (TR) duplex power/ 2USB receptacle
PUPF-CT-DB	Dark Bronze pop up countertop plate assembly, with 20 AMP (TR) GFI receptacle
PUPF-CT-DB-20A-2USB ①	Dark Bronze pop up countertop plate assembly, with 20 AMP (TR) duplex power/ 2USB receptacle

① Contains (2) USB port cover anti dust protectors

>>>> All countertop plates 4⁷/₈ W x 4³/₄ L x 3¹/₂ H and include PUPF-WB box

>>>> Features and Benefits, see page 16

PUPF-CT-SS (Self-Testing GFCI Compliant)



PUPF-CT-SS-20A-2USB



PUPF-CT-SS-6PORT (SPECIAL ORDER)



PUPF-CT-BK (Self-Testing GFCI Compliant)



PUPF-CT-BK-20A-2USB



PUPF-CT-DB (Self-Testing GFCI Compliant)



New Color: Dark Bronze

PUPF-CT-DB-20A-2USB



New Color: Dark Bronze



PUFP Countertop Boxes (Non-Corded 2014 NEC Compliant)

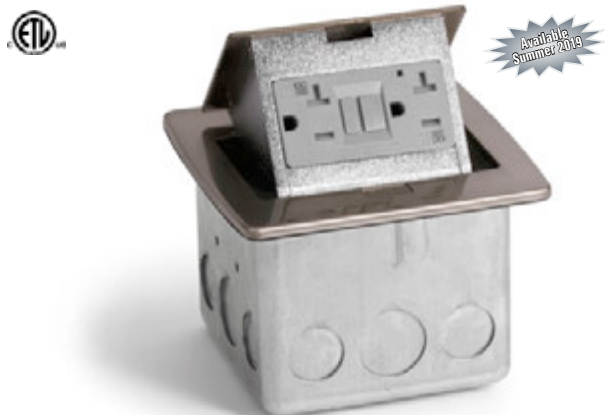
CATALOG #	DESCRIPTION
PUFP-CT-NS	Nickel Plated pop up countertop plate assembly, with 20 AMP (TR) GFI receptacle
PUFP-CT-NS-20A-2USB ①	Nickel Plated pop up countertop plate assembly, with 20 AMP (TR) duplex power/ 2USB receptacle
PUFP-CT-WT	White pop up countertop plate assembly, with 20 AMP (TR) GFI receptacle (White color may vary slightly from photograph)
PUFP-CT-WT-20A-2USB ①	White pop up countertop plate assembly, with 20 AMP (TR) duplex power/ 2USB receptacle (White color may vary slightly from photograph)
PUFP-CT-B	Brass pop up countertop plate assembly, with 20 AMP (TR) GFI receptacle
PUFP-CT-B-20A-2USB ①	Brass pop up countertop plate assembly, with 20 AMP (TR) duplex power/ 2USB receptacle

① Contains (2) USB port cover anti dust protectors

>>>> All countertop plates 4 7/8 W x 4 3/4 L x 3 1/2 H and include PUF-WB box

>>>> Features and Benefits, see page 16

PUFP-CT-NS (Self-Testing GFCI Compliant)



PUFP-CT-NS-20A-2USB



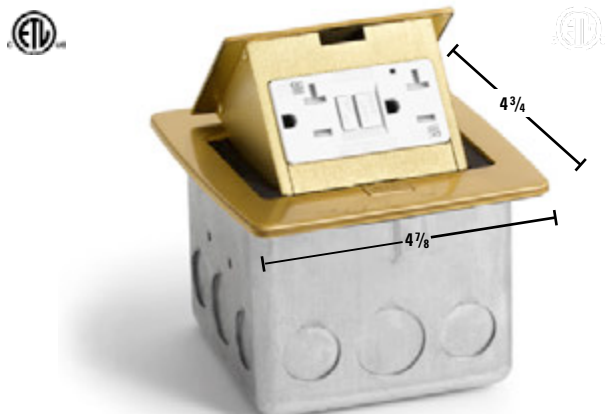
PUFP-CT-WT (Self-Testing GFCI Compliant)



PUFP-CT-WT-20A-2USB



PUFP-CT-B (Self-Testing GFCI Compliant)



PUFP-CT-B-20A-2USB



PUFP Square Floor Boxes

CATALOG #	DESCRIPTION
PUFP-SQ-BR	Brass pop up floor plate assembly, with 15 AMP (TR) duplex power receptacle
PUFP-SQ-BR-GFI	Brass pop up floor plate assembly, with 20 AMP (TR) GFI receptacle
PUFP-SQ-BR-USB	Brass pop up floor plate assembly, with 15 AMP (TR) duplex power/ 2USB receptacle
PUFP-SQ-SS	Stainless Steel pop up floor plate assembly, with 15 AMP (TR) duplex power receptacle
PUFP-SQ-SS-GFI	Stainless Steel pop up floor plate assembly, with 20 AMP (TR) GFI receptacle
PUFP-SQ-SS-USB	Stainless Steel pop up floor plate assembly, with 15 AMP (TR) duplex power/ 2USB receptacle

>>>> All floor plates 4³/₄ W x 4³/₄ L x 3⁵/₈ H and include PUFP-WB box



FEATURES & BENEFITS

- UL recognized** 498, 514A, 943, 1059, and NEC 210.52(C). **CUL recognized** 22.2 #'s 42, 158, and 18.1-04.
- Receptacles:** GFI - UL Listed E229322
2USB - UL Listed E491706
- All PUFP styles supplied with **tamper resistant** receptacles
- Pops out** when in use
- Hides in the box** when not in use
- For **residential or commercial** applications
- Installs in **wood floors**
- Scrub water tight** construction



Conforms to UL STD.514A and 498;
 Certified to CSA STD.C22.2.; No.18.1-04 and
 42-M1984; LEW ELECTRIC FITTINGS CO

PUFP Covers and Boxes

CATALOG #	DESCRIPTION
PUFP-B	6" Brass pop up floor plate with 15 AMP (TR) GFI receptacle
PUFP-BC	6" Brass pop up floor plate with 6 port Comm./Data device (max 3 CAT6 jacks)
PUFP-BD	6" Brass pop up floor plate with 15 AMP (TR) decora receptacle
PUFP-S	6" Stainless Steel pop up floor plate with 15 AMP (TR) GFI receptacle
PUFP-SC	6" Stainless Steel pop up floor plate with 6 port Comm./Data device (max 3 CAT6 jacks)
PUFP-SD	6" Stainless Steel pop up floor plate with 15 AMP (TR) decora receptacle
PUFP-LRA	Leveling ring for PUFP plates

CATALOG #	DESCRIPTION	DIMENSIONS	
		A (WIDTH)	B (HEIGHT)
PUFP-HB	Concrete box for PUFP plates	4 5/16"	3 1/4"
PUFP-WB	Wood floor box for PUFP plates	3 7/8"	3 1/8"
FB	PVC floor box (must use in conjunction with PUFP-LRA to mount cover); box UL listed #514C	5"	6"

PUFP-B



PUFP-BC



PUFP-BD



FEATURES & BENEFITS

- UL recognized** 498, 514A, 943, 1059, and NEC 210.52(C).
CUL recognized 22.2 #'s 42, 158, and 18.1-04.
- Pops out** when in use
- Hides in the box** when not in use
- For **residential or commercial** applications
- Installs in **concrete or wood** floors
- Scrub water tight** construction
- All PUFP style supplied with **tamper resistant** receptacles

PUFP-S



PUFP-SC



PUFP-SD



Conforms to UL STD.514A and 498;
Certified to CSA STD.C22.2.; No.18.1-04 and
42-M1984; LEW ELECTRIC FITTINGS CO

PUFP-LRA



PUFP-HB



PUFP-WB



FB

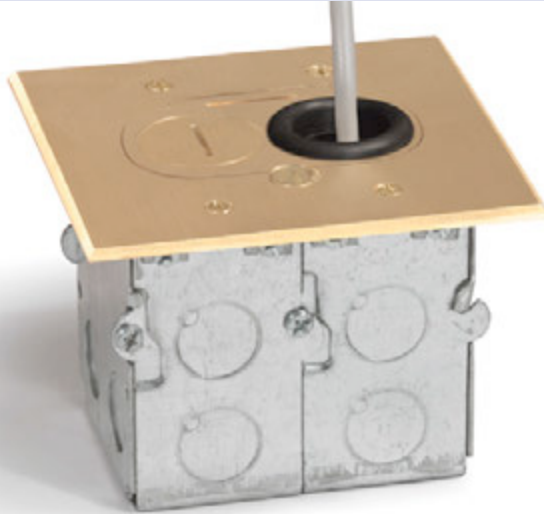


RCFB Boxes and Covers (Subfloor installation)

»»»» For Replacement Plugs, see page 51

RCFB-1

RCFB-1: Recessed hybrid one gang floor box



Width	5"	Height	4"
Length	5"	Interior Capacity	36 Cu. In.

Finish Options

 Brass » RCFB-1	 Aluminum » RCFB-1-A	 New color » RCFB-1-DBP <small>Available Summer 2015</small>
--	---	--

REPLACEMENT COVER FOR RCFB-1



Replacement Cover

 Brass » RCFB-1-BP	 Aluminum » RCFB-1-AP
 New color » RCFB-1-DBP <small>Available Summer 2015</small>	

RCFB-2

RCFB-2: Recessed hybrid two gang floor box



Width	5 1/16"	Height	4"
Length	8 5/8"	Interior Capacity	72 Cu. In.

Finish Options

 Brass » RCFB-2	 Aluminum » RCFB-2-A	 New color » RCFB-2-DBP <small>Available Summer 2015</small>
--	---	--

REPLACEMENT COVER FOR RCFB-2



Replacement Cover

 Brass » RCFB-2-BP	 Aluminum » RCFB-2-AP
 New color » RCFB-2-DBP <small>Available Summer 2015</small>	

RCFB-1 & RCFB-2: UL & NEMA

- Box UL #E345966
- Tamper resistant receptacle UL #E333616 (duplex)

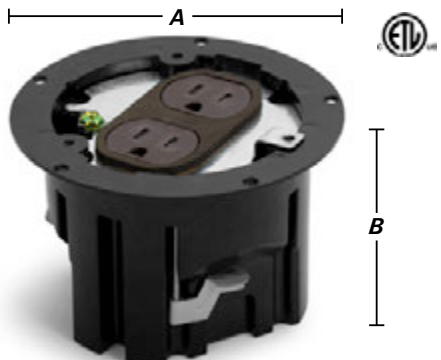








RCFB-1 & RCFB-2: BENEFITS

- Water tight close up plugs
- Rubber grommets provided for wire protection

Plastic Boxes and Covers (Finished floor installation)

CATALOG #	DESCRIPTION	DIMENSIONS		INTERIOR CAPACITY
		A	B	
PBR-1	Round plastic box with 15 AMP (TR) duplex receptacle included	4 3/8"	3 1/8"	20 Cu. In.
PBR1-FPA	Round plastic box kit with PBR-FPA Aluminum flip cover & 15 AMP (TR) receptacle	5 1/16"	3 1/4"	20 Cu. In.
PBR-FPA	Aluminum flip cover for PBR-1	Diameter: 5 1/16"		
PBR1-FPB	Round plastic box kit with PBR-FPB Brass flip cover & 15 AMP (TR) receptacle	5 1/16"	3 1/4"	20 Cu. In.
PBR-FPB	Brass flip cover for PBR-1	Diameter: 5 1/16"		
PBR1-FPDB (SUMMER 2019)	Round plastic box kit with PBR-FPDB Dark Bronze flip cover & 15 AMP (TR) receptacle	5 1/16"	3 1/4"	20 Cu. In.
PBR-FPDB (SUMMER 2019)	Dark Bronze flip cover for PBR-1	Diameter: 5 1/16"		
PBR1-SPA	Round plastic box kit with PBR-SPA Aluminum screw cover & 15 AMP (TR) receptacle	5 1/16"	3 1/4"	20 Cu. In.
PBR-SPA	Aluminum screw cover for PBR-1	Diameter: 5 1/16"		
PBR1-SPB	Round plastic box kit with PBR-SPB Brass screw cover & 15 AMP (TR) receptacle	5 1/16"	3 1/4"	20 Cu. In.
PBR-SPB	Brass screw cover for PBR-1	Diameter: 5 1/16"		
PBR1-SPDB (SUMMER 2019)	Round plastic box kit with PBR-SPDB Dark Bronze screw cover & 15 AMP (TR) receptacle	5 1/16"	3 1/4"	20 Cu. In.
PBR-SPDB (SUMMER 2019)	Dark Bronze screw cover for PBR-1	Diameter: 5 1/16"		

>>>> For Replacement Plugs, see page 51

<p>PBR-1</p> 	<p>FEATURES & BENEFITS</p> <ul style="list-style-type: none"> <input type="checkbox"/> Lightweight polymer construction <input type="checkbox"/> Options include choice of covers (aluminum, brass or dark bronze) and (flip lid or screw plug style) <input type="checkbox"/> Economical savings over cast iron & stamped metal floor box assemblies <input type="checkbox"/> Ease of installation <input type="checkbox"/> Adjustable wing clamps for added installation support <p>Finished floor installation</p> <div style="border: 1px solid black; padding: 5px; width: fit-content;">  <p>Intertek 4004534</p> <ul style="list-style-type: none"> <input type="checkbox"/> Conforms to UL514C <input type="checkbox"/> ETL listing #4004534 </div>	
<p>PBR1-FPA</p>  <p>PBR-FPA Replacement cover</p>	<p>PBR1-FPB</p>  <p>PBR-FPB Replacement cover</p>	<p>PBR1-FPDB</p>  <p>PBR-FPDB Replacement cover</p> <p>New Color: Dark Bronze</p> <p>Available Summer 2019</p>
<p>PBR1-SPA</p>  <p>PBR-SPA Replacement cover</p>	<p>PBR1-SPB</p>  <p>PBR-SPB Replacement cover</p>	<p>PBR1-SPDB</p>  <p>PBR-SPDB Replacement cover</p> <p>New Color: Dark Bronze</p> <p>Available Summer 2019</p>

Plastic Boxes and Covers (Finished floor installation)

CATALOG #	DESCRIPTION	DIMENSIONS			INTERIOR CAPACITY
		L	W	H	
1101-PB	Single gang plastic box with 15 AMP (TR) duplex receptacle included	4 3/4"	3 1/8"	3 3/8"	22.5 Cu. In.
PB1-FPA	Single gang plastic box kit with RRP-2-FPA Aluminum flip cover & 15 AMP (TR) receptacle	5 1/8"	3 1/2"	3 5/8"	22.5 Cu. In.
RRP-2-FPA	Aluminum flip cover for 1101-PB	5 1/8"	3 1/2"		
PB1-FPB	Single gang plastic box kit with RRP-2-FPB Brass flip cover & 15 AMP (TR) receptacle	5 1/8"	3 1/2"	3 5/8"	22.5 Cu. In.
RRP-2-FPB	Brass flip cover for 1101-PB	5 1/8"	3 1/2"		
PB1-SPA	Single gang plastic box kit with RRP-2-SPA Aluminum screw cover & 15 AMP (TR) receptacle	5 1/8"	3 1/2"	3 5/8"	22.5 Cu. In.
RRP-2-SPA	Aluminum screw cover for 1101-PB	5 1/8"	3 1/2"		
PB1-SPB	Single gang plastic box kit with RRP-2-SPB Brass screw cover & 15 AMP (TR) receptacle	5 1/8"	3 1/2"	3 5/8"	22.5 Cu. In.
RRP-2-SPB	Brass screw cover for 1101-PB	5 1/8"	3 1/2"		

»»»» For Replacement Plugs, see page 51

1101-PB



FEATURES & BENEFITS

- Lightweight** polymer construction
- Options include **choice of covers** (aluminum or brass) and (flip lid or screw plug style)
- Economical savings** over cast iron & stamped metal floor box assemblies
- Ease of installation**
- Adjustable wing clamps** for added installation support



- Conforms to UL514C**
- ETL listing #4004534**

Finished floor installation



PB1-FPA



RRP-2-FPA
Replacement cover



PB1-FPB



RRP-2-FPB
Replacement cover



PB1-SPA



RRP-2-SPA
Replacement cover



PB1-SPB



RRP-2-SPB
Replacement cover



Plastic Boxes and Covers (Finished floor installation)

CATALOG #	DESCRIPTION	DIMENSIONS			INTERIOR CAPACITY
		L	W	H	
1102-PB	Two gang plastic box with (2) 15 AMP (TR) duplex receptacles included	4 3/4"	4 3/4"	3 5/8"	45 Cu. In.
PB2-FPA ①	Two gang plastic box kit with RRP-4-FPA Aluminum flip cover & 2 15 AMP (TR) receptacles	5"	5"	3 5/8"	45 Cu. In.
RRP-4-FPA	Aluminum flip cover for 1102-PB	5"	5"		
PB2-FPB ①	Two gang plastic box kit with RRP-4-FPB Brass flip cover & 2 15 AMP (TR) receptacles	5"	5"	3 5/8"	45 Cu. In.
RRP-4-FPB	Brass flip cover for 1102-PB	5"	5"		
PB2-SPA ①	Two gang plastic box kit with RRP-4-SPA Aluminum screw cover & 2 15 AMP (TR) receptacles	5"	5"	3 5/8"	45 Cu. In.
RRP-4-SPA	Aluminum screw cover for 1102-PB	5"	5"		
PB2-SPB ①	Two gang plastic box kit with RRP-4-SPB Brass flip cover & 2 15 AMP (TR) receptacles	5"	5"	3 5/8"	45 Cu. In.
RRP-4-SPB	Brass screw cover for 1102-PB	5"	5"		

① also includes one RRP-2-PQ quad port

>>>> For Replacement Plugs, see page 51

1102-PB



FEATURES & BENEFITS

- Lightweight** polymer construction
- Options include **choice of covers** (aluminum or brass) and (flip lid or screw plug style)
- Economical savings** over cast iron & stamped metal floor box assemblies
- Ease of installation**
- Adjustable wing clamps** for added installation support



Intertek
4004534

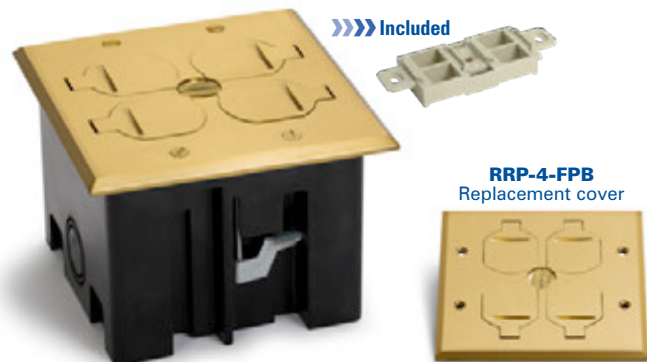
- Conforms to UL514C**
- ETL listing #4004534**

Finished floor installation

PB2-FPA (Includes RRP-2-PQ Quad Port, max 2 CAT6 jacks)



PB2-FPB (Includes RRP-2-PQ Quad Port, max 2 CAT6 jacks)



PB2-SPA (Includes RRP-2-PQ Quad Port, max 2 CAT6 jacks)



PB2-SPB (Includes RRP-2-PQ Quad Port, max 2 CAT6 jacks)



Plastic Boxes and Covers (Finished floor installation)

CATALOG #	DESCRIPTION	DIMENSIONS			INTERIOR CAPACITY
		L	W	H	
1103-PB	Three gang plastic box with (3) 15 AMP (TR) duplex receptacles included	4 3/4"	6 5/8"	3 3/8"	64 Cu. In.
PB3-FPA ①	Three gang plastic box kit with RRP-6-FPA Aluminum flip cover & 3 15 AMP (TR) receptacles	5 1/8"	6 15/16"	3 5/8"	64 Cu. In.
RRP-6-FPA	Aluminum flip cover for 1103-PB	5 1/8"	6 15/16"		
PB3-FPB ①	Three gang plastic box kit with RRP-6-FPB Brass flip cover & 3 15 AMP (TR) receptacles	5 1/8"	6 15/16"	3 5/8"	64 Cu. In.
RRP-6-FPB	Brass flip cover for 1103-PB	5 1/8"	6 15/16"		
PB3-SPA ①	Three gang plastic box kit with RRP-6-SPA Aluminum screw cover & 3 15 AMP (TR) receptacles	5 1/8"	6 15/16"	3 5/8"	64 Cu. In.
RRP-6-SPA	Aluminum screw cover for 1103-PB	5 1/8"	6 15/16"		
PB3-SPB ①	Three gang plastic box kit with RRP-6-SPB Brass flip cover & 3 15 AMP (TR) receptacles	5 1/8"	6 15/16"	3 5/8"	64 Cu. In.
RRP-6-SPB	Brass screw cover for 1103-PB	5 1/8"	6 15/16"		

① also includes one RRP-2-PQ quad port

>>>> For Replacement Plugs, see page 51

1103-PB

FEATURES & BENEFITS



- Lightweight** polymer construction
- Options include **choice of covers** (aluminum or brass) and (flip lid or screw plug style)
- Economical savings** over cast iron & stamped metal floor box assemblies
- Ease of installation**
- Adjustable wing clamps** for added installation support



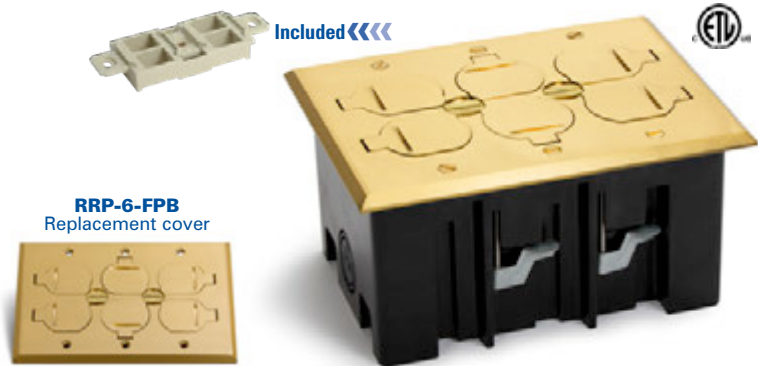
Intertek
4004534

- Conforms to UL514C**
- ETL listing #4004534**

Finished floor installation

PB3-FPA (Includes RRP-2-PQ Quad Port, max 2 CAT6 jacks)

PB3-FPB (Includes RRP-2-PQ Quad Port, max 2 CAT6 jacks)



PB3-SPA (Includes RRP-2-PQ Quad Port, max 2 CAT6 jacks)

PB3-SPB (Includes RRP-2-PQ Quad Port, max 2 CAT6 jacks)



Residential Floor Boxes

LEW ELECTRIC FITTINGS COMPANY
For more information, call 630-665-2075
www.lewelectric.com

26 >>>>> PUPF Series | RCFB Series | Plastic Box Series | RRP Series | SWB Series | 812 Series

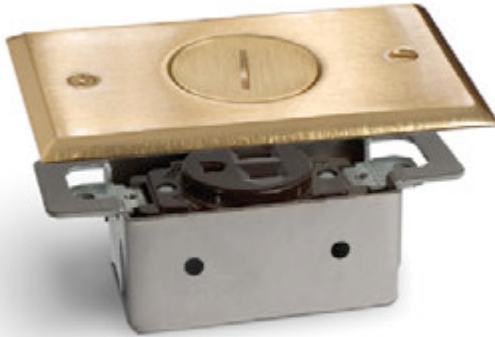


RRP Boxes and Covers (Subfloor installation)

>>>> For Replacement Plugs, see page 51

RRP-1-BP

RRP-1-BP: Plated recessed floor plate assembly (single receptacle); includes 15 AMP (TR) receptacle



Width 2 13/16"

Length 4 5/8"

Finish Options

Brass Plated » RRP-1-BP

Nickel Plated » RRP-1-NP

Replacement Cover



Brass Plated » RRP-1-BPR



Nickel Plated » RRP-1-NPR

RRP-2

RRP-2: Recessed floor plate assembly (duplex receptacle); includes 15 AMP (TR) receptacle



Width 2 7/8"

Length 5"

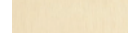
Finish Options

Brass » RRP-2

Aluminum » RRP-2-A

Nickel Silver » RRP-2-NS

Replacement Cover



Brass » RRP-2-BR



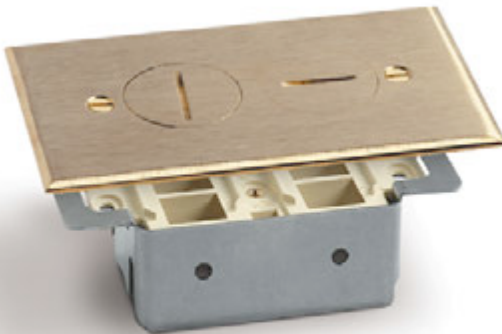
Aluminum » RRP-2-AR



Nickel Silver » RRP-2-NSR

RRP-2-T

RRP-2-T: Recessed floor plate assembly (duplex Comm./Data); RRP-2-PQ quad port included



Width 2 7/8"

Length 5"

Finish Options

Brass » RRP-2-T

Aluminum » RRP-2-A-T

Nickel Silver » RRP-2-NS-T

Replacement Cover



Brass » RRP-2-BR



Aluminum » RRP-2-AR



Nickel Silver » RRP-2-NSR

RRP-2-LR

RRP-2-LR: Recessed floor plate flip lid assembly (duplex receptacle); includes 15 AMP (TR) receptacle



Width 2 7/8"

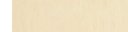
Length 5"

Finish Options

Brass » RRP-2-LR

Aluminum » RRP-2-LR-A

Replacement Cover



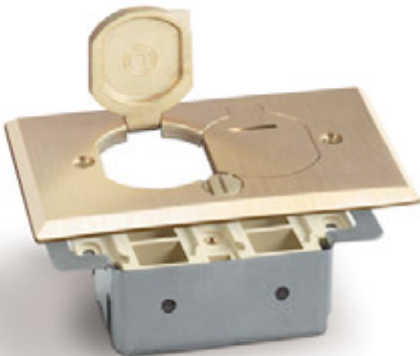
Brass » RRP-2-LRR



Aluminum » RRP-2-LR-AR

RRP-2-LR-T

RRP-2-LR-T: Recessed floor plate flip lid assembly (duplex Comm./Data); RRP-2-PQ quad port included



Width 2 7/8"

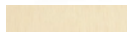
Length 5"

Finish Options

Brass » RRP-2-LR-T

Aluminum » RRP-2-LR-A-T

Replacement Cover



Brass » RRP-2-LRR



Aluminum » RRP-2-LR-AR

RRP: UL & NEMA RECOGNITION

- Meets NEMA WD1-1983 heavy duty requirement for display receptacle
- All receptacles tamper resistant; UL listing #E333616 (duplex); E237396 (single)

RRP: FEATURES & BENEFITS

- Fits any manufacturer's 3 1/2" deep switch box
- Receptacle with neoprene gasket included
- Water tight assembly
- Adjustable up to 3/4" to accommodate any floor

Subfloor installation

SWB Boxes and Covers (Subfloor installation)

>>>> For Replacement Plugs, see page 51

SWB-1-BP

SWB-1-BP: Plated recessed floor plate assembly (single receptacle with box); includes 15 AMP (TR) receptacle. **Interior capacity: 18 Cu. In.**



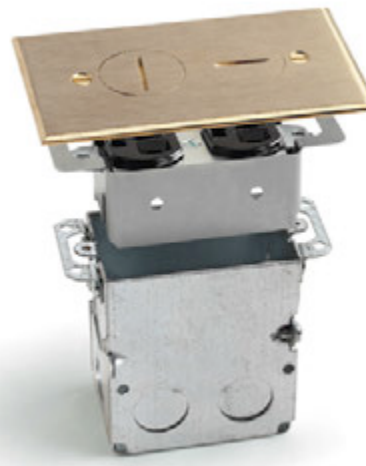
Width	2 13/16"	Finish Options
Length	4 5/8"	Brass Plated » SWB-1-BP
Height	4"	Nickel Plated » SWB-1-NP

Replacement Cover

Brass Plated » RRP-1-BPR
Nickel Plated » RRP-1-NPR

SWB-2

SWB-2: Recessed floor plate assembly (duplex receptacle with box); includes 15 AMP (TR) receptacle. **Interior capacity: 18 Cu. In.**



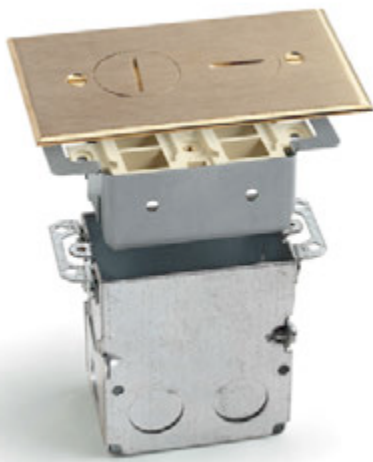
Width	2 7/8"	Finish Options
Length	5"	Brass » SWB-2
Height	4"	Aluminum » SWB-2-A
		Nickel Silver » SWB-2-NS

Replacement Cover

Brass » RRP-2-BR
Aluminum » RRP-2-AR
Nickel Silver » RRP-2-NSR

SWB-2-T

SWB-2-T: Recessed floor plate assembly (Comm./Data with box); RRP-2-PQ quad port included. **Interior capacity: 18 Cu. In.**



Width	2 7/8"	Finish Options
Length	5"	Brass » SWB-2-T
Height	4"	Aluminum » SWB-2-A-T
		Nickel Silver » SWB-2-NS-T

Replacement Cover

Brass » RRP-2-BR
Aluminum » RRP-2-AR
Nickel Silver » RRP-2-NSR

SWB-2-LR

SWB-2-LR: Recessed floor plate flip lid assembly (duplex receptacle with box); includes 15 AMP (TR) receptacle. **Interior capacity: 18 Cu. In.**



Width	2 7/8"	Finish Options
Length	5"	Brass » SWB-2-LR
Height	4"	Aluminum » SWB-2-LR-A

Replacement Cover

Brass » RRP-2-LRR
Aluminum » RRP-2-LR-AR

SWB-2-LR-T

SWB-2-LR-T: Recessed floor plate flip lid assembly (Comm./Data with box); RRP-2-PQ quad port included. **Interior capacity: 18 Cu. In.**



Width	2 7/8"	Finish Options
Length	5"	Brass » SWB-2-LR-T
Height	4"	Aluminum » SWB-2-LR-A-T

Replacement Cover

Brass » RRP-2-LRR
Aluminum » RRP-2-LR-AR

SWB: UL & NEMA RECOGNITION

- Box UL #E345966
- Meets NEMA WD1-1983 heavy duty requirement for display receptacle
- All receptacles tamper resistant; UL listing #E333616 (duplex); E237396 (single)

SWB: FEATURES & BENEFITS

- Water tight assembly
- 1/2" Conduit knockouts
- Adjustable** up to 3/4" to accommodate any floor

Subfloor installation

SWB Boxes and Covers (Subfloor installation)

>>>> For Replacement Plugs, see page 51

SWB-4

SWB-4: Two gang, divided, recessed floor plate assembly with screw plug cover. Includes 2 15 AMP (TR) receptacles. One RRP-2-PQ quad port also included.



Width
5"
Length
5"
Height
4"

Finish Options

Brass » SWB-4
 Aluminum » SWB-4-A

Replacement Cover

Brass » RRP-4-BP
 Aluminum » RRP-4-AP

Included <<<<

SWB-4-LR

SWB-4-LR: Two gang, divided, recessed floor plate assembly with flip lid cover. Includes 2 15 AMP (TR) receptacles. One RRP-2-PQ quad port also included.



Width
5"
Length
5"
Height
4"

Finish Options

Brass » SWB-4-LR
 Aluminum » SWB-4-LR-A

Replacement Cover

Brass » RRP-4-BP-LR
 Aluminum » RRP-4-AP-LR

Included <<<<

SWB-6

SWB-6: Three gang, divided, recessed floor plate assembly with screw plug cover. Includes 3 15 AMP (TR) receptacles. One RRP-2-PQ quad port also included.



Width
5"
Length
6 7/8"
Height
4"

Finish Options

Brass » SWB-6
 Aluminum » SWB-6-A

Replacement Cover

Brass » RRP-6-BP
 Aluminum » RRP-6-AP

>>>> Included

SWB-6-LR

SWB-6-LR: Three gang, divided, recessed floor plate assembly with flip lid cover. Includes 3 15 AMP (TR) receptacles. One RRP-2-PQ quad port also included.



Width
5"
Length
6 7/8"
Height
4"

Finish Options

Brass » SWB-6-LR
 Aluminum » SWB-6-LR-A

Replacement Cover

Brass » RRP-6-BP-LR
 Aluminum » RRP-6-AP-LR

>>>> Included

SWB-4 & SWB-6: UL & NEMA RECOGNITION

- Box UL #E345966
- Meets NEMA WD1-1983 heavy duty requirement for display receptacle
- All receptacles tamper resistant; UL listing #E333616 (duplex); E237396 (single)

SWB-4 & SWB-6: FEATURES & BENEFITS

- Water tight assembly
- 1/2" Conduit knockouts
- Adjustable** up to 3/4" to accommodate any floor

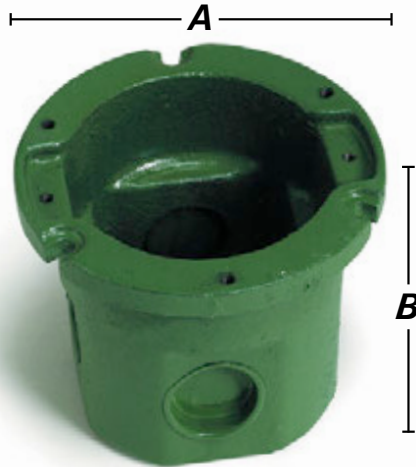
Subfloor installation

812 Boxes

>>>> 812 Series UL listing #514A,
#498 and CUL recognized 22.2 #18.1-04
>>>> UL listed receptacle #E333616
>>>> For Replacement Plugs, see page 51

812

812: Cast iron round floor box with duplex receptacle (Does not include cover)



Width (A)
4"

Height (B)
3"

Conduit Openings
Sides (2)- $\frac{3}{4}$ " & (2)- $\frac{1}{2}$ "
Bottom (2)- $\frac{1}{2}$ "

Interior Capacity
14.5 Cu. In.

812-DFB

812-DFB: Floor box furnished with 523-DP Cover & 15 AMP (TR) duplex receptacle




Width (A)
4"


Height (B)
3 $\frac{1}{8}$ "

Conduit Openings
Sides (2)- $\frac{3}{4}$ " & (2)- $\frac{1}{2}$ "
Bottom (2)- $\frac{1}{2}$ "

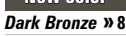
Interior Capacity
14.5 Cu. In.


Finish Options

 **Brass** » 812-DFB

 **Aluminum** » 812-DFB-A

New color

 **Dark Bronze** » 812-DFB-DB

 **Nickel Silver** » 812-DFB-NS

812-DFB-W/524

812-DFB-W/524: Floor box furnished with 524 Brass Cover and tel. jack



Width (A)
4"

Height (B)
3 $\frac{1}{8}$ "

Conduit Openings
Sides (2)- $\frac{3}{4}$ " & (2)- $\frac{1}{2}$ "
Bottom (2)- $\frac{1}{2}$ "

Interior Capacity
14.5 Cu. In.

Includes: 40201-001 – Ivory telephone jack for 812 series



Finish Options

 **Brass** » 812-DFB-W/524

812-DFB-LR

812-DFB-LR: Floor box furnished with DFB-LR Cover & 15 AMP (TR) duplex receptacle




Width (A)
4"


Height (B)
3 $\frac{1}{8}$ "

Conduit Openings
Sides (2)- $\frac{3}{4}$ " & (2)- $\frac{1}{2}$ "
Bottom (2)- $\frac{1}{2}$ "

Interior Capacity
14.5 Cu. In.

Finish Options

 **Brass** » 812-DFB-LR

 **Aluminum** » 812-DFB-LR-A

812-DFB-W/DFB-1

812-DFB-W/DFB-1: Floor box furnished with DFB-1 Cover & 15 AMP (TR) duplex receptacle



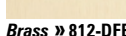
Width (A)
4"


Height (B)
3 $\frac{1}{8}$ "

Conduit Openings
Sides (2)- $\frac{3}{4}$ " & (2)- $\frac{1}{2}$ "
Bottom (2)- $\frac{1}{2}$ "

Interior Capacity
14.5 Cu. In.

Finish Options

 **Brass** » 812-DFB-W/DFB-1

 **Aluminum** » 812-DFB-W/DFB-1-A

812 Covers and Flanges

>>>> Marked cULus are UL listed 498
 >>>> For Replacement Plugs, see page 51

523-DP

523-DP: 4" cover (1/8" thick) with (2) 1 1/2" screw plugs for duplex



Finish Options

 cULus	 cULus
Brass » 523-DP	Aluminum » 523-DP-A
New color	 cULus
Dark Bronze » 523-DP-DB	Nickel Silver » 523-DP-NS

524

524: 4" cover (1/8" thick) with 2"–1/2" combo plug for Comm./Data

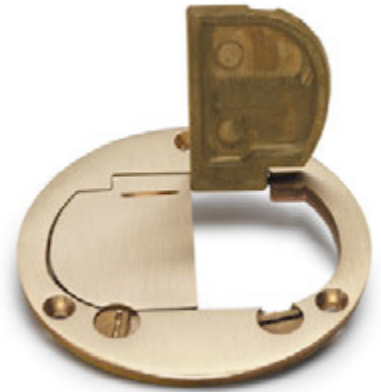


Finish Options

 cULus
Brass » 524

DFB-LR

DFB-LR: 4" dual hinged cover (1/4" thick) for duplex



Finish Options

 cULus	
Brass » DFB-LR	Aluminum » DFB-LR-A

DFB-1

DFB-1: 4" hinged cover (1/4" thick) for duplex



Finish Options


 cULus	
Brass » DFB-1	Aluminum » DFB-1-A

SCF-1

SCF-1: 5 1/4" flange



Finish Options

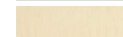

	
Brass » SCF-1	Aluminum » SCF-1-A
	 Available separately
Clear Plastic » SCF-1-CP	Nickel Silver » SCF-1-NS

TCP-1

TCP-1: 5 3/4" flanged cover, with 2"–1/2" combo plug for Comm./Data. or single receptacle



Finish Options

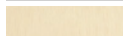


 cULus	
Brass » TCP-1	Nickel Silver » TCP-1-NS
Brass » TCP-1-3/4"	
Brass » TCP-1-1"	

TCP-2

TCP-2: 5 3/4" flanged cover, with (2) 1 1/2" screw plugs for duplex power or Comm./Data



Finish Options

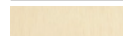

 cULus	 cULus
Brass » TCP-2	Aluminum » TCP-2-A
New color	
Dark Bronze » TCP-2-DB	Nickel Silver » TCP-2-NS

TCP-2-LR

TCP-2-LR: 5 3/4" Seamless flanged cover, with dual flip lid and duplex mounting plate

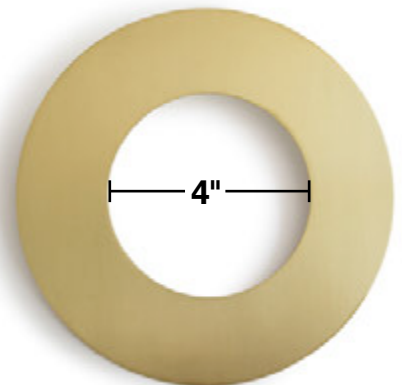


Finish Options

 cULus	 cULus
Brass » TCP-2-LR	Aluminum » TCP-2-LR-A
New color	
Dark Bronze » TCP-2-LR-DB	

TCP-GR1

TCP-GR1: Brass goof ring for the 812 series; O.D. 7 1/2", I.D. 4"



Outdoor Boxes

LEW ELECTRIC FITTINGS COMPANY
For more information, call 630-665-2075
www.lewelectric.com

32 >>>>>>

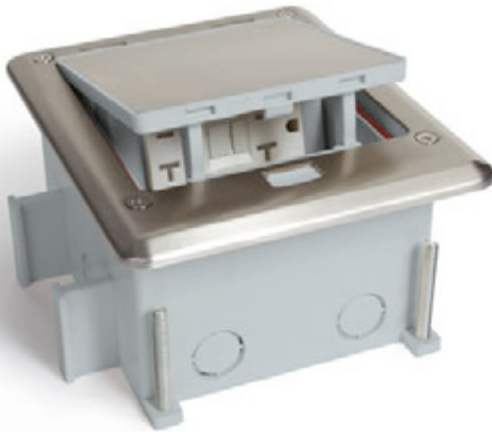


OUTDOOR

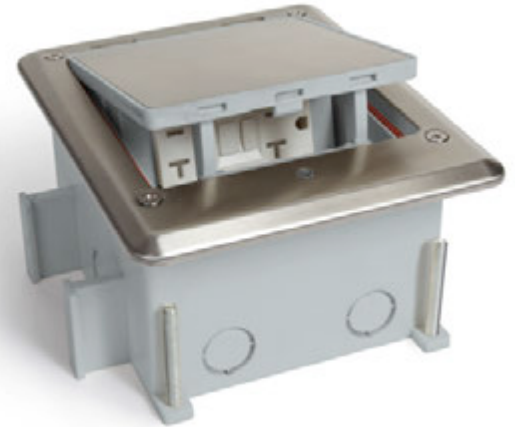
CATALOG #	DESCRIPTION
OB-1-SP	Outdoor floor box with Stainless Steel cover; Push Button Open ; Includes 20 AMP WR/TR GFI receptacle; Fully IP66 rated water proof (<i>when in closed position</i>). Includes wrench for inside wire connections.
OB-1-SH	Outdoor floor box with Stainless Steel cover; Hex Key Open ; Includes 20 AMP WR/TR GFI receptacle; Fully IP66 rated water proof (<i>when in closed position</i>). Includes wrench for inside wire connections.
OB-1-SP-6PORT ①	Outdoor floor box for Comm./Data with Stainless Steel cover: Push Button Open ; Fully IP66 rated water proof (<i>when in closed position</i>). Includes wrench for inside wire connections.
OB-1-SH-6PORT ①	Outdoor floor box for Comm./Data with Stainless Steel cover: Hex Key Open ; Fully IP66 rated water proof (<i>when in closed position</i>). Includes wrench for inside wire connections.

① Max 3 CAT6 jacks per six port

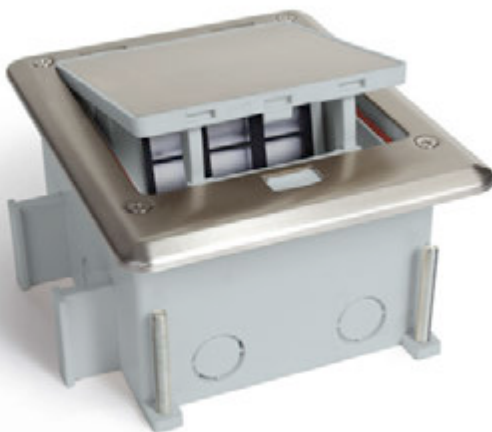
OB-1-SP



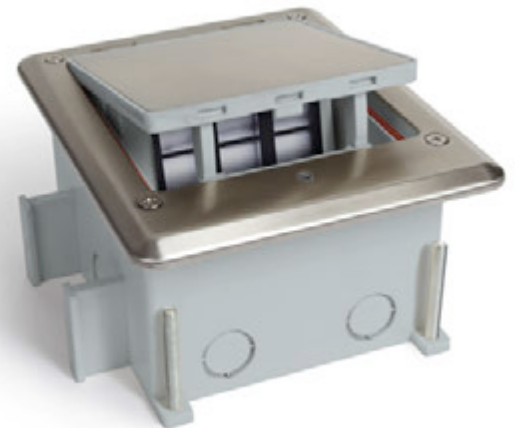
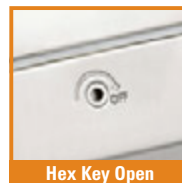
OB-1-SH



OB-1-SP-6PORT



OB-1-SH-6PORT



BOX SPECIFICATIONS

- Cover is 6 7/8" L x 5 11/16" W
- Overall height with box and extension ring is 6 1/2"
- Minimum depth can be adjusted upwards of 1 3/4"
- Box dimensions are 5 1/4" L x 4 3/4" W (the cover hangs over more on one side of the box than the other)



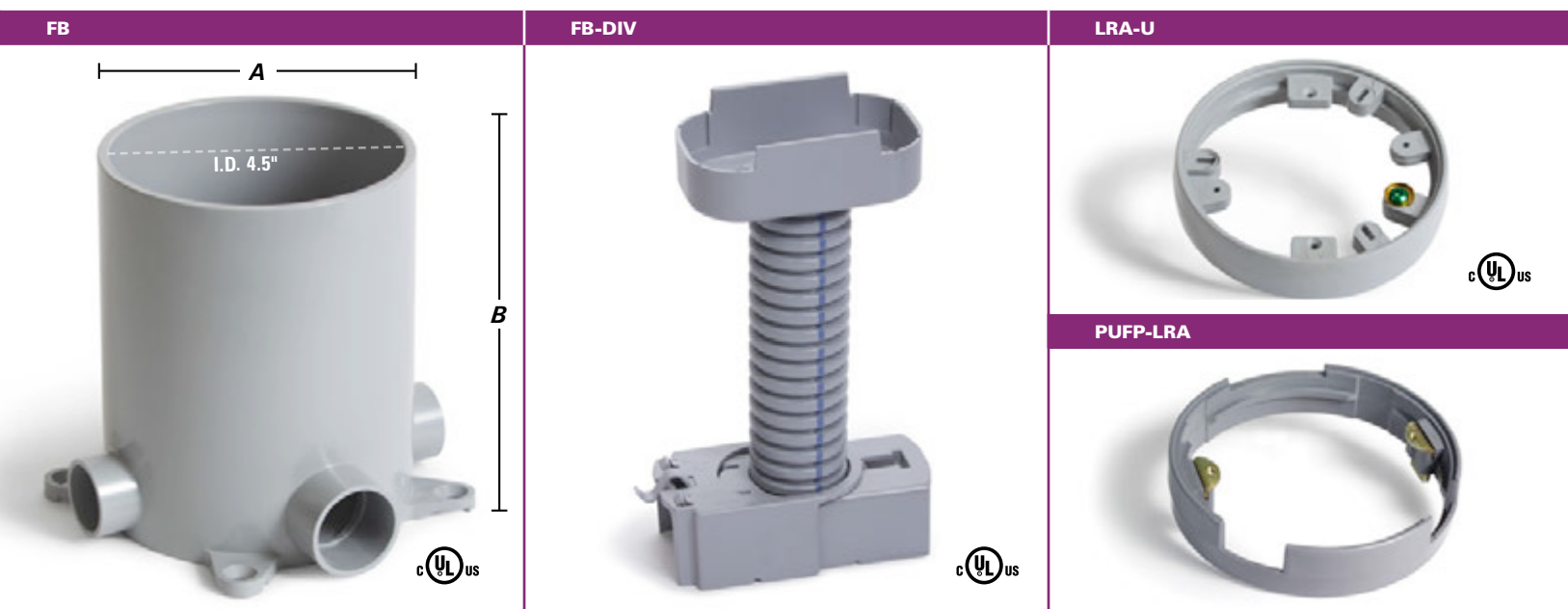
FEATURES & BENEFITS

- Intertek **IP66 RATED** BOX (when in closed position)
- Receptacle:** GFI - UL Listed E229322
- Tamper Proof opening** (with hex key option)
- Gangable**
- Includes **weather resistant** U.L. listed receptacle
- Patent protected**
- Stainless Steel #316:** increases general corrosion resistance, improves resistance to pitting from chloride ion solutions, and provides increased strength at elevated temperatures.

PVC Box & Accessories

CATALOG #	DESCRIPTION	DIMENSIONS		INTERIOR CAPACITY
		A	B	
FB	Round PVC box with (2) 3/4" hubs, (2) 1" hubs, (2) 3/4" reducers, (4) 1/2" reducers, ADAPTER RING NOT INCLUDED.	5"	6"	90 Cu. In. (15.5/In.)
FBKIT	Round PVC box with (2) 3/4" hubs, (2) 1" hubs, (2) 3/4" reducers, (4) 1/2" reducers, ADAPTER RING INCLUDED.	5"	6"	90 Cu. In. (15.5/In.)
CATALOG #	DESCRIPTION			
FB-DIV	Divider for FB & FBKIT floor boxes			
LRA-U	Leveling ring for FB & FBKIT			
PUFP-LRA	Leveling ring for PUFP plates			

>>>> UL listing #514C



Non-Metallic Covers

CATALOG #	DESCRIPTION
PFC-B	5 3/4" Brown plastic flanged cover with single flip lid. Includes mounting plates and gaskets for duplex receptacle, GFI/decora receptacle and single receptacle/Data.
PFC-E	5 3/4" Ebony plastic flanged cover with single flip lid. Includes mounting plates and gaskets for duplex receptacle, GFI/decora receptacle and single receptacle/Data.
PFC-G	5 3/4" Gold plastic flanged cover with single flip lid. Includes mounting plates and gaskets for duplex receptacle, GFI/decora receptacle and single receptacle/Data.
PFC-S	5 3/4" Gray plastic flanged cover with single flip lid. Includes mounting plates and gaskets for duplex receptacle, GFI/decora receptacle and single receptacle/Data.
PFC-T	5 3/4" Tan plastic flanged cover with single flip lid. Includes mounting plates and gaskets for duplex receptacle, GFI/decora receptacle and single receptacle/Data.

>>>> All covers listed above: UL listing #514C



PVC Metal Covers

»»»» For Replacement Plugs, see page 51

CATALOG #	DESCRIPTION
PUFP-B ①	6" Brass pop up floor plate with with 15 AMP (TR) GFI receptacle
PUFP-BC ①	6" Brass pop up floor plate with 6 port Comm./Data device (max 3 CAT6 jacks)
PUFP-BD ①	6" Brass pop up floor plate with 15 AMP (TR) decora receptacle
PUFP-S ①	6" Stainless Steel pop up floor plate with with 15 AMP (TR) GFI receptacle
PUFP-SC ①	6" Stainless Steel pop up floor plate with 6 port Comm./Data device (max 3 CAT6 jacks)
PUFP-SD ①	6" Stainless Steel pop up floor plate with 15 AMP (TR) decora receptacle


»»»» ① Requires PUFP-LRA to mount to FB box

»»»» UL recognized components: PUFP series UL recognized 498, ETL listed P63; TCP series marked cULus are UL listed 498

PUFP-B	PUFP-BC	PUFP-BD
		
PUFP-S	PUFP-SC	PUFP-SD
		

TCP-1

TCP-1: 5 3/4" flanged cover, with 2" - 1/2" combo plug for Comm./Data. or single receptacle
OPTIONS: -3/4" for 2" - 3/4" combo plug for Comm./Data. or single receptacle
 -1" for 2" - 1" combo plug for Comm./Data. or single receptacle



Finish Options

Brass » TCP-1
 Brass » TCP-1-3/4"
 Brass » TCP-1-1"

Nickel Silver » TCP-1-NS

TCP-1-PC

TCP-1-PC: 5 3/4" Brass flanged cover, with 2" - 1/2" combo plug for Comm./Data. or single recept., & (2) 1/2" plugs for Comm./Data




Finish Options

Brass » TCP-1-PC

TCP-2-PC

TCP-2-PC: 5 3/4" flanged cover, with (2) 1 1/2" screw plugs for duplex power or Comm./Data., & (2) 1/2" plugs for Comm./Data



Finish Options

Brass » TCP-2-PC
 Aluminum » TCP-2-PC-A

TCP-2

TCP-2: 5 3/4" flanged cover, with (2) 1 1/2", screw plugs for duplex power or Comm./Data



Finish Options

Brass » TCP-2
 Aluminum » TCP-2-A
 New color
 Dark Bronze » TCP-2-DB
 Nickel Silver » TCP-2-NS

TCP-2-LR

TCP-2-LR: 5 3/4" Seamless flanged cover, with dual flip lid and duplex mounting plate



Finish Options

Brass » TCP-2-LR
 Aluminum » TCP-2-LR-A
 New color
 Dark Bronze » TCP-2-LR-DB

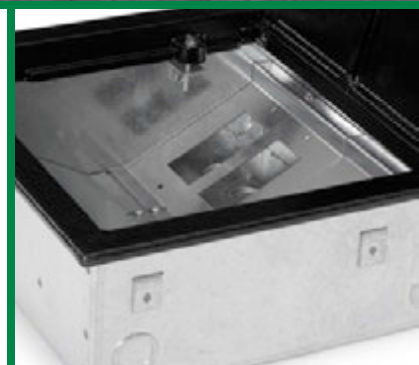
Commercial Floor Boxes

LEW ELECTRIC FITTINGS COMPANY
For more information, call 630-665-2075
www.lewelectric.com

36 >>>>>> Access Boxes | 1101 Rectangular Boxes | 32 Round Boxes | Poke-Through/In-Slab | Nozzles



ACCESS FLOOR BOXES:
A great solution for the new 2017
NEC meeting room requirements

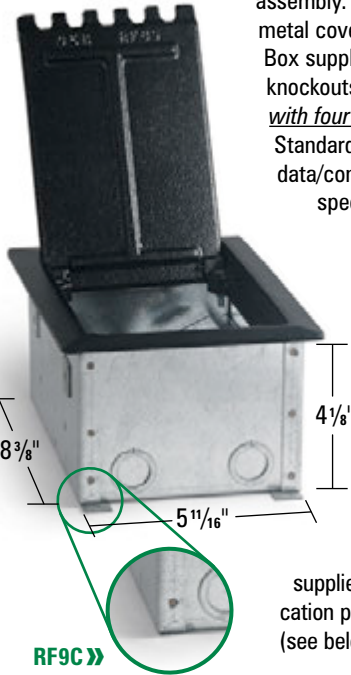


ACCESS Floor boxes

RF9C & RF10C
CSA #79115

THE CF9C SERIES BOX is a dual service floor box for use with conduit in a **poured concrete floor**. The box is constructed of 16 ga. galvanized steel and comes complete with 1/4" cast aluminum cover assembly. Boxes are shipped with disposable sheet metal cover to protect box during concrete pour. Box supplied with two 1/2-3/4" combination conduit knockouts each end for conduit feed and complete with four adjustable legs for pre-pour adjustment. Standard boxes supplied with power plates and data/communication plates punched to accept specified devices (see below).

CF9C

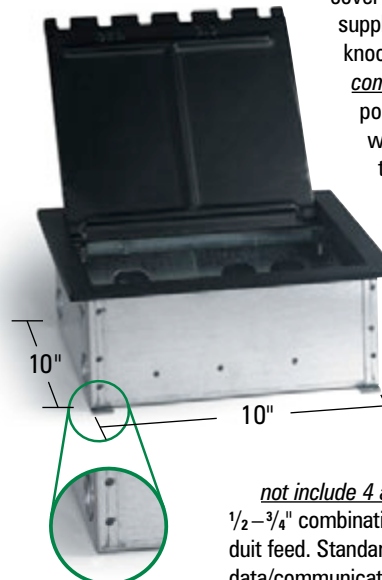


RF9C

THE RF9C SERIES BOX is a dual service **raised floor box**. The box is constructed of 16 Ga. Galvanized steel and is supplied complete with 1/4" cast aluminum cover assembly. Box supplied with two 1/2-3/4" combination conduit knockouts at each end (does not include 4 adjustable legs). RF9 series access floor boxes are constructed with multiple compartments to suit application. Standard boxes supplied with power plates and data/communication plates punched to accept specified devices (see below).

THE CF10C SERIES BOX is a large capacity dual service floor box for use with conduit in a **poured concrete floor**. The box is constructed of 16 ga. galvanized steel and comes complete with a 1/4" cast aluminum cover assembly.

CF10C



RF10C

Boxes are shipped with disposable sheet metal cover to protect box during concrete pour. Box supplied with two 1/2-3/4" combination conduit knockouts each end for conduit feed and complete with four adjustable legs for pre-pour adjustment. Standard boxes supplied with power plates and data/communication plates punched to accept specified devices (see below).

THE RF10C SERIES BOX is a large capacity dual service floor box for use in a **raised floor**. The box is constructed of 16 ga. galvanized steel and comes complete with 1/4" cast aluminum cover assembly (does not include 4 adjustable legs).

Box supplied with two 1/2-3/4" combination conduit knockouts each end for conduit feed. Standard boxes supplied with power plates and data/communication plates punched to accept specified devices (see below).

Power Device Plate Specifications

Receptacles are not normally supplied with boxes, contact factory for pricing with details of any receptacles that are required to be supplied with boxes.

- | | |
|---------------------------|-------------------------|
| 1 = 1 std duplex cut out | 3 = 1 "Decora" cut out |
| 2 = 2 std duplex cut outs | 4 = 2 "Decora" cut outs |

Note: Decora cut outs measure 1.3125" x 2.66"

Tel/Data Device Plate Specifications

Receptacles are not normally supplied with boxes, contact factory for pricing with details of any receptacles that are required to be supplied with boxes.

- | | | |
|-------------------------|-----------------------|-----------------------|
| A = 1 "Decora" cut out | C = 1 "RJ45" cut out | E = 3 "RJ45" cut outs |
| B = 2 "Decora" cut outs | D = 2 "RJ45" cut outs | F = 4 "RJ45" cut outs |

Note: Decora cut outs measure 1.3125" x 2.66"; RJ45 cut outs measure .765" x .585"

Power Device Plate Specifications

Receptacles are not normally supplied with boxes, contact factory for pricing with details of any receptacles that are required to be supplied with boxes.

- | | |
|---------------------------|---------------------------|
| 1 = 1 std duplex cut out | 5 = 3 std duplex cut outs |
| 2 = 2 std duplex cut outs | 6 = 4 std duplex cut outs |
| 3 = 1 "Decora" cut out | 7 = 3 "Decora" cut outs |
| 4 = 2 "Decora" cut outs | 8 = 4 "Decora" cut outs |

Note: Decora cut outs measure 1.3125" x 2.66"

Tel/Data Device Plate Specifications

Receptacles are not normally supplied with boxes, contact factory for pricing with details of any receptacles that are required to be supplied with boxes.

- | | | |
|-------------------------|-----------------------|-------------------------|
| A = 1 "Decora" cut out | E = 3 "RJ45" cut outs | J = 7 "RJ45" cut outs |
| B = 2 "Decora" cut outs | F = 4 "RJ45" cut outs | K = 8 "RJ45" cut outs |
| C = 1 "RJ45" cut out | G = 5 "RJ45" cut outs | M = 3 "Decora" cut outs |
| D = 2 "RJ45" cut outs | H = 6 "RJ45" cut outs | P = 4 "Decora" cut outs |

Note: Decora cut outs measure 1.3125" x 2.66"; RJ45 cut outs measure .765" x .585"

Standard Ordering Specifications

- Specify **box type** [CF9C]
- Specify **power device plate** [ex. CF9C2 = 2 std duplex cut outs.]
- Specify **Tel/Data device plates** [ex. CF9C2C = 2 std duplex cut outs for power, 1 RJ45 for Tel/Data.]
- Specify **Lid Color Option** (-BLK = Black; -ALU = Aluminum) [ex. CF9C2C-ALU = Aluminum]

Standard Ordering Specifications

- Specify **box type** [CF10C]
- Specify **power device plate** [e.g. CF10C6 = 4 std duplex cut outs.]
- Specify **Tel/Data device plates** [e.g. CF10C6BD = 4 duplex cut outs for power, 2 Decora & 2 RJ45 for Tel/Data.]
- Specify **Lid Color Option** (-BLK = Black; -ALU = Aluminum) [ex. CF10C6BD-ALU = Aluminum]

1101 Rectangular Boxes—Covers & Flanges

CATALOG #	DESCRIPTION	LENGTH	WIDTH	HEIGHT	VOLUME
1101-SMB	One gang, deep stamped steel floor box	6 1/16"	4 13/16"	3 1/4"	50.3 Cu. In.
1102-SMB	Two gang, deep stamped steel floor box	9 3/16"	4 13/16"	3 13/16"	48.5 Cu. In. per gang
1103-SMB	Three gang, deep stamped steel floor box	12 3/8"	4 13/16"	3 1/4"	38.3 Cu. In. per gang
SH-1101-SMB	One gang, shallow stamped steel floor box	6 1/16"	4 13/16"	2 5/16"	31.5 Cu. In.
SH-1102-SMB	Two gang, shallow stamped steel floor box	9 3/16"	4 13/16"	2 5/16"	33.5 Cu. In. per gang
SH-1103-SMB	Three gang, shallow stamped steel floor box	12 3/8"	4 13/16"	2 11/16"	25.5 Cu. In. per gang
1101-DBE ① ②	One gang, brass frame	4 5/16"	3 11/32"	xxxxx	xxxxx
1102-DBE ① ②	Two gang, brass frame	6 3/8"	4 3/8"	xxxxx	xxxxx
1103-DBE ① ②	Three gang, brass frame	9 5/16"	4 5/16"	xxxxx	xxxxx

① Add -A for Aluminum tile frame; ② Add -B for Brass tile frame

>>>> All boxes UL listing #514A

>>>> Tile frames not included with stamped steel floor box. All tile frames 5/8" overall height

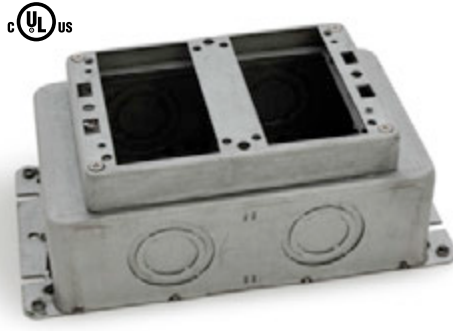
>>>> All boxes pre-pour adjustment of 2 1/4" and after pour adjustment 1/2"

>>>> Knockouts: Deep – Sides and Bottom: 3/4", 1", 1 1/4"; Shallow – Sides: 1/2" and 3/4"; Bottom: 3/4", 1" and 1 1/4"

1101-SMB



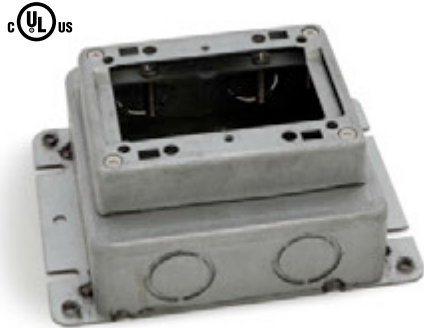
1102-SMB



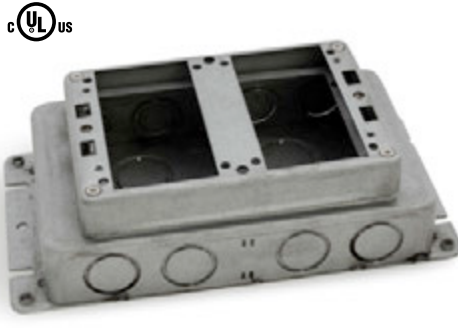
1103-SMB



SH-1101-SMB



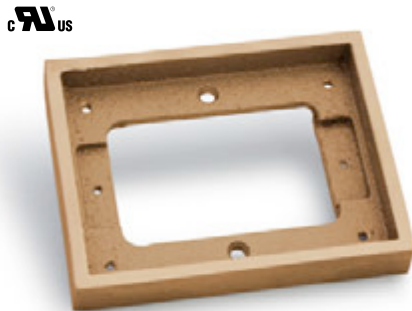
SH-1102-SMB



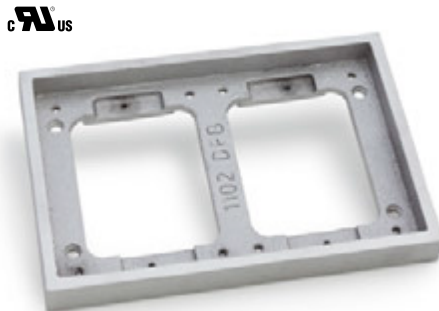
SH-1103-SMB



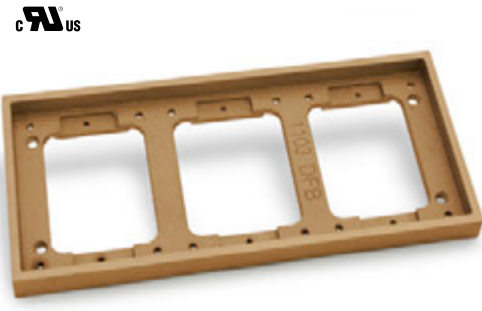
1101-DBE-B



1102-DBE-A



1103-DBE-B



1101 Rectangular Boxes—Covers & Flanges

»»»» For Replacement Plugs, see page 51

6304-DFB-1

6304-DFB-1: Hinged 2 7/8" x 3 7/8" cover (1/4" thick) for duplex

OPTIONS: -TEL for Comm./Data
 -GFI for GFI or decora receptacle

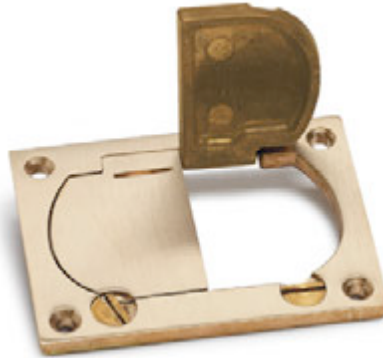


Finish Options

cUL US
Brass » 6304-DFB-1
Brass » 6304-DFB-1-TEL
Brass » 6304-DFB-1-GFI
 cUL US
Aluminum » 6304-DFB-1-A
Aluminum » 6304-DFB-1-TEL-A
Aluminum » 6304-DFB-1-GFI-A

6304-DFB-LR

6304-DFB-LR: Dual hinged 2 7/8" x 3 7/8" cover (1/4" thick) for duplex



Finish Options

cUL US
Brass » 6304-DFB-LR

Aluminum » 6304-DFB-LR-A

6304-DP

6304-DP: 2 7/8" x 3 7/8" cover (1/8" thick) with (2) 1/2" screw plugs for duplex



Finish Options

cUL US
Brass » 6304-DP

Aluminum » 6304-DP-A

6304-S

6304-S: 2 7/8" x 3 7/8" cover (1/8" thick) with 2"–1/2" combo plug for Comm./Data



Finish Options

cUL US
Brass » 6304-S

Aluminum » 6304-S-A

6304-S-3/4

6304-S-3/4: Brass, 2 7/8" x 3 7/8" cover (1/8" thick) with 2"–3/4" combo plug for Comm./Data



Finish Options

Brass » 6304-S-3/4

6304-S-1

6304-S-1: Brass, 2 7/8" x 3 7/8" cover (1/8" thick) with 2"–1" combo plug for Comm./Data

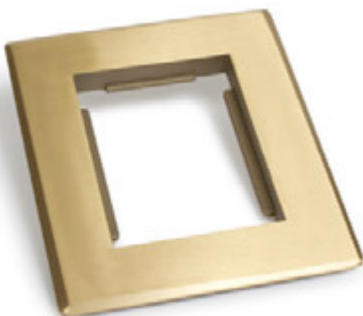


Finish Options

Brass » 6304-S-1

CF-1101-DFB

CF-1101-DFB: Single gang carpet flange, 5 1/32" x 6 1/4"



Finish Options

Brass » CF-1101-DFB

Aluminum » CF-1101-DFB-A

CF-1102-DFB

CF-1102-DFB: Two gang carpet flange, 6 1/4" x 8 1/4"



Finish Options

Brass » CF-1102-DFB

Aluminum » CF-1102-DFB-A

CF-1103-DFB

CF-1103-DFB: Three gang Brass carpet flange, 6 1/4" x 11 1/8"



Finish Options

Brass » CF-1103-DFB

Aluminum » CF-1103-DFB-A

1101 Rectangular Boxes—Fully Adjustable

CATALOG #	DESCRIPTION	DIMENSIONS			ADJUST AFTER	INTERIOR CAPACITY	CONDUIT OPENINGS	MAX TAP
		H	L	W				
1101-58 ①	Deep, single gang cast box <i>Fully adjustable</i>	3 3/4"	4 1/4"	3 3/8"	3/8"	13 Cu. In. (Min)	Sides (4) 3/4"	1 1/4"
1102-58 ①	Deep, two gang cast box (partitioned), <i>Fully adjustable</i>	3 3/4"	6 3/8"	4 3/8"	3/8"	26 Cu. In. (Min) (13 Cu. In./Gang)	Sides (6) 3/4"	1 1/4"
1103-58 ①	Deep, three gang cast box (partitioned), <i>Fully adjustable</i>	3 3/4"	9 1/4"	4 5/16"	3/8"	40 Cu. In. (Min) (13 Cu. In./Gang)	Sides (8) 3/4"	1 1/4"

① Add -A for Aluminum finish

>>>> All boxes UL listing #514A, #498

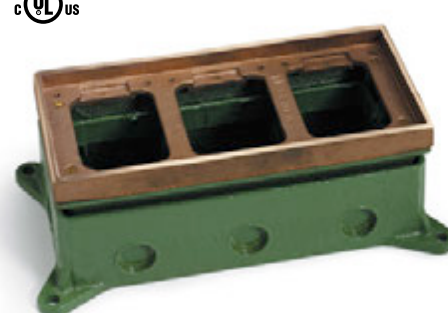
1101-58



1102-58-A



1103-58



1101 Rectangular Boxes—Semi Adjustable

CATALOG #	DESCRIPTION	DIMENSIONS			ADJUST BEFORE	INTERIOR CAPACITY	CONDUIT OPENINGS	MAX TAP
		H	L	W				
SH-1101-58 ①	Shallow, single gang cast box <i>Semi adjustable</i>	2 1/4"	4 1/4"	3 3/8"	1"	16 Cu. In.	Sides (4) 3/4"	1"
SH-6262-58 ①	Shallow, two gang cast box (partitioned), <i>Semi adjustable</i>	2 1/4"	6 3/8"	4 3/8"	1"	25 Cu. In. (12.5 Cu. In./Gang)	Sides (6) 3/4"	1"
SH-6263-58 ①	Shallow, three gang cast box (partitioned), <i>Semi adjustable</i>	2 1/4"	9 1/4"	4 5/16"	1"	50 Cu. In. (16.5 Cu. In./Gang)	Sides (8) 3/4"	1"

① Add -A for Aluminum finish

>>>> All boxes UL listing #514A, #498

SH-1101-58



SH-6262-58-A



SH-6263-58



1101 Rectangular Boxes—Covers & Flanges

»»»» For Replacement Plugs, see page 51

6304-DFB-1

6304-DFB-1: Hinged 2 7/8" x 3 7/8" cover (1/4" thick) for duplex

OPTIONS: -TEL for Comm./Data
 -GFI for GFI or Decora receptacle

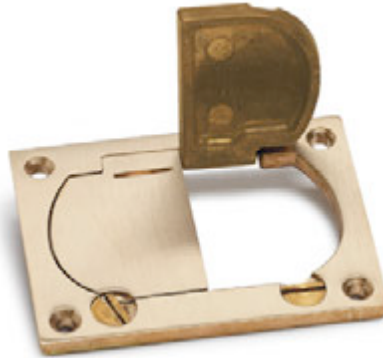


Finish Options

Brass » 6304-DFB-1
 Aluminum » 6304-DFB-1-A
 Brass » 6304-DFB-1-TEL
 Aluminum » 6304-DFB-1-TEL-A
 Brass » 6304-DFB-1-GFI
 Aluminum » 6304-DFB-1-GFI-A

6304-DFB-LR

6304-DFB-LR: Dual hinged 2 7/8" x 3 7/8" cover (1/4" thick) for duplex



Finish Options

Brass » 6304-DFB-LR
 Aluminum » 6304-DFB-LR-A

6304-DP

6304-DP: 2 7/8" x 3 7/8" cover (1/8" thick) with (2) 1/2" screw plugs for duplex



Finish Options

Brass » 6304-DP
 Aluminum » 6304-DP-A

6304-S

6304-S: 2 7/8" x 3 7/8" cover (1/8" thick) with 2"–1/2" combo plug for Comm./Data



Finish Options

Brass » 6304-S
 Aluminum » 6304-S-A

6304-S-3/4

6304-S-3/4: Brass, 2 7/8" x 3 7/8" cover (1/8" thick) with 2"–3/4" combo plug for Comm./Data



Finish Options

Brass » 6304-S-3/4

6304-S-1

6304-S-1: Brass, 2 7/8" x 3 7/8" cover (1/8" thick) with 2"–1" combo plug for Comm./Data

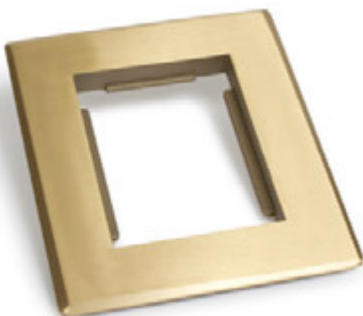


Finish Options

Brass » 6304-S-1

CF-1101-DFB

CF-1101-DFB: Single gang carpet flange, 5 1/32" x 6 1/4"



Finish Options

Brass » CF-1101-DFB
 Aluminum » CF-1101-DFB-A

CF-1102-DFB

CF-1102-DFB: Two gang carpet flange, 6 1/4" x 8 1/4"

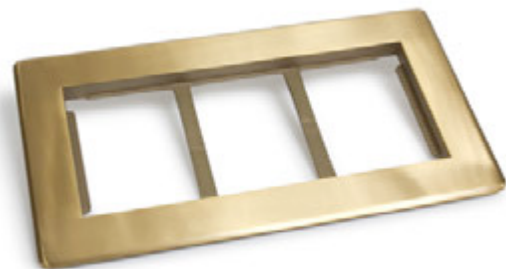


Finish Options

Brass » CF-1102-DFB
 Aluminum » CF-1102-DFB-A

CF-1103-DFB

CF-1103-DFB: Three gang Brass carpet flange, 6 1/4" x 11 1/8"



Finish Options

Brass » CF-1103-DFB
 Aluminum » CF-1103-DFB-A

32 Round Boxes, Adjustable

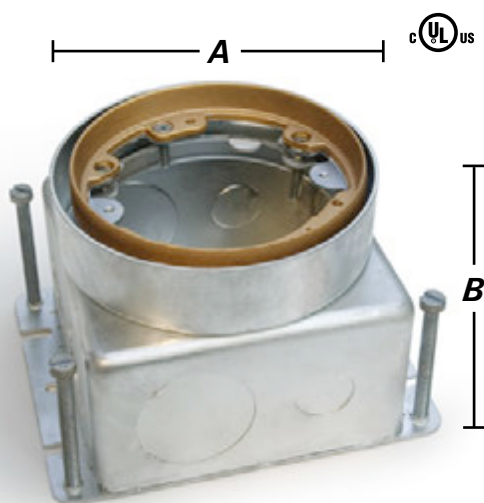
CATALOG #	DESCRIPTION	DIMENSIONS		ADJUST BEFORE	ADJUST AFTER	INTERIOR CAPACITY	CONDUIT OPENINGS	MAX TAP
		A	B					
532-58 ①	Deep, cast box, fully adjustable	4 1/4"	4 3/16"	X	3/8"	32 Cu. In.	Sides (4) 3/4"	1 1/4"
532-SB-58 ①	Shallow, cast box, fully adjustable	4 1/4"	3 5/16"	X	3/8"	24 Cu. In.	Sides (4) 3/4"	1 1/4"
532-SMB	Deep Stamped Steel, fully adjustable	4 11/16"	3 3/4"	2 1/4"	1/2"	57 Cu. In.	1/2", 3/4", 1", 1 1/4"	none
532-SMB-SB ③	Shallow, Stamped Steel, fully adjustable	4 11/16"	2 13/16"	2 1/4"	1/2"	43.8 Cu. In.	Sides (6) 1/2", (4) 3/4" Bottom (3) 1/2", (2) 3/4"	none
CATALOG #	DESCRIPTION	DIMENSIONS		ADJUST BEFORE	ADJUST AFTER	INTERIOR CAPACITY	CONDUIT OPENINGS	MAX TAP
		A	B					
332-58 ①	Shallow, cast box, semi adjustable	4 1/4"	2 1/8"	1"	X	12 Cu. In.	Sides (4) 3/4"	1"
MW-332-58 ①	Core drill cast box, semi adjustable	4 1/4"	2 1/8"	1/2"	X	12 Cu. In.	Sides (4) 3/4" ②	1"

① Add -A for Aluminum finish; ② additional 3/4" conduit opening in bottom of box;

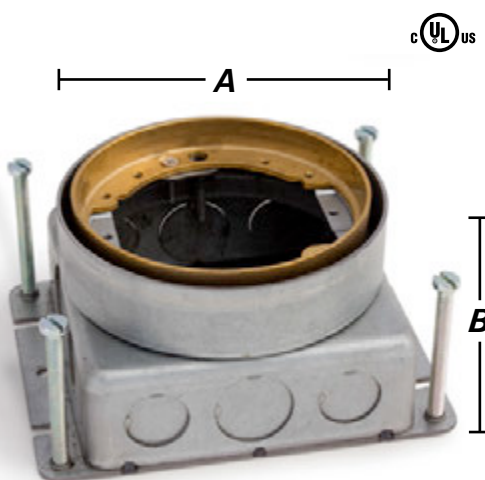
③ additional 3/4" (2) & 1/2" (2) conduit openings in bottom

>>>> All boxes UL listing #514A, #498

532-SMB



532-SMB-SB



532-58



532-SB-58



332-58



MW-332-58



32 Round Box Covers



▶▶▶▶ Marked cULus are UL listed 498
 ▶▶▶▶ For Replacement Plugs, see page 51

523-DP

523-DP: 4" cover (1/8" thick) with (2) 1 1/2" screw plugs for duplex



Finish Options

 cULus	 cULus
Brass » 523-DP	Aluminum » 523-DP-A
New color	 cULus
Dark Bronze » 523-DP-DB	Nickel Silver » 523-DP-NS

524

524: 4" cover (1/8" thick) with 2"–1/2" combo plug for Comm./Data

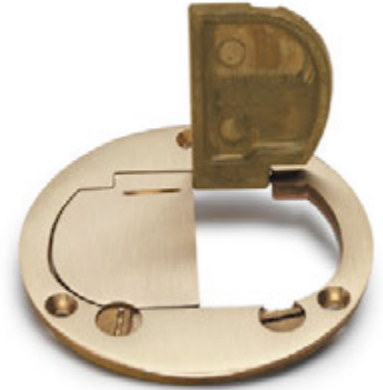


Finish Options

 cULus
Brass » 524

DFB-LR

DFB-LR: 4" dual hinged cover (1/4" thick) for duplex



Finish Options

 cULus	
Brass » DFB-LR	Aluminum » DFB-LR-A

DFB-1

DFB-1: 4" hinged cover (1/4" thick) for duplex



Finish Options

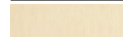



 cULus	
Brass » DFB-1	Aluminum » DFB-1-A

SCF-1

SCF-1: 5 1/4" flange



Finish Options

	
Brass » SCF-1	Aluminum » SCF-1-A
	 Available separately
Clear Plastic » SCF-1-CP	Nickel Silver » SCF-1-NS

TCP-1

TCP-1: 5 3/4" flanged cover, with 2"–1/2" combo plug for Comm./Data. or single receptacle



Finish Options

 cULus	
Brass » TCP-1	Nickel Silver » TCP-1-NS

TCP-2

TCP-2: 5 3/4" flanged cover, with (2) 1 1/2" screw plugs for duplex power or Comm./Data



Finish Options



 cULus	 cULus
Brass » TCP-2	Aluminum » TCP-2-A
New color	
Dark Bronze » TCP-2-DB	Nickel Silver » TCP-2-NS

TCP-2-LR

TCP-2-LR: 5 3/4" Seamless flanged cover, with dual flip lid and duplex mounting plate

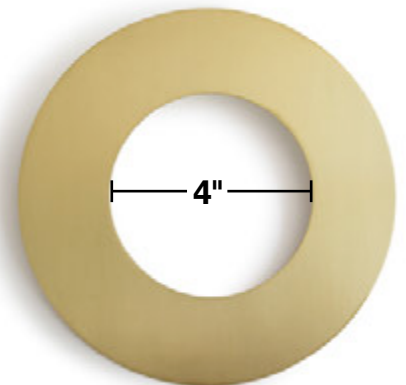


Finish Options

 cULus	 cULus
Brass » TCP-2-LR	Aluminum » TCP-2-LR-A
New color	
Dark Bronze » TCP-2-LR-DB	

TCP-GR1

TCP-GR1: Brass goof ring for the 32 series; O.D. 7 1/2", I.D. 4"



POKE-THROUGH (MOI)

FEATURES & BENEFITS

- ❑ **Totally enclosed and partitioned compartments** for Power / Voice / Data in one unit
- ❑ **4 to 10 jacks** for Voice and Data in one unit
- ❑ **Threaded conduit openings** reduce the risk of tampering (or need for access to connections) in ceiling space below
- ❑ **Completely flush** with 1/4" carpet or other flooring
- ❑ Finish available in **Stainless Steel, Brass or Black**
- ❑ **Fast, simple installation** (locknut eliminates need for concrete anchors)
- ❑ Can be **installed through floor before or after carpet installation**

UL LISTINGS (POKE-THROUGH ONLY)

- » CSA #: 212271
- » Units are UL 514C scrub tested and approved
- » Meets all UL standards required for the U.S.
- » Two-hour fire rating for both the U.S. and Canada



IN-SLAB (MOI-SLB)

FEATURES & BENEFITS

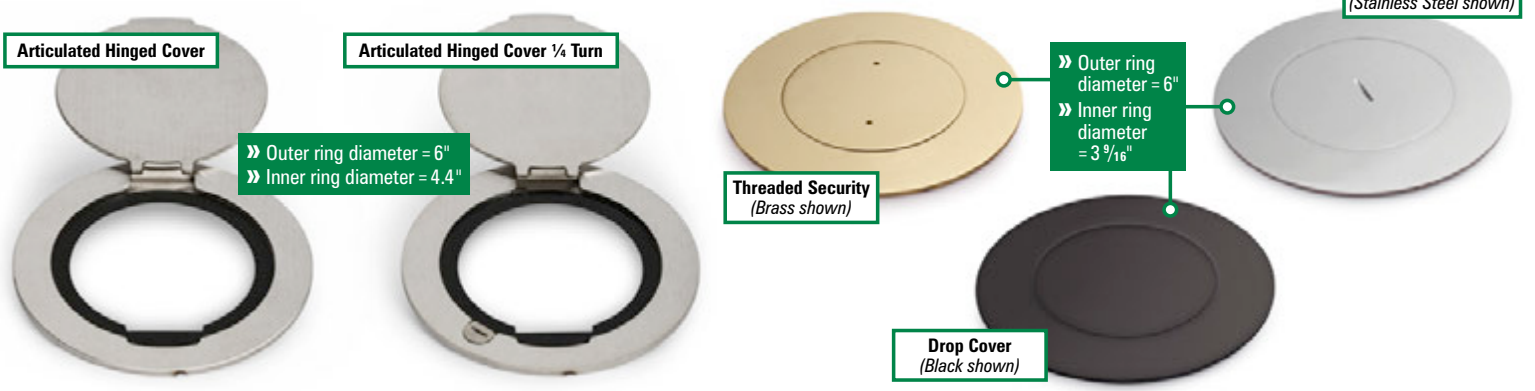
- ❑ **Totally enclosed and partitioned compartments** for Power / Voice / Data in one unit
- ❑ **4 to 10 jacks** for Voice and Data in one unit
- ❑ **Completely flush** with 1/4" carpet or other flooring
- ❑ Finish available in **Stainless Steel, Brass or Black**
- ❑ Slab Unit can be **poured into slab** for Slab-On-Grade construction

UL LISTINGS (IN-SLAB ONLY)

- » CSA #: 212271
- » Units are UL 514C scrub tested and approved
- » Meets all UL standards required for the U.S.

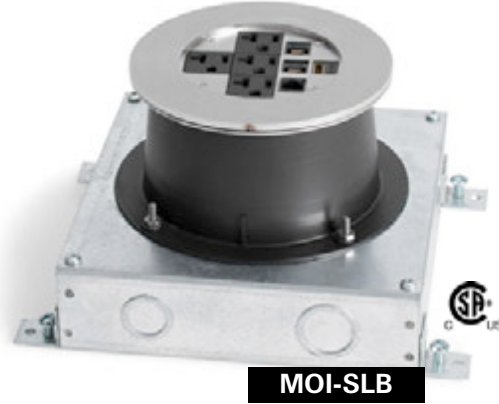


COVER OPTIONS



HOW TO ORDER

STEP 1 » Choose **Poke-Through (MOI)** or **In-Slab (MOI-SLB)**



STEP 2 » Choose **Configuration ***

*Configuration does not include communication components

	COMM10 » Ten communication openings
	DP1 » Decora receptacle
	DP1-COMM4 » Decora receptacle & (4) communication openings
	PASS-THROUGH » 2.5" trade size circular opening
	PWR2-COMM4 » (2) single receptacle & (4) communication openings
	PWR2-COMM4-DB15 » (2) single receptacle & (4) communication openings & (1) DB-15 opening

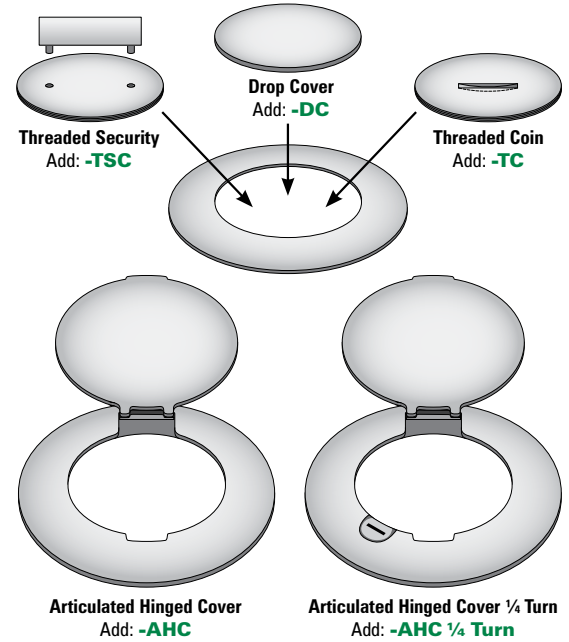
	PWR2-COMM5 » (2) single receptacle & (5) communication openings
	PWR2-COMM6 » (2) single receptacle & (6) communication openings
	PWR4 » (4) single receptacle
	PWR4-COMM4 » (4) single receptacle & (4) communication openings
	SYS-COMM » Systems furniture communication-power & comm cabling
	AV-COMM4 » (1) Decora opening for CI-5BWPA & (4) communication openings

EXAMPLE: For **Poke-Through** » **MOI-COMM10**; For **In-Slab** » **MOI-SLB-COMM10**

STEP 3 » Choose **Cover Finish**

Stainless Steel Add: -SS	Brass Add: -BR	Black* Add: -BK
Cover Types: Drop Cover Threaded Coin Threaded Security Articulated Hinged Cover Articulated Hinged Cover ¼ Turn	Cover Types: Drop Cover Threaded Coin Threaded Security Articulated Hinged Cover Articulated Hinged Cover ¼ Turn	Cover Types: Drop Cover only

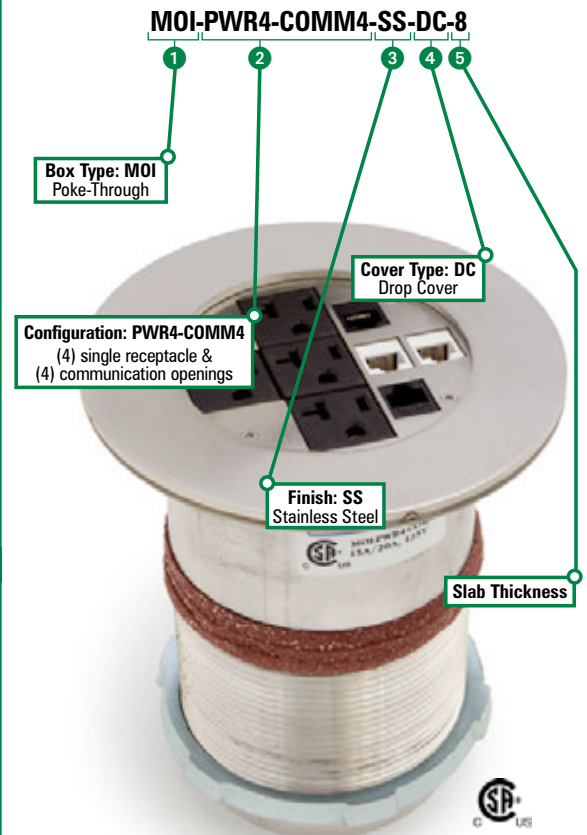
STEP 4 » Choose **Cover Type**



STEP 5 » Specify **Slab Thickness**

» Must specify when ordering to achieve proper collar size of threaded pipe

EXAMPLE



RECESSED POKE-THROUGH (MOI-REC)

FEATURES & BENEFITS

- Totally enclosed and partitioned compartments** for Power / Voice / Data in one unit
- 4 to 10 jacks** for Voice and Data in one unit
- Threaded conduit openings** reduce the risk of tampering (or need for access to connections) in ceiling space below
- Completely flush** with 1/4" carpet or other flooring
- Fast, simple installation** (locknut eliminates need for concrete anchors)
- Can be **installed through floor before or after carpet installation**
- Recessed configuration allows for **cover to be closed while in use**

UL LISTINGS (POKE-THROUGH ONLY)

- » CSA #: 212271
- » Meets all UL standards required for the U.S.
- » Two-hour fire rating for both the U.S. and Canada



RECESSED IN-SLAB (MOI-SLB-REC)



FEATURES & BENEFITS

- Totally enclosed and partitioned compartments** for Power / Voice / Data in one unit
- 4 to 10 jacks** for Voice and Data in one unit
- Completely flush** with 1/4" carpet or other flooring
- Slab Unit can be **poured into slab** for Slab-On-Grade construction
- Recessed configuration allows for **cover to be closed while in use**

UL LISTINGS (IN-SLAB ONLY)

- » CSA #: 212271
- » Meets all UL standards required for the U.S.

COVER

Articulated Hinged Cover with Cable Exit Door – Stainless Steel

AHC Cover

- » Outer ring diameter = 6"
- » Inner ring diameter = 4.4"

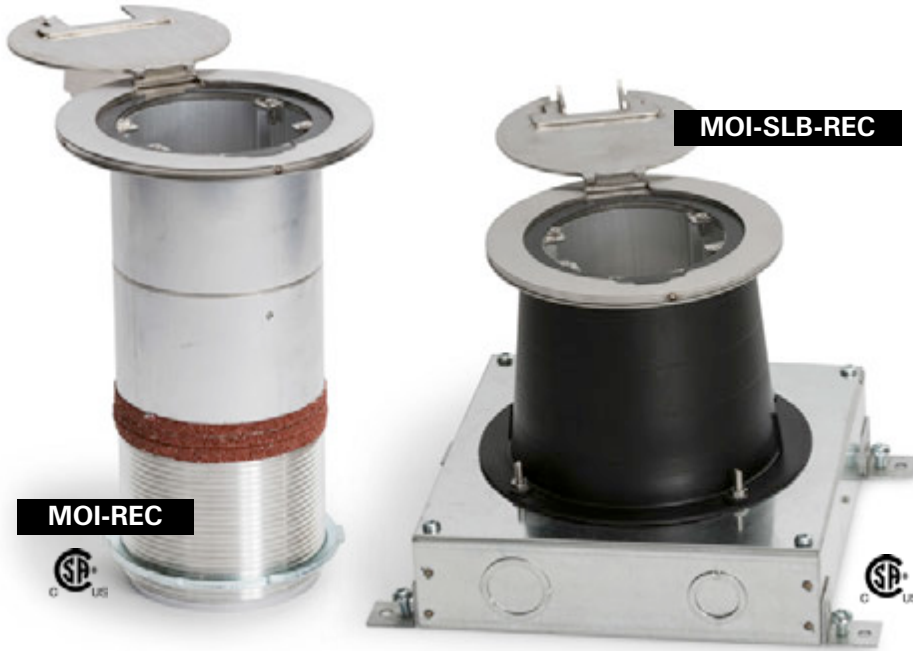


Articulated Hinged Cover with Cable Exit Door – Brass



HOW TO ORDER

STEP 1 » Choose Recessed Poke-Through (MOI-REC) or Recessed In-Slab (MOI-SLB-REC)



STEP 3 » Choose Cover Finish (AHC-CED Cover only for MOI-REC and MOI-SLB-REC)


Stainless Steel
 Add: **-SS**


Brass
 Add: **-BR**

STEP 4 » Specify Slab Thickness













- » Must specify when ordering to achieve proper collar size of threaded pipe
- ** Minimum slab thickness for Recessed (MOI-REC or MOI-SLB-REC) is 6 inches

EXAMPLE



STEP 2 » Choose Configuration *

*Configuration does not include communication components

	COMM10 » Ten communication openings		PWR2-COMM5 » (2) single receptacle & (5) communication openings
	DP1 » Decora receptacle		PWR2-COMM6 » (2) single receptacle & (6) communication openings
	DP1-COMM4 » Decora receptacle & (4) communication openings		PWR4 » (4) single receptacle
	PASS-THROUGH » 2.5" trade size circular opening		PWR4-COMM4 » (4) single receptacle & (4) communication openings
	PWR2-COMM4 » (2) single receptacle & (4) communication openings		SYS-COMM » Systems furniture communication-power & comm cabling
	PWR2-COMM4-DB15 » (2) single receptacle & (4) communication openings & (1) DB-15 opening		AV-COMM4 » (1) Decora opening for CI-5BWPA & (4) communication openings

EXAMPLE:

For Recessed Poke Through » **MOI-REC-COMM10**
 For Recessed In-Slab » **MOI-SLB-REC-COMM10**

Commercial Floor Boxes

LEW ELECTRIC FITTINGS COMPANY
For more information, call 630-665-2075
www.lewelectric.com

48 >>>>>>

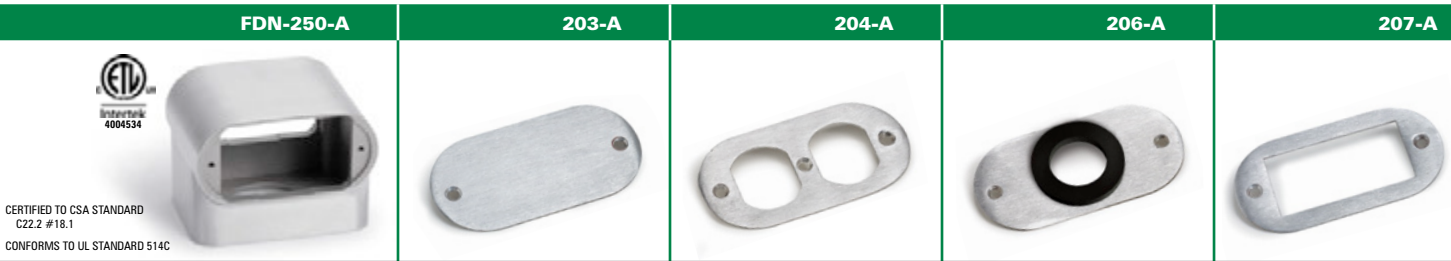
Access Boxes | 1101 Rectangular Boxes | 32 Round Boxes | Poke-Through/In-Slab | Nozzles



NOZZLES *FDN-250-A*

CATALOG #	DESCRIPTION	DIMENSIONS			STANDARD OPENINGS
		H	L	D	
FDN-250-A	Aluminum floor nozzle (Sand Casted Aluminum)	2 7/8"	4"	2 7/8"	3/4" (Also available in 1/2" or 1", please specify)
203-A ①	Blank nozzle plate				
204-A ①	Nozzle plate for duplex receptacle				
206-A ①	Nozzle plate for single receptacle or cable				
207-A ①	Nozzle plate for GFI receptacle				

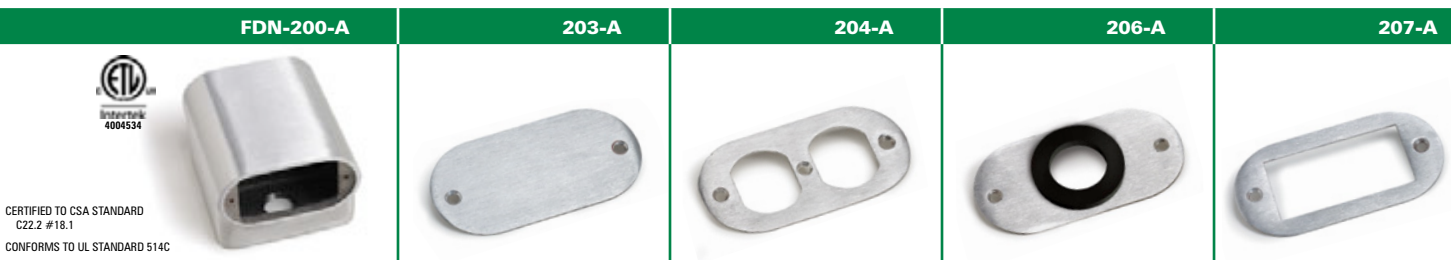
① Each Floor Nozzle requires two plates.



FDN-200-A

CATALOG #	DESCRIPTION	DIMENSIONS			STANDARD OPENINGS
		H	L	D	
FDN-200-A	Aluminum floor nozzle with partition (Die Cast Aluminum)	3"	4 3/4"	4 1/4"	(2) 3/4" (Threaded)
203-A ①	Blank nozzle plate				
204-A ①	Nozzle plate for duplex receptacle				
206-A ①	Nozzle plate for single receptacle or cable				
207-A ①	Nozzle plate for GFI receptacle				

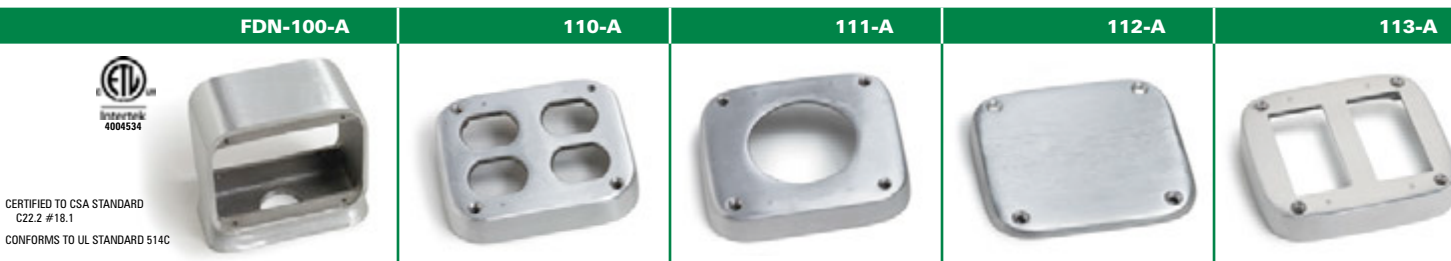
① Each Floor Nozzle requires two plates.



FDN-100-A

CATALOG #	DESCRIPTION	DIMENSIONS			STANDARD OPENINGS
		H	L	D	
FDN-100-A	Aluminum floor nozzle (Die Cast Aluminum) for up to (4) duplex receptacles (not included)	4 3/4"	4 1/4"	4 1/4"	1"
110-A ①	Nozzle plate will accommodate (2) duplex receptacles				
111-A ①	Nozzle plate will accommodate 30-50 AMP receptacle				
112-A ①	Blank nozzle plate				
113-A ①	Nozzle plate will accommodate (2) GFI receptacles				

① Each Floor Nozzle requires two plates.





DESKTOP BOXES

CATALOG #	DESCRIPTION
DTB-1-BK-1 ③	Pop-up desktop box includes 15 AMP (TR) duplex power/ 2USB receptacle & 6 port Comm./Data device »»» 14" L x 6 1/4" W x 5 1/8" H
BTK-6PB ② ③	Black 6 port Comm./Data device (max 3 CAT6 jacks)
L310-106BK ① ②	Black keystone jack; CAT3
L310-110BK ① ②	RJ45 Black CAT5E keystone jack; for internet or telephone
L310-420BK ① ②	Blank Black keystone cover
L310-HDMI-BK ① ②	HDMI Black keystone jack
L310-USB-BK ① ②	USB Black keystone jack ** Part #BTK-6PB, black 6 port device, will accommodate three USB keystone jacks in one row only.

- ① All keystone jacks are designed to be connected to plugs on both sides and not hard wired in the back
- ② Only for use with desktop box series
- ③ Max 3 CAT6 jacks per six port

DTB-1-BK-1



BTK-6PB



L310-106BK



L310-110BK



L310-420BK



L310-HDMI-BK



L310-USB-BK



Replacement Plugs

Product photos not to scale

6410-1/2

6410-1/2: 2"-1/2" combination plug

FITS COVERS:
 6304-S
 503
 524
 TCP-1



Finish Options

Brass » 6410-1/2 Aluminum » 6410-1/2-A

6410-3/4

6410-3/4: Brass 2"-3/4" combination plug

FITS COVERS:
 6304-S-3/4"
 524-3/4




Finish Options

Brass » 6410-3/4

6410-1

6410-1: Brass 2"-1" combination plug

FITS COVERS:
 6304-S-1"
 524-1"



Finish Options

Brass » 6410-1

6207

6207: Brass 2" close up plug

FITS COVERS:
 504



Finish Options

Brass » 6207

6208

6208: 1/2" close up plug

FITS COVERS:
 DFB-1-1/2"
 6304-S
 503
 524
 TCP-1



Finish Options

Brass » 6408 Aluminum » 6408-A

6210

6210: 3/4" close up plug

FITS COVERS:
 6304-S-3/4"
 524-3/4



Finish Options

Brass » 6410 Aluminum » 6410-A

6211

6211: 1" close up plug

FITS COVERS:
 6304-S-1"
 524-1"



Finish Options

Brass » 6211 Aluminum » 6211-A

6212

6212: 1 1/4" close up plug

FITS COVERS:
 RRP/SWB-2 or -4



Finish Options

Brass » 6212 Aluminum » 6212-A
 Nickel Silver » 6212-NS

6213

6213: 1 1/2" close up plug (duplex covers)

FITS COVERS:
 523-DP (812)
 6304-DP (1101)
 TCP-2



Finish Options


Brass » 6213 Aluminum » 6213-A
 Nickel Silver » 6213-NS

New color Available in combination
 Dark Bronze » 6213-DB

6213-BP

6213-BP: Plated 1 1/2" close up plug (for RRP-1-BP & SWB-1-BP ONLY)

FITS COVERS:
 RRP-1-BP
 SWB-1-BP



Finish Options

Brass » 6213-BP Nickel Plated » 6213-NP

6214

6214: 1 1/4" plug for RCFB series

FITS COVERS:
 RCFB-1
 RCFB-2



Finish Options

Brass » 6214 Aluminum » 6214-A
 Dark Bronze » 6214-DB

New color Available in combination

6215

6215: 1 1/2" close up plug


FITS COVERS:
 PBR-SPB
 RRP-2-SPB
 RRP-4-SPB
 RRP-6-SPB



Finish Options

Brass » 6215 Aluminum » 6215-A
 Dark Bronze » 6215-DB

New color Available in combination



Who We Are: We are the worldwide leader in providing safe and innovative floor boxes for residential and commercial use, providing floor boxes for homes, churches, airports and sports stadiums. We provide a solution for electrical needs where wall boxes are insufficient.

Guarantee: Centrally located just outside of Chicago, Illinois, Lew Electric Fittings Company guarantees the fastest shipping and delivery in the market. We also provide full time experts at the factory to answer any questions regarding any floor box issue.

Mission Statement: Providing the power where power is needed!

LEW ELECTRIC FITTINGS CO.

371 Randy Road; Carol Stream, IL 60188

PHONE: 630-665-2075

WWW.LEWELECTRIC.COM