



Weatherproof Products

Boxes

Lampholders

Garden Lights

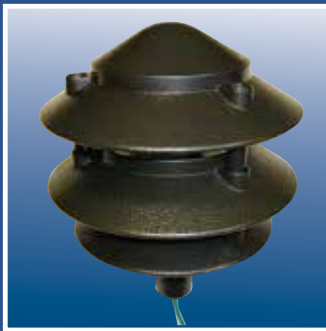
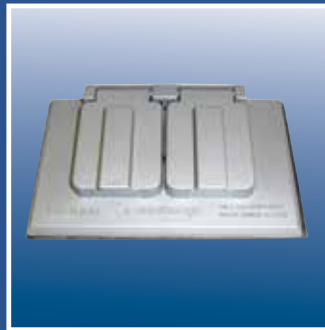
Pool Junction Boxes

Covers

In-Use Covers

Photocontrols

Accessories



Tel. 908.688.8850

Fax. 908.688.7294

www.MulberryMetal.com



Made In the USA



Over 85 Years of Quality and Service



Mulberry has been an industry leader for over 85 years, supplying the electrical trade with an extensive offering of wallplates, box covers, weatherproof, and conduit bodies. We are dedicated to manufacturing quality electrical products in the USA; almost all of our products are made here to assure customers of consistent quality and availability. Many of our products have innovations and features that have become industry standards.

As a family company, we pride ourselves on our product quality, broad selection and close customer relationships. Over 8,000 items, including many that our competitors consider custom, are in stock at our NJ factory or our regional warehouses.

Our mission is to offer distributors, contractors, and end-users the highest quality product, competitively priced and ready for quick delivery.

In addition to a comprehensive weatherproof line, we also offer metal and thermoplastic wallplates, galvanized steel box covers, and conduit bodies.



Mulberry Weatherproof

When U.S.-made weatherproof products are specified for the job or needed to meet an ARRA requirement, make Mulberry your first choice!

Practically every weatherproof product described in this catalog is manufactured right here in the USA!

In addition, we offer:

- Superior quality casting, tapping and finishing
- The industry's most comprehensive weatherproof line, with over 350 items in stock and ready for immediate shipment
- Special configurations and colors
- Unique product features such as the attached rotating lugs on our 1-gang weatherproof boxes that are designed to speed installation



Quality products designed to protect wiring devices, switches and other electrical connections from dirt, dust and moisture. Choose from a wide assortment of:

- Boxes
- In-Use Covers
- Covers
- Lampholders
- Photocontrols

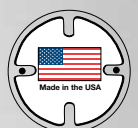


Table of Contents



Boxes

Single Gang Boxes	B4 - 5
One Gang Deep Boxes	B5
Two Gang Lug Boxes	B6
Two Gang Deep Boxes	B7
Three Gang Boxes	B7
4" Round Boxes and Extensions	B8
Swimming Pool Junction Boxes	B8
Box Extensions	B9
Flanged Style Takeoff Extensions	B9

Covers

WeatherSafe In-Use Covers	B10
Die-Cast In-Use Covers	B11
Self-Closing Covers	B12 - 14
4" Round Covers	B15
Rectangular Covers	B16
Blank Covers	B17
Toggle Switch Covers	B18 - 19
Slip Fitters	B20

Lampholders

Die-Cast Lampholders	B21 - 23
Con-O-Shade	B23
Floodlighting Kits	B24
Garden Lights	B24

Photocontrols

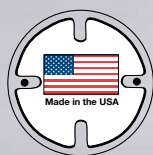
Direct Wire-In Photocontrols	B25 - 26
Locking-Type Photocontrols	B27
Pencil-Type Photocontrols	B28

Accessories and Replacement Parts

B29 - 31

Index by Catalog Number

B32



Look for our 'Made-in-the-USA' symbol.

Product series that display our above symbol are made in the U.S.A. and comply with the Buy American Act.

For more information or documentation, contact us.

Mulberry Single Gang Box

The most versatile weatherproof box in the industry

Superior Quality. U.S.-Made. ARRA Compliant.

Rotating Lugs

Permanently Attached Lugs rotate for maximum mounting versatility—available when needed or out of the way when not.

Superior Powder Finish

State-of-the-art powder coat paint finish assures maximum weatherability.

Available in Gray, White, Bronze or Black.



Cat. No. 30203

Easy Access Ground Screw

Tapped ground screw hole conveniently located along the surface of our mounting strap provides easier ground screw installation.

Heavy-Duty Mounting Straps

Reinforced and securely fastened mounting straps provide the most durable design in the industry.

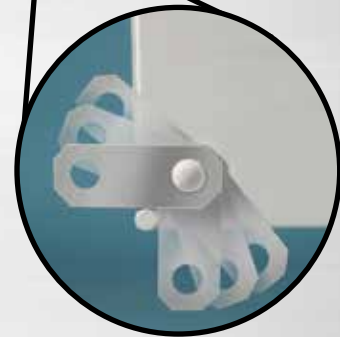
Patented mounting design allows strap to exceed all applicable UL pull-tests. (U.S. Patent No. 7,232,951)

Permanently Attached Lugs

No more detachable lugs!

Never drop, lose or install a lug again.

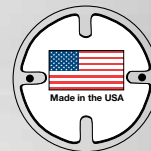
Speeds installation!



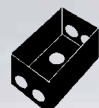
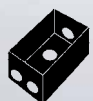
Single Gang Boxes

Suitable for wet locations

- All 1-gang boxes available with or without attached swivel lugs.
- 2.75" x 4.5" x 2.0" deep.
- Heavy duty die-cast aluminum, .094" thick, with powder finish.
- For use in all indoor and outdoor damp or wet locations, with all standard FS, outlet, lampholder or splice box covers.
- Ground screw and 2 close-up plugs supplied with each box.
- Pre-tapped ground screw hole.
- UL Listed.
- Comply with Federal Specification AA-50563.
- All of the boxes on pages B4 and B5 are made in the U.S.A.



With Permanently Attached Mounting Lugs

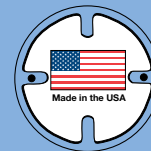


Catalog No.	No. Outlets	Location	Hub Size	Color	Lugs	Cubic Capacity	Carton Quantity	Weight per 100 units
30203	3	1 in each end, 1 in back	1/2"	Gray	Yes	18.3	25	52 lbs.
30203B	3	1 in each end, 1 in back	1/2"	Black	Yes	18.3	25	52 lbs.
30203W	3	1 in each end, 1 in back	1/2"	White	Yes	18.3	25	52 lbs.
30203Z	3	1 in each end, 1 in back	1/2"	Bronze	Yes	18.3	25	52 lbs.
30206	3	1 in each end, 1 in back	3/4"	Gray	Yes	18.3	25	60 lbs.
30206W	3	1 in each end, 1 in back	3/4"	White	Yes	18.3	25	60 lbs.
30206Z	3	1 in each end, 1 in back	3/4"	Bronze	Yes	18.3	25	60 lbs.
30209	4	2 in 1 end, 1 in the other, 1 in back	1/2"	Gray	Yes	18.0	25	60 lbs.
30209W	4	2 in 1 end, 1 in the other, 1 in back	1/2"	White	Yes	18.0	25	60 lbs.
30209Z	4	2 in 1 end, 1 in the other, 1 in back	1/2"	Bronze	Yes	18.0	25	60 lbs.
30212	4	2 in 1 end, 1 in the other, 1 in back	3/4"	Gray	Yes	18.0	25	58 lbs.
30212W	4	2 in 1 end, 1 in the other, 1 in back	3/4"	White	Yes	18.0	25	58 lbs.
30212Z	4	2 in 1 end, 1 in the other, 1 in back	3/4"	Bronze	Yes	18.0	25	58 lbs.
30215	5	2 in each end, 1 in back	1/2"	Gray	Yes	18.0	25	60 lbs.
30215W	5	2 in each end, 1 in back	1/2"	White	Yes	18.0	25	60 lbs.
30215Z	5	2 in each end, 1 in back	1/2"	Bronze	Yes	18.0	25	60 lbs.
30218	5	2 in each end, 1 in back	3/4"	Gray	Yes	18.0	25	56 lbs.
30221	5	1 in each end, 1 each side, 1 in back	1/2"	Gray	Yes	18.0	25	60 lbs.
30224	5	1 in each end, 1 each side, 1 in back	3/4"	Gray	Yes	18.0	25	58 lbs.
30227	6	1 in each end, 2 in 1 side, 1 in other side, 1 in back	1/2"	Gray	Yes	18.0	25	62 lbs.
30228	6	1 in each end, 2 in 1 side, 1 in other side, 1 in back	3/4"	Gray	Yes	18.0	25	58 lbs.



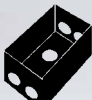
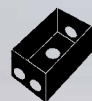
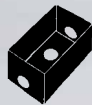
Single Gang Boxes

Suitable for wet locations



BOXES

Without Mounting Lugs

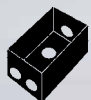
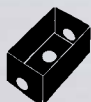
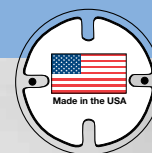


Catalog No.	No. Outlets	Location	Hub Size	Color	Lugs	Cubic Capacity	Carton Quantity	Weight per 100 units
30201	3	1 in each end, 1 in back	1/2"	Gray	No	18.3	25	52 lbs.
30201B	3	1 in each end, 1 in back	1/2"	Black	No	18.3	25	52 lbs.
30201W	3	1 in each end, 1 in back	1/2"	White	No	18.3	25	52 lbs.
30201Z	3	1 in each end, 1 in back	1/2"	Bronze	No	18.3	25	52 lbs.
30204	3	1 in each end, 1 in back	3/4"	Gray	No	18.3	25	60 lbs.
30204W	3	1 in each end, 1 in back	3/4"	White	No	18.3	25	60 lbs.
30204Z	3	1 in each end, 1 in back	3/4"	Bronze	No	18.3	25	60 lbs.
30207	4	2 in 1 end, 1 in the other, 1 in back	1/2"	Gray	No	18	25	60 lbs.
30207W	4	2 in 1 end, 1 in the other, 1 in back	1/2"	White	No	18	25	60 lbs.
30207Z	4	2 in 1 end, 1 in the other, 1 in back	1/2"	Bronze	No	18	25	60 lbs.
30210	4	2 in 1 end, 1 in the other, 1 in back	3/4"	Gray	No	18	25	58 lbs.
30210W	4	2 in 1 end, 1 in the other, 1 in back	3/4"	White	No	18	25	58 lbs.
30210Z	4	2 in 1 end, 1 in the other, 1 in back	3/4"	Bronze	No	18	25	58 lbs.
30213	5	2 in each end, 1 in back	1/2"	Gray	No	18	25	60 lbs.
30213W	5	2 in each end, 1 in back	1/2"	White	No	18	25	60 lbs.
30213Z	5	2 in each end, 1 in back	1/2"	Bronze	No	18	25	60 lbs.
30216	5	2 in each end, 1 in back	3/4"	Gray	No	18	25	56 lbs.
30219	5	1 in each end, 1 each side, 1 in back	1/2"	Gray	No	18	25	60 lbs.
30222	5	1 in each end, 1 each side, 1 in back	3/4"	Gray	No	18	25	58 lbs.
30226	6	1 in each end, 2 in 1 side, 1 in other side, 1 in back	1/2"	Gray	No	18	25	62 lbs.

One Gang Deep Boxes

Suitable for wet locations

- All 1-gang deep boxes come with detachable lugs, 2 close-up plugs, and self-tapping ground screw.
- 2.75" x 4.5" x 2.625" deep.
- Heavy duty die-cast aluminum, .094" thick, with powder finish.
- UL Listed for the United States and Canada.
- Ground screw hole is in bottom of box.

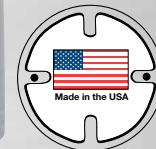


Catalog No.	No. Outlets	Location	Hub Size	Color	Cubic Capacity	Carton Quantity	Weight per 100 units
30583	3	1 in each end, 1 in back	1/2"	Gray	24.0	10	90 lbs.
30584	3	1 in each end, 1 in back	3/4"	Gray	24.0	10	90 lbs.
30589	3	1 in each end, 1 in back	1"	Gray	24.0	10	90 lbs.
30586	4	2 in 1 end, 1 in the other, 1 in back	1/2"	Gray	24.0	10	90 lbs.
30587	4	2 in 1 end, 1 in the other, 1 in back	3/4"	Gray	24.0	10	90 lbs.

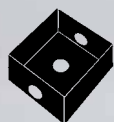


Two Gang Lug Boxes

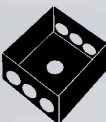
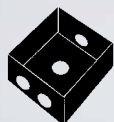
Suitable for wet locations



- All 2-gang boxes come with detachable lugs, 2 close-up plugs, and self-tapping ground screw.
- 4.5" x 4.5" x 2.0" deep.
- Heavy duty die-cast aluminum, .094" thick, with powder finish.
- For use in all indoor and outdoor damp or wet locations, with all standard FS, outlet, lampholder or splice box covers.
- UL Listed for the United States and Canada.
- Comply with Federal Specification AA-50563
- All of the boxes on this page are made in the U.S.A.



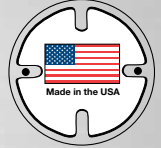
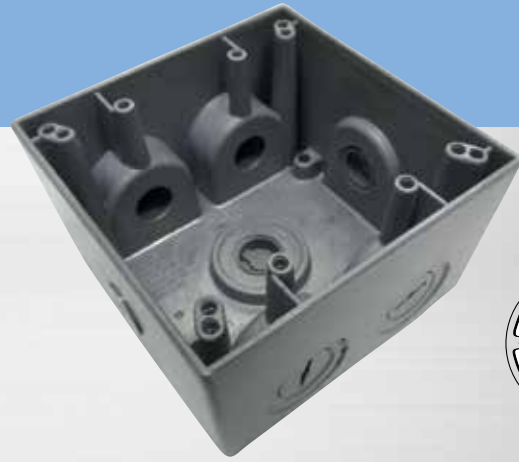
Catalog No.	No. Outlets	Location	Hub Size	Color	Cubic Capacity	Carton Quantity	Weight per 100 units
30233	3	1 in each end, 1 in back	1/2"	Gray	30.5"	10	110 lbs.
30233W	3	1 in each end, 1 in back	1/2"	White	30.5"	10	110 lbs.
30233Z	3	1 in each end, 1 in back	1/2"	Bronze	30.5"	10	110 lbs.
30236	3	1 in each end, 1 in back	3/4"	Gray	30.5"	10	110 lbs.
30236W	3	1 in each end, 1 in back	3/4"	White	30.5"	10	110 lbs.
30236Z	3	1 in each end, 1 in back	3/4"	Bronze	30.5"	10	110 lbs.
30267	3	1 in each end, 1 in back	1"	Gray	30.5"	10	110 lbs.
30267W	3	1 in each end, 1 in back	1"	White	30.5"	10	110 lbs.
30267Z	3	1 in each end, 1 in back	1"	Bronze	30.5"	10	110 lbs.
30239	4	2 in one end, 1 in other end, 1 in back	1/2"	Gray	30.5"	10	110 lbs.
30239W	4	2 in one end, 1 in other end, 1 in back	1/2"	White	30.5"	10	110 lbs.
30239Z	4	2 in one end, 1 in other end, 1 in back	1/2"	Bronze	30.5"	10	110 lbs.
30242	4	2 in one end, 1 in other end, 1 in back	3/4"	Gray	30.5"	10	110 lbs.
30245	5	2 in each end, 1 in back	1/2"	Gray	30.5"	10	110 lbs.
30245W	5	2 in each end, 1 in back	1/2"	White	30.5"	10	110 lbs.
30245Z	5	2 in each end, 1 in back	1/2"	Bronze	30.5"	10	110 lbs.
30248	5	2 in each end, 1 in back	3/4"	Gray	30.5"	10	110 lbs.
30251	5	1 in each end, 1 in each side, 1 in back	1/2"	Gray	30.5"	10	110 lbs.
30254	5	1 in each end, 1 in each side, 1 in back	3/4"	Gray	30.5"	10	110 lbs.
30270	5	1 in each end, 1 in each side, 1 in back	1"	Gray	30.5"	10	110 lbs.
30257	6	2 in one end, 1 in other end, 1 in each side, 1 in back	1/2"	Gray	30.5"	10	110 lbs.
30260	6	2 in one end, 1 in other end, 1 in each side, 1 in back	3/4"	Gray	30.5"	10	110 lbs.
30263	7	2 in each end, 1 in each side, 1 in back	1/2"	Gray	30.5"	10	110 lbs.
30266	7	2 in each end, 1 in each side, 1 in back	3/4"	Gray	30.5"	10	110 lbs.
30269	7	3 in each end, 1 in back	1/2"	Gray	30.5"	10	110 lbs.
30272	7	3 in each end, 1 in back	3/4"	Gray	30.5"	10	110 lbs.



Two Gang Deep Boxes

Suitable for wet locations

- All 2-gang deep boxes come with detachable lugs, 2 close-up plugs, and self-tapping ground screw.
- 4.5" x 4.5" x 2.625" deep.
- Heavy duty die-cast aluminum, .094" thick, with powder finish.
- UL Listed for the United States and Canada.
- All of the boxes on page are made in the U.S.A.



Catalog No.	No. Outlets	Location	Hub Size	Color	Cubic Capacity	Carton Quantity	Weight per 100 units
30593	5	2 in each end, 1 in back	1/2"	Gray	37.3"	10	130 lbs.
30595	5	2 in each end, 1 in back	3/4"	Gray	37.3"	10	130 lbs.
30596	5	2 in each end, 1 in back	1"	Gray	37.3"	10	130 lbs.
30597	7	2 in each end, 1 in each side, 1 in back	1/2"	Gray	37.3"	10	130 lbs.
30598	7	2 in each end, 1 in each side, 1 in back	3/4"	Gray	37.3"	10	130 lbs.
30599	7	2 in each end, 1 in each side, 1 in back	1"	Gray	37.3"	10	130 lbs.

Three Gang Deep Boxes

Suitable for wet locations

- All 3-gang boxes come with detachable lugs, 2 close-up plugs, and self-tapping ground screw.
- 4.5" x 6.375" x 2.625" deep.
- Heavy duty die-cast aluminum, .094" thick, with powder finish.
- For use in all indoor and outdoor damp and wet locations, with all standard FS, outlet, or splice box covers.
- UL Listed for the United States and Canada.
- Meets all applicable Federal specifications.
- All of the boxes on this page are made in the U.S.A.

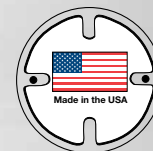


Catalog No.	No. Outlets	Location	Hub Size	Color	Cubic Capacity	Carton Quantity	Weight per 100 units
30601	7	3 in each end, 1 in back	3/4"	Gray	59.8"	10	150 lbs.
30603	7	3 in each end, 1 in back	1"	Gray	59.8"	10	150 lbs.

4" Round Boxes and Extensions

Suitable for wet locations

- Boxes and extensions 1-1/2" deep.
- All round boxes have 5 outlets; extensions have 4.
- Heavy duty die-cast aluminum with powder finish.
- Boxes supplied with 4 close-up plugs and #10 green ground screw.
- Extensions supplied with gasket, 4 close-up plugs, 2 stainless steel mounting screws, and #10 green ground screw.
- UL Listed for the United States and Canada.
- Meets all applicable Federal specifications.
- All round boxes and extensions are made in the U.S.A.



Catalog No.	Location	Hub Size	Color	Cubic Capacity	Box only or w/Gasket & Cover	Carton Quantity	Weight per 100 units
30316	4 in sides end 1 in back	1/2"	Gray	15.3"	Box	10	70 lbs.
30316B	4 in sides end 1 in back	1/2"	Black	15.3"	Box	10	70 lbs.
30316W	4 in sides end 1 in back	1/2"	White	15.3"	Box	10	70 lbs.
30316Z	4 in sides end 1 in back	1/2"	Bronze	15.3"	Box	10	70 lbs.
30318	4 in sides end 1 in back	1/2"	Gray	15.3"	With gasket & cover	10	80 lbs.
30318W	4 in sides end 1 in back	1/2"	White	15.3"	With gasket & cover	10	80 lbs.
30318Z	4 in sides end 1 in back	1/2"	Bronze	15.3"	With gasket & cover	10	80 lbs.
30326	4 in sides end 1 in back	3/4"	Gray	15.3"	Box	10	70 lbs.
30326W	4 in sides end 1 in back	3/4"	White	15.3"	Box	10	70 lbs.
30326Z	4 in sides end 1 in back	3/4"	Bronze	15.3"	Box	10	70 lbs.
30328	4 in sides end 1 in back	3/4"	Grey	15.3"	With gasket & cover	10	84 lbs.
30328W	4 in sides end 1 in back	3/4"	White	15.3"	With gasket & cover	10	84 lbs.
30328Z	4 in sides end 1 in back	3/4"	Bronze	15.3"	With gasket & cover	10	84 lbs.
30333	4 in sides	1/2"	Gray	15.3"	Box extension	10	60 lbs.
30335	4 in sides	3/4"	Gray	15.3"	Box extension	10	60 lbs.

Swimming Pool Junction Boxes

- Meet NEC Article 680 requirements.
- Solid brass base and specially formulated gasket.
- Lexan 503® nonconductive, watertight cover, UV-stabilized.
- Bonding wire pressure connector on one grounding post complies with Article 110-14(a) of the 1978 NEC.
- Four grounding posts (green screws).
- Continuous sealing ridge keeps interior dry.
- Four brass mounting screws; hardware included.

Catalog No.	No./Hub Sizes	Cubic Capacity	Carton Quantity	Weight per 100 units
30385	3-1/2" hubs	22.0"	12	155 lbs.
30387	2-3/4" hubs, 1-1" hub	22.0"	12	155 lbs.
30389	3-3/4" hubs	22.0"	12	155 lbs.

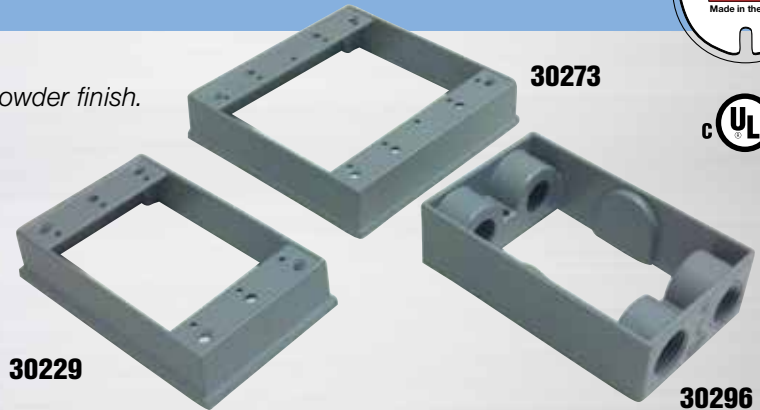


Box Extensions

Suitable for wet locations



- Fit all universal-type weatherproof boxes.
- Heavy duty die-cast aluminum, .094" thick, with powder finish.
- UL Listed for the United States and Canada.
- Gasket and mounting screws included.
- All of the box extensions are made in the U.S.A.

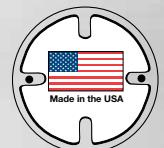


Catalog No.	No. of Gangs	Dimensions	Outlets	Cubic Capacity	Carton Quantity	Weight per 100 units
30229	1	2.75" x 4.5" x 1.0"	None	9.3"	25	28 lbs.
30273	2	4.5" x 4.5" x 1.0"	None	16.3"	10	50 lbs.
30230	1	2.75" x 4.5" x 1.25"	Four 1/2" outlets, 2 in each end	9.5"	25	62 lbs.
30287	1	2.75" x 4.5" x 1.25"	Four 3/4" outlets, 2 in each end	9.5"	25	62 lbs.
30295	1	2.75" x 4.5" x 1.25"	Six 1/2" outlets, 2 in each end and 1 in each side	9.5"	25	62 lbs.
30296	1	2.75" x 4.5" x 1.25"	Six 3/4" outlets, 2 in each end and 1 in each side	9.5"	25	62 lbs.

Flanged Style Takeoff Extensions

Suitable for wet locations

- Provide an additional 10 cubic inches.
- Allow take-off in up to four directions for lighting, outlets, or switches.
- Heavy duty die-cast aluminum with powder finish.
- 2 close-up plugs, gaskets, and mounting screws included.
- UL Listed for the United States and Canada.



Catalog No.	No. of Outlets	Cubic Capacity	Carton Quantity	Weight per 100 units
30274	Four 1/2" outlets, 2 in each end	10.0"	10	70 lbs.
30288	Four 3/4" outlets, 2 in each end	10.0"	10	70 lbs.
30275	Six 1/2" outlets, 2 in each end and 1 in each side	10.0"	10	70 lbs.
30289	Six 3/4" outlets, 2 in each end and 1 in each side	10.0"	10	70 lbs.



7-In-1 WeatherSafe In-Use Covers

7 Configurations from 3 Base Plates

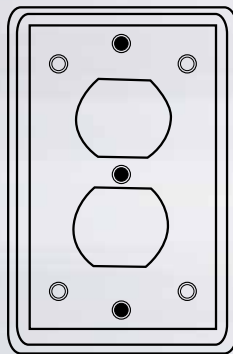
Suitable for wet locations

- Three base plates for multiple applications.
- Easy to install—just screw in plate and snap on cover.
- No confusing inserts to assemble.
- Rugged Polycarbonate cover and base plate offer maximum durability.
- Clear cover with lockable hasp.
- Include gasket and mounting hardware.
- FS or flush mounting.
- Units with a 3½" deep lid will accommodate up to a 12-3 cord.
- NEMA 3R rated. UL Listed.
- Meet National Electric Code 406.8 (B) for wet locations.
- In point-of-purchase packaging for self-merchandising.
- For extra covers sold separately, please see page B30.
- Made in the U.S.A.

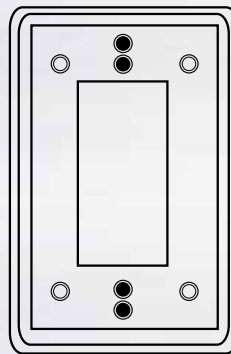


Catalog No.	Cover	Depth	Style	Size	Configurations	Carton Quantity	Weight per 100 units
30919	Deep	3-1/2"	Horizontal	1-gang	Duplex, GFI, toggle and (4) round device openings*	10	52 lbs.
30920	Deep	3-1/2"	Vertical	1-gang	Duplex, GFI, toggle and (4) round device openings*	10	52 lbs.
30921	Shallow	2-1/2"	Horizontal	1-gang	Duplex, GFI, toggle and (4) round device openings*	10	46 lbs.
30922	Shallow	2-1/2"	Vertical	1-gang	Duplex, GFI, toggle and (4) round device openings*	10	46 lbs.
30940	Shallow	2-1/4"	Vertical	2-gang	Duplex, GFI, toggle and (2) round device openings. 70 configurations from 6 inserts.	10	52 lbs.

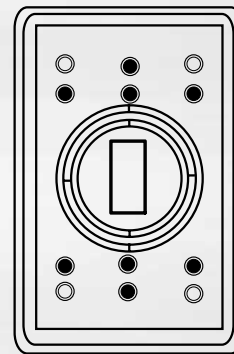
Each unit comes standard with the following three adapter plates



Duplex



GFI



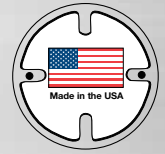
Toggle
1-3/8"
1-3/4"
2-1/4"
Single receptacle
openings

NOTE: 1-gang in-use covers are available with just one base plate or a base plate that has a custom opening. Consult factory.



Die-Cast Aluminum In-Use Covers

- Heavy-duty die-cast aluminum construction helps protect against vandalism.
- Standard with both Duplex and GFI Base Plate (except 30934).
- Comes with adhesive backed gasket and four mounting screws.
- Available with either a Grey or White powder coat finish.
- Lockable cover protects against electrical accidents and tampering.
- Adapter plate with a 1.625" receptacle opening also available.
- NEMA 3R rated.
- UL Listed for the United States and Canada.
- Made in the U.S.A.

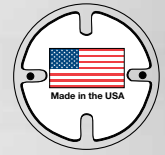
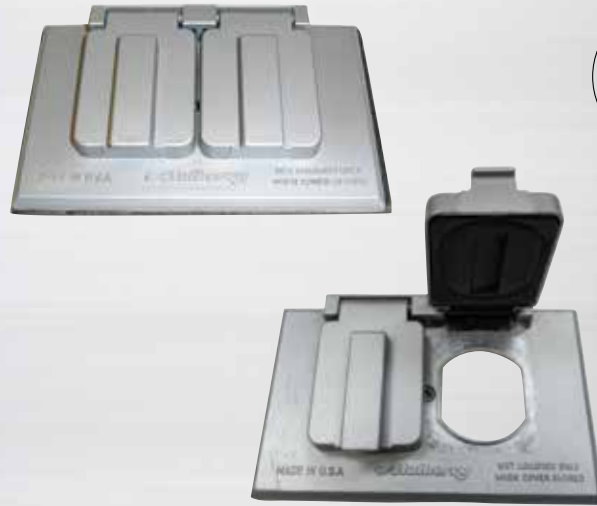


Catalog No.	Color	Size	Depth	Orientation	Configurations	Carton Quantity	Weight per 100 units
30936	Grey	1-gang	3-1/2"	Vertical	Duplex and GFI	10	1.25 lbs.
30936W	White	1-gang	3-1/2"	Vertical	Duplex and GFI	10	1.25 lbs.
30935	Grey	1-gang	3-1/2"	Horizontal	Duplex and GFI	10	1.25 lbs.
30935W	White	1-gang	3-1/2"	Horizontal	Duplex and GFI	10	1.25 lbs.
30934*	Grey	1-gang	3-1/2"	Vertical	1.625 inch opening	10	1.05 lbs.

*Catalog No. 30934 comes with just one adapter plate that has a 1.625" opening.

1-Gang Self-Closing Covers

- Heavy-duty die-cast zinc.
- Choice of either horizontal or vertical orientation.
- Gaskets and screws included.
- Duplex covers accept all standard duplex receptacles and combination devices.
- Single receptacle covers accept all standard single receptacles and combination devices.
- UL Listed for the United States and Canada.
- All of the covers on this page are made in the U.S.A.



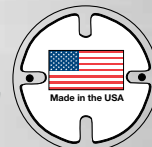
Catalog No.	Opening	Orientation	Color	Carton Quantity	Weight per 100 units
30451**	GFI	Horizontal	Gray	25	44 lbs.
30451W**	GFI	Horizontal	White	25	44 lbs.
30451Z**	GFI	Horizontal	Bronze	25	44 lbs.
30501†	Duplex	Horizontal	Gray	25	40 lbs.
30501U†	Duplex	Horizontal	Natural Cast	25	40 lbs.
30501W†	Duplex	Horizontal	White	25	40 lbs.
30501Z†	Duplex	Horizontal	Bronze	25	40 lbs.
30505	1.405" Single	Horizontal	Gray	25	30 lbs.
30505W	1.405" Single	Horizontal	White	25	30 lbs.
30505Z	1.405" Single	Horizontal	Bronze	25	30 lbs.
30507	1.620"	Horizontal	Gray	25	30 lbs.
30509	1.405" Single	Vertical	Gray	25	30 lbs.
30509W	1.405" Single	Vertical	White	25	30 lbs.
30509Z	1.405" Single	Vertical	Bronze	25	30 lbs.
30550*	Duplex	Vertical	Gray	25	36 lbs.
30550W*	Duplex	Vertical	White	25	36 lbs.
30550Z*	Duplex	Vertical	Bronze	25	36 lbs.
30552*	1.405" Single	Vertical	Gray	25	36 lbs.
30552W*	1.405" Single	Vertical	White	25	36 lbs.
30552Z*	1.405" Single	Vertical	Bronze	25	36 lbs.
30554*	GFI	Vertical	Gray	25	36 lbs.
30554W*	GFI	Vertical	White	25	36 lbs.
30554Z*	GFI	Vertical	Bronze	25	36 lbs.

* Solid aluminum base plate with heavy-duty die-cast lid.
30451 & 30501 Series are cULus Listed for use in the United States and Canada.



Vertical Self-Closing Covers with lock hasps

- Heavy duty die-cast aluminum, .094" thick with powder finish.
- Stainless steel springs, screws, and shaft.
- Durable heavy-duty gasket.
- Meets all Federal specifications.
- Lock hasp diameter ¼".
- Specials available upon request (for 1-gang special, please use item #30560).
- UL Listed.
- All covers on this page are made in the USA. The plug-in receptable that is supplied with our 30513 cover, however, is not.

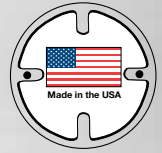


Catalog No.	Opening/Description	Mounting	Carton Quantity	Weight per 100 units
30522 30522W 30522Z	All duplex receptacles and combination devices (Also available in white & bronze)	Standard	25	48 lbs.
30523	All duplex receptacles and combination devices	4-screw (FS)	25	48 lbs.
30525	Standard single receptacles (1.405" diam.)	Standard	25	48 lbs.
30526	Standard single receptacles (1.405" diam.)	4-screw (FS)	25	48 lbs.
30528	20A and 30A TL receptacles (1.625" diam.)	Standard	25	48 lbs.
30529	20A and 30A TL receptacles (1.625" diam.)	4-screw (FS)	25	48 lbs.
30531	30A 3- and 4-wire TL receptacles (1.75" diam.)	Standard	25	48 lbs.
30532	30A 3- and 4-wire TL receptacles (1.75" diam.)	4-screw (FS)	25	48 lbs.
30534	30A and 50A range/dryer receptacles (2.125" diam.)	Standard	25	48 lbs.
30535	30A and 50A range/dryer receptacles (2.125" diam.)	4-screw (FS)	25	48 lbs.
30537 30537W 30537Z	GFI receptacles (Also available in white & bronze)	Standard	25	48 lbs.
30538	GFI receptacles	4-screw (FS)	25	48 lbs.

Motor Base Receptacle and Self-closing cover for mobile homes

Catalog No.	Opening/Description	Carton Quantity	Weight per 100 units
30513	Horizontal self-closing cover No. 30507 with 2-screw mounting. Comes with receptacle rated at 15A-125V; with male device 30-wire U ground parallel blades.	100	45 lbs.

Self-Closing 2 and 3 Gang Device Covers



- Solid aluminum plate.
- Heavy duty die-cast lid with powder finish.
- Stainless steel screws.
- Durable heavy duty universal gasket.
- The broadest selection of combinations in the industry.
- Specials available upon request
(for 2-gang special, please use item #30450; for 3-gang, #30460)
- Cover only unless otherwise specified.
- White and bronze covers, and 4-10 gang self-closing covers are available. Consult factory.
- UL Listed for the United States and Canada.
- All of the covers on this page are made in the U.S.A.

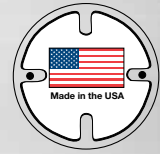
	Catalog No.	Opening/Description	Carton Quantity	Weight per 100 units
	30458	2 gang duplex: for all duplex receptacles and combination devices	10	70 lbs.
	30461	2gang single receptacle: for all 1.405" singles and toggle switches	10	70 lbs.
	30452	2 gang GFI: for all block-style GFI and duplex receptacles	10	70 lbs.
	30426	2 gang blank/toggle: one side blank, 1 for toggle	10	50 lbs.
	30427	2 gang blank/duplex: one side blank, 1 for duplex receptacle	10	50 lbs.
	30428	2 gang blank/single receptacle: 1 side blank, 1 for 1.405" single	10	50 lbs.
	30429	2 gang blank/GFI: 1 side blank, 1 for GFI receptacle	10	50 lbs.
	30468	2 gang duplex/single: for duplex, and single receptacle or switch	10	70 lbs.
	30472	2 gang duplex/GFI: for duplex, and block-style GFI or duplex	10	70 lbs.
	30470	2 gang single/GFI: for single receptacle, and block-style GFI or duplex	10	70 lbs.
	30457	2 gang switch/GFI: for toggle switch, and block-style GFI or duplex	10	70 lbs.
	30456	2 gang toggle/duplex: for switch, and duplex. Mounting hardware included	10	80 lbs.
	30455	2 gang toggle/duplex: for single pole switch and duplex Switch (rating 5A-250V, 10A-125V) and receptacle (15A-125V) included	10	80 lbs.
	30495	2 gang toggle/single: for switch, and pilot light. Mounting hardware included and red jewel installed	10	80 lbs.
	30464	3 gang duplex: for all duplex receptacles and combination devices	10	100 lbs.
	30465	3 gang single receptacle: for all 1.405" singles and toggle switches	10	110 lbs.
	30473	3 gang GFI: for all block-style GFI and duplex receptacles	10	110 lbs.
	30466	3 gang 2 duplex/single: for 2 duplexes, and single receptacle or switch	10	100 lbs.
	30467	3 gang duplex/2 single: for duplex, and 2 single receptacles or switches	10	110 lbs.
	30475	3 gang 2 single/GFI: for 2 singles or switches, and 1 block-style receptacle	10	100 lbs.
	30477	3 gang single/2 GFI: for single or switch, and 2 block-style receptacles	10	100 lbs.
	30479	3 gang 2 toggle/duplex: for 2 switches, and one duplex receptacle. Mounting hardware included	10	80 lbs.



4" Round Covers

Suitable for wet locations

- Heavy duty die-cast zinc with powder finish.
- Blank cover is stamped aluminum.
- Die-cast 1, 2, and 3 hole covers are UL Listed for use in the United States and Canada.
- Meets all Federal specifications.
- Round covers supplied with gasket and stainless steel mounting screws.
- 3-hole cover includes 1 close-up plug.
- All of the covers on this page are made in the U.S.A.

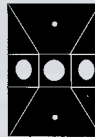
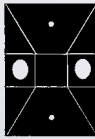
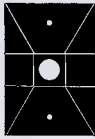
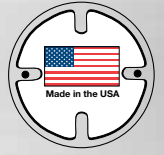


Catalog No.	Outlets	Color	Carton Quantity	Weight per 100 units
30367	One 1/2" tapped hole	Gray	25	36 lbs.
30367B	One 1/2" tapped hole	Black	25	36 lbs.
30367W	One 1/2" tapped hole	White	25	36 lbs.
30367Z	One 1/2" tapped hole	Bronze	25	36 lbs.
30372	Two 1/2" tapped holes	Gray	25	32 lbs.
30372B	Two 1/2" tapped holes	Black	25	32 lbs.
30372W	Two 1/2" tapped holes	White	25	32 lbs.
30372Z	Two 1/2" tapped holes	Bronze	25	32 lbs.
30377	Three 1/2" tapped holes	Gray	25	36 lbs.
30377B	Three 1/2" tapped holes	Black	25	36 lbs.
30377W	Three 1/2" tapped holes	White	25	36 lbs.
30377Z	Three 1/2" tapped holes	Bronze	25	36 lbs.
30381	Blank cover with gasket	Gray	100	17 lbs.
30381W	Blank cover with gasket	White	100	17 lbs.
30381Z	Blank cover with gasket	Bronze	100	17 lbs.

Rectangular Covers

Suitable for wet locations

- Heavy duty die-cast zinc with powder finish.
- UL Listed for use in the United States and Canada.
- Meets all Federal specifications.
- Rectangular covers supplied with gasket and stainless steel mounting screws.
- 3-hole cover includes 1 close-up plug.
- All of the covers on this page are made in the USA.

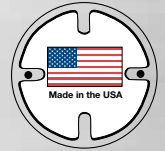


Catalog No.	Outlets	Color	Carton Quantity	Weight per 100 units
30351	One ½" tapped hole	Gray	25	28 lbs.
30351B	One ½" tapped hole	Black	25	28 lbs.
30351W	One ½" tapped hole	White	25	28 lbs.
30351Z	One ½" tapped hole	Bronze	25	28 lbs.
30356	Two ½" tapped holes	Gray	25	32 lbs.
30356B	Two ½" tapped holes	Black	25	32 lbs.
30356W	Two ½" tapped holes	White	25	32 lbs.
30356Z	Two ½" tapped holes	Bronze	25	32 lbs.
30361	Three ½" tapped holes	Gray	25	32 lbs.
30361B	Three ½" tapped holes	Black	25	32 lbs.
30361W	Three ½" tapped holes	White	25	32 lbs.
30361Z	Three ½" tapped holes	Bronze	25	32 lbs.

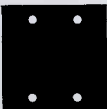
Blank Covers

Suitable for wet locations

- .040" aluminum with anodized aluminum finish.
- .040" brass with baked aluminum finish.
- Gasket and stainless steel mounting screws included.
- UL Listed.
- 4 – 10 gang covers are available as custom items, please consult the factory.
- All of the covers on this page are made in the U.S.A.



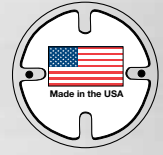
Catalog No.	Gangs	Mounting	Material	Color	Carton Quantity	Box Quantity	Weight per 100 units
30278	1	Standard	.040" Aluminum	Gray	20	200	9 lbs.
30278W	1	Standard	.040" Aluminum	White	20	200	9 lbs.
30278Z	1	Standard	.040" Aluminum	Bronze	20	200	9 lbs.
30279	1	4-screw (FS)	.040" Aluminum	Gray	20	200	9 lbs.
30277	1	Standard	.040" Brass	Gray	20	200	21 lbs.
30283	2	Standard	.040" Aluminum	Gray	10	100	15 lbs.
30283W	2	Standard	.040" Aluminum	White	10	100	15 lbs.
30283Z	2	Standard	.040" Aluminum	Bronze	10	100	15 lbs.
30282	2	Standard	.040" Brass	Gray	10	100	33 lbs.
30284	3	Standard	.040" Aluminum	Gray	5	50	25 lbs.
30286	3	Standard	.040" Brass	Gray	5	50	40 lbs.



Toggle Switch Covers

Suitable for wet locations

- Solid aluminum plate, .040" thick, with powder finish.
- Heavy duty die-cast handles.
- Durable, heavy duty universal gasket.
- Stainless steel screws.
- UL Listed and CSA Approved.
- Plates supplied with single pole switches are embossed ON/OFF.
- Plates supplied with 3-way kits or without switches are blank.
- For replacement switches, please see page B30.
- All toggle switch covers are made and assembled in the U.S.A.
Switches are made offshore.

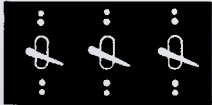
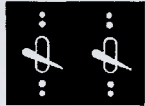
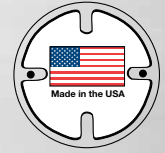
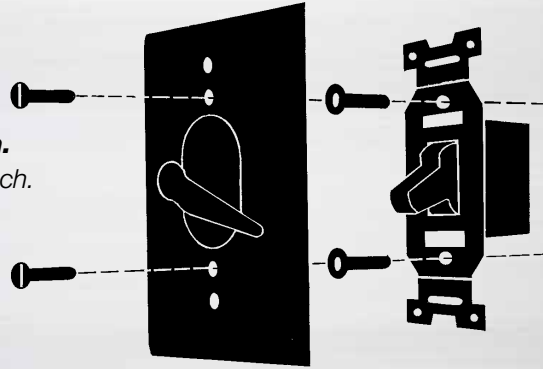


Catalog No.	No. of Gangs	Switches	Mounting	Switch & Cover or cover only	Carton Quantity	Weight per 100 units
30480	1	Single pole switch, 10A-125V, 5A-250V For Standard toggle switch (also available in white and bronze)	Standard	Switch and cover	25	40 lbs.
30488	1	Single pole switch, 10A-125V, 5A-250V For Standard toggle switch (also available in white and bronze)	Standard	Cover only	25	18 lbs.
30481	1	Single pole switch, 10A-125V, 5A-250V For Standard toggle switch	4-screw (FS)	Switch and cover	25	40 lbs.
30489	1	Single pole switch, 10A-125V, 5A-250V For Standard toggle switch	4-screw (FS)	Cover only	25	18 lbs.
30482	1	Single pole switch, 20A-120/277VAC	Standard	Switch and cover	25	32 lbs.
30483	1	Single pole switch, 20A-120/277VAC	4-screw (FS)	Switch and cover	25	32 lbs.
30490	1	Double pole switch, 15A-120VAC	Standard	Switch and cover	25	40 lbs.
30494	1	Double pole switch, 15A-120VAC	4-screw (FS)	Switch and cover	25	40 lbs.
30486	1	Double pole switch, 20A-120/277VAC	Standard	Switch and cover	25	32 lbs.
30487	1	Double pole switch, 20A-120/277VAC	4-screw (FS)	Switch and cover	25	32 lbs.
30484	1	Three-way switch, 6A-125V, 3A-250V	Standard	Switch and cover	25	32 lbs.
30485	1	Three-way switch, 6A-125V, 3A-250V	4-screw (FS)	Switch and cover	25	32 lbs.

Toggle Switch Covers

Suitable for wet locations

These covers can be used with any toggle switch.
 All parts, including spacers, are supplied with each switch.
 Strap "ears" must be cut off prior to mounting on plate.



Catalog No.	No. of Gangs	Switches	Mounting	Switch and Cover or cover only	Carton Quantity	Weight per 100 units
30492	2	2 Single pole switches, 10A-125V,5A-250V	Standard	Switches and cover	10	50 lbs.
30496	2	For 2 standard toggle switches	Standard	Cover only	10	40 lbs.
30493	2	2 Three-way switches, 6A-125V, 3A-250V	Standard	Switches and cover	10	50 lbs.
30497	3	3 Single pole switches, 10A-125V,5A-250V	Standard	Switches and cover	10	110 lbs.
30499	3	For 3 standard toggle switches	Standard	Cover only	20	90 lbs.
30498	3	3 Three-way switches, 6A-125V, 3A-250V	Standard	Switches and cover	10	110 lbs.
30474	4	4 Single pole switches, 10A-125V,5A-250V	Standard	Switches and cover	10	150 lbs.
30478	4	For 4 standard toggle switches	Standard	Cover only	10	70 lbs.
30491	5	For 5 standard toggle switches		Please contact factory		

Slip Fitters

- Cast aluminum.
- Three set screws included to provide secure fit.
- Cast 2" nipple.
- Weather- and corrosion- resistant.
- UL Listed.



Catalog No.	Color	Carton Quantity	Weight per 100 units
30346	For 1½" - 2" pipe	10	40 lbs.

Die-Cast Lampholders

Suitable for wet locations

These architecturally styled, heavy duty lampholders will enhance any installation. They combine economy with superior construction for long, trouble-free use.

- Heavy duty die-cast housing.
- Positive locking screw on swivel arm and deeply serrated teeth on swivel assure positive positioning.
- Replaceable porcelain socket.
- Prewired high temperature 6" leads make wiring simple.
- Inside heat resistant gasket.
- Wattage: 75-150 Watt-PAR 38 and R-40 lamps.
- 1/2" NPT threaded arm with locknut.
- Available in 5 finishes.
- Painted finishes are powder coated.
- UL Listed for wet locations to 90° angle.
- Rated temperature: 105°C.



Catalog No.	Color	Carton Quantity	Weight per 100 units
30010	Aluminum	36	44 lbs.
30010B	Black	36	44 lbs.
30010W	White	36	44 lbs.
30010Z	Bronze	36	44 lbs.

Lampholder with Exterior Neoprene Gasket

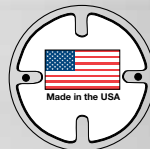
Catalog No.	Color	Carton Quantity	Weight per 100 units
30015	Aluminum	25	50 lbs.
30015B	Black	25	50 lbs.
30015W	White	25	50 lbs.
30015Z	Bronze	25	50 lbs.



Die-Cast Lampholders - Residential Grade

Suitable for wet locations

- Heavy duty die-cast housing.
- Positive locking screw on swivel arm and deeply serrated teeth on swivel assure positive positioning.
- Replaceable porcelain socket.
- Prewired high temperature 6" leads make wiring simple.
- Inside heat resistant gasket.
- Wattage: 75-150 Watt-PAR 38 and R-40 lamps.
- 1/2" NPT threaded arm with locknut.
- Available in 5 finishes.
- Painted finishes are powder coated.
- UL Listed for wet locations in the United States and Canada.
- Made in the U.S.A.



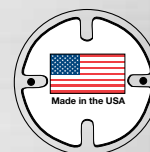
Catalog No.	Color	Carton Quantity	Weight per 100 units
30001	Aluminum	36	39 lbs.
30002	Natural	36	39 lbs.
30001B	Black	36	39 lbs.
30001W	White	36	39 lbs.
30001Z	Bronze	36	39 lbs.

Guard No. 30027 and exterior gasket No. 30698 can be used with this lampholder.

Lampholder Guard

- Fits catalog numbers 30001, 30002, and 30010.
- Made in the U.S.A.

Catalog No.	Color	Carton Quantity	Weight per 100 units
30027	Chrome	6	62 lbs.



Hooded Lampholder

- One-piece lampholder and hood of heavy-duty die-cast aluminum.
- Positive locking screw on swivel arm and deeply serrated teeth on swivel assure positive positioning.
- Wattage: 75 to 150 watt PAR-38 and R-40 amps.
- 1/2" NPT threaded arm with locknut.
- 10" lead wire.
- UL Listed.

Catalog No.	Color	Carton Quantity	Weight per 100 units
30060	Gray	6	105 lbs.
30060W	White	6	105 lbs.
30060Z	Bronze	6	105 lbs.



Deluxe Lampholders

Suitable for wet locations

- Die-cast aluminum.
- Glazed porcelain socket with nickel plated copper screw shell.
- Calibrated swivel with serrated locking teeth.
- Weather-and chip-resistant.
- Powder finish.
- Wattage: 75 to 150 watt-PAR-38 and R-40 lamps.
- 6" lead.
- Quality heat resistant silicone, rubber weatherseal.
- Heat dissipating ribs.
- UL Listed.



Catalog No.	Color	Carton Quantity	Weight per 100 units
30003	Gray	10	74 lbs.
30003B	Black	10	74 lbs.
30003W	White	10	74 lbs.
30003Z	Bronze	10	74 lbs.

Con-O-Shade™

The perfect way to enhance and protect floodlighting economically. Con-O-Shade™ converts the standard Mulberry #30010 lampholder, upgrading new and existing installations and providing a shield for lamp protection.

- Heavy die-cast aluminum.
- Powder finish.
- For use with PAR 38 bulb.
- Install on #30010 lampholder easily with just a 1/4 turn –no screws, bolts, or extra parts.



Catalog No.	Color	Carton Quantity	Weight per 100 units
30050	Gray	6	95 lbs.
30050B	Black	6	95 lbs.
30050W	White	6	95 lbs.
30050Z	Bronze	6	95 lbs.

Deluxe Wire Guard

- Wire protective guard for Deluxe Lampholder (#30003) only.
- Corrosion resistant, cadmium plated.
- Made in the U.S.A.

Catalog No.	Color	Carton Quantity	Weight per 100 units
30020	Chrome	6	60 lbs.



Floodlighting Kits

Suitable for wet locations

30141: one 30001 lampholder and one round 30367 cover with one hole.

30142: two 30001 lampholders and one round 30377 cover with three holes.

- Baked powder finish.
- Prewired for convenience and ease of assembly.
- All necessary gaskets and mounting hardware supplied.
- All units packed in polybag with display header.
- Made and assembled in the U.S.A.



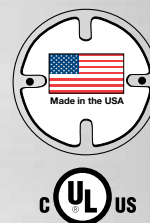
Catalog No.	Color	Carton Quantity	Weight per 100 units
30141	Gray	10	80 lbs.
30141B	Black	10	80 lbs.
30141W	White	10	80 lbs.
30141Z	Bronze	10	80 lbs.
30142	Gray	10	120 lbs.
30142B	Black	10	120 lbs.
30142W	White	10	120 lbs.
30142Z	Bronze	10	120 lbs.

For replacement parts, please see page B31.

Garden Lights

Attractive weatherproof garden lights provide low-level lighting for pathways, terraces, stairways, low plantings, and gardens. They enhance landscaping, as well as provide safety and security. Their high-quality components, die-cast construction, and UV-resistant powder finish assure years of trouble-free service.

- UL Listed for wet locations.
- Fully assembled, wired and ready to install.
- 1/2" NPT hub for 1/2" conduit mount.
- 3-wire 12" leads.
- Plastic socket.
- Heavy duty die-cast housing.
- Gasketed, vapor-tight, heat-resistant clear glass globe.
- UV-resistant baked powder polyester textured finish.
- Made in the U.S.A.



Catalog No.	No. of Tiers	Color	Dimensions	Maximum Wattage	Carton Quantity	Weight per 100 units
30113	3	Green	7" H, 6" diam.	75	6	300 lbs.
30113B	3	Black	7" H, 6" diam.	75	6	300 lbs.
30113Z	3	Bronze	7" H, 6" diam.	75	6	300 lbs.
30114	4	Green	9" H, 6" diam.	100	6	375 lbs.
30114B	4	Black	9" H, 6" diam.	100	6	375 lbs.
30114Z	4	Bronze	9" H, 6" diam.	100	6	375 lbs.



Direct Wire-in Photo Controls With Fixed or Swivel Mounting

Suitable for wet locations

- High impact polycarbonate housing.
- Turn on between 1 and 5 foot candles.
- Turn on / turn off ratio: 1 to 5.
- Single-pole, single-throw switching.
- Minimum time delay: 15 seconds.
- Contact position at night normally closed.
- External slide clip allows light level adjustment.
- With ½" -14 threaded stem. Fits ½" knockout.
- With 6" color-coded lead wire.
- Temperature range: -40°F (-40°C) to 149°F (65°C).



Durable Construction

Durable polycarbonate housing with ½" threaded stem easily mounts to a standard weatherproof box with a ½" outlet. Ideal for wall packs and other types of security and area lighting. All controls come with locknut, rubber gasket and easy-to-read instructions.

Positive Snap Action Switch

A dependable bi-metal switch provides positive on/off switching. Built-in time delay prevents accidental turn off that may result from stray automobile headlights, lightning flashes or any momentary brightness. Switch contacts are normally closed and, should they fail, remain in an ON position.

Catalog No.	Base	Voltage	Tungsten (watts)	Ballast (volt amps)	Carton Quantity	Weight per 100 units
30825	Fixed	120	2000	1900	10	15 lbs.
30830	Fixed	208-277	2000	1900	10	15 lbs.
30832	Fixed	480	2000	1900	10	15 lbs.
30847	Fixed	120	3000	2900	10	15 lbs.
30826	Swivel	120	2000	1900	10	22 lbs.

All of the above items are both UL Listed and CSA Approved, except Catalog Nos. 30847 and 30832.

NOTE: See Basic Wiring Diagram on the following page.

Direct Wire-in Photo Controls - "Button" Type

Suitable for wet locations

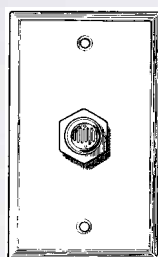
- Threaded stem, 3/4" in length, with a 3/8"-18 thread.
- Turn on between 1 and 5 foot candles.
- Turn on / turn off ratio: 1 to 5.
- Single-pole, single-throw switching.
- Built-in time delay prevents any false switching at night due to any momentary flashes of light.
- Contact position at night normally closed.
- With 6" color-coded lead wire.
- Temperature range: -40°F (-40°C) to 149°F (65°C).



Durable, Weatherproof Construction

Durable polycarbonate housing is weatherproof and corrosion resistant. The polycarbonate case and lens are sonically welded in place to seal out moisture.

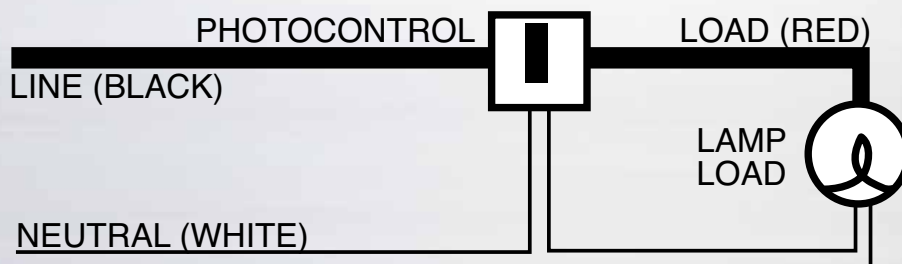
Ideal for wall packs and post lamps. All units come with locknut, rubber gasket and easy-to-read instructions.



With Anodized Aluminum Wall Plate & Gasket No. 30855

Catalog No.	Voltage	Tungsten (watts)	Ballast (volt amps)	Carton Quantity	Weight per 100 units
30850	120	1800	1100	10	20 lbs.
30853	208-277	1200	1100	10	20 lbs.
30855	120	1800	1100	10	30 lbs.

Basic Wiring Diagram



Locking-Type Photo Controls

Suitable for wet locations

- UV-stabilized polycarbonate housing is translucent, with color-coded band for voltage identification.
- Meet NEMA standards for locking-type devices.
- With solid brass plug blades to provide greater electrical dependability and maximum resistance to corrosion.
- Minimum turn on: 5 foot candles; maximum turn off: 15 foot candles.
- With ½" cadmium sulfide cell.
- Built-in time delay prevents any false switching at night due to light from vehicles, lightning, etc.
- Normally closed contact position at night.
- Temperature range: -40°F (-40°C) to 149°F (65°C).
- Dimensions: 2¾" high, 3" in diameter.
- UL Listed for use in the United States and Canada.



Catalog No.	Voltage	Tungsten (watts)	Ballast (volt amps)	Carton Quantity	Weight per 100 units
30834	120	1000	1800	10	20 lbs.
30837	208-277	1000	1800	10	20 lbs.
30842	480	1000	1800	10	20 lbs.
30844	120-277	1000	1800	10	20 lbs.

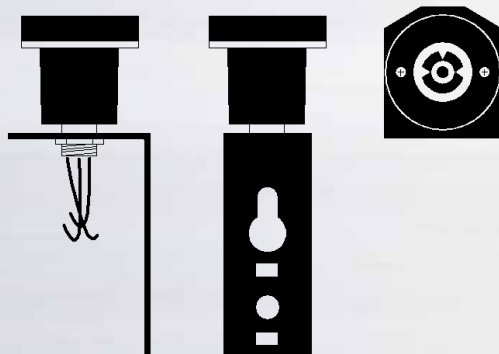


Mounting Bracket

Catalog No.	Voltage	Tungsten (watts)	Ballast (volt amps)	Carton Quantity	Weight per 100 units
30862*	(locking-type receptacle with L-shaped mounting bracket)			12	67 lbs.
30846**	(shorting cap)			10	20 lbs.

*UL Recognized Component.

** Shorting cap keeps lights on at all times unless turned off from a remote location.



Shorting Cap

Direct Wire-in Photo Controls Pencil Type -- Swivel Mount

Suitable for wet locations



- High impact polycarbonate enclosure.
- Swivel adjustable 180°.
- Single-pole single-throw switching.
- Standard turn on at 1.5 foot candle.

Durable Polycarbonate Construction

Suitable For Wet Locations

Polycarbonate housing is weatherproof and corrosion resistant. 180 degree swivel with end light sensing allows almost any outdoor installation.

Photocell

½" cadmium sulfide cell is calibrated to turn outdoor lighting on at 1.5 foot candle (dusk). The off/on ratio is 5:1. Both cell and protective window are UV-stabilized to assure greater cell life.

Positive Snap Action Switch

A dependable bi-metal switch provides positive on/off switching. Built-in time delay prevents accidental turn off that may result from stray automobile headlights, lightning flashes or any momentary brightness. Switch contacts are normally closed and, should they fail, remain in an ON position.

Temperature Range

Operating ambient temperature range between -40°F (-40°C) and 149°F (65°C).

Catalog No.	Voltage	Tungsten (watts)	Ballast (volt amps)	Carton Quantity	Weight per 100 units
30820	120	1800	1100	10	22 lbs.
30821*	208-277	1200	1100	10	22 lbs.

*Not certified. Note: CSA International (cCSAus) tests to applicable U.S. and Canadian standards including ANSI, UL and CSA.

Guarantee--All Photo Controls

All photo controls sold by Mulberry, except our locking-type models, are guaranteed against defects in parts or manufacture for five (5) years from the date of shipment. Locking-type controls (30834, 30837, 30842 and 30844) are guaranteed for three (3) years. It is understood that the voltage and/or wattage rating of the unit have not been exceeded, and that the unit has undergone no physical abuse.

Mulberry cannot assume responsibility for units damaged by voltage surges or lightning. Defective units will be credited or replaced under the Guarantee if returned to factory with shipping charges both ways paid by customer. All Direct Wire-in Photo Controls that are returned must have a minimum of 6" leads for testing. The foregoing defines Mulberry's sole liability, and in no event shall Mulberry be responsible for labor charges arising from the changing of defective photo controls or parts or, except as herein provided, for any damage, consequential or otherwise, of any nature whatsoever.

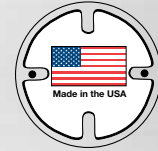


Accessories and Replacement Parts

Suitable for wet locations

Closure Plugs

Catalog No.	Description	Color	Material
30290	1/2" closure plug	Gray	Zinc
30290W	1/2" closure plug	White	Polycarbonate
30290Z	1/2" closure plug	Bronze	Polycarbonate
30291	1/2" closure plug	Gray	Polycarbonate
30292	3/4" closure plug	Gray	Zinc
30292W	3/4" closure plug	White	Polycarbonate
30292Z	3/4" closure plug	Bronze	Polycarbonate
30293	3/4" closure plug	Gray	Polycarbonate
30294	1" closure plug	Gray	Zinc
30294W	1" closure plug	White	Zinc
30294Z	1" closure plug	Bronze	Zinc

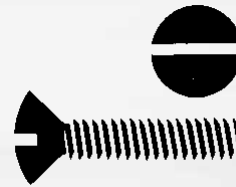


All plugs made in the U.S.A.



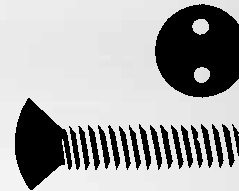
Stainless Steel Screws

Catalog No.	Description	Length
40225	Oval head, slotted 6 x 32 thread	1/2"
40235	Oval head, slotted 6 x 32 thread	1"
40245	Oval head, slotted 6 x 32 thread	1 1/2"
40255	Oval head, slotted 6 x 32 thread	2"



Tamper Proof Screws

Catalog No.	Description	Length
40261	Chrome plated brass, spanner oval head, 6 x 32 thread	1/2"
40304	Chrome plated brass, spanner oval head, 6 x 32 thread	1"
40271	Chrome plated brass, spanner oval head, 6 x 32 thread	1 1/2"
40276	Chrome plated brass, spanner oval head, 6 x 32 thread	2"



Special Screwdriver

Catalog No.	Description
40299	For spanner head tamperproof screws.



Ground Screws

Catalog No.	Description	Length
40319	Green plated 10-32 self tapping	3/4"
40320	Green plated 10-32 regular	3/4"

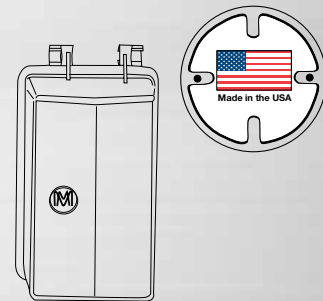


Accessories and Replacement Parts

Suitable for wet locations

Weathersafe Covers

Catalog No.	Cover	Depth	Style	Carton Quantity	Weight per 100 units
30950	Deep	3 ½"	Horizontal	10	28 lbs.
30951	Deep	3 ½"	Vertical	10	28 lbs.
30952	Shallow	2 ½"	Horizontal	10	20 lbs.
30953	Shallow	2 ½"	Vertical	10	20 lbs.



- 1-gang cover only (gasket and hardware not included).
- Made in the U.S.A.

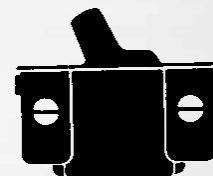
Spacers (Ferrules)

Catalog No.	Description
40495	For spacing standard switches when used with weatherproof switch covers.



Switches / Toggle

Catalog No.	Description
40501*	Single pole 10A/125 volt switch
40502	Single pole 20A/120/277 volt switch
40503	3-way 10A/125 volt switch
40504	Two pole 20A-120/277 volt switch



Motor Base Receptacle

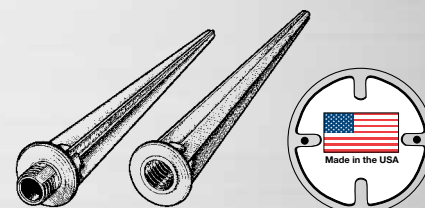
Catalog No.	Description
40507	Single Motor Base receptacle for mobile homes. With male device 3-wire U ground parallel labdes. Rated at 15A-125V. 10A/125 volt switch



Spikes

- Die-cast zinc.
- ½" male/female thread.
- Made in the U.S.A.

Catalog No.	Description	Carton Quantity	Weight per 100 units
30297	Male spike 7" long; screws into any ½" tapped hole	25	8 lbs.
30298	Female spike	25	12 lbs.



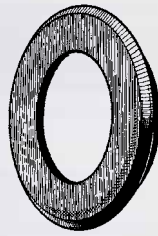
Accessories and Replacement Parts

Suitable for wet locations

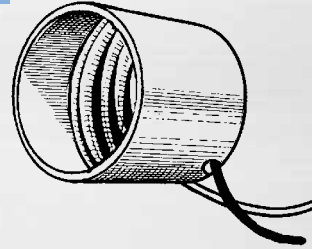
Lampholder Replacement Parts



Inside Gasket No. 30697



Outside Gasket No. 30698



Porcelain Socket No. 40505

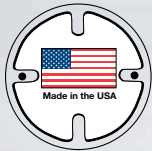
Gaskets

- 1 Gang switch
- 1 Gang blank
- 1 Gang single receptacle
- 1 Gang telephone

USE

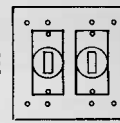


30671

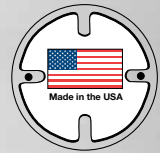


- 2 Gang blank
- 2 Gang switch
- 2 Gang duplex receptacle
- 2 Gang single receptacle
- 2 Gang, 1 switch & 1 duplex receptacle
- 2 Gang, 1 single & 1 duplex receptacle

USE

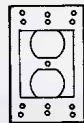


30672



- 1 Gang duplex receptacle
- 1 Gang skeleton (For GFI receptacles)
- 1 Gang louver

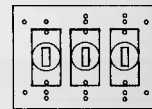
USE



30661

- 3 Gang switch
- 3 Gang blank

USE



30673

- 4" Round Catalog No. 30690 (2½" inner diameter)

Replacement Parts for Garden Lights



3 Tier Glass
No. 40513

• Made in the U.S.A.



3 Tier Glass
No. 40514

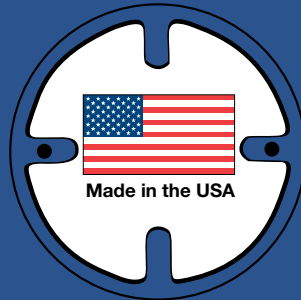
• Made in the U.S.A.

Plastic Receptacle for Garden
Light No. 40509

Index

30001	B22	30212	B4	30290Z	B29
30001B	B22	30212W	B4	30292	B29
30001W	B22	30212Z	B4	30292W	B29
30001Z	B22	30213	B5	30292Z	B29
30002	B22	30213W	B5	30293	B29
30003	B23	30213Z	B5	30294	B29
30003B	B23	30215	B4	30294W	B29
30003W	B23	30215W	B4	30294Z	B29
30003Z	B23	30215Z	B4	30295	B9
30010	B21	30216	B5	30296	B9
30010B	B21	30218	B4	30297	B30
30010C	B21	30219	B5	30298	B30
30010W	B21	30221	B4	30316	B8
30010Z	B21	30222	B5	30316B	B8
30015	B21	30224	B4	30316W	B8
30015B	B21	30226	B5	30316Z	B8
30015C	B21	30227	B4	30318	B8
30015W	B21	30228	B4	30318W	B8
30015Z	B21	30229	B9	30318Z	B8
30020	B23	30230	B9	30326	B8
30027	B22	30233	B6	30326W	B8
30050	B23	30233W	B6	30326Z	B8
30050B	B23	30233Z	B6	30328	B8
30050W	B23	30236	B6	30328W	B8
30050Z	B23	30236W	B6	30328Z	B8
30060	B22	30236Z	B6	30333	B8
30060W	B22	30239	B6	30335	B8
30060Z	B22	30239W	B6	30346	B20
30113	B24	30239Z	B6	30347	B20
30113B	B24	30242	B6	30351	B16
30113Z	B24	30245	B6	30351B	B16
30114	B24	30245W	B6	30351W	B16
30114B	B24	30245Z	B6	30351Z	B16
30114Z	B24	30248	B6	30356	B16
30141	B24	30251	B6	30356B	B16
30141B	B24	30254	B6	30356W	B16
30141W	B24	30257	B6	30356Z	B16
30141Z	B24	30260	B6	30361	B16
30142	B24	30263	B6	30361B	B16
30142B	B24	30266	B6	30361W	B16
30142W	B24	30267	B6	30361Z	B16
30142Z	B24	30267W	B6	30367	B15
30201	B5	30267Z	B6	30367B	B15
30201B	B5	30269	B6	30367W	B15
30201W	B5	30270	B6	30367Z	B15
30201Z	B5	30272	B6	30372	B15
30203	B4	30273	B9	30372B	B15
30203B	B4	30274	B9	30372W	B15
30203W	B4	30275	B9	30372Z	B15
30203Z	B4	30277	B17	30377	B15
30204	B5	30278	B17	30377B	B15
30204W	B5	30278W	B17	30377W	B15
30204Z	B5	30278Z	B17	30377Z	B15
30206	B4	30279	B17	30381	B15
30206W	B4	30282	B17	30381W	B15
30206Z	B4	30283	B17	30381Z	B15
30207	B5	30283W	B17	30385	B8
30207W	B5	30283Z	B17	30387	B8
30207Z	B5	30284	B17	30389	B8
30209	B4	30286	B17	30426	B14
30209W	B4	30287	B9	30427	B14
30209Z	B4	30288	B9	30428	B14
30210	B5	30289	B9	30429	B14
30210W	B5	30290	B29	30450	Custom Item
30210Z	B5	30290W	B29	30451	B12

30451W	B12	30513	B13	30921	B10
30451Z	B12	30522	B13	30922	B10
30452	B14	30522W	B13	30934	B11
30452W	B14	30522Z	B13	30935	B11
30452Z	B14	30523	B13	30935W	B11
30455	B15	30525	B13	30936	B11
30456	B15	30526	B13	30936W	B11
30457	B15	30528	B13	30940	B10
30458	B15	30529	B13	30950	B30
30458W	B14	30531	B13	30951	B30
30458Z	B14	30532	B13	30952	B30
30460	Custom Item	30534	B13	30953	B30
30461	B14	30535	B13	40225	B29
30461W	B14	30537	B13	40235	B29
30461Z	B14	30537W	B13	40245	B29
30464	B14	30537Z	B13	40255	B29
30465	B14	30538	B13	40261	B29
30466	B14	30550	B12	40271	B29
30467	B14	30550W	B12	40276	B29
30468	B14	30550Z	B12	40299	B29
30470	B14	30552	B12	40304	B29
30472	B14	30552W	B12	40319	B29
30473	B14	30552Z	B12	40320	B29
30474	B19	30554	B12	40495	B30
30475	B14	30554W	B12	40501	B30
30477	B14	30554Z	B12	40502	B30
30478	B19	30560	Custom Item	40503	B30
30479	B14	30583	B5	40504	B30
30480	B18	30584	B5	40505	B30
30480W	B18	30586	B5	40507	B30
30480Z	B18	30587	B5	40509	B31
30481	B18	30589	B5	40513	B31
30482	B18	30593	B7	40514	B31
30483	B18	30595	B7		
30484	B18	30596	B7		
30485	B18	30597	B7		
30486	B18	30598	B7		
30487	B18	30599	B7		
30488	B18	30601	B7		
30488W	B18	30603	B7		
30488Z	B18	30661	B31		
30489	B18	30671	B31		
30490	B18	30672	B31		
30491	B19	30673	B31		
30492	B19	30690	B31		
30493	B19	30697	B31		
30494	B18	30698	B31		
30495	B14	30820	B28		
30496	B19	30821	B28		
30497	B19	30825	B25		
30498	B19	30826	B25		
30499	B19	30830	B25		
30501	B12	30832	B25		
30501U	B12	30834	B27		
30501W	B12	30837	B27		
30501Z	B12	30842	B27		
30505	B12	30844	B27		
30505W	B12	30846	B27		
30505Z	B12	30847	B25		
30507	B12	30850	B26		
30507W	B12	30853	B26		
30507Z	B12	30855	B26		
30509	B12	30862	B27		
30509W	B12	30919	B10		
30509Z	B12	30920	B10		



Look for our 'Made-in-the-USA' symbol.

Product series that display our symbol above are made in the U.S.A. and comply with the Buy American Act.

For more information or documentation, contact us.



Mulberry Metal Products, Inc.
2199 Stanley Terrace • P.O. Box 443 • Union, New Jersey 07083
Tel. 908.688.8850 • Fax. 908.688.7294 • www.mulberrymetal.com