



Oatey[®]

Irrigation, Pool & Spa
SOLVENT CEMENTS, DRAINS & ACCESSORIES



In 1916 L.R. Oatey founded his plumbing supply company in Cleveland, Ohio. Originally he sold one product, a lead roof flashing for venting pipes. L.R. insisted that everything about that product, everything that represented the Oatey brand, was about quality in meeting our customers' needs. We have not strayed from that same commitment even though 100 years later, we have expanded operationally to become a global manufacturer of thousands of products.

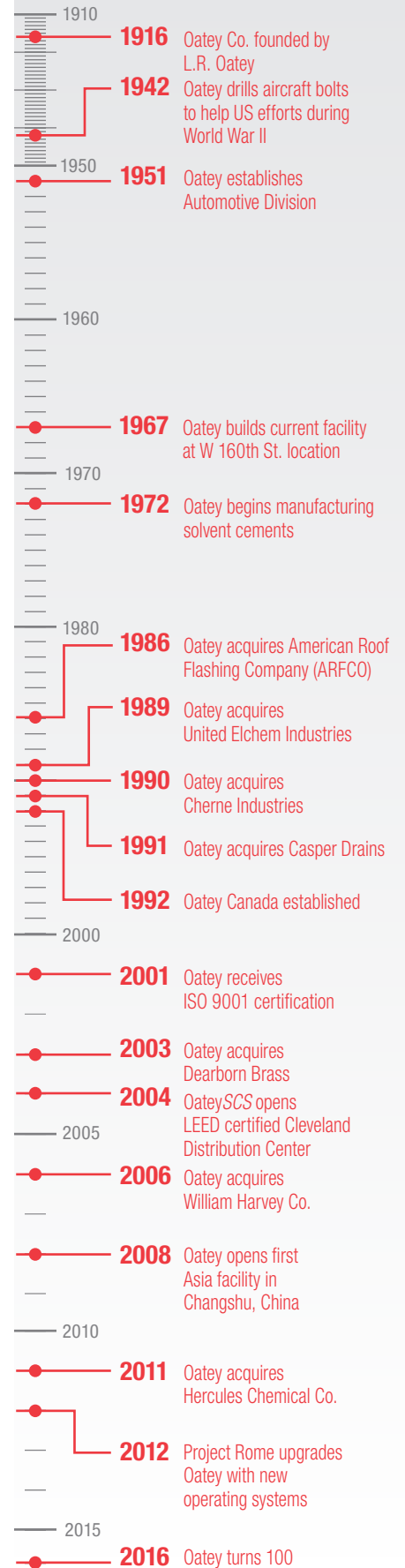
Today, Oatey offers over 6,000 residential and commercial plumbing products through its six branded lines and is a global leader in manufacturing solvent cements. After a century of incredible progress, Oatey has changed with the times, meeting the needs of its customers and manufacturing products designed to deliver quality, build trust and improve lives. Because of this evolution, Oatey is recognized today as the top choice for tradesmen and contractors.

Oatey® is the number one source for purchasing the leading brands in the plumbing and home improvement industries. You can purchase any of our brands easily and efficiently – on one invoice, in one shipment, with one phone call. Only Oatey brings you the industry's best brands in one source.

For more information on Oatey or our product offerings, please visit oatey.com or contact our customer service group at 800-321-9532.

OATEY

1 THE POWER OF ONE





	Page
Plastic Pipe Cements and Primers	4
Thread Sealants and Leak Detectors	26
Copper Installation	29
Putty, Caulks and Sealants	34
Oils, Lubricants and Hand Cleaners	35
Heating Chemicals and Anti-Freeze	37
Pipe Support	39
Drains	40
Numerical Listing	44



Formulated for the **Irrigation** industry



Formulated for the **Pool & Spa** industry





#2036S shown



2000 Series Plumb-Tite™ PVC Medium “Hot” Blue Cement



- Medium-bodied blue colored cement for use on all schedules and classes of flexible and rigid PVC pipe and fittings up to 6" with interference fit.
- Lo-V.O.C. Solvent Cement meets California South Coast Air Quality Management District (SCAQMD) 1168/316A or BAAQMD Method 40 and various environmental requirements.
- No primer needed on non-pressure DWV, where local codes permit.
- Very fast setting cement formulated for wet conditions and/or quick pressurization and fast installation.
- Recommended application temperature 40°F to 110°F / 4°C to 43°C.
- Recommended for potable water, pressure pipe and DWV.
- Meets ASTM D2564.

Product No.	Size	Description	Ctn. Qty.
2066S	4 oz.	Plumb-Tite PVC Medium “Hot” Blue	24
2056S	8 oz.	Plumb-Tite PVC Medium “Hot” Blue	24
2046S	16 oz.	Plumb-Tite PVC Medium “Hot” Blue	24
2036S	32 oz.	Plumb-Tite PVC Medium “Hot” Blue	12
2024	Gallon	Plumb-Tite PVC Medium “Hot” Blue	6



#2346S shown



2300 Series Pool-Tite™ Medium Blue “Hot” PVC Cement



- Medium-bodied blue colored cement for use on all schedules and classes of flexible and rigid PVC pipe and fittings up to 6" with interference fit.
- Lo-V.O.C. Solvent Cement meets California South Coast Air Quality Management District (SCAQMD) 1168/316A or BAAQMD Method 40 and various environmental requirements.
- No primer needed on non-pressure DWV, where local codes permit.
- Very fast setting cement formulated for wet conditions and/or quick pressurization and fast installation.
- Recommended application temperature 40°F to 110°F / 4°C to 43°C.
- Recommended for potable water, pressure pipe and DWV.
- Meets ASTM D2564.

Product No.	Size	Description	Ctn. Qty.
2366S	4 oz.	Pool-Tite PVC Medium “Hot” Blue	24
2356S	8 oz.	Pool-Tite PVC Medium “Hot” Blue	24
2346S	16 oz.	Pool-Tite PVC Medium “Hot” Blue	24
2336S	32 oz.	Pool-Tite PVC Medium “Hot” Blue	12
2324	Gallon	Pool-Tite PVC Medium “Hot” Blue	6



#2936S shown



2900 Series Pool-Clear™ Medium Clear PVC Cement



- Medium-bodied clear cement for use on all schedules and classes of flexible and rigid PVC pipe and fittings up to 6" with interference fit.
- Lo-V.O.C. Solvent Cement meets California South Coast Air Quality Management District (SCAQMD) 1168/316A or BAAQMD Method 40 and various environmental requirements.
- Specially formulated for use with flexible and rigid piping systems.
- Recommended application temperature 40°F to 110°F / 4°C to 43°C.
- Recommended for potable water, pressure pipe and DWV.
- Meets ASTM D2564.

Product No.	Size	Description	Ctn. Qty.
2946S	16 oz.	Pool-Clear PVC Medium Clear	24
2936S	32 oz.	Pool-Clear PVC Medium Clear	12



#2736S shown



PW-DWV-SEWER

2700 Series Multi-Tite™ Medium Blue “Hot” PVC Solvent Cement



- Medium-bodied blue colored cement for use on ABS, PVC and CPVC pipe and fittings up to 6" with interference fit.
- Lo-V.O.C. Solvent Cement meets California South Coast Air Quality Management District (SCAQMD) 1168/316A or BAAQMD Method 40 and various environmental requirements.
- No primer needed on non-pressure DWV, where local codes permit.
- Very fast setting cement formulated for wet conditions and/or quick pressurization and fast installation.
- Recommended application temperature 40°F to 110°F / 4°C to 43°C.
- Recommended for potable water, pressure pipe and DWV.
- Meets ASTM D2564.

Product No.	Size	Description	Ctn. Qty.
2766S	4 oz.	Multi-Tite PVC Medium “Hot” Blue	24
2756S	8 oz.	Multi-Tite PVC Medium “Hot” Blue	24
2746S	16 oz.	Multi-Tite PVC Medium “Hot” Blue	24
2736S	32 oz.	Multi-Tite PVC Medium “Hot” Blue	12



#24436S shown



PW-DWV-SEWER

Spa-Tite™ Heavy Duty “Hot” Blue PVC Cement



- Heavy-bodied blue colored cement for use on all schedules and classes of flexible and rigid PVC pipe and fittings up to 12" with interference fit.
- Lo-V.O.C. Solvent Cement meets California South Coast Air Quality Management District (SCAQMD) 1168/316A or BAAQMD Method 40 and various environmental requirements.
- Specially formulated for use with flexible and rigid piping systems.
- Very fast setting cement formulated for wet conditions and/or quick pressurization and fast installation.
- Recommended application temperature 40°F to 110°F / 4°C to 43°C.
- Recommended for potable water, pressure pipe and DWV.
- Meets ASTM D2564.

Product No.	Size	Description	Ctn. Qty.
24436S	32 oz.	Spa-Tite PVC Heavy Duty Blue	12



#24336S shown



PW-DWV-SEWER

Spa-Tite™ Heavy Duty “Hot” Clear PVC Cement



- Heavy-bodied clear cement for use on all schedules and classes of flexible and rigid PVC pipe and fittings up to 12" with interference fit.
- Lo-V.O.C. Solvent Cement meets California South Coast Air Quality Management District (SCAQMD) 1168/316A or BAAQMD Method 40 and various environmental requirements.
- Specially formulated for use with flexible and rigid piping systems.
- Very fast setting cement formulated for wet conditions schedules and classes of flexible and rigid PVC pipe and/or quick pressurization and fast installation.
- Recommended application temperature 40°F to 110°F / 4°C to 43°C.
- Recommended for ALL grades and types of PVC pipe and fittings potable water, pressure pipe and DWV.
- Meets ASTM D2564.

Product No.	Size	Description	Ctn. Qty.
24336S	32 oz.	Spa-Tite PVC Heavy Duty Clear	12



#2436S shown



2400 Series Turf-Tite™ PVC Medium “Hot” Blue Cement



- Medium-bodied blue colored cement for use on all schedules and classes of flexible and rigid PVC pipe and fittings up to 6" with interference fit.
- Lo-V.O.C. Solvent Cement meets California South Coast Air Quality Management District (SCAQMD) 1168/316A or BAAQMD Method 40 and various environmental requirements.
- No primer needed on non-pressure DWV, where local codes permit.
- Very fast setting cement formulated for wet conditions and/or quick pressurization and fast installation.
- Recommended application temperature 40°F to 110°F / 4°C to 43°C.
- Recommended for potable water, pressure pipe and DWV.
- Meets ASTM D2564.

Product No.	Size	Description	Ctn. Qty.
2466S	4 oz.	Turf-Tite PVC Medium “Hot” Blue	24
2456S	8 oz.	Turf-Tite PVC Medium “Hot” Blue	24
2446S	16 oz.	Turf-Tite PVC Medium “Hot” Blue	24
2436S	32 oz.	Turf-Tite PVC Medium “Hot” Blue	12
2424	Gallon	Turf-Tite PVC Medium “Hot” Blue	6



#3036S shown



3000 Series Well-Tite™ PVC Medium “Hot” Blue Cement



- Medium-bodied blue colored cement for use on all schedules and classes of flexible and rigid PVC pipe and fittings up to 6" with interference fit.
- Lo-V.O.C. Solvent Cement meets California South Coast Air Quality Management District (SCAQMD) 1168/316A or BAAQMD Method 40 and various environmental requirements.
- No primer needed on non-pressure DWV, where local codes permit.
- Very fast setting cement formulated for wet conditions and/or quick pressurization and fast installation.
- Recommended application temperature 40°F to 110°F / 4°C to 43°C.
- Recommended for potable water, pressure pipe and DWV.
- Meets ASTM D2564.

Product No.	Size	Description	Ctn. Qty.
3046S	16 oz.	Well-Tite PVC Medium “Hot” Blue	24
3036S	32 oz.	Well-Tite PVC Medium “Hot” Blue	12
3024	Gallon	Well-Tite PVC Medium “Hot” Blue	6





#1236S shown



1200 Series PVC Medium Clear Cement

- Medium-bodied clear cement for use on all schedules and classes of PVC pipe and fittings up to 6" diameter with interference fit.
- Lo-V.O.C. Solvent Cement meets California South Coast Air Quality Management District (SCAQMD) 1168/316A or BAAQMD Method 40 and various environmental requirements.
- Recommended for potable water, pressure pipe and DWV.
- Recommended application temperature 40°F to 110°F / 4°C to 43°C.
- Meets ASTM D2564.

Product No.	Size	Description	Ctn. Qty.
1266S	4 oz.	PVC Medium Clear	24
1256S	8 oz.	PVC Medium Clear	24
1246S	16 oz.	PVC Medium Clear	24
1236S	32 oz.	PVC Medium Clear	12
1224	Gallon	PVC Medium Clear	6



#1536S shown



1500 Series PVC Heavy Duty Clear Cement

- Heavy duty clear cement for use on all schedules and classes of PVC pipe and fittings up to 12" diameter with interference fit, up to 18" for non-pressure.
- Lo-V.O.C. Solvent Cement meets California South Coast Air Quality Management District (SCAQMD) 1168/316A or BAAQMD Method 40 and various environmental requirements.
- Recommended application temperature 40°F to 110°F / 4°C to 43°C.
- Thick formula fills gaps in large diameter pipe and loose fitting joints.
- Recommended for potable water, pressure pipe, conduit and DWV.
- Meets ASTM D2564.

Product No.	Size	Description	Ctn. Qty.
1566S	4 oz.	PVC Heavy Duty Clear	24
1556S	8 oz.	PVC Heavy Duty Clear	24
1546S	16 oz.	PVC Heavy Duty Clear	24
1536S	32 oz.	PVC Heavy Duty Clear	12
1524	Gallon	PVC Heavy Duty Clear	6



#1636S shown



1600 Series PVC Medium Gray Cement

- Medium-bodied clear cement for use on all schedules and classes of PVC pipe and fittings up to 6" diameter with interference fit.
- Lo-V.O.C. Solvent Cement meets California South Coast Air Quality Management District (SCAQMD) 1168/316A or BAAQMD Method 40 and various environmental requirements.
- Recommended application temperature 40°F to 110°F / 4°C to 43°C.
- Recommended for potable water, pressure pipe and DWV.
- Meets ASTM D2564.

Product No.	Size	Description	Ctn. Qty.
1666S	4 oz.	PVC Medium Gray	24
1656S	8 oz.	PVC Medium Gray	24
1646S	16 oz.	PVC Medium Gray	24
1636S	32 oz.	PVC Medium Gray	12
1624	Gallon	PVC Medium Gray	6





#1736S shown



1700 Series PVC Heavy Duty Gray Cement

- Heavy duty gray cement for use on all schedules and classes of PVC pipe and fittings up to 12" diameter with interference fit, up to 18" for non-pressure.
- Lo-V.O.C. Solvent Cement meets California South Coast Air Quality Management District (SCAQMD) 1168/316A or BAAQMD Method 40 and various environmental requirements.
- Recommended application temperature 40°F to 110°F / 4°C to 43°C.
- Thick formula fills gaps in large diameter pipe and pipe and fittings, loose fitting joints.
- Recommended for water, pressure pipe and DWV.
- Meets ASTM D2564.

Product No.	Size	Description	Ctn. Qty.
1746S	16 oz.	PVC Heavy Duty Gray	24
1736S	32 oz.	PVC Heavy Duty Gray	12
1724	Gallon	PVC Heavy Duty Gray – Wide Mouth Can	6



#1836S shown



1800 Series Super 30® Extra Heavy Body Gray PVC Cement

- Extra heavy bodied medium-setting gray cement for use on PVC pipe and fittings up to 30" diameter.
- Lo-V.O.C. Solvent Cement meets California South Coast Air Quality Management District (SCAQMD) 1168/316A or BAAQMD Method 40 and various environmental requirements.
- Builds up for large diameter installation to fill gaps.
- Recommended application temperature 40°F to 110°F / 4°C to 43°C.
- Formulated for quick installation.
- Recommended for potable water, pressure pipe and DWV.
- Meets ASTM D2564.

Product No.	Size	Description	Ctn. Qty.
1836S	32 oz.	Extra Heavy Duty Gray	12
1824	Gallon	Extra Heavy Duty Gray – Wide Mouth Can	6



#2236S shown



2200 Series PVC Regular Clear Cement

- Regular-bodied clear cement for use on all schedules and classes of PVC pipe and fittings up to 4" for Sch. 40 and up to 2" for Sch. 80.
- Lo-V.O.C. Solvent Cement meets California South Coast Air Quality Management District (SCAQMD) 1168/316A or BAAQMD Method 40 and various environmental requirements.
- Recommended for potable water, pressure pipe and DWV.
- Recommended application temperature 40°F to 110°F / 4°C to 43°C.
- Sets up quickly.
- Meets ASTM D2564.

Product No.	Size	Description	Ctn. Qty.
2266S	4 oz.	PVC Regular Clear	24
2256S	8 oz.	PVC Regular Clear	24
2246S	16 oz.	PVC Regular Clear	24
2236S	32 oz.	PVC Regular Clear	12
2224	Gallon	PVC Regular Clear	6



#2636S shown



2600 Series Polar-Weld™ PVC All Weather Cement

- Medium-bodied clear cement for use on all schedules and classes of PVC pipe and fittings up to 6" diameter with interference fit.
- Lo-V.O.C. Solvent Cement meets California South Coast Air Quality Management District (SCAQMD) 1168/316A or BAAQMD Method 40 and various environmental requirements.
- Recommended for potable water, pressure pipe and DWV.
- Formulated for fast initial set-up at temperatures down to -15°F to 110°F / -26°C to 43°C.
- No primer needed on non-pressure DWV, where local codes permit.
- Meets ASTM D2564.

Product No.	Size	Description	Ctn. Qty.
2666S	4 oz.	Polar-Weld PVC All Weather	24
2656S	8 oz.	Polar-Weld PVC All Weather	24
2646S	16 oz.	Polar-Weld PVC All Weather	24
2636S	32 oz.	Polar-Weld PVC All Weather	12
2624	Gallon	Polar-Weld PVC All Weather	6



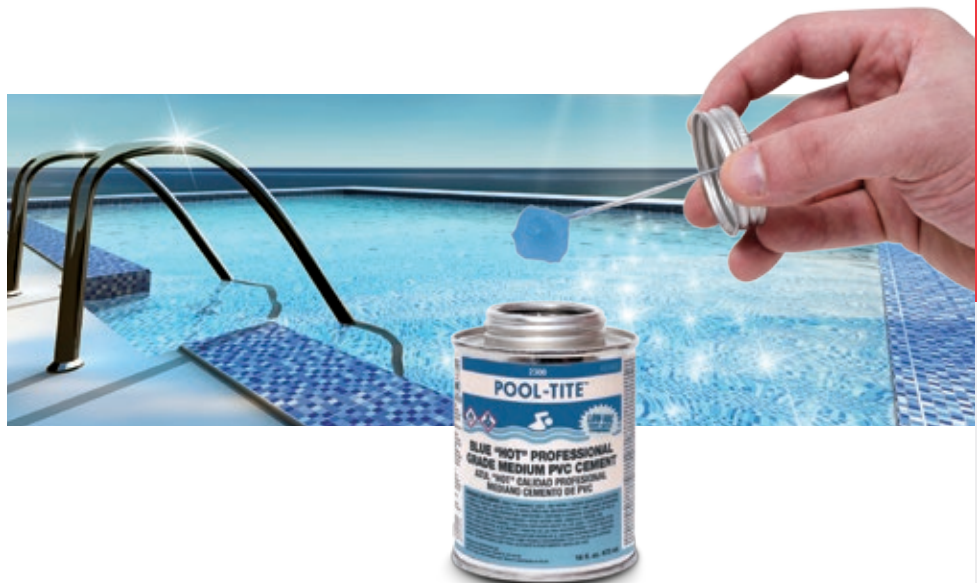
#2836S shown



2800 Series PVC Regular Clear Fast Set Cement

- Regular-bodied clear cement for use on all schedules and classes of PVC pipe and fittings up to 4" for Sch. 40 and up to 2" for Sch. 80.
- Lo-V.O.C. Solvent Cement meets California South Coast Air Quality Management District (SCAQMD) 1168/316A or BAAQMD Method 40 and various environmental requirements.
- Recommended for potable water, pressure pipe and DWV.
- Recommended application temperature 40°F to 110°F / 4°C to 43°C.
- Sets up quickly.
- Meets ASTM D2564.

Product No.	Size	Description	Ctn. Qty.
2866S	4 oz.	PVC Regular Clear Fast Set	24
2856S	8 oz.	PVC Regular Clear Fast Set	24
2846S	16 oz.	PVC Regular Clear Fast Set	24
2836S	32 oz.	PVC Regular Clear Fast Set	12
2824	Gallon	PVC Regular Clear Fast Set	6





#3236S shown



3200 Series CPVC Medium Orange Cement

- Medium-bodied orange cement for use on CPVC pipe and fittings up to 6" diameter.
- Lo-V.O.C. Solvent Cement meets California South Coast Air Quality Management District (SCAQMD) 1168/316A or BAAQMD Method 40 and various environmental requirements.
- Recommended application temperature 40°F to 110°F / 4°C to 43°C.
- Recommended for hot and cold potable water pressure pipe.
- Meets ASTM F493.

Product No.	Size	Description	Ctn. Qty.
3266S	4 oz.	CPVC Medium Orange	24
3256S	8 oz.	CPVC Medium Orange	24
3246S	16 oz.	CPVC Medium Orange	24
3236S	32 oz.	CPVC Medium Orange	12



#4436S shown



4400 Series ABS Medium Black Cement

- Medium-bodied black cement for use on all schedules and classes of ABS pipe and fittings up to 6" diameter with interference fit.
- Lo-V.O.C. Solvent Cement meets California South Coast Air Quality Management District (SCAQMD) 1168/316A or BAAQMD Method 40 and various environmental requirements.
- For all non-pressure applications.
- Recommended application temperature 40°F to 110°F / 4°C to 43°C.
- Meets ASTM D2235.

Product No.	Size	Description	Ctn. Qty.
4466S	4 oz.	ABS Medium Black	24
4456S	8 oz.	ABS Medium Black	24
4446S	16 oz.	ABS Medium Black	24
4436S	32 oz.	ABS Medium Black	12



#6236S shown

6200 Series Multi-Purpose Clear Cement

- Regular-bodied clear cement for use on all schedules and classes of PVC, CPVC and ABS pipe and fittings up to 2" diameter with interference fit.
- Recommended for potable water, pressure pipe and DWV.
- Recommended application temperature 40°F to 110°F / 4°C to 43°C.
- Meets performance requirements of ASTM D2564, D2235 and F493.

Consult Oatey Technical Service before using.

Product No.	Size	Description	Ctn. Qty.
6266S	4 oz.	Multi-Purpose Regular Clear	24
6256S	8 oz.	Multi-Purpose Regular Clear	24
6246S	16 oz.	Multi-Purpose Regular Clear	24
6236S	32 oz.	Multi-Purpose Regular Clear	12



#7336S shown

7300 Series All Purpose Clear Cleaner

- Clear cleaner for ABS, PVC and CPVC pipe and fittings.
- Lo-V.O.C. Solvent Cement meets California South Coast Air Quality Management District (SCAQMD) 1171/M24 or BAAQMD Method 40 and various environmental requirements.
- Flows freely and evaporates quickly.
- Fast acting cleaner removes surface dirt, grease and grime.
- All schedules and all diameters.

Product No.	Size	Description	Ctn. Qty.
7366S	4 oz.	Clear Cleaner	24
7356S	8 oz.	Clear Cleaner	24
7346S	16 oz.	Clear Cleaner	24
7336S	32 oz.	Clear Cleaner	12
7324	Gallon	Clear Cleaner	6



#8036S shown

8000 Series Prime-Tite™ Blue Primer

- Blue-tinted aggressive primer for use on PVC and CPVC pipe and fittings.
- Lo-V.O.C. Solvent Cement meets California South Coast Air Quality Management District (SCAQMD) 1168/316A or BAAQMD Method 40 and various environmental requirements.
- Formulated to work with all "TITE" products.
- Meets ASTM F656.

Product No.	Size	Description	Ctn. Qty.
8046S	16 oz.	Prime-Tite Blue Primer	24
8036S	32 oz.	Prime-Tite Blue Primer	12



#8736S shown

8700 Series Purple Primer

- Purple-tinted aggressive primer for use on PVC and CPVC pipe and fittings.
- Lo-V.O.C. Solvent Cement meets California South Coast Air Quality Management District (SCAQMD) 1168/316A or BAAQMD Method 40 and various environmental requirements.
- For use in areas where plumbing code calls for verification that a primer has been used.
- Removes surface dirt, grease and grime as well as softens the pipe surface to allow a fast, secure solvent weld.

Product No.	Size	Description	Ctn. Qty.
8766S	4 oz.	Purple Primer	24
8756S	8 oz.	Purple Primer	24
8746S	16 oz.	Purple Primer	24
8736S	32 oz.	Purple Primer	12
8724	Gallon	Purple Primer	6





#8836S shown

8800 Series Purple Primer/Cleaner

- Purple-tinted aggressive primer for use on PVC and CPVC pipe and fittings.
- Lo-V.O.C. Solvent Cement meets California South Coast Air Quality Management District (SCAQMD) 1171/M24 or BAAQMD Method 40 and various environmental requirements.
- Less aggressive than clear primer and purple primer.
- Removes surface dirt, grease and grime as well as softens the pipe surface to allow a fast, secure solvent weld.

Product No.	Size	Description	Ctn. Qty.
8866S	4 oz.	Purple Primer/Cleaner	24
8856S	8 oz.	Purple Primer/Cleaner	24
8846S	16 oz.	Purple Primer/Cleaner	24
8836S	32 oz.	Purple Primer/Cleaner	12
8824	Gallon	Purple Primer/Cleaner	6



#9336S shown

9300 Series Clear Primer

- A clear aggressive primer for use on PVC and CPVC.
- Lo-V.O.C. Solvent Cement meets California South Coast Air Quality Management District (SCAQMD) 1168/316A or BAAQMD Method 40 and various environmental requirements.
- Removes surface dirt, grease and grime as well as softens the pipe surface to allow a fast, secure solvent weld.
- All schedules and all diameters.
- Meets ASTM F656.

Product No.	Size	Description	Ctn. Qty.
9366S	4 oz.	Clear Primer – NSF Listed	24
9356S	8 oz.	Clear Primer – NSF Listed	24
9346S	16 oz.	Clear Primer – NSF Listed	24
9336S	32 oz.	Clear Primer – NSF Listed	12
9324	Gallon	Clear Primer – NSF Listed	6





#32163 shown



PVC Blue Lava Hot Cement

- Medium-bodied blue cement for use on all schedules and classes of PVC pipe and fittings up to 6" diameter with interference fit.
- Lo-V.O.C. Solvent Cement meets California South Coast Air Quality Management District (SCAQMD) 1168/316A or BAAQMD Method 40 and various environmental requirements.
- Very fast-setting "Hot" cement formulated for wet conditions and/or quick pressurization and fast installation.
- Recommended for potable water, sewer and DWV applications.
- Recommended application temperature 40°F to 110°F / 4°C to 43°C.
- No primer needed on non-pressure DWV, where local codes permit.
- Meets ASTM D2564.

Product No.	Size	Description	Ctn. Qty.
32160	4 oz.	PVC Blue Lava Hot Cement	24
32161	8 oz.	PVC Blue Lava Hot Cement	24
32162	16 oz.	PVC Blue Lava Hot Cement	24
32163	32 oz.	PVC Blue Lava Hot Cement	12
32164	Gallon	PVC Blue Lava Hot Cement	6



#32168 shown



CPVC Orange Lava Hot Cut-In Cement

- Lo-V.O.C. Solvent Cement meets California South Coast Air Quality Management District (SCAQMD) 1168/316A or BAAQMD Method 40 and various environmental requirements.
- Very fast setting "Hot" cement, 25-50% faster than other CPVC cements.
- No primer needed on non-pressure DWV, where local codes permit.
- Meets ASTM D2564.

Product No.	Size	Description	Ctn. Qty.
32166	8 oz.	Orange Lava CPVC Cut-In Cement	24
32167	16 oz.	Orange Lava CPVC Cut-In Cement	24
32168	32 oz.	Orange Lava CPVC Cut-In Cement	12



#30894 shown



PVC Rain-R-Shine® Blue Cement

- Medium-bodied blue cement for use on all schedules and classes of PVC pipe and fittings up to 6" diameter with interference fit.
- Lo-V.O.C. Solvent Cement meets California South Coast Air Quality Management District (SCAQMD) 1168/316A or BAAQMD Method 40 and various environmental requirements.
- Very fast-setting "Hot" cement formulated for wet conditions and/or quick pressurization and fast installation.
- Recommended for pool, irrigation, potable water, pressure pipe, conduit and DWV.
- Recommended application temperature 40°F to 110°F / 4°C to 43°C.
- No primer needed on non-pressure DWV, where local codes permit.
- Meets ASTM D2564.

Product No.	Size	Description	Ctn. Qty.
30890	4 oz.	PVC Rain-R-Shine Blue	24
30891	8 oz.	PVC Rain-R-Shine Blue	24
308913	8 oz.	PVC Rain-R-Shine Blue – Display Pack	36
30893	16 oz.	PVC Rain-R-Shine Blue	24
308933	16 oz.	PVC Rain-R-Shine Blue – Display Pack	10
30894	32 oz.	PVC Rain-R-Shine Blue	12
30895	Gallon	PVC Rain-R-Shine Blue – Wide Mouth Can	6



#31132 shown


PVC All Weather Clear Cement

- Medium-bodied clear cement for use on all schedules and classes of PVC pipe and fittings up to 6" diameter with interference fit.
- Lo-V.O.C. Solvent Cement meets California South Coast Air Quality Management District (SCAQMD) 1168/316A or BAAQMD Method 40 and various environmental requirements.
- Recommended application temperature -15°F to 110°F / -26°C to 43°C.
- Recommended for use on potable water, drain, waste, and vent systems.
- No primer needed on non-pressure DWV, where local codes permit.
- Meets ASTM D2564.

Product No.	Size	Description	Ctn. Qty.
31132	16 oz.	PVC All Weather Clear	24
31133	32 oz.	PVC All Weather Clear	12
31135	Gallon	PVC All Weather Clear – Wide Mouth Can	6



#31938 shown


PVC Hot Weather Plus™ Cement

- Medium-bodied clear cement for use on all schedules and classes of PVC pipe and fittings up to 6" diameter with interference fit.
- Ideal for installation in high temperature environments where additional working time is required.
- Lo-V.O.C. Solvent Cement meets California South Coast Air Quality Management District (SCAQMD) 1168/316A or BAAQMD Method 40 and various environmental requirements.
- Recommended application temperature 40°F to 110°F / 4°C to 43°C.
- Recommended for use on potable water, drain, waste, and vent systems.
- No primer needed on non-pressure DWV, where local codes permit.
- Meets ASTM D2564.

Product No.	Size	Description	Ctn. Qty.
31936	8 oz.	PVC Hot Weather Plus Medium Clear	24
31937	16 oz.	PVC Hot Weather Plus Medium Clear	24
31938	32 oz.	PVC Hot Weather Plus Medium Clear	12



#30879 shown


PVC Flexible Clear Cement

- Medium-bodied clear cement for use on flexible PVC pipe and rigid fittings up to 6" diameter with interference fit.
- Lo-V.O.C. Solvent Cement meets California South Coast Air Quality Management District (SCAQMD) 1168/316A or BAAQMD Method 40 and various environmental requirements.
- Formulated to withstand pressures and vibrations commonly associated with spa and swimming pool installations.
- Meets manufacturer's rated line pressure for flexible PVC pipe.
- Recommended application temperature 40°F to 110°F / 4°C to 43°C.
- Meets ASTM D2564.

Product No.	Size	Description	Ctn. Qty.
30875	4 oz.	PVC Flexible Clear	12
30879	32 oz.	PVC Flexible Clear	12



#30900 shown



PW-DWV-SEWER

ABS To PVC Transition Green Cement

- Medium-bodied green cement for use in joining ABS to PVC in non-pressure transition joints up to 6" diameter.
- Lo-V.O.C. Solvent Cement meets California South Coast Air Quality Management District (SCAQMD) 1168/316A or BAAQMD Method 40 and various environmental requirements.
- Recommended application temperature 40°F to 110°F / 4°C to 43°C.
- Meets ASTM D3138.

Product No.	Size	Description	Ctn. Qty.
309003	4 oz.	ABS To PVC Transition Green – Display Pack	12
30900	4 oz.	ABS To PVC Transition Green	24
30925	16 oz.	ABS To PVC Transition Green	6
30926	32 oz.	ABS To PVC Transition Green	12



#30847 shown

All Purpose Cement

- Medium-bodied milky-clear cement for use on all schedules and classes of ABS, PVC and CPVC* pipe and fittings up to 6" diameter with interference fit.
- Lo-V.O.C. Solvent Cement meets California South Coast Air Quality Management District (SCAQMD) 1168/316A or BAAQMD Method 40 and various environmental requirements.
- Recommended for potable water, conduit and DWV.
- Recommended application temperature 40°F to 110°F / 4°C to 43°C.
- Meets performance requirements of ASTM D2564, D2235, F493.
- Always check local codes for acceptability of this product.

*Consult Oatey Technical Service before using.

Product No.	Size	Description	Ctn. Qty.
30818	4 oz.	All Purpose	24
30821	8 oz.	All Purpose	24
308213	8 oz.	All Purpose – Display Pack	36
30834	16 oz.	All Purpose	24
30847	32 oz.	All Purpose	12
30848	Gallon	All Purpose	6



#30902 shown



PW-DWV-SEWER

ABS Medium Black Cement

- Medium-bodied black cement for use on all schedules and classes of ABS pipe and fittings up to 6" diameter with interference fit.
- Lo-V.O.C. Solvent Cement meets California South Coast Air Quality Management District (SCAQMD) 1168/316A or BAAQMD Method 40 and various environmental requirements.
- For all non-pressure applications.
- Recommended application temperature 40°F to 110°F / 4°C to 43°C.
- Meets ASTM D2235.

Product No.	Size	Description	Ctn. Qty.
30999	4 oz.	ABS Medium Black	24
309993	4 oz.	ABS Medium Black – Display Pack	48
30889	8 oz.	ABS Medium Black	24
308893	8 oz.	ABS Medium Black – Display Pack	36
30892	16 oz.	ABS Medium Black	24
308923	16 oz.	ABS Medium Black – Display Pack	10
30902	32 oz.	ABS Medium Black	12
309023	32 oz.	ABS Medium Black – Display Pack	6
30915	Gallon	ABS Medium Black	6



#31008 shown


PVC Heavy Duty Clear Cement

- Heavy-bodied clear cement for use on all schedules and classes PVC pipe and fitting up to 12" diameter with interference fit, up to 18" for non-pressure.
- Lo-V.O.C. Solvent Cement meets California South Coast Air Quality Management District (SCAQMD) 1168/316A or BAAQMD Method 40 and various environmental requirements.
- Thick formula fills gaps in large diameter pipe and loose fitting joints.
- Recommended for potable water, pressure pipe, conduit and DWV.
- Recommended application temperature 40°F to 110°F / 4°C to 43°C.
- Meets ASTM D2564.

Product No.	Size	Description	Ctn. Qty.
30850	4 oz.	PVC Heavy Duty Clear	24
30863	8 oz.	PVC Heavy Duty Clear	24
308633	8 oz	PVC Heavy Duty Clear - Display Pack	36
30876	16 oz.	PVC Heavy Duty Clear	24
308763	16 oz	PVC Heavy Duty Clear - Display Pack	10
31008	32 oz.	PVC Heavy Duty Clear	12
310083	32 oz.	PVC Heavy Duty Clear - Display Pack	6
31011	Gallon	PVC Heavy Duty Clear - Wide Mouth Can	6



#31105 shown


PVC Heavy Duty Gray Cement

- Heavy-bodied gray cement for use on all schedules and classes PVC pipe and fitting up to 12" diameter with interference fit, up to 18" for non-pressure.
- Lo-V.O.C. Solvent Cement meets California South Coast Air Quality Management District (SCAQMD) 1168/316A or BAAQMD Method 40 and various environmental requirements.
- Thick formula fills gaps in large diameter pipe and loose fitting joints.
- Recommended for potable water, pressure pipe, conduit and DWV.
- Recommended application temperature 40°F to 110°F / 4°C to 43°C.
- Meets ASTM D2564.

Product No.	Size	Description	Ctn. Qty.
31093	4 oz.	PVC Heavy Duty Gray	24
31094	8 oz.	PVC Heavy Duty Gray	24
31095	16 oz.	PVC Heavy Duty Gray	24
31105	32 oz.	PVC Heavy Duty Gray	12
31118	Gallon	PVC Heavy Duty Gray - Wide Mouth Can	6



#31122 shown


PVC Heavy Duty Gray Fast Set Cement

- Very Heavy-bodied fast setting gray cement for use on all schedules and classes PVC pipe and fittings up to 18" diameter with interference fit.
- Lo-V.O.C. Solvent Cement meets California South Coast Air Quality Management District (SCAQMD) 1168/316A or BAAQMD Method 40 and various environmental requirements.
- Formulated for quick installation of irrigation pipe and fittings.
- Builds up for large diameter installations.
- Fills gaps in large diameter pipe and loose fitting joints.
- Recommended for potable water, pressure pipe, conduit and DWV.
- Recommended application temperature 40°F to 110°F / 4°C to 43°C.
- Meets ASTM D2564.

Product No.	Size	Description	Ctn. Qty.
31121	16 oz.	PVC Heavy Duty Gray Fast Set	24
311213	16 oz.	PVC Heavy Duty Gray Fast Set - Display Pack	10
31122	32 oz.	PVC Heavy Duty Gray Fast Set	12
31123	Gallon	PVC Heavy Duty Gray Fast Set - Wide Mouth Can	6



#32263 shown



PW-DWV-SEWER

PVC Heavy Duty Medium Set Gray Cement

- Very Heavy-bodied medium setting gray cement for use on all schedules and classes PVC pipe and fittings up to 18" diameter with interference fit.
- Lo-V.O.C. Solvent Cement meets California South Coast Air Quality Management District (SCAQMD) 1168/316A or BAAQMD Method 40 and various environmental requirements.
- Formulated for quick installation of irrigation pipe and fittings.
- Builds up for large diameter installations.
- Fills gaps in large diameter pipe and loose fitting joints.
- Recommended for potable water, pressure pipe, conduit and DWV.
- Recommended application temperature 40°F to 110°F / 4°C to 43°C.
- Meets ASTM D2564.

Product No.	Size	Description	Ctn. Qty.
32262	16 oz.	Heavy Duty Medium Set Gray	24
32263	32 oz.	Heavy Duty Medium Set Gray	12
32264	Gallon	Heavy Duty Medium Set Gray	6



#30343 shown



PW-DWV-SEWER

PVC EP13 Extra Heavy Duty Gray Cement

- EP13 extra heavy-bodied, slow-setting, gray solvent cement for use on all classes and schedules of PVC pipe up to 30".
- Recommended for potable water, pressure pipe, drain, waste and vent systems.
- Builds up for large diameter installation to fill gaps.
- Ideal for fabrication.
- Recommended application temperature 40°F to 110°F / 4°C to 43°C.
- Complies with various environmental requirements and SCAQMD Rule 1168/316A or BAAQMD Method 40 for VOC.
- Formulated for warm weather application.
- Three year shelf life.
- Meets and exceeds ASTM D2564.

Product No.	Size	Description	Ctn. Qty.
30343	32 oz.	EP13 Extra Heavy Duty Gray PVC Cement	12
30344	Gallon	EP13 Extra Heavy Duty Gray PVC Cement	4



#31020 shown



PW-DWV-SEWER

PVC Medium Clear Cement

- Medium-bodied clear cement for use on all schedules and classes of PVC pipe and fittings up to 6" diameter with interference fit.
- Lo-V.O.C. Solvent Cement meets California South Coast Air Quality Management District (SCAQMD) 1168/316A or BAAQMD Method 40 and various environmental requirements.
- Recommended for potable water, pressure pipe, conduit and DWV.
- Recommended application temperature 40°F to 110°F / 4°C to 43°C.
- Meets ASTM D2564.

Product No.	Size	Description	Ctn. Qty.
31017	4 oz.	PVC Medium Clear	24
310173	4 oz.	PVC Medium Clear - Display Pack	72
31018	8 oz.	PVC Medium Clear	24
31019	16 oz.	PVC Medium Clear	24
31020	32 oz.	PVC Medium Clear	12
31021	Gallon	PVC Medium Clear	6



#30884 shown


PVC Medium Gray Cement

- Medium-bodied gray cement for use on all schedules and classes of PVC pipe and fittings up to 6" diameter with interference fit.
- Lo-V.O.C. Solvent Cement meets California South Coast Air Quality Management District (SCAQMD) 1168/316A or BAAQMD Method 40 and various environmental requirements.
- Recommended for potable water, pressure pipe, conduit and DWV.
- Recommended application temperature 40°F to 110°F / 4°C to 43°C.
- Meets ASTM D2564.

Product No.	Size	Description	Ctn. Qty.
30883	4 oz.	PVC Medium Gray	24
30884	8 oz.	PVC Medium Gray	24
30885	16 oz.	PVC Medium Gray	24
30886	32 oz.	PVC Medium Gray	12
30887	Gallon	PVC Medium Gray	6



#31015 shown


PVC Regular Clear Cement

- Regular-bodied clear cement for use on all schedules and classes of PVC pipe and fittings up to 4" for Sch. 40 and up to 2" for Sch. 80.
- Lo-V.O.C. Solvent Cement meets California South Coast Air Quality Management District (SCAQMD) 1168/316A or BAAQMD Method 40 and various environmental requirements.
- Recommended for potable water, pressure pipe, conduit and DWV.
- Recommended application temperature 40°F to 110°F / 4°C to 43°C.
- Meets ASTM D2564.

Product No.	Size	Description	Ctn. Qty.
31012	4 oz.	PVC Regular Clear	24
31013	8 oz.	PVC Regular Clear	24
310133	8 oz.	PVC Regular Clear – Display Pack	36
31014	16 oz.	PVC Regular Clear	24
310143	16 oz.	PVC Regular Clear – Display Pack	10
31015	32 oz.	PVC Regular Clear	12
310153	32 oz.	PVC Regular Clear – Display Pack	6
31016	Gallon	PVC Regular Clear	6



#31928 shown


PVC Regular Clear Advanced Cement

- Regular-bodied clear cement for use on PVC pipe and fittings up to 4" for DWV Sch. 40 and up to 2" for Sch. 80.
- Lo-V.O.C. Solvent Cement meets California South Coast Air Quality Management District (SCAQMD) 1168/316A or BAAQMD Method 40 and various environmental requirements.
- Sets up quickly.
- Recommended for potable water, pressure pipe, conduit and DWV.
- Recommended application temperature 40°F to 110°F / 4°C to 43°C.
- Meets ASTM D2564.

Product No.	Size	Description	Ctn. Qty.
31925	4 oz.	PVC Regular Clear Advanced	24
31926	8 oz.	PVC Regular Clear Advanced	24
31927	16 oz.	PVC Regular Clear Advanced	24
31928	32 oz.	PVC Regular Clear Advanced	12
31929	Gallon	PVC Regular Clear Advanced - Wide Mouth Can	6



#31913 shown



All-Weather CPVC FlowGuard Gold® 1-Step Yellow Cement

- For copper tube size (CTS) CPVC hot and cold potable water pipe and fittings up to 2" diameter interference fit.
- Lo-V.O.C. Solvent Cement meets California South Coast Air Quality Management District (SCAQMD) 1168/316A or BAAQMD Method 40 and various environmental requirements.
- For cold water systems and hot water systems up to 200°F / 93°C.
- May be used without primer where local codes permit.
- Recommended application temperature 0°F to 110°F / -18°C to 43°C.
- Meets ASTM F493.

*FlowGuard Gold is a registered trademark of The Lubrizol Corporation.

Product No.	Size	Description	Ctn. Qty.
31910	4 oz.	CPVC Flowguard Gold 1-Step Yellow	24
3191033	4 oz.	CPVC Flowguard Gold 1-Step Yellow – Display Pack	24
31911	8 oz.	CPVC Flowguard Gold 1-Step Yellow	24
319113	8 oz.	CPVC Flowguard Gold 1-Step Yellow – Display Pack	40
31912	16 oz.	CPVC Flowguard Gold 1-Step Yellow	24
31913	32 oz.	CPVC Flowguard Gold 1-Step Yellow	12
31914	Gallon	CPVC Flowguard Gold 1-Step Yellow	6



#31919 shown



All-Weather 1-Step FlowGuard Gold® With Ultraviolet Indicator

- For copper tube size (CTS) CPVC hot and cold potable water pipe and fittings up to 2" diameter interference fit.
- Lo-V.O.C. Solvent Cement meets California South Coast Air Quality Management District (SCAQMD) 1168/316A or BAAQMD Method 40 and various environmental requirements.
- For cold water systems and hot water systems up to 200°F / 93°C.
- CPVC FlowGuard Gold® with UltraViolet Indicator is specially formulated to allow for quick and easy inspection of dry fit joints using any ultraviolet light source.
- When solvent cement is applied properly, the yellow formula will glow BLUE under ultraviolet light.
- May be used without primer where local codes permit.
- Recommended application temperature 0°F to 110°F / -18°C to 43°C.
- Meets ASTM F493.

*FlowGuard Gold is a registered trademark of The Lubrizol Corporation.

Product No.	Size	Description	Ctn. Qty.
31917	8 oz.	1-Step CPVC Flowguard Gold with UV Indicator	24
31918	16 oz	1-Step CPVC Flowguard Gold with UV Indicator	24
31919	32 oz.	1-Step CPVC Flowguard Gold with UV Indicator	24





#31083 shown


CPVC Heavy Duty Orange Solvent Cement

- Heavy-bodied orange cement for use on all schedules and classes of CPVC pipe and fittings up to 12" diameter with interference fit.
- Lo-V.O.C. Solvent Cement meets California South Coast Air Quality Management District (SCAQMD) 1168/316A or BAAQMD Method 40 and various environmental requirements.
- For Commercial hot and cold water systems up to 200°F / 93°C.
- Recommended application temperature 40°F to 110°F / 4°C to 43°C.
- Approved for Corzan® CPVC Piping Systems.
- Meets ASTM F493 and ASTM D2846.

*Corzan is a registered trademark of The Lubrizol Corporation.

Product No.	Size	Description	Ctn. Qty.
31082	16 oz.	CPVC Heavy Duty Orange	24
31083	32 oz.	CPVC Heavy Duty Orange	12
31084	Gallon	CPVC Heavy Duty Orange – Wide Mouth Can	6



#31129 shown


CPVC Medium Orange Cement

- Medium-bodied orange cement for use on all schedules and classes of CPVC pipe and fittings up to 6" diameter with interference fit.
- Lo-V.O.C. Solvent Cement meets California South Coast Air Quality Management District (SCAQMD) 1168/316A or BAAQMD Method 40 and various environmental requirements.
- For Residential and Commercial hot and cold water systems up to 200°F / 93°C.
- Recommended application temperature 40°F to 110°F / 4°C to 43°C.
- Approved for Corzan® CPVC Piping Systems.
- Meets ASTM F493 and ASTM D2846.

*Corzan is a registered trademark of The Lubrizol Corporation.

Product No.	Size	Description	Ctn. Qty.
31128	4 oz.	CPVC Medium Orange	24
31129	8 oz.	CPVC Medium Orange	24
311293	8 oz.	CPVC Medium Orange – Display Pack	36
31130	16 oz.	CPVC Medium Orange	24
31131	32 oz.	CPVC Medium Orange	12
31127	Gallon	CPVC Medium Orange	6



#30246 shown


Handy Packs

- Convenient "Handy Pack" for storage – just add pipe and fittings.
- Contains one can of PVC Cement and one can of NSF Purple Primer.

Product No.	Size	Description	Ctn. Qty.
30246	4 oz.	PVC Regular & NSF Purple Primer	12
302483	8 oz.	PVC Regular & NSF Purple Primer – Display Pack	20
30246D	4 oz.	PVC Medium & NSF Purple Primer – Display Pack	24



#30758 shown



Purple Primer

- Purple-tinted aggressive primer for use on PVC and CPVC pipe and fittings.
- Lo-V.O.C. Solvent Cement meets California South Coast Air Quality Management District (SCAQMD) 1168/316A or BAAQMD Method 40 and various environmental requirements.
- Removes surface dirt, grease and grime as well as softens the pipe surface to allow a fast, secure solvent weld.
- For use in areas where plumbing code calls for verification that a primer has been used.
- NSF and IAPMO Listed.
- Meets ASTM F656.

Product No.	Size	Description	Ctn. Qty.
30755	4 oz.	Purple Primer	24
30756	8 oz.	Purple Primer	24
30757	16 oz.	Purple Primer	24
307573	16 oz.	Purple Primer – Display Pack	10
30758	32 oz.	Purple Primer	12
307583	32 oz.	Purple Primer – Display Pack	6
30759	Gallon	Purple Primer – Wide Mouth Can	6



#30753 shown



Clear Primer

- Clear aggressive primer for use on PVC and CPVC pipe and fittings.
- Lo-V.O.C. Solvent Cement meets California South Coast Air Quality Management District (SCAQMD) 1168/316A or BAAQMD Method 40 and various environmental requirements.
- Removes surface dirt, grease and grime as well as softens the pipe surface to allow a fast, secure solvent weld.
- NSF Listed.
- Meets ASTM F656.

Product No.	Size	Description	Ctn. Qty.
30750	4 oz.	Clear Primer	24
30751	8 oz.	Clear Primer	24
30752	16 oz.	Clear Primer	24
30753	32 oz.	Clear Primer	12
30754	Gallon	Clear Primer	6



#30774 shown



Industrial Grade Clear Primer

- Very Aggressive Clear primer for use on PVC and CPVC pipe and fittings.
- Lo-V.O.C. Solvent Cement meets California South Coast Air Quality Management District (SCAQMD) 1168/316A or BAAQMD Method 40 and various environmental requirements.
- Recommended for Commercial and Large diameter thermoplastic piping systems, specifically CPVC Sch. 40 / 80.
- Ideal for use in cold weather applications.
- Removes surface dirt, grease and grime as well as softens the pipe surface to allow a fast, secure solvent weld.
- NSF Listed.
- Meets ASTM F656.

Product No.	Size	Description	Ctn. Qty.
30773	16 oz.	Clear Primer – Industrial Grade	24
30774	32 oz.	Clear Primer – Industrial Grade	12
30775	Gallon	Clear Primer – Industrial Grade	6





#30770 shown


Industrial Grade Purple Primer

- Very Aggressive purple-tinted primer for use on PVC and CPVC pipe and fittings.
- Lo-V.O.C. Solvent Cement meets California South Coast Air Quality Management District (SCAQMD) 1168/316A or BAAQMD Method 40 and various environmental requirements.
- Recommended for Commercial and Large diameter thermoplastic piping systems, specifically CPVC Sch. 40 / 80.
- Ideal for use in cold weather applications.
- Removes surface dirt, grease and grime as well as softens the pipe surface to allow a fast, secure solvent weld.
- For use in areas where plumbing code calls for verification that a primer has been used.
- NSF and IAPMO Listed.
- Meets ASTM F656.

Product No.	Size	Description	Ctn. Qty.
30770	16 oz.	Purple Primer – Industrial Grade	24
30771	32 oz.	Purple Primer – Industrial Grade	12
30772	Gallon	Purple Primer – Industrial Grade	6



#30806 shown

Purple Primer/Cleaner

- Purple-tinted aggressive primer for use on PVC and CPVC pipe and fittings.
- Lo-V.O.C. Solvent Cement meets California South Coast Air Quality Management District (SCAQMD) 1171/M24 or BAAQMD Method 40 and various environmental requirements.
- Less aggressive than clear and purple primers.
- Removes surface dirt, grease and grime for preparation before solvent cementing.
- Always check local codes for acceptability of this product.

Product No.	Size	Description	Ctn. Qty.
30780	4 oz.	Purple Primer/Cleaner	24
30783	8 oz.	Purple Primer/Cleaner	24
30796	16 oz.	Purple Primer/Cleaner	24
30806	32 oz.	Purple Primer/Cleaner	12
30768	Gallon	Purple Primer/Cleaner	6



#30805 shown

Clear Cleaner

- Clear Cleaner for ABS, PVC and CPVC pipe and fittings.
- Lo-V.O.C. Solvent Cement meets California South Coast Air Quality Management District (SCAQMD) 1171/M24 or BAAQMD Method 40 and various environmental requirements.
- All schedules and all diameters.
- Flows freely and evaporates quickly.
- Fast acting cleaner removes surface dirt, grease and grime.

Product No.	Size	Description	Ctn. Qty.
30779	4 oz.	Cleaner	24
30782	8 oz.	Cleaner	24
307823	8 oz.	Cleaner – Display Pack	36
30795	16 oz.	Cleaner	24
307953	16 oz.	Cleaner – Display Pack	10
30805	32 oz.	Cleaner	12
30766	Gallon	Cleaner – Wide Mouth Can	6



Solvent Cement and Primer Accessories

- Standard replacement daubers specifically sized for 4 oz., 8 oz., 16 oz. and 32 oz. cement/primer cans.
- Brush applicator for 16 & 32 oz. cans.
- Standard replacement cans.

Product No.	Size	Description	Ctn. Qty.
31322	4 oz.	Dauber Cap with Polyethylene Liner for PVC/CPVC Cement (Tin Plated Stem) 3/8" Dauber	48
31299	4 oz.	Dauber Cap with Polyethylene Liner for PVC/CPVC Cement (Tin Plated Stem) 3/4" Dauber	48
31325	8 oz.	Dauber Cap with Polyethylene Liner for PVC/CPVC Cement (Tin Plated Stem) 3/8" Dauber	48
31309	8 oz.	Dauber Cap with Polyethylene Liner for PVC/CPVC Cement (Tin Plated Stem) 3/4" Dauber	48
31310	16 oz.	Dauber Cap with Polyethylene Liner for PVC/CPVC Cement (Tin Plated Stem) 1-1/2" Dauber	48
31312	32 oz.	Dauber Cap with Polyethylene Liner for PVC/CPVC Cement (Tin Plated Stem) 1-1/2" Dauber	48
31313	16/32 oz.	Dauber For CPVC Cement 3/4"	48
31257	16/32 oz.	Brush Top Dauber 1-1/2" Length	50
31275	12"	Gallon Can Roller Applicator – Fits Wide and Standard Mouth Size	12
31276	12"	Gallon Can Swab Applicator – Fits Wide and Standard Mouth Size	12
31304	4 oz.	Cement Can	24
31305	8 oz.	Cement Can	24
31306	16 oz.	Cement Can	24
31307	32 oz.	Cement Can	12
30901	1 Gallon	Wide Mouth Can	6



#31300 shown

Adjustable Daubers

- For applying solvent cement and primers.
- Dauber is unbreakable.
- Designed to adjust to various can dimensions and evaporation of solvents and prevents spillage to ensure a good solvent weld.
- Specially constructed easy open, easy close sealing controls allows application of the proper amount of cement.
- Fits can sizes 1/2 pint through quart.
- 1/2" and 1" size daubers.

Product No.	Size	Description	Ctn. Qty.
31300	1/2"	Adjustable Plastic Dauber w/ 1/2" Ball	100
31301	1"	Adjustable Plastic Dauber w/ 1" Ball	100
31302	1"	Adjustable Plastic Dauber w/ 1" Ball	50

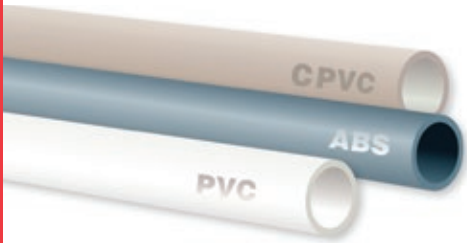


Cement Carrier

- Designed to make it easier to keep cement and cleaner ready for use on the job.
- Caddy holds two 32 oz. cans.
- Patented Design.

Product No.	Size	Description	Ctn. Qty.
31250	32 oz. can	Cement Carrier	12





PIPE TYPES

CPVC: Chlorinated Polyvinyl Chloride – Typically used for pressure piping applications, including hot and cold potable water distribution. Can also be used for corrosive fluid handling in industrial or chemical applications.

ABS: Acrylonitrile Butadiene Styrene – Typically used for non-pressure piping applications.

PVC: Polyvinyl Chloride – Typically used for pressure or non-pressure piping applications.

How To Solvent Weld

Prior to Use: Read all product labels carefully.

Stir or shake cement before using. If jelly-like, do not use. Keep container closed when not in use. Avoid eye and skin contact. Wear safety glasses with side shields and wear rubber gloves.

1. Square pipe ends, chamfer and remove all dirt.
2. Check dry fit of pipe and fitting. Pipe should easily go 1/3 of the way into the fitting. If pipe bottoms, it should be snug.
3. Use a suitable applicator at least half the size of the pipe diameter. For larger size pipe systems, use a natural bristle brush or roller.
4. Clean pipe and fitting with a listed primer. (Do not use primer on ABS pipe and fittings. Use Clear Cleaner only!)
5. Apply liberal coat of cement to pipe to the depth of the socket, leave no uncoated surface.
6. Apply a thin coat of cement to inside of fitting, avoid puddling of cement. Puddling can cause weakening and premature failure of pipe or fitting. Apply a second coat of cement to the pipe.
7. Assemble parts QUICKLY. Cement must be fluid. If cement surface has dried, recoat both parts.
8. Push pipe FULLY into fitting using a quarter turning motion until pipe bottoms.
9. Hold pipe and fitting together for 30 seconds to prevent pipe push-out; longer at low temperatures. Wipe off excess.
10. Allow 15 minutes for good handling strength and 2 hours cure time at temperatures above 60°F before pressure testing up to 180 psi. Longer cure times may be required at temperatures below 60°F or with pipe above 3". DO NOT TEST WITH AIR.

For specialty cements and chemical applications, please see specific product label instructions.

Solvent Cements for any Application

If you need to solvent weld one pipe joint or one thousand, Oatey® is the solvent cement more professionals choose than any other brand. From hot to cold, wet to dry, Oatey has the solvent cement to meet your exact requirement for any plastic pipe installation.

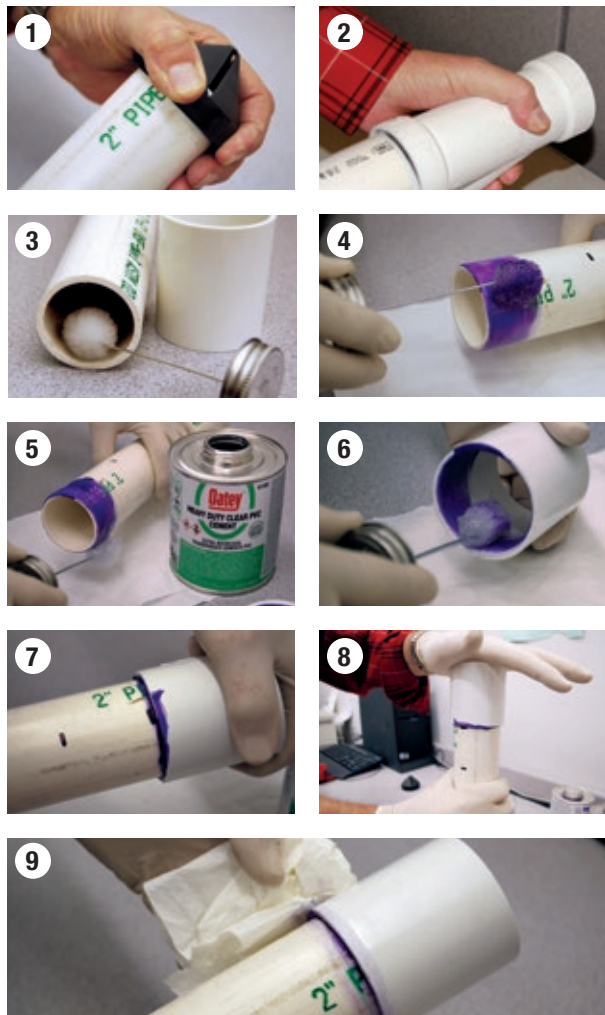
Solvent Cement Cure Times

The cure time of solvent cements is dependent on several factors. The pipe size, socket fit, ambient temperature, relative humidity, solvent cements and the system operating pressure should all be considered when determining cure times.

Oatey Solvent Cements are developed with the plumbing contractor in mind. New products like **Orange Lava Hot CPVC Cement** have the lowest set up and cure times in the industry, a perfect fit for any job requiring minimal downtime.

Oatey continues to work hard to provide you peace of mind and confidence when using Oatey brand solvent cements and products.

For cure chart see next page.





The set-up/cure time is dependent on several factors. The pipe size, socket fit, ambient temperature, relative humidity, solvent cement used and the system operating pressure should all be considered when determining set-up/cure times.

Average Handling/Set-Up Times for PVC/CPVC Solvent Cements

Handling/Set-Up Time is the time required prior to handling the joint. In damp or humid weather, allow 50% additional time.

These figures should only be used as a general guide. Conditions in the field may vary.

Contact Oatey Technical Services for set-up times for pipe larger than 8" diameter.

PVC & ABS				
Pipe Diameter	Temperature during assembly and cure period			
	60°-100°F 16°-38°C	40°-60°F 4°-16°C	20°-40°F -7°-4°C	0°-20°F -18°- -7°C
1/2" to 1-1/4" 13 to 32mm	2 min	5 min	8 min	10 min
1-1/2" to 3" 40 to 80mm	5 min	10 min	12 min	15 min
4" to 5" 100 to 125mm	15 min	30 min	60 min	2 hrs
6" to 8" 150 to 200mm	30 min	90 min	3 hrs	6 hrs

Average Number of Joints Per Quart of Solvent Cement

These figures are estimates based on laboratory testing. Conditions in the field may vary.

Pipe Diameter	1/2"	3/4"	1"	1-1/4"	1-1/2"	2"	3"	4"	6"	8"
Number Of Joints	325	250	150	125	90	70	50	30	10	8

Average Joint Cure Times for PVC/CPVC Solvent Cements

Joint cure time is the time required before pressure testing the system. In damp or humid weather, allow 50% additional cure time.

Contact Oatey Technical Services for cure times for pipe larger than 8" diameter.

This data is applicable only for new piping installations and not recommended for repair or cut-ins on hot and cold water distribution systems. Please contact Oatey Technical Service for recommendations on cure times for such applications.

Do not test PVC and CPVC piping systems with compressed air or gas.

Notes: Cure schedule is the time required before pressure testing the system

- This chart can be used as a guideline to determine joint cure.
- Cure times stated are for conditions with relative humidity of 60% or less.
- In damp or humid weather allow 50% additional cure time.

PVC & ABS						
Pipe Diameter		Temperature during assembly and cure period				
		60°-100°F 16°-38°C	40°-60°F 4°-16°C	20°-40°F -7°-4°C	0°-20°F -18°- -7°C	
1/2" to 1-1/4" 13 to 32mm	Up to 180 psi	15 min	20 min	30 min	Please contact Oatey Technical Services for cure time information	
	180 psi +	4 hrs	8 hrs	36 hrs		
1-1/2" to 3" 40 to 80mm	Up to 180 psi	30 min	45 min	60 min		
	180 psi +	8 hrs	16 hrs	72 hrs		
4" to 5" 100 to 125mm	Up to 180 psi	2 hrs	4 hrs	36 hrs		
	180 psi +	12 hrs	24 hrs	4 days		
6" to 8" 150 to 200mm	Up to 180 psi	8 hrs	16 hrs	3 days		
	180 psi +	24 hrs	48 hrs	9 days		

CPVC						
Pipe Diameter		Temperature during assembly and cure period				
		60°-100°F 16°-38°C	40°-60°F 4°-16°C	20°-40°F -7°-4°C	0°-20°F -18°- -7°C	
1/2" to 1-1/4" 13 to 32mm	Up to 180 psi	1 hr	2 hrs	Please contact Oatey Technical Services for cure time information		
	180 psi +	6 hrs	12 hrs			
1-1/2" to 3" 40 to 80mm	Up to 180 psi	2 hrs	4 hrs			
	180 psi +	12 hrs	24 hrs			
4" to 5" 100 to 125mm	Up to 180 psi	6 hrs	12 hrs			
	180 psi +	18 hrs	36 hrs			
6" to 8" 150 to 200mm	Up to 180 psi	8 hrs	16 hrs			
	180 psi +	24 hrs	48 hrs			





#31230 shown



Great White® Pipe Joint Compound with PTFE

- Lubricates and seals all threaded joints.
- White, non-hardening, non-separating, non-toxic paste.
- Withstands up to 3,000 PSI on gases from -50 to +400°F, and 10,000 PSI on liquids from -50 to +500°F.
- For use with water, steam, caustics or dilute acid lines.
- Can be used with plastic and metal threads.
- Approved for use on Flowguard Gold, Blazemaster and Corzan piping systems.

Product No.	Size	Description	Ctn. Qty.
31229	1 fl. oz.	Great White Pipe Joint Compound w/ PTFE	12
31230	4 fl. oz.	Great White Pipe Joint Compound w/ PTFE	12
31231	8 fl. oz.	Great White Pipe Joint Compound w/ PTFE	12
31232	16 fl. oz.	Great White Pipe Joint Compound w/ PTFE	24
31233	32 fl. oz.	Great White Pipe Joint Compound w/ PTFE	12



#31202 shown

White General Purpose Thread Seal Tape With PTFE

- Provides a clean, positive seal on threaded connections.
- A high density product that resists tearing and stretching for easy, efficient application.
- Available carded or packaged bulk on spools.
- Complies with Military Spec. No. A-A-58092 & UL 31 RO.
- 3 mils thick, 0.7 grams/cubic centimeter density.

Product No.	Size	Description	Ctn. Qty.
31199	1/2" x 260"	PTFE White Thread Seal Tape	144
31202	1/2" x 520"	PTFE White Thread Seal Tape	144
31212	3/4" x 260"	PTFE White Thread Seal Tape	144



#31403 shown

Yellow Gas Line Thread Seal Tape With PTFE

- Manufactured especially for natural gas, propane, butane, water, oil and chemical lines.
- Heavier than white tape with density of 1.35-1.50 grams/cubic centimeters, 4 mils thick.
- Complies with MIL-T-22230A (ASG), UL 31 RO, AGA 3226 and CAN/ULC-S642.
- Packaged on spools in convenient dispenser box.

Product No.	Size	Description	Ctn. Qty.
31403	1/2" x 260"	PTFE Yellow Thread Seal Tape – Dispenser Pack	100
31403D	1/2" x 260"	PTFE Yellow Thread Seal Tape – Display	20



#31402 shown

Pink Water Line Thread Seal Tape With PTFE

- Provides fast positive seal for water lines, sewage lines and sprinkler systems.
- Effective on metal or plastic threads.
- Complies with Mil. Spec. A-A 58092.
- Pink tape is 3 mils thick with density of 1.35-1.50 grams/cubic centimeter.
- Packaged on spools in a display carton.

Product No.	Size	Description	Ctn. Qty.
31402D	1/2" x 260"	PTFE Pink Thread Seal Tape – Display	50





Megatape

- High density.
- Recommended by professionals.
- Extra-large spool.
- Approved for use with gas and UL Listed.

Product No.	Size	Description	Ctn. Qty.
15050D	1/2" x 260"	Gray PTFE Tape, display box	120
15100	1/2" x 1000"	Gray PTFE Tape, display box	63
15110	3/4" x 1000"	Gray PTFE Tape, display box	45
15120	1" x 1000"	Gray PTFE Tape, display box	36



#15806 shown



Megaloc®

- Made with DuPont™ Kevlar®.
- Wipes easily from hands and tools with dry rag.
- No odor - Soft setting - Non Flammable - Low VOC.
- High performing thread sealant.
- Grit-free.
- Withstands hydraulic pressure to 12,000 psi and gas pressure to 2600 psi at temperatures from -50° to +400°F (on steel pipe).
- For use on metal or plastic pipe - including ABS.

Product No.	Size	Description	Ctn. Qty.
15802	1.1 fl oz.	Megaloc – Display, Plastic Tube	24
15804	1/4 pt.	Megaloc – Screw Cap With Brush	24
15806	1/2 pt.	Megaloc – Screw Cap With Brush	24
15808	1 pt.	Megaloc – Screw Cap With Brush	12
15811	1 qt.	Megaloc – Screw Cap With Brush	12
15814	Gallon	Megaloc	4
15816	5 gal.	Megaloc	1
15818	55 gal.	Megaloc	1





#45802 shown



Megabubble® Leak Detector

- Detects even the smallest gas leaks.
- Produces long-lasting bubbles.
- Clings, even to vertical surfaces.
- Non-toxic, non-corrosive formula.
- Won't freeze.

Product No.	Size	Description	Ctn. Qty.
45801	8 oz.	Megabubble Leak Detector – With Dauber	24
45804	16 oz.	Megabubble Leak Detector – With Sprayer – Display Pack	12
45802	32 oz.	Megabubble Leak Detector – With Sprayer	12
45803	Gallon	Megabubble Leak Detector – Refill Container	4



#22017 shown



95/5 Lead Free Plumbing Wire Solder

- Lead free alloy of 95% tin and 5% antimony.
- 450°F – 464°F melting range.
- Meets the requirements of the Safe Water Drinking Act.
- Most commonly used where frequent and extreme temperature changes and vibrations occur.

Product No.	Size	Description	Gauge	Ctn. Qty.
BULK				
22004	1/2 lb.	95/5 Wire Solder	.117"	10
22018	1 lb.	95/5 Wire Solder	.117"	10
22017	1 lb.	95/5 Wire Solder	.117"	25
29031	1 oz.	95/5 Wire Solder	.063"	20

CARDED

53026	1 oz.	95/5 Wire Solder	.081"	12
53181	1 oz.	95/5 Wire Solder*	.081"	12
53027	1/4 lb.	95/5 Wire Solder	.081"	12

*Packaged without inner display carton.



#20973 shown



97/3 Silver Lead Free Wire Solder

- Copper, bismuth, tin and silver alloy.
- 420°F - 460°F melting range.
- Meets ASTM Standard B-32 and the requirements of the Safe Water Drinking Act.
- Formulated for plumbing/potable water line applications.

Product No.	Size	Description	Gauge	Ctn. Qty.
20973	1 lb.	97/3 Lead Free Wire Solder	.117"	25





#30011 shown


No. 5 Paste Flux

- Cleans and fluxes at the same time.
- Effective on all metals except aluminum, magnesium and stainless steel.
- 100% lead free.
- Blended to clean surface oxidation.

Product No.	Size	Description	Ctn. Qty.
30011	1.7 oz.	No. 5 Flux	12
53017	1.7 oz.	No. 5 Flux w/ Brush – Carded	12
53200	1.7 oz.	No. 5 Flux w/ Brush – Carded*	12
30013	4 oz.	No. 5 Flux	24
30014	8 oz.	No. 5 Flux	24
30041	16 oz.	No. 5 Flux	12

*Packaged without inner display carton.



#30373 shown


No. 95 Tinning Flux

- Formulated with the same high quality as No. 5. Oatey Safe Flo Alloy powder is added to pre-tin the copper pipe.
- 100% lead free.
- Excellent for large diameter copper.

Product No.	Size	Description	Ctn. Qty.
30374	1.7 oz.	No. 95 Tinning Flux – Lead Free	12
30373	1.7 oz.	No. 95 Tinning Flux – Lead Free – Carded	12
53201	1.7 oz.	No. 95 Tinning Flux – Lead Free – Carded*	12
30372	8 oz.	No. 95 Tinning Flux – Lead Free	24
30375	16 oz.	No. 95 Tinning Flux – Lead Free	12

*Packaged without inner display carton.



#30130 shown

 U.S. Patent No.
6,752,309

H-20^{®5} Paste Flux

- Water flushable.
- As thick as No. 5 flux.
- Meets ASTM B-813.

Product No.	Size	Description	Ctn. Qty.
30130	1.7 oz.	H-20 ⁵ Water Soluble Paste Flux	12
53067	1.7 oz.	H-20 ⁵ Water Soluble Paste Flux – Carded	12
30131	4 oz.	H-20 ⁵ Water Soluble Paste Flux	24
30132	8 oz.	H-20 ⁵ Water Soluble Paste Flux	24
30133	16 oz.	H-20 ⁵ Water Soluble Paste Flux	12



#30140 shown

 U.S. Patent No.
6,752,309

H-20⁹⁵ Water Soluble Tinning Flux

- Water soluble tinning flux base.
- As thick as No. 5 flux.
- Solder powder added to pre-tin the pipe.

Product No.	Size	Description	Ctn. Qty.
30140	1.7 oz.	H-20 ⁹⁵ Water Soluble Tinning Flux	12
53068	1.7 oz.	H-20 ⁹⁵ Water Soluble Tinning Flux – Carded	12
30142	8 oz.	H-20 ⁹⁵ Water Soluble Tinning Flux	24
30143	16 oz.	H-20 ⁹⁵ Water Soluble Tinning Flux	12



No. 5 Hot Weather Flux

- Specially formulated to remain a paste up to 135°F.

Product No.	Size	Description	Ctn. Qty.
30062	16 oz.	No. 5 Paste Flux – Hot Weather	12

No. 11 Liquid Flux

- Formulated with strong cleaning agent.
- Ensures fast and effective soldering operation.
- Can be used for HVAC applications.

Product No.	Size	Description	Ctn. Qty.
30106	4 oz.	No. 11 Liquid Flux	12



Acid Brushes

- Perfect brush for applying liquid or paste fluxes.
- Approximately 5" long, 1/2" wide.

Product No.	Size	Description	Ctn. Qty.
30710	1/2"	Acid Brush – Carded	12
30711	1/2"	Acid Brush – Bulk (per gross of 144)	1
30712	1/2"	Acid Brush – with Barcode	144



ABRASIVE CLOTH



#45013 shown

Hercules® Waterproof Abrasive Open Mesh Dispenser Box

- For cleaning and preparing copper pipe and fittings for soldering.
- Made with resin-bonded 180 grit aluminum oxide.
- Water-proof.
- Easily cleaned.

Product No.	Size	Description	Ctn. Qty.
45011	1-1/2" x 5 yds.	Hercules Waterproof Abrasive Open Mesh Dispenser Box	24
45013	1-1/2" x 10 yds.	Hercules Waterproof Abrasive Open Mesh Dispenser Box	24



#45025 shown

Hercules® Waterproof Abrasive Sandcloth Dispenser Box

- For cleaning copper pipe and fittings and other soft metals.
- Use for deburring and roughing copper tubing, as well as plastic pipe.
- Made with water-resistant, resin-bonded 120 grit aluminum oxide.

Product No.	Size	Description	Ctn. Qty.
45025	1-1/2" x 10 yds.	Hercules Waterproof Abrasive Sandcloth Dispenser Box	24
45030	1-1/2" x 25 yds.	Hercules Waterproof Abrasive Sandcloth Dispenser Box	12



#31404 shown

Heavy Duty Fitting Brush

- Easy to use, contoured, heavy duty handle is perfect for cleaning copper and brass fittings fast and effectively.
- High carbon twisted steel shaft and brush gives long life and durability.

Product No.	Size	Description	Ctn. Qty.
31327	1/2"	ID Fitting Brush w/ Heavy Duty Handle	12
31404	1/2"	ID Fitting Brush w/ Heavy Duty Handle Carded	10
31328	3/4"	ID Fitting Brush w/ Heavy Duty Handle	12
31405	3/4"	ID Fitting Brush w/ Heavy Duty Handle Carded	10
31329	1"	ID Fitting Brush w/ Heavy Duty Handle	12
31406	1"	ID Fitting Brush w/ Heavy Duty Handle Carded	10
31330	1-1/4"	ID Fitting Brush w/ Heavy Duty Handle	12
31331	1-1/2"	ID Fitting Brush w/ Heavy Duty Handle	6
31332	2"	ID Fitting Brush w/ Heavy Duty Handle	6



#31348 shown

4-In-1 Brush

- Includes long lasting high carbon steel brushes for cleaning the I.D. and hand tempered steel for cleaning the O.D. of 1/2" and 3/4" copper tube and fittings.

Product No.	Size	Description	Ctn. Qty.
31407	1/2" & 3/4"	4-in-1 brush – Carded	10
31348	1/2" & 3/4"	4-in-1 brush	12



#31412 shown

O.D. Tube Cleaning Brush

- Cleans the outside of copper tube before soldering.
- The easy-to-grip brush ensures a clean surface and prepares the pipe for soldering.

Product No.	Size	Description	Ctn. Qty.
31345	1/2"	O.D. tube brush	12
31412	1/2"	O.D. tube brush – Carded	10
31346	3/4"	O.D. tube brush	12
31413	3/4"	O.D. tube brush – Carded	10
31347	1"	O.D. tube brush	12
31414	1"	O.D. tube brush – Carded	10



Specialty Brushes

- Stainless steel bristled brush for cleaning threads on hard metal pipes.
- For cleaning pipe and fittings and general use.

Product No.	Size	Description	Ctn. Qty.
31410		Specialty brushes – Carded	10

COPPER INSTALLATION





PUTTY, CAULK AND SEALANT



Fix-It™ Stick Epoxy Putty

- Convenient multi-purpose sealing, patching and mending compound.
- Steel filled material, mixes in your hand and hardens in minutes.
- May be drilled, tapped, filed, sanded, sealed and painted when hardened.
- Non-toxic material contains no solvents and will not shrink.

Product No.	Size	Description	Ctn. Qty.
31270	4 oz.	Fix-It Stick Epoxy Putty	12



Pro-Poxy® 20

- Makes steel reinforced repairs in just 20 minutes.
- Kneads quickly and easily.
- Seals, mends, bonds and repairs almost anything, even underwater.
- Adheres to metals, masonry, wood, glass, and ceramics.
- When cured, may be drilled, sanded, filed and painted.
- Conforms to NSF standard 61 for use with potable water.

Product No.	Size	Description	Ctn. Qty.
25515	4 oz.	ProPoxy 20 – Display Pack	24



Plastic Poxy™

- For most plastics.
- Fully hardens in 40 minutes.
- Kneads quickly and easily.

Product No.	Size	Description	Ctn. Qty.
25531	4 oz.	Plastic Poxy – Display Pack	24



ProPoxy® Triple Play Putty

- Three epoxies in one, handy package.
- Hercules ProPoxy 20, Copper Poxy and Plastic Poxy included.
- Cures in minutes.

Product No.	Size	Description	Ctn. Qty.
25527	4 oz.	ProPoxy Triple Play Putty Display Pack	24



TAPE



#014398 shown

Duct Tape

- Repairs HVAC systems, mends pool liners, vinyl upholstery, hose breaks, stops minor plumbing leaks and seals windows.
- Polycloth has a rubber resin adhesive that offers superior laminate strength.
- Ideal where adhesion to many kinds of surfaces is necessary.
- Straight tear and minimum curl make it easy to apply.

Product No.	Size	Description	Carton Wt. (Lbs)	Ctn. Qty.
014398	2" x 60 YD	Duct Tape – Silver	33	24
014390	2" x 60 YD	Duct Tape – Black	39.456	24



Hercules For Hands™ – Lemon Lotion Hand Cleaner

- Professional strength cleaner formulated with pumice.
- Citrus scent.

Product No.	Size	Description	Ctn. Qty.
45314	16 oz.	Hercules For Hands – Lemon Lotion Hand Cleaner – Flip Top Cap	12



Hercules For Hands™ – Pumice Lotion Hand Cleaner

- Professional strength cleaner formulated with pumice.
- Protects and moisturizes hands with aloe vera, vitamin E and lanolin.

Product No.	Size	Description	Ctn. Qty.
45325	16 oz.	Hercules For Hands – Pumice Lotion Hand Cleaner – Flip Top Cap	12



Hercules For Hands™ - Pre-Moistened Towels

- Formulated for trade professionals – even removes plastic pipe cement.
- Anti-bacterial, ready-to-use.

Product No.	Size	Description	Ctn. Qty.
45333	12" x 10"	Hercules For Hands - Pre-Moistened Towels - Dispenser Tub of 70 Towels	6
45333T	12" x 10"	Hercules For Hands - Pre-Moistened Towels - Pop Display of 30 Tubs	30
45337	12" x 10"	Hercules For Hands - Pre-Moistened Towels - Thin Tub -25 Per Tub	6

#45333 shown



HERCULES FOR HANDS™
Tower of Tubs Merchandiser

Holds thirty tubs in a small footprint display.





#40120 shown

Cutting Oil

- Contains activated sulfur-lard and extreme pressure-antiwear additives.
- Contains no nitrosamine-forming compounds or chlorine additives.
- Excellent lubrication for cutting sharp threads.

Product No.	Size	Description	Ctn. Qty.
40110	1 pt.	Cutting Oil - Clear	12
40115	1 qt.	Cutting Oil - Clear	12
40120	Gallon	Cutting Oil - Clear	6
40125	5 gal.	Cutting Oil - Clear	1
40210	1 pt.	Cutting Oil - Dark	12
40215	1 qt.	Cutting Oil - Dark	12
40220	Gallon	Cutting Oil - Dark	6
40225	5 gal.	Cutting Oil - Dark	1
40240	55 gal.	Cutting Oil - Dark	1



#40506 shown

Duck Butter®

- Dissolves in hot water.
- Adheres to wet and dry surfaces.
- Non-toxic, soft, paste-like material for lubricating bell joint pipe gaskets.
- Will not deteriorate natural or synthetic rubber.
- Will not support bacteria.

Product No.	Size	Description	Ctn. Qty.
40501	2 lb.	Duck Butter	12
40506	8 lb.	Duck Butter	4



Certified to NSF/ANSI 61



#35260 shown

Cryo-Tek™ Original

- Virgin propylene glycol antifreeze.
- Pre-mixed, ready to use formula with triple protection inhibitor package.
- For use in ornamental fountains, snow melting, etc.
- Blue liquid.
- Specific dilutions for various temperature protection levels.
- For freeze protection details, view the submittal sheet at <http://www.oatey.com/doc/cryotek.pdf>.

Product No.	Size	Description	Ctn. Qty.
35253	Gallon	Cryo-Tek Original	6
35260	5 gal.	Cryo-Tek Original	1
35267	55 gal.	Cryo-Tek Original	1



#35284 shown

Cryo-Tek™-100

- Contains virgin (not recycled) propylene glycol with triple protection corrosion inhibitor.
- Pre-mixed ready to use formulation.
- Pink liquid.
- For freeze protection details, view the submittal sheet at <http://www.oatey.com/doc/cryotek.pdf>.

Product No.	Size	Description	Ctn. Qty.
35281	Gallon	Cryo-Tek-100	6
35284	5 gal.	Cryo-Tek-100	1
35286	30 gal.	Cryo-Tek-100	1
35287	55 gal.	Cryo-Tek-100	1



#35283 shown

Cryo-Tek™-100/A_L for Aluminum

- Special formula for aluminum heat exchange boilers.
- Orange liquid.
- Compatible with PEX and elastomeric radiant tubing.
- For freeze protection details, view the submittal sheet at <http://www.oatey.com/doc/cryotek.pdf>.

Product No.	Size	Description	Ctn. Qty.
35283	5 gal.	Cryo-Tek-100/A _L for Aluminum	1
35291	55 gal.	Cryo-Tek-100/A _L for Aluminum	1



#35285 shown

Cryo-Tek™ AG

- Concentrated "arctic grade" anti-freeze solution.
- Blue liquid.
- 100% pure virgin propylene glycol/triple protection inhibitor package.
- For freeze protection details, view the submittal sheet at <http://www.oatey.com/doc/cryotek.pdf>.

Product No.	Size	Description	Ctn. Qty.
35282	Gallon	Cryo-Tek AG	6
35285	5 gal.	Cryo-Tek AG	1
35288	30 gal.	Cryo-Tek AG	1
35289	55 gal.	Cryo-Tek AG	1





new
From Hercules®



#35331 shown

UNIVERSAL CRYO-TEK™

**97% Concentrated Solution.
Formulated for Use on All Metals.**

Our triple-protection inhibitor package stabilizes pH to prevent corrosion, chelates, hard water minerals, and inhibits the formation of scale and sediment.

- > Keeps system clean and operating efficiently.
- > Improves heat transfer and minimizes wear to moving parts.
- > Meets and exceeds the corrosion protection requirements of ASTM D1384.

Certified Performance

Freeze Protection Down To	Pumpable Down To	Burst Protection Down To
-70°F / -57°C	-80°F / -62°C	-100°F / -73°C

Product No.	Size	Description	Ctn. Qty.
35330	Gallon	Universal Cryo-Tek	6
35331	5 gal.	Universal Cryo-Tek	1
35332	55 gal.	Universal Cryo-Tek	1

For application, freeze protection and specific dilutions view submittal sheet at herchem.com

new
From Hercules®



#35341 shown

CRYO-TEK™ FG

CRYO-TEK is GOING GREEN! Concentrated solution with 96% Food Grade propylene glycol.

- > Safe for use in contact with potable water systems, water testing, geo-thermal loops, and DWV systems.
- > Approved for use with copper, steel, iron, brass, PEX, and elastomeric tubing (not for use with galvanized, CPVC, and aluminum).
- > Meets and exceeds the corrosion protection requirements of ASTM D1384.

Certified Performance

Freeze Protection Down To	Pumpable Down To	Burst Protection Down To
-70°F / -57°C	-80°F / -62°C	-100°F / -73°C

Product No.	Size	Description	Ctn. Qty.
35340	Gallon	Cryo-Tek Food Grade	6
35341	5 gal.	Cryo-Tek Food Grade	1
35342	55 gal.	Cryo-Tek Food Grade	1

For application, freeze protection and specific dilutions view submittal sheet at herchem.com





#33918 shown

Metal Hanger Strap

- Quick and inexpensive way to hang pipe from joists or rafters.
- Available in 24 and 28 gauge steel.

Product No.	Size	Description	Ctn. Qty.
33918	3/4" x 10'	24 Ga. Copper-Plated Steel Hanger Strap – Bagged	12 PCS.
33730	3/4" x 10'	24 Ga. Galvanized Steel Hanger Strap – Bagged	12 PCS.
33889	3/4" x 100'	28 Ga. Galvanized Steel Hanger Strap – Boxed	10 PCS.
33923	3/4" x 10'	28 Ga. Galvanized Steel Hanger Strap – Bagged	12 PCS.
33929	3/4" x 25'	28 Ga. Galvanized Steel Hanger Strap – Bagged	12 PCS.
33922	3/4" x 50'	28 Ga. Galvanized Steel Hanger Strap – Bulk	10 PCS.

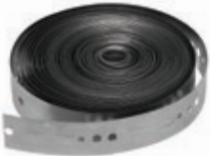


#33925 shown

Plastic Hanger Strap

- Nail holes are 1/8" in diameter and spaced 3/4" apart.
- Non-corrosive, non-conductive, polyethylene.
- Quick and inexpensive way to hang pipe from joists or rafters.

Product No.	Size	Description	Ctn. Qty.
33928	3/4" x 10'	Plastic Hanger Strap – Bagged	12 PCS.
33925	3/4" x 25'	Plastic Hanger Strap – Bagged	20 PCS.
33926	3/4" x 50'	Plastic Hanger Strap – Bagged	20 PCS.
33927	3/4" x 100'	Plastic Hanger Strap – Bagged	20 PCS.



#33992 shown

Tab Tape®

- Self-fastening Hanger Strap.
- No nuts or bolts required.

Tab Tape® is a registered trademark of Hang it All Products.

Product No.	Size	Description	Ctn. Qty.
33989	3/4" x 10'	Galvanized Tab Tape – 28 Ga. – Bagged	12 PCS.
33992	1-1/2" x 50'	Galvanized Tab Tape – 26 Ga. – Boxed	5 PCS.





#42235 shown

131 Series Two Part Adjustable Slab Drain

- Ideal for installations on a slab where a pan liner membrane is not required.
- Available with high quality stainless steel strainer, brass or nickel finish cast grates for heavy traffic applications.
- Drain base engineered as hub for 2" Sch. 40 pipe or solvent welds inside 3" Sch. 40 pipe.
- Available with both round and square strainer top.

Product No.	Size	Description	Ctn. Qty.
42235	2" or 3"	PVC drain w/ round stainless steel Screw-Tite strainer	20
42236	2" or 3"	ABS drain w/ round stainless steel Screw-Tite strainer	20
42380	2" or 3"	PVC drain w/ round brass cast grate w/ round ring	6
42381	2" or 3"	ABS drain w/ round brass cast grate w/ round ring	6
42384	2" or 3"	PVC round nickel cast grate w/ round ring	6
42385	2" or 3"	ABS round nickel cast grate w/ round ring	6
42386	2" or 3"	PVC round nickel cast grate w/ square ring	6
42387	2" or 3"	ABS round nickel cast grate w/ square ring	6
42388	2" or 3"	PVC drain w/ square stainless steel Snap-Tite strainer	20
42389	2" or 3"	ABS drain w/ square stainless steel Snap-Tite strainer	20



#76032 shown

Sediment Drains

- Commercial grade multipurpose drain for effective effluent removal.
- Optional sediment bucket – removable and will keep drain lines free of debris.
- Grate assemblies available in PVC, ABS, and Cast Iron.

		Plastic Sediment		Cast Iron Sediment	
		Bucket	w/o Bucket	Bucket	w/o Bucket
PVC Drain	2" Pipe	76012	76022	76032	76042
	3" or 4" Pipe	76013	76023	76033	76043
	4" Pipe	76014	76024	76034	76044
	6" Pipe	76016	76026	76036	76046
ABS Drain	2" Pipe	86012	86022	86032	86042
	3" or 4" Pipe	86013	86023	86033	86043
	4" Pipe	86014	86024	86034	86044
	6" Pipe	86016	86026	86036	86046

**COMPLETE DRAIN,
COMPLETE LINE,
COMPLETE SOLUTION.**
*Easy leveling drain for
a “True Set” every time.*

The Oatey® True Set™ adjustable drain uses an easy-leveling strainer mount to correct tilted drains! This unique, patent pending design quickly solves the problem of drain installs knocked out of plumb after the concrete is poured.

That along with the highest post-pour height adjustment in the industry means the Oatey True Set adjustable drain gives you a level installation to the finished floor every time! See page 42 for a complete product list.

- **Complete Versatility**
 - Ready for use right out of the box
 - Provides a level installation to the finished floor every time
 - Concrete tight protection
 - Interchangeable drain and cleanout
 - Multiple sizes, materials and finishes available
- **Complete Confidence / Post Pour Leveling**
 - Largest adjustment range in the industry
 - Height and pitch adjustments
- **Complete Assembly**
 - No spare parts to lose
- **Complete Safety / Load Capacity**
 - C-UPC listed and medium duty IAPMO rated



Part Number Legend (Example: TP211S)


T	P	2	1	1	S
T- True-Set	P- PVC	2- 2" Outside/3" Inside Solvent	1- Flanged Drain	1- 5" Round	S- Stainless Steel
	A- ABS	3- 3" Outside/4" Inside Solvent	2- Flanged CO	2- 5" Round w/ Ring	B- Brass
		4- 4" Outside Solvent	3- GP Drain	3- 6" Round	N- Nickel Bronze
			4- GP CO	4- 6" Round w/ Ring	C- Chrome
			5- SS Flanged Drain	5- 5" Square w/ Ring	
			6- SS Flanged CO	6- 6" Square w/ Ring	

		Die Cast Nickel Strainer		
			Round w/Ring	Square w/Ring
5" Strainer	PVC On-Grade Base	Over 2" / Inside 3" Pipe Fit	TP232N	TP235N
		Over 3" / Inside 4" Pipe Fit	TP332N*	TP335N
		Over 4" Pipe Fit	TP432N*	TP435N*
6" Strainer	PVC Flange Base	Over 3" / Inside 4" Pipe Fit	TP312N*	TP315N
		Over 3" / Inside 4" Pipe Fit	TP334N	TP336N
		Over 4" Pipe Fit	TP434N*	TP436N
	PVC Flange Base	Over 4" Pipe Fit	TP414N*	TP416N

(*) indicates drain only conforms to CSA B79.
All drain part numbers not marked with (*) or (+) meet ASME A112.6.3 and CSA B79 commercial drain standards.

Part Number Legend (Example: TP211S)


T	P	2	1	1	S
T- True-Set	P- PVC	2- 2" Outside/3" Inside Solvent	1- Flanged Drain	1- 5" Round	S- Stainless Steel
	A- ABS	3- 3" Outside/4" Inside Solvent	2- Flanged CO	2- 5" Round w/ Ring	B- Brass
		4- 4" Outside Solvent	3- GP Drain	3- 6" Round	N- Nickel Bronze
			4- GP CO	4- 6" Round w/ Ring	C- Chrome
			5- SS Flanged Drain	5- 5" Square w/ Ring	
			6- SS Flanged CO	6- 6" Square w/ Ring	

		Die Cast Nickel Strainer – Round w/Ring		
5" Clean-out	PVC On-Grade Base	Over 3" / Inside 4" Pipe Fit	TP342N	
		Over 4" Pipe Fit	TP442N	
	PVC Flange Base	Over 3" / Inside 4" Pipe Fit	TP322N	
6" Clean-out	PVC On-Grade Base	Over 3" / Inside 4" Pipe Fit	TP344N	
		Over 4" Pipe Fit	TP444N	
	PVC Flange Base	Over 4" Pipe Fit	TP424N	

All Cleanouts meet both ASME A112.6.3 & CSA B79 standards. Note: Strainers and Covers are medium duty load rated.


True Set™ Leveling Kit

6"	PVC	TP6KIT
	ABS	TAGKIT


True Set™ Tamper Proof Machine Screws w/ Driver

Stainless Steel	For use with Nickel and Chrome Finishes	TP007
-----------------	---	-------


True Set™ Sediment Strainer

Sediment Strainer	TP009
-------------------	-------



#42786 shown

All-Plastic 3" x 4" Snap-In Cleanout Assemblies

Product No.	Size	Description	Ctn. Qty.
42785	3" or 4"	ABS Snap-In Cleanout Assembly	12
42786	3" or 4"	PVC Snap-In Cleanout Assembly	12



#43711 shown

All-Plastic 2" x 3" Snap-In Cleanout Assemblies

Product No.	Size	Description	Ctn. Qty.
43710	2" or 3"	ABS Snap-In Cleanout Assembly	12
43711	2" or 3"	PVC Snap-In Cleanout Assembly	12



Four-Way Area Drain

- Fits over 2" or 3" Schedule 40 DWV pipe.
- General purpose drain for use in garages and utility rooms.
- Sump for large capacity.

Product No.	Size	Description	Ctn. Qty.
43596	2" or 3"	Four-Way Area Drain, PVC	10



#43733 shown

All-Plastic Snap-In Cleanout Assemblies

- Fits inside of Sch. 40 DWV pipe fitting.

Product No.	Size	Description	Ctn. Qty.
43730	3"	ABS Snap-In Cleanout Assembly	12
43731	3"	PVC Snap-In Cleanout Assembly	12
43732	4"	ABS Snap-In Cleanout Assembly	12
43733	4"	PVC Snap-In Cleanout Assembly	12
43764	2-1/3"	ABS Replacement Plug for the 3" and the 2" or 3" Cleanout Assemblies	6
43765	2-1/3"	PVC Replacement Plug for the 3" and the 2" or 3" Cleanout Assemblies	6
43766	3-1/2"	ABS Replacement Plug for the 4" regular and the 3" Hub Cleanout Assemblies	6
43767	3-1/2"	PVC Replacement Plug for the 4" regular and the 3" Hub Cleanout Assemblies	6





NUMERICAL LISTING

NUMERICAL LISTING

Product Number	Size	Description	Ctn. Qty.	UPC	Category	Page Number
1224	Gallon	PVC Medium Clear	6	083675012240	Plastic Pipe Cements and Primers	7
1236S	32 oz.	PVC Medium Clear	12	083675012363	Plastic Pipe Cements and Primers	7
1246S	16 oz.	PVC Medium Clear	24	083675012462	Plastic Pipe Cements and Primers	7
1256S	8 oz.	PVC Medium Clear	24	083675012561	Plastic Pipe Cements and Primers	7
1266S	4 oz.	PVC Medium Clear	24	083675012660	Plastic Pipe Cements and Primers	7
1524	Gallon	PVC Heavy Duty Clear	6	083675015241	Plastic Pipe Cements and Primers	7
1536S	32 oz.	PVC Heavy Duty Clear	12	083675015364	Plastic Pipe Cements and Primers	7
1546S	16 oz.	PVC Heavy Duty Clear	24	083675015463	Plastic Pipe Cements and Primers	7
1556S	8 oz.	PVC Heavy Duty Clear	24	083675015562	Plastic Pipe Cements and Primers	7
1566S	4 oz.	PVC Heavy Duty Clear	24	083675015661	Plastic Pipe Cements and Primers	7
1624	Gallon	PVC Medium Gray	6	083675016248	Plastic Pipe Cements and Primers	7
1636S	32 oz.	PVC Medium Gray	12	083675016361	Plastic Pipe Cements and Primers	7
1646S	16 oz.	PVC Medium Gray	24	083675016460	Plastic Pipe Cements and Primers	7
1656S	8 oz.	PVC Medium Gray	24	083675016569	Plastic Pipe Cements and Primers	7
1666S	4 oz.	PVC Medium Gray	24	083675016668	Plastic Pipe Cements and Primers	7
1724	Gallon	PVC Heavy Duty Gray – Wide Mouth Can	6	083675017245	Plastic Pipe Cements and Primers	8
1736S	32 oz.	PVC Heavy Duty Gray	12	083675017368	Plastic Pipe Cements and Primers	8
1746S	16 oz.	PVC Heavy Duty Gray	24	083675017467	Plastic Pipe Cements and Primers	8
1824	Gallon	Extra Heavy Duty Gray – Wide Mouth Can	6	083675018242	Plastic Pipe Cements and Primers	8
1836S	32 oz.	Extra Heavy Duty Gray	12	083675018365	Plastic Pipe Cements and Primers	8
2024	Gallon	Plumb-Tite PVC Medium "Hot" Blue	6	083675020245	Plastic Pipe Cements and Primers	4
2036S	32 oz.	Plumb-Tite PVC Medium "Hot" Blue	12	083675020368	Plastic Pipe Cements and Primers	4
2046S	16 oz.	Plumb-Tite PVC Medium "Hot" Blue	24	083675020467	Plastic Pipe Cements and Primers	4
2056S	8 oz.	Plumb-Tite PVC Medium "Hot" Blue	24	083675020566	Plastic Pipe Cements and Primers	4
2066S	4 oz.	Plumb-Tite PVC Medium "Hot" Blue	24	083675020665	Plastic Pipe Cements and Primers	4
2224	Gallon	PVC Regular Clear	6	083675022249	Plastic Pipe Cements and Primers	8
2236S	32 oz.	PVC Regular Clear	12	083675022362	Plastic Pipe Cements and Primers	8
2246S	16 oz.	PVC Regular Clear	24	083675022461	Plastic Pipe Cements and Primers	8
2256S	8 oz.	PVC Regular Clear	24	083675022560	Plastic Pipe Cements and Primers	8
2266S	4 oz.	PVC Regular Clear	24	083675022669	Plastic Pipe Cements and Primers	8
2324	Gallon	Pool-Tite PVC Medium "Hot" Blue	6	083675023246	Plastic Pipe Cements and Primers	4
2336S	32 oz.	Pool-Tite PVC Medium "Hot" Blue	12	083675023369	Plastic Pipe Cements and Primers	4
2346S	16 oz.	Pool-Tite PVC Medium "Hot" Blue	24	083675023468	Plastic Pipe Cements and Primers	4
2356S	8 oz.	Pool-Tite PVC Medium "Hot" Blue	24	083675023567	Plastic Pipe Cements and Primers	4
2366S	4 oz.	Pool-Tite PVC Medium "Hot" Blue	24	083675023666	Plastic Pipe Cements and Primers	4
2424	Gallon	Turf-Tite PVC Medium "Hot" Blue	6	083675024243	Plastic Pipe Cements and Primers	6
2436S	32 oz.	Turf-Tite PVC Medium "Hot" Blue	12	083675024366	Plastic Pipe Cements and Primers	6
2446S	16 oz.	Turf-Tite PVC Medium "Hot" Blue	24	083675024465	Plastic Pipe Cements and Primers	6
2456S	8 oz.	Turf-Tite PVC Medium "Hot" Blue	24	083675024564	Plastic Pipe Cements and Primers	6
2466S	4 oz.	Turf-Tite PVC Medium "Hot" Blue	24	083675024663	Plastic Pipe Cements and Primers	6
2624	Gallon	Polar-Weld PVC All Weather	6	083675026247	Plastic Pipe Cements and Primers	9
2636S	32 oz.	Polar-Weld PVC All Weather	12	083675026360	Plastic Pipe Cements and Primers	9
2646S	16 oz.	Polar-Weld PVC All Weather	24	083675026469	Plastic Pipe Cements and Primers	9
2656S	8 oz.	Polar-Weld PVC All Weather	24	083675026568	Plastic Pipe Cements and Primers	9
2666S	4 oz.	Polar-Weld PVC All Weather	24	083675026667	Plastic Pipe Cements and Primers	9
2736S	32 oz.	Multi-Tite PVC Medium "Hot" Blue	12	083675027367	Plastic Pipe Cements and Primers	5
2746S	16 oz.	Multi-Tite PVC Medium "Hot" Blue	24	083675027466	Plastic Pipe Cements and Primers	5
2756S	8 oz.	Multi-Tite PVC Medium "Hot" Blue	24	083675027565	Plastic Pipe Cements and Primers	5
2766S	4 oz.	Multi-Tite PVC Medium "Hot" Blue	24	083675027664	Plastic Pipe Cements and Primers	5
2824	Gallon	PVC Regular Clear Fast Set	6	083675028241	Plastic Pipe Cements and Primers	9
2836S	32 oz.	PVC Regular Clear Fast Set	12	083675028364	Plastic Pipe Cements and Primers	9
2846S	16 oz.	PVC Regular Clear Fast Set	24	083675028463	Plastic Pipe Cements and Primers	9
2856S	8 oz.	PVC Regular Clear Fast Set	24	083675028562	Plastic Pipe Cements and Primers	9
2866S	4 oz.	PVC Regular Clear Fast Set	24	083675028661	Plastic Pipe Cements and Primers	9
2936S	32 oz.	Pool-Clear PVC Medium Clear	12	083675029361	Plastic Pipe Cements and Primers	4
2946S	16 oz.	Pool-Clear PVC Medium Clear	24	083675029460	Plastic Pipe Cements and Primers	4
3024	Gallon	Well-Tite PVC Medium "Hot" Blue	6	083675302419	Plastic Pipe Cements and Primers	6
3036S	32 oz.	Well-Tite PVC Medium "Hot" Blue	12	083675303621	Plastic Pipe Cements and Primers	6
3046S	16 oz.	Well-Tite PVC Medium "Hot" Blue	24	083675304635	Plastic Pipe Cements and Primers	6
3236S	32 oz.	CPVC Medium Orange	12	083675032361	Plastic Pipe Cements and Primers	10
3246S	16 oz.	CPVC Medium Orange	24	083675032460	Plastic Pipe Cements and Primers	10
3256S	8 oz.	CPVC Medium Orange	24	083675032569	Plastic Pipe Cements and Primers	10
3266S	4 oz.	CPVC Medium Orange	24	083675032668	Plastic Pipe Cements and Primers	10
4436S	32 oz.	ABS Medium Black	12	083675044364	Plastic Pipe Cements and Primers	10
4446S	16 oz.	ABS Medium Black	24	083675044463	Plastic Pipe Cements and Primers	10
4456S	8 oz.	ABS Medium Black	24	083675044562	Plastic Pipe Cements and Primers	10
4466S	4 oz.	ABS Medium Black	24	083675044661	Plastic Pipe Cements and Primers	10
6236S	32 oz.	Multi-Purpose Regular Clear	12	083675062368	Plastic Pipe Cements and Primers	10





Product Number	Size	Description	Ctn. Qty.	UPC	Category	Page Number
6246S	16 oz.	Multi-Purpose Regular Clear	24	083675062467	Plastic Pipe Cements and Primers	10
6256S	8 oz.	Multi-Purpose Regular Clear	24	083675062566	Plastic Pipe Cements and Primers	10
6266S	4 oz.	Multi-Purpose Regular Clear	24	083675062665	Plastic Pipe Cements and Primers	10
7324	Gallon	Clear Cleaner	6	083675073241	Plastic Pipe Cements and Primers	11
7336S	32 oz.	Clear Cleaner	12	083675073364	Plastic Pipe Cements and Primers	11
7346S	16 oz.	Clear Cleaner	24	083675073463	Plastic Pipe Cements and Primers	11
7356S	8 oz.	Clear Cleaner	24	083675073562	Plastic Pipe Cements and Primers	11
7366S	4 oz.	Clear Cleaner	24	083675073661	Plastic Pipe Cements and Primers	11
8036S	32 oz.	Prime-Tite Blue Primer	12	083675080362	Plastic Pipe Cements and Primers	11
8046S	16 oz.	Prime-Tite Blue Primer	24	083675080461	Plastic Pipe Cements and Primers	11
8724	Gallon	Purple Primer	6	083675087248	Plastic Pipe Cements and Primers	11
8736S	32 oz.	Purple Primer	12	083675087361	Plastic Pipe Cements and Primers	11
8746S	16 oz.	Purple Primer	24	083675087460	Plastic Pipe Cements and Primers	11
8756S	8 oz.	Purple Primer	24	083675087569	Plastic Pipe Cements and Primers	11
8766S	4 oz.	Purple Primer	24	083675087668	Plastic Pipe Cements and Primers	11
8824	Gallon	Purple Primer/Cleaner	6	083675088245	Plastic Pipe Cements and Primers	12
8836S	32 oz.	Purple Primer/Cleaner	12	083675088368	Plastic Pipe Cements and Primers	12
8846S	16 oz.	Purple Primer/Cleaner	24	083675088467	Plastic Pipe Cements and Primers	12
8856S	8 oz.	Purple Primer/Cleaner	24	083675088566	Plastic Pipe Cements and Primers	12
8866S	4 oz.	Purple Primer/Cleaner	24	083675088665	Plastic Pipe Cements and Primers	12
9324	Gallon	Clear Primer – NSF Listed	6	083675093249	Plastic Pipe Cements and Primers	12
9336S	32 oz.	Clear Primer – NSF Listed	12	083675093362	Plastic Pipe Cements and Primers	12
9346S	16 oz.	Clear Primer – NSF Listed	24	083675093461	Plastic Pipe Cements and Primers	12
9356S	8 oz.	Clear Primer – NSF Listed	24	083675093560	Plastic Pipe Cements and Primers	12
9366S	4 oz.	Clear Primer – NSF Listed	24	083675093669	Plastic Pipe Cements and Primers	12
15050D	1/2" x 260"	Megatape Gray PTFE Tape, display box	120	032628150508	Thread Sealants and Leak Detectors	27
15100	1/2" x 1000"	Megatape Gray PTFE Tape, display box	63	032628151000	Thread Sealants and Leak Detectors	27
15110	3/4" x 1000"	Megatape Gray PTFE Tape, display box	45	032628151109	Thread Sealants and Leak Detectors	27
15120	1" x 1000"	Megatape Gray PTFE Tape, display box	36	032628151208	Thread Sealants and Leak Detectors	27
15802	1.1 fl oz.	Megaloc - Display, Plastic Tube	24	032628158023	Thread Sealants and Leak Detectors	27
15804	1/4 pt.	Megaloc - Screw Cap With Brush	24	032628158047	Thread Sealants and Leak Detectors	27
15806	1/2 pt.	Megaloc - Screw Cap With Brush	24	032628158061	Thread Sealants and Leak Detectors	27
15808	1 pt.	Megaloc - Screw Cap With Brush	12	032628158085	Thread Sealants and Leak Detectors	27
15811	1 qt.	Megaloc - Screw Cap With Brush	12	032628158115	Thread Sealants and Leak Detectors	27
15814	Gallon	Megaloc	4	032628158146	Thread Sealants and Leak Detectors	27
15816	5 gal.	Megaloc	1	032628158160	Thread Sealants and Leak Detectors	27
15818	55 gal.	Megaloc	1	032628158184	Thread Sealants and Leak Detectors	27
20973	1 lb.	97/3 Lead Free Wire Solder	25	038753209739	Copper Installation	29
22004	1/2 lb.	95/5 Wire Solder	10	038753220048	Copper Installation	29
22017	1 lb.	95/5 Wire Solder	25	038753220178	Copper Installation	29
22018	1 lb.	95/5 Wire Solder	10	038753220185	Copper Installation	29
24336S	32 oz.	Spa-Tite PVC Heavy Duty Clear	12	083675243324	Plastic Pipe Cements and Primers	5
24436S	32 oz.	Spa-Tite PVC Heavy Duty Blue	12	083675244320	Plastic Pipe Cements and Primers	5
25515	4 oz.	ProPoxy 20 - Display Pack (2 - 1 Oz.)	24	032628255159	Putty, Caulk and Sealants	34
25527	4 oz.	ProPoxy Triple Play Putty Display Pack	24	032628255272	Putty, Caulk and Sealants	34
25531	4 oz.	Plastic Poxy - Display Pack (2 - 1 Oz.)	24	032628255319	Putty, Caulk and Sealants	34
29031	1 oz.	95/5 Wire Solder	20	038753290317	Copper Installation	29
30011	1.7 oz.	No. 5 Flux	12	038753300115	Copper Installation	30
30013	4 oz.	No. 5 Flux	24	038753300139	Copper Installation	30
30014	8 oz.	No. 5 Flux	24	038753300146	Copper Installation	30
30041	16 oz.	No. 5 Flux	12	038753300412	Copper Installation	30
30062	16 oz.	No. 5 Paste Flux – Hot Weather	12	038753300627	Copper Installation	31
30106	4 oz.	No. 11 Liquid Flux	12	038753301068	Copper Installation	31
30130	1.7 oz.	H-20 ⁵ Water Soluble Paste Flux	12	038753301303	Copper Installation	30
30131	4 oz.	H-20 ⁵ Water Soluble Paste Flux	24	038753301310	Copper Installation	30
30132	8 oz.	H-20 ⁵ Water Soluble Paste Flux	24	038753301327	Copper Installation	30
30133	16 oz.	H-20 ⁵ Water Soluble Paste Flux	12	038753301334	Copper Installation	30
30140	1.7 oz.	H-20 ⁹⁵ Water Soluble Tinning Flux	12	038753301402	Copper Installation	30
30142	8 oz.	H-20 ⁹⁵ Water Soluble Tinning Flux	24	038753301426	Copper Installation	30
30143	16 oz.	H-20 ⁹⁵ Water Soluble Tinning Flux	12	038753301433	Copper Installation	30
30246	4 oz.	PVC Regular & NSF Purple Primer	12	038753302461	Plastic Pipe Cements and Primers	20
30246D	4 oz.	PVC Medium & NSF Purple Primer – Display Pack	24	038753302461	Plastic Pipe Cements and Primers	20
30343	32 oz.	EP13 Extra Heavy Duty Gray PVC Cement	12	038753303437	Plastic Pipe Cements and Primers	17
30344	Gallon	EP13 Extra Heavy Duty Gray PVC Cement	4	038753303444	Plastic Pipe Cements and Primers	17
30372	8 oz.	No. 95 Tinning Flux – Lead Free	24	038753303727	Copper Installation	30
30373	1.7 oz.	No. 95 Tinning Flux – Lead Free – Carded	12	038753303734	Copper Installation	30
30374	1.7 oz.	No. 95 Tinning Flux – Lead Free	12	038753303741	Copper Installation	30
30375	16 oz.	No. 95 Tinning Flux – Lead Free	12	038753303758	Copper Installation	30





NUMERICAL LISTING

NUMERICAL LISTING

Product Number	Size	Description	Ctn. Qty.	UPC	Category	Page Number
30710	1/2"	Acid Brush – Carded	12	038753307107	Copper Installation	31
30711	1/2"	Acid Brush – Bulk (per gross of 144)	1	038753307114	Copper Installation	31
30712	1/2"	Acid Brush – with Barcode	144	038753307121	Copper Installation	31
30750	4 oz.	Clear Primer	24	038753307503	Plastic Pipe Cements and Primers	21
30751	8 oz.	Clear Primer	24	038753307510	Plastic Pipe Cements and Primers	21
30752	16 oz.	Clear Primer	24	038753307527	Plastic Pipe Cements and Primers	21
30753	32 oz.	Clear Primer	12	038753307534	Plastic Pipe Cements and Primers	21
30754	Gallon	Clear Primer	6	038753307541	Plastic Pipe Cements and Primers	21
30755	4 oz.	Purple Primer	24	038753307558	Plastic Pipe Cements and Primers	21
30756	8 oz.	Purple Primer	24	038753307565	Plastic Pipe Cements and Primers	21
30757	16 oz.	Purple Primer	24	038753307572	Plastic Pipe Cements and Primers	21
30758	32 oz.	Purple Primer	12	038753307589	Plastic Pipe Cements and Primers	21
30759	Gallon	Purple Primer – Wide Mouth Can	6	038753307596	Plastic Pipe Cements and Primers	21
30766	Gallon	Cleaner – Wide Mouth Can	6	038753307664	Plastic Pipe Cements and Primers	22
30768	Gallon	Purple Primer/Cleaner	6	038753307688	Plastic Pipe Cements and Primers	22
30770	16 oz.	Purple Primer – Industrial Grade	24	038753307701	Plastic Pipe Cements and Primers	22
30771	32 oz.	Purple Primer – Industrial Grade	12	038753307718	Plastic Pipe Cements and Primers	22
30772	Gallon	Purple Primer – Industrial Grade	6	038753307725	Plastic Pipe Cements and Primers	22
30773	16 oz.	Clear Primer – Industrial Grade	24	038753307732	Plastic Pipe Cements and Primers	21
30774	32 oz.	Clear Primer – Industrial Grade	12	038753307749	Plastic Pipe Cements and Primers	21
30775	Gallon	Clear Primer – Industrial Grade	6	038753307756	Plastic Pipe Cements and Primers	21
30779	4 oz.	Cleaner	24	038753307794	Plastic Pipe Cements and Primers	22
30780	4 oz.	Purple Primer/Cleaner	24	038753307800	Plastic Pipe Cements and Primers	22
30782	8 oz.	Cleaner	24	038753307824	Plastic Pipe Cements and Primers	22
30783	8 oz.	Purple Primer/Cleaner	24	038753307831	Plastic Pipe Cements and Primers	22
30795	16 oz.	Cleaner	24	038753307954	Plastic Pipe Cements and Primers	22
30796	16 oz.	Purple Primer/Cleaner	24	038753307961	Plastic Pipe Cements and Primers	22
30805	32 oz.	Cleaner	12	038753308050	Plastic Pipe Cements and Primers	22
30806	32 oz.	Purple Primer/Cleaner	12	038753308067	Plastic Pipe Cements and Primers	22
30818	4 oz.	All Purpose	24	038753308180	Plastic Pipe Cements and Primers	15
30821	8 oz.	All Purpose	24	038753308210	Plastic Pipe Cements and Primers	15
30834	16 oz.	All Purpose	24	038753308340	Plastic Pipe Cements and Primers	15
30847	32 oz.	All Purpose	12	038753308470	Plastic Pipe Cements and Primers	15
30848	Gallon	All Purpose	6	038753308487	Plastic Pipe Cements and Primers	15
30850	4 oz.	PVC Heavy Duty Clear	24	038753308500	Plastic Pipe Cements and Primers	16
30863	8 oz.	PVC Heavy Duty Clear	24	038753308630	Plastic Pipe Cements and Primers	16
30875	4 oz.	PVC Flexible Clear	12	038753308753	Plastic Pipe Cements and Primers	14
30876	16 oz.	PVC Heavy Duty Clear	24	038753308760	Plastic Pipe Cements and Primers	16
30879	32 oz.	PVC Flexible Clear	12	038753308791	Plastic Pipe Cements and Primers	14
30883	4 oz.	PVC Medium Gray	24	038753308838	Plastic Pipe Cements and Primers	18
30884	8 oz.	PVC Medium Gray	24	038753308845	Plastic Pipe Cements and Primers	18
30885	16 oz.	PVC Medium Gray	24	038753308852	Plastic Pipe Cements and Primers	18
30886	32 oz.	PVC Medium Gray	12	038753308869	Plastic Pipe Cements and Primers	18
30887	Gallon	PVC Medium Gray	6	038753308876	Plastic Pipe Cements and Primers	18
30889	8 oz.	ABS Medium Black	24	038753308890	Plastic Pipe Cements and Primers	15
30890	4 oz.	PVC Rain-R-Shine Blue	24	038753308906	Plastic Pipe Cements and Primers	13
30891	8 oz.	PVC Rain-R-Shine Blue	24	038753308913	Plastic Pipe Cements and Primers	13
30892	16 oz.	ABS Medium Black	24	038753308920	Plastic Pipe Cements and Primers	15
30893	16 oz.	PVC Rain-R-Shine Blue	24	038753308937	Plastic Pipe Cements and Primers	13
30894	32 oz.	PVC Rain-R-Shine Blue	12	038753308944	Plastic Pipe Cements and Primers	13
30895	Gallon	PVC Rain-R-Shine Blue – Wide Mouth Can	6	038753308951	Plastic Pipe Cements and Primers	13
30900	4 oz.	ABS To PVC Transition Green	24	038753309002	Plastic Pipe Cements and Primers	15
30901	1 Gallon	Wide Mouth Can	6	038753309019	Plastic Pipe Cements and Primers	23
30902	32 oz.	ABS Medium Black	12	038753309026	Plastic Pipe Cements and Primers	15
30915	Gallon	ABS Medium Black	6	038753309156	Plastic Pipe Cements and Primers	15
30925	16 oz.	ABS To PVC Transition Green	6	038753309255	Plastic Pipe Cements and Primers	15
30926	32 oz.	ABS To PVC Transition Green	12	038753309262	Plastic Pipe Cements and Primers	15
30999	4 oz.	ABS Medium Black	24	038753309996	Plastic Pipe Cements and Primers	15
31008	32 oz.	PVC Heavy Duty Clear	12	038753310084	Plastic Pipe Cements and Primers	16
31011	Gallon	PVC Heavy Duty Clear - Wide Mouth Can	6	038753310114	Plastic Pipe Cements and Primers	16
31012	4 oz.	PVC Regular Clear	24	038753310121	Plastic Pipe Cements and Primers	18
31013	8 oz.	PVC Regular Clear	24	038753310138	Plastic Pipe Cements and Primers	18
31014	16 oz.	PVC Regular Clear	24	038753310145	Plastic Pipe Cements and Primers	18
31015	32 oz.	PVC Regular Clear	12	038753310152	Plastic Pipe Cements and Primers	18
31016	Gallon	PVC Regular Clear	6	038753310169	Plastic Pipe Cements and Primers	18
31017	4 oz.	PVC Medium Clear	24	038753310176	Plastic Pipe Cements and Primers	17
31018	8 oz.	PVC Medium Clear	24	038753310183	Plastic Pipe Cements and Primers	17
31019	16 oz.	PVC Medium Clear	24	038753310190	Plastic Pipe Cements and Primers	17



NUMERICAL LISTING



Product Number	Size	Description	Ctn. Qty.	UPC	Category	Page Number
31020	32 oz.	PVC Medium Clear	12	038753310206	Plastic Pipe Cements and Primers	17
31021	Gallon	PVC Medium Clear	6	038753310213	Plastic Pipe Cements and Primers	17
31082	16 oz.	CPVC Heavy Duty Orange	24	038753310824	Plastic Pipe Cements and Primers	20
31083	32 oz.	CPVC Heavy Duty Orange	12	038753310831	Plastic Pipe Cements and Primers	20
31084	Gallon	CPVC Heavy Duty Orange – Wide Mouth Can	6	038753310848	Plastic Pipe Cements and Primers	20
31093	4 oz.	PVC Heavy Duty Gray	24	038753310930	Plastic Pipe Cements and Primers	16
31094	8 oz.	PVC Heavy Duty Gray	24	038753310947	Plastic Pipe Cements and Primers	16
31095	16 oz.	PVC Heavy Duty Gray	24	038753310954	Plastic Pipe Cements and Primers	16
31105	32 oz.	PVC Heavy Duty Gray	12	038753311050	Plastic Pipe Cements and Primers	16
31118	Gallon	PVC Heavy Duty Gray - Wide Mouth Can	6	038753311180	Plastic Pipe Cements and Primers	16
31121	16 oz.	PVC Heavy Duty Gray Fast Set	24	038753311210	Plastic Pipe Cements and Primers	16
31122	32 oz.	PVC Heavy Duty Gray Fast Set	12	038753311227	Plastic Pipe Cements and Primers	16
31123	Gallon	PVC Heavy Duty Gray Fast Set - Wide Mouth Can	6	038753311234	Plastic Pipe Cements and Primers	16
31127	Gallon	CPVC Medium Orange	6	038753311272	Plastic Pipe Cements and Primers	20
31128	4 oz.	CPVC Medium Orange	24	038753311289	Plastic Pipe Cements and Primers	20
31129	8 oz.	CPVC Medium Orange	24	038753311296	Plastic Pipe Cements and Primers	20
31130	16 oz.	CPVC Medium Orange	24	038753311302	Plastic Pipe Cements and Primers	20
31131	32 oz.	CPVC Medium Orange	12	038753311319	Plastic Pipe Cements and Primers	20
31132	16 oz.	PVC All Weather Clear	24	038753311326	Plastic Pipe Cements and Primers	14
31133	32 oz.	PVC All Weather Clear	12	038753311333	Plastic Pipe Cements and Primers	14
31135	Gallon	PVC All Weather Clear – Wide Mouth Can	6	038753311357	Plastic Pipe Cements and Primers	14
31199	1/2" x 260"	PTFE White Thread Seal Tape	144	038753311999	Plastic Pipe Cements and Primers	26
31202	1/2" x 520"	PTFE White Thread Seal Tape	144	038753312026	Plastic Pipe Cements and Primers	26
31212	3/4" x 260"	PTFE White Thread Seal Tape	144	038753312125	Plastic Pipe Cements and Primers	26
31229	1 fl. oz.	Great White Pipe Joint Compound w/ PTFE	12	038753312293	Plastic Pipe Cements and Primers	26
31230	4 fl. oz.	Great White Pipe Joint Compound w/ PTFE	12	038753312309	Plastic Pipe Cements and Primers	26
31231	8 fl. oz.	Great White Pipe Joint Compound w/ PTFE	12	038753312316	Plastic Pipe Cements and Primers	26
31232	16 fl. oz.	Great White Pipe Joint Compound w/ PTFE	24	038753312323	Plastic Pipe Cements and Primers	26
31233	32 fl. oz.	Great White Pipe Joint Compound w/ PTFE	12	038753312330	Plastic Pipe Cements and Primers	26
31250	32 oz. can	Cement Carrier	12	038753312507	Plastic Pipe Cements and Primers	23
31257	16/32 oz.	Brush Top Dauber 1-1/2" Length	50	038753312576	Plastic Pipe Cements and Primers	23
31270	4 oz.	Fix-It Stick Epoxy Putty	12	038753312705	Putty, Caulk and Sealants	34
31275	12"	Gallon Can Roller Applicator – Fits Wide And Standard Mouth Size	12	038753312750	Plastic Pipe Cements and Primers	23
31276	12"	Gallon Can Swab Applicator – Fits Wide And Standard Mouth Size	12	038753312767	Plastic Pipe Cements and Primers	23
31299	4 oz.	Dauber Cap with Polyethylene Liner for PVC/CPVC Cement	12	038753312996	Plastic Pipe Cements and Primers	23
31300	1/2"	Adjustable Plastic Dauber w/ 1/2" Ball	100	038753313009	Plastic Pipe Cements and Primers	23
31301	1"	Adjustable Plastic Dauber w/ 1" Ball	100	038753313016	Plastic Pipe Cements and Primers	23
31302	1"	Adjustable Plastic Dauber w/ 1" Ball	50	038753313023	Plastic Pipe Cements and Primers	23
31304	4 oz.	Cement Can	24	038753313047	Plastic Pipe Cements and Primers	23
31305	8 oz.	Cement Can	24	038753313054	Plastic Pipe Cements and Primers	23
31306	16 oz.	Cement Can	24	038753313061	Plastic Pipe Cements and Primers	23
31307	32 oz.	Cement Can	12	038753313078	Plastic Pipe Cements and Primers	23
31309	8 oz.	Dauber Cap with Polyethylene Liner for PVC/CPVC Cement	12	038753313092	Plastic Pipe Cements and Primers	23
31310	16 oz.	Dauber Cap with Polyethylene Liner for PVC/CPVC Cement	12	038753313108	Plastic Pipe Cements and Primers	23
31312	32 oz.	Dauber Cap with Polyethylene Liner for PVC/CPVC Cement	12	038753313122	Plastic Pipe Cements and Primers	23
31313	16/32 oz.	Dauber For Cpvc Cement 3/4"	48	038753313139	Plastic Pipe Cements and Primers	23
31322	4 oz.	Dauber Cap with Polyethylene Liner for PVC/CPVC Cement	12	038753313221	Plastic Pipe Cements and Primers	23
31325	8 oz.	Dauber Cap with Polyethylene Liner for PVC/CPVC Cement	12	038753313252	Plastic Pipe Cements and Primers	23
31327	1/2"	ID Fitting Brush w/ Heavy Duty Handle	12	038753313276	Copper Installation	33
31328	3/4"	ID Fitting Brush w/ Heavy Duty Handle	12	038753313283	Copper Installation	33
31329	1"	ID Fitting Brush w/ Heavy Duty Handle	12	038753313290	Copper Installation	33
31330	1-1/4"	ID Fitting Brush w/ Heavy Duty Handle	12	038753313306	Copper Installation	33
31331	1-1/2"	ID Fitting Brush w/ Heavy Duty Handle	6	038753313313	Copper Installation	33
31332	2"	ID Fitting Brush w/ Heavy Duty Handle	6	038753313320	Copper Installation	33
31345	1/2"	O.D. tube brush	12	038753313450	Copper Installation	33
31346	3/4"	O.D. tube brush	12	038753313467	Copper Installation	33
31347	1"	O.D. tube brush	12	038753313474	Copper Installation	33
31348	1/2" & 3/4"	4-in-1 brush	12	038753313481	Copper Installation	33
31402D	1/2" x 260"	PTFE Pink Thread Seal Tape – Display	50	038753314020	Plastic Pipe Cements and Primers	26
31403	1/2" x 260"	PTFE Yellow Thread Seal Tape – Dispenser Pack	100	038753314037	Plastic Pipe Cements and Primers	26
31403D	1/2" x 260"	PTFE Yellow Thread Seal Tape – Display	20	038753314037	Plastic Pipe Cements and Primers	26
31404	1/2"	ID Fitting Brush w/ Heavy Duty Handle Carded	10	038753314044	Copper Installation	33
31405	3/4"	ID Fitting Brush w/ Heavy Duty Handle Carded	10	038753314051	Copper Installation	33
31406	1"	ID Fitting Brush w/ Heavy Duty Handle Carded	10	038753314068	Copper Installation	33
31407	1/2" & 3/4"	4-in-1 brush – Carded	10	038753314075	Copper Installation	33
31410		Specialty brushes – Carded	10	038753314105	Copper Installation	33
31412	1/2"	O.D. tube brush – Carded	10	038753314129	Copper Installation	33
31413	3/4"	O.D. tube brush – Carded	10	038753314136	Copper Installation	33

NUMERICAL LISTING





NUMERICAL LISTING

NUMERICAL LISTING

Product Number	Size	Description	Ctn. Qty.	UPC	Category	Page Number
31414	1"	O.D. tube brush – Carded	10	038753314143	Copper Installation	33
31910	4 oz.	CPVC Flowguard Gold 1-Step Yellow	24	038753319100	Plastic Pipe Cements and Primers	19
31911	8 oz.	CPVC Flowguard Gold 1-Step Yellow	24	038753319117	Plastic Pipe Cements and Primers	19
31912	16 oz.	CPVC Flowguard Gold 1-Step Yellow	24	038753319124	Plastic Pipe Cements and Primers	19
31913	32 oz.	CPVC Flowguard Gold 1-Step Yellow	12	038753319131	Plastic Pipe Cements and Primers	19
31914	Gallon	CPVC Flowguard Gold 1-Step Yellow	6	038753319148	Plastic Pipe Cements and Primers	19
31917	8 oz.	1-Step CPVC Flowguard Gold with UV Indicator	24	038753319179	Plastic Pipe Cements and Primers	19
31918	16 oz.	1-Step CPVC Flowguard Gold with UV Indicator	24	038753319186	Plastic Pipe Cements and Primers	19
31919	32 oz.	1-Step CPVC Flowguard Gold with UV Indicator	24	038753319193	Plastic Pipe Cements and Primers	19
31925	4 oz.	PVC Regular Clear Advanced	24	038753319254	Plastic Pipe Cements and Primers	18
31926	8 oz.	PVC Regular Clear Advanced	24	038753319261	Plastic Pipe Cements and Primers	18
31927	16 oz.	PVC Regular Clear Advanced	24	038753319278	Plastic Pipe Cements and Primers	18
31928	32 oz.	PVC Regular Clear Advanced	12	038753319285	Plastic Pipe Cements and Primers	18
31929	Gallon	PVC Regular Clear Advanced - Wide Mouth Can	6	038753319292	Plastic Pipe Cements and Primers	18
31936	8 oz.	PVC Hot Weather Plus Medium Clear	24	038753319360	Plastic Pipe Cements and Primers	14
31937	16 oz.	PVC Hot Weather Plus Medium Clear	24	038753319377	Plastic Pipe Cements and Primers	14
31938	32 oz.	PVC Hot Weather Plus Medium Clear	12	038753319384	Plastic Pipe Cements and Primers	14
32160	4 oz.	PVC Blue Lava Hot Cement	24	038753321608	Plastic Pipe Cements and Primers	13
32161	8 oz.	PVC Blue Lava Hot Cement	24	038753321615	Plastic Pipe Cements and Primers	13
32162	16 oz.	PVC Blue Lava Hot Cement	24	038753321622	Plastic Pipe Cements and Primers	13
32163	32 oz.	PVC Blue Lava Hot Cement	12	038753321639	Plastic Pipe Cements and Primers	13
32164	Gallon	PVC Blue Lava Hot Cement	6	038753321646	Plastic Pipe Cements and Primers	13
32166	8 oz.	Orange Lava CPVC Cut-In Cement	24	038753321660	Plastic Pipe Cements and Primers	13
32167	16 oz.	Orange Lava CPVC Cut-In Cement	24	038753321677	Plastic Pipe Cements and Primers	13
32168	32 oz.	Orange Lava CPVC Cut-In Cement	12	038753321684	Plastic Pipe Cements and Primers	13
32262	8 oz.	Heavy Duty Medium Set Gray	24	038753322629	Plastic Pipe Cements and Primers	17
32263	16 oz.	Heavy Duty Medium Set Gray	24	038753322636	Plastic Pipe Cements and Primers	17
32264	32 oz.	Heavy Duty Medium Set Gray	12	038753322643	Plastic Pipe Cements and Primers	17
33730	3/4" x 10'	24 Ga. Galvanized Steel Hanger Strap – Bagged	12 pcs	038753337302	Pipe Support	39
33889	3/4" x 100'	28 Ga. Galvanized Steel Hanger Strap – Boxed	10 pcs	038753338897	Pipe Support	39
33918	3/4" x 10'	24 Ga. Copper-Plated Steel Hanger Strap – Bagged	12 pcs	038753339184	Pipe Support	39
33922	3/4" x 50'	28 Ga. Galvanized Steel Hanger Strap – Bulk	10 pcs	038753339221	Pipe Support	39
33923	3/4" x 10'	28 Ga. Galvanized Steel Hanger Strap – Bagged	12 pcs	038753339238	Pipe Support	39
33925	3/4" x 25'	Plastic Hanger Strap – Bagged	20 pcs	038753339252	Pipe Support	39
33926	3/4" x 50'	Plastic Hanger Strap – Bagged	20 pcs	038753339269	Pipe Support	39
33927	3/4" x 100'	Plastic Hanger Strap – Bagged	20 pcs	038753339276	Pipe Support	39
33928	3/4" x 10'	Plastic Hanger Strap – Bagged	12 pcs	038753339283	Pipe Support	39
33929	3/4" x 25'	28 Ga. Galvanized Steel Hanger Strap – Bagged	12 pcs	038753339290	Pipe Support	39
33989	3/4" x 10'	Galvanized Tab Tape – 28 Ga. – Bagged	12 pcs	038753339894	Pipe Support	39
33992	1-1/2" x 50'	Galvanized Tab Tape – 26 Ga. – Boxed	5 pcs	038753339924	Pipe Support	39
35253	Gallon	Cryo-Tek Original	6	032628352537	Heating, Chemical and Anti-Freeze	37
35260	5 gal.	Cryo-Tek Original	1	032628352605	Heating, Chemical and Anti-Freeze	37
35267	55 gal.	Cryo-Tek Original	1	032628352674	Heating, Chemical and Anti-Freeze	37
35281	Gallon	Cryo-Tek-100	6	032628352810	Heating, Chemical and Anti-Freeze	37
35282	Gallon	Cryo-Tek AG	6	032628352827	Heating, Chemical and Anti-Freeze	37
35283	5 gal.	Orange Container – Cryo-Tek-100 A ₁	1	032628352834	Heating, Chemical and Anti-Freeze	37
35284	5 gal.	Cryo-Tek-100	1	032628352841	Heating, Chemical and Anti-Freeze	37
35285	5 gal.	Cryo-Tek AG	1	032628352858	Heating, Chemical and Anti-Freeze	37
35286	30 gal.	Cryo-Tek-100	1	032628352865	Heating, Chemical and Anti-Freeze	37
35287	55 gal.	Cryo-Tek-100	1	032628352872	Heating, Chemical and Anti-Freeze	37
35288	30 gal.	Cryo-Tek AG	1	032628352889	Heating, Chemical and Anti-Freeze	37
35289	55 gal.	Cryo-Tek AG	1	032628352896	Heating, Chemical and Anti-Freeze	37
35291	55 gal.	Drum – Cryo-Tek-100 A ₁	1	032628352919	Heating, Chemical and Anti-Freeze	37
35330	Gallon	Universal Cryo-Tek	6	032628353305	Heating, Chemical and Anti-Freeze	38
35331	5 gal.	Universal Cryo-Tek	1	032628353312	Heating, Chemical and Anti-Freeze	38
35332	55 gal.	Universal Cryo-Tek	1	032628353329	Heating, Chemical and Anti-Freeze	38
35340	Gallon	Cryo-Tek Food Grade	6	032628353404	Heating, Chemical and Anti-Freeze	38
35341	5 gal.	Cryo-Tek Food Grade	1	032628353411	Heating, Chemical and Anti-Freeze	38
35342	55 gal.	Cryo-Tek Food Grade	1	032628353428	Heating, Chemical and Anti-Freeze	38
40110	1 pt.	Cutting Oil - Clear	12	032628401105	Oils, Lubricants and Hand Cleaners	36
40115	1 qt.	Cutting Oil - Clear	12	032628401150	Oils, Lubricants and Hand Cleaners	36
40120	Gallon	Cutting Oil - Clear	6	032628401204	Oils, Lubricants and Hand Cleaners	36
40125	5 gal.	Cutting Oil - Clear	1	032628401259	Oils, Lubricants and Hand Cleaners	36
40210	1 pt.	Cutting Oil - Dark	12	032628402102	Oils, Lubricants and Hand Cleaners	36
40215	1 qt.	Cutting Oil - Dark	12	032628402157	Oils, Lubricants and Hand Cleaners	36
40220	Gallon	Cutting Oil - Dark	6	032628402201	Oils, Lubricants and Hand Cleaners	36
40225	5 gal.	Cutting Oil - Dark	1	032628402256	Oils, Lubricants and Hand Cleaners	36
40240	55 gal.	Cutting Oil - Dark	1	032628402409	Oils, Lubricants and Hand Cleaners	36





Product Number	Size	Description	Ctn. Qty.	UPC	Category	Page Number
40501	2 lb.	Duck Butter	12	032628405011	Oils, Lubricants and Hand Cleaners	36
40506	8 lb.	Duck Butter	4	032628405066	Oils, Lubricants and Hand Cleaners	36
42235	2" or 3"	PVC drain w/ round stainless steel Screw-Tite strainer	20	038753422350	Drains	40
42236	2" or 3"	ABS drain w/ round stainless steel Screw-Tite strainer	20	038753422367	Drains	40
42380	2" or 3"	PVC drain w/ round brass cast grate w/ round ring	6	038753423807	Drains	40
42381	2" or 3"	ABS drain w/ round brass cast grate w/ round ring	6	038753423814	Drains	40
42384	2" or 3"	PVC round nickel cast grate w/ round ring	6	038753423845	Drains	40
42385	2" or 3"	ABS round nickel cast grate w/ round ring	6	038753423852	Drains	40
42386	2" or 3"	PVC round nickel cast grate w/ square ring	6	038753423869	Drains	40
42387	2" or 3"	ABS round nickel cast grate w/ square ring	6	038753423876	Drains	40
42388	2" or 3"	PVC drain w/ square stainless steel Snap-Tite strainer	20	038753423883	Drains	40
42389	2" or 3"	ABS drain w/ square stainless steel Snap-Tite strainer	20	038753423890	Drains	40
42785	3" or 4"	ABS Snap-In Cleanout Assembly	12	038753427850	Drains	43
42786	3" or 4"	PVC Snap-In Cleanout Assembly	12	038753427867	Drains	43
43596	2" or 3"	Four-Way Area Drain, PVC	10	038753435961	Drains	43
43710	2" or 3"	ABS Snap-In Cleanout Assembly	12	038753437101	Drains	43
43711	2" or 3"	PVC Snap-In Cleanout Assembly	12	038753437118	Drains	43
43730	3"	ABS Snap-In Cleanout Assembly	12	038753437309	Drains	43
43731	3"	PVC Snap-In Cleanout Assembly	12	038753437316	Drains	43
43732	4"	ABS Snap-In Cleanout Assembly	12	038753437323	Drains	43
43733	4"	PVC Snap-In Cleanout Assembly	12	038753437330	Drains	43
43764	2-1/3"	ABS Replacement Plug for the 3" and the 2" or 3" cleanout assemblies	6	038753437644	Drains	43
43765	2-1/3"	PVC Replacement Plug for the 3" and the 2" or 3" cleanout assemblies	6	038753437651	Drains	43
43766	3-1/2"	ABS Replacement Plug for the 4" regular and the 3" Hub cleanout assemblies	6	038753437668	Drains	43
43767	3-1/2"	PVC Replacement Plug for the 4" regular and the 3" Hub cleanout assemblies	6	038753437675	Drains	43
45011	1.5" x 5 yds.	Hercules Waterproof Abrasive Open Mesh Dispenser Box	24	032628450110	Copper Installation	32
45013	1.5" x 10 yds.	Hercules Waterproof Abrasive Open Mesh Dispenser Box	24	032628450134	Copper Installation	32
45025	1.5" x 10 yds.	Hercules Waterproof Abrasive Sandcloth Dispenser Box	24	032628450257	Copper Installation	32
45030	1.5" x 25 yds.	Hercules Waterproof Abrasive Sandcloth Dispenser Box	12	032628450301	Copper Installation	32
45314	16 oz.	Hercules For Hands - Lemon Lotion Hand Cleaner -	12	032628453142	Oils, Lubricants and Hand Cleaners	35
45325	16 oz.	Hercules For Hands - Pumice Lotion Hand Cleaner -	12	032628453258	Oils, Lubricants and Hand Cleaners	35
45333	12" x 10"	Hercules For Hands - Pre-Moistened Towels -	6	032628453333	Oils, Lubricants and Hand Cleaners	35
45333T	12" x 10"	Hercules For Hands - Pre-Moistened Towels -	30	032628453333	Oils, Lubricants and Hand Cleaners	35
45337	12" x 10"	Hercules For Hands - Pre-Moistened Towels -	6	032628453371	Oils, Lubricants and Hand Cleaners	35
45801	8 oz.	Megabubble Leak Detector - With Dauber	24	032628458017	Thread Sealants and Leak Detectors	28
45802	32 oz.	Megabubble Leak Detector - With Sprayer	12	032628458024	Thread Sealants and Leak Detectors	28
45803	Gallon	Megabubble Leak Detector - Refill Container	4	032628458031	Thread Sealants and Leak Detectors	28
45804	16 oz.	Megabubble Leak Detector - With Sprayer - Display Pack	12	032628458048	Thread Sealants and Leak Detectors	28
53017	1.7 oz.	No. 5 Flux w/ Brush – Carded	12	038753530178	Copper Installation	30
53026	1 oz.	95/5 Wire Solder	12	038753530260	Copper Installation	29
53027	1/4 lb.	95/5 Wire Solder	12	038753530277	Copper Installation	29
53067	1.7 oz.	H-205 Water Soluble Paste Flux – Carded	12	038753530673	Copper Installation	30
53068	1.7 oz.	H-2095 Water Soluble Tinning Flux – Carded	12	038753530680	Copper Installation	30
53181	1 oz.	95/5 Wire Solder*	12	038753531816	Copper Installation	29
53200	1.7 oz.	No. 5 Flux w/ Brush – Carded*	12	038753532004	Copper Installation	30
53201	1.7 oz.	No. 95 Tinning Flux – Lead Free – Carded*	12	038753532011	Copper Installation	30
76012	2 In.	PVC Commercial Drain W/Plastic Grate & Bucket	1	038753760124	Drains	40
76013	3 In.	PVC Commercial Drain W/Plastic Grate & Bucket	1	038753760131	Drains	40
76014	4 In.	PVC Commercial Drain W/Plastic Grate & Bucket	1	038753760148	Drains	40
76016	6 In.	PVC Commercial Drain W/Plastic Grate & Bucket	1	038753760162	Drains	40
76022	2 In.	PVC Drain W/Plastic Grate & W/O Bucket	1	038753760223	Drains	40
76023	3 In.	PVC Drain W/Plastic Grate & W/O Bucket	1	038753760230	Drains	40
76024	4 In.	PVC Drain W/Plastic Grate & W/O Bucket	1	038753760247	Drains	40
76026	6 In.	PVC Drain W/Plastic Grate & W/O Bucket	1	038753760261	Drains	40
76032	2 In.	PVC Commercial Drain W/Cast Iron Grate & Bucket	1	038753760322	Drains	40
76033	3 In.	PVC Commercial Drain W/Cast Iron Grate & Bucket	1	038753760339	Drains	40
76034	4 In.	PVC Commercial Drain W/Cast Iron Grate & Bucket	1	038753760346	Drains	40
76036	6 In.	PVC Commercial Drain W/Cast Iron Grate & Bucket	1	038753760360	Drains	40
76042	2 In.	PVC Drain W/Cast Iron Grate & W/O Bucket	1	038753760421	Drains	40
76043	3 In.	PVC Drain W/Cast Iron Grate & W/O Bucket	1	038753760438	Drains	40
76044	4 In.	PVC Drain W/Cast Iron Grate & W/O Bucket	1	038753760445	Drains	40
76046	6 In.	PVC Drain W/Cast Iron Grate & W/O Bucket	1	038753760469	Drains	40
86012	2 In.	ABS Sediment Drain, Plastic Grate W/Bucket	1	038753860121	Drains	40
86013	3 In.	ABS Sediment Drain, Plastic Grate W/Bucket	1	038753860138	Drains	40
86014	4 In.	ABS Sediment Drain, Plastic Grate W/Bucket	1	038753860145	Drains	40
86016	6 In.	ABS Sediment Drain, Plastic Grate W/Bucket	1	038753860169	Drains	40
86022	2 In.	ABS Sediment Drain, Plastic Grate W/O Bucket	1	038753860220	Drains	40
86023	3 In.	ABS Sediment Drain, Plastic Grate W/O Bucket	1	038753860237	Drains	40

NUMERICAL LISTING





NUMERICAL LISTING

NUMERICAL LISTING

Product Number	Size	Description	Ctn. Qty.	UPC	Category	Page Number
86024		4 In. ABS Sediment Drain, Plastic Grate W/O Bucket	1	038753860244	Drains	40
86026		6 In. ABS Sediment Drain, Plastic Grate W/O Bucket	1	038753860268	Drains	40
86032		2 In. ABS Sediment Drain, Cast Iron Grate W/Bucket	1	038753860329	Drains	40
86033		3 In. ABS Sediment Drain, Cast Iron Grate W/Bucket	1	038753860336	Drains	40
86034		4 In. ABS Sediment Drain, Cast Iron Grate W/Bucket	1	038753860343	Drains	40
86036		6 In. ABS Sediment Drain, Cast Iron Grate W/Bucket	1	038753860367	Drains	40
86042		2 In. ABS Sediment Drain, Cast Iron Grate W/O Bucket	1	038753860428	Drains	40
86043		3 In. ABS Sediment Drain, Cast Iron Grate W/O Bucket	1	038753860435	Drains	40
86044		4 In. ABS Sediment Drain, Cast Iron Grate W/O Bucket	1	038753860442	Drains	40
86046		6 In. ABS Sediment Drain, Cast Iron Grate W/O Bucket	1	038753860466	Drains	40
014398	2" x 60 YD	Duct Tape – Silver	24	078864143980	Putty, Caulk and Sealants	34
014390	2" x 60 YD	Duct Tape – Black	24	078864143904	Putty, Caulk and Sealants	34
302483	8 oz.	PVC Regular & NSF Purple Primer – Display Pack	20	038753302485	Plastic Pipe Cements and Primers	20
307573	16 oz.	Purple Primer – Display Pack	10	038753307572	Plastic Pipe Cements and Primers	21
307583	32 oz.	Purple Primer – Display Pack	6	038753307589	Plastic Pipe Cements and Primers	21
307823	8 oz.	Cleaner – Display Pack	36	038753307824	Plastic Pipe Cements and Primers	22
307953	16 oz.	Cleaner – Display Pack	10	038753307954	Plastic Pipe Cements and Primers	22
308213	8 oz.	All Purpose – Display Pack	36	038753308210	Plastic Pipe Cements and Primers	15
308633	8 oz.	PVC Heavy Duty Clear - Display Pack	36	038753308630	Plastic Pipe Cements and Primers	16
308763	16 oz.	PVC Heavy Duty Clear - Display Pack	10	038753308760	Plastic Pipe Cements and Primers	16
308893	8 oz.	ABS Medium Black – Display Pack	36	038753308890	Plastic Pipe Cements and Primers	15
308913	8 oz.	PVC Rain-R-Shine Blue – Display Pack	36	038753308913	Plastic Pipe Cements and Primers	13
308923	16 oz.	ABS Medium Black – Display Pack	10	038753308920	Plastic Pipe Cements and Primers	15
308933	16 oz.	PVC Rain-R-Shine Blue – Display Pack	10	038753308937	Plastic Pipe Cements and Primers	13
309003	4 oz.	ABS To PVC Transition Green – Display Pack	12	038753309002	Plastic Pipe Cements and Primers	15
309023	32 oz.	ABS Medium Black – Display Pack	6	038753309026	Plastic Pipe Cements and Primers	15
309993	4 oz.	ABS Medium Black – Display Pack	48	038753309996	Plastic Pipe Cements and Primers	15
310083	32 oz.	PVC Heavy Duty Clear - Display Pack	6	038753310084	Plastic Pipe Cements and Primers	16
310133	8 oz.	PVC Regular Clear – Display Pack	36	038753310138	Plastic Pipe Cements and Primers	18
310143	16 oz.	PVC Regular Clear – Display Pack	10	038753310145	Plastic Pipe Cements and Primers	18
310153	32 oz.	PVC Regular Clear – Display Pack	6	038753310152	Plastic Pipe Cements and Primers	18
310173	4 oz.	PVC Medium Clear - Display Pack	72	038753310176	Plastic Pipe Cements and Primers	17
311213	16 oz.	PVC Heavy Duty Gray Fast Set - Display Pack	10	038753311210	Plastic Pipe Cements and Primers	16
311293	8 oz.	CPVC Medium Orange – Display Pack	36	038753311296	Plastic Pipe Cements and Primers	20
319113	8 oz.	CPVC Flowguard Gold 1-Step Yellow – Display Pack	40	038753319117	Plastic Pipe Cements and Primers	19
3191033	4 oz.	CPVC Flowguard Gold 1-Step Yellow – Display Pack	24	038753319100	Plastic Pipe Cements and Primers	19
TP007		Tamper Proof Stainless Steel Machine Screws W/Driver	1	038753901275	Drains	42
TP009	5"	Sediment Strainer	1	038753901251	Drains	42
TP232N	5"	Round w/Ring – Over 2" / Inside 3" Pipe Fit	1	038753901633	Drains	42
TP235N	5"	Square w/Ring – Over 2" / Inside 3" Pipe Fit	1	038753902647	Drains	42
TP312N	5"	Round w/Ring – Over 3" / Inside 4" Pipe Fit	1	038753900322	Drains	42
TP315N	5"	Square w/Ring – Over 3" / Inside 4" Pipe Fit	1	038753903668	Drains	42
TP322N	5"	Round w/Ring – Over 3" / Inside 4" Pipe Fit	1	038753904054	Drains	42
TP332N	5"	Round w/Ring – Over 3" / Inside 4" Pipe Fit	1	038753902012	Drains	42
TP334N	6"	Round w/Ring – Over 3" / Inside 4" Pipe Fit	1	038753902043	Drains	42
TP335N	5"	Square w/Ring – Over 3" / Inside 4" Pipe Fit	1	038753902760	Drains	42
TP336N	6"	Square w/Ring – Over 3" / Inside 4" Pipe Fit	1	038753902791	Drains	42
TP342N	5"	Round w/Ring – Over 3" / Inside 4" Pipe Fit	1	038753902852	Drains	42
TP344N	6"	Round w/Ring – Over 3" / Inside 4" Pipe Fit	1	038753901985	Drains	42
TP414N	6"	Round w/Ring – Over 4" Pipe Fit	1	038753900452	Drains	42
TP416N	6"	Square w/Ring – Over 4" Pipe Fit	1	038753903750	Drains	42
TP424N	6"	Round w/Ring – Over 4" Pipe Fit	1	038753901053	Drains	42
TP432N	5"	Round w/Ring – Over 4" Pipe Fit	1	038753902517	Drains	42
TP434N	6"	Round w/Ring – Over 4" Pipe Fit	1	038753902586	Drains	42
TP435N	5"	Square w/Ring – Over 4" Pipe Fit	1	038753902883	Drains	42
TP436N	6"	Square w/Ring – Over 4" Pipe Fit	1	038753902913	Drains	42
TP442N	5"	Round w/Ring – Over 4" Pipe Fit	1	038753902975	Drains	42
TP444N	6"	Round w/Ring – Over 4" Pipe Fit	1	038753902456	Drains	42
TP5KIT	5"	PVC Leveling Kit	1	038753901220	Drains	42
TP6KIT	6"	PVC Leveling Kit	1	038753901244	Drains	42





A series of horizontal lines for taking notes, spanning the width of the page below the header.



The Oatey® Network

Through seven manufacturing and distribution facilities located throughout North America and China, Oatey designs, manufactures and sources over 10,000 plumbing related products. Nearly 80% of our products are manufactured in the United States, and distributed in more than 70 countries worldwide.



For Assistance & Ordering Contact: SpecialtySales@oatey.com

20600 Emerald Pkwy. | Cleveland, OH 44135
216.267.7100 / 800.321.9532
Fax: 216.267.9845 / 800.321.9535
oatey.com

© 2016 Oatey. All Rights Reserved.
® Oatey is a registered trademark of Oatey Co.
This information is based on data believed to be reliable but Oatey makes no warranties, express or implied, as to its accuracy and assumes no liability arising out of its use. The data listed falls within the normal range of product properties but should not be used to establish specification limits or used alone as the basis of design. Oatey's liability to purchasers is expressly limited to the terms and conditions of sale.
LCS 1017