

Slant/Fin **SENTINEL**™

High performance, cast-iron gas boiler
with **Lifetime Limited Warranty**



**RELIABLE, ECONOMICAL
HOME HEATING.**

The smarter choice for informed homeowners.

Enjoy home heating comfort with the extra confidence that an advanced design Sentinel boiler provides. The Sentinel boiler combines the reliability of natural draft and cast-iron construction with the high efficiency performance provided by the Slant/Fin S-Series heat exchanger. A new Sentinel boiler can save 30% or more on fuel bills compared to a typical old boiler operating at 60% efficiency.

Reliable natural draft design

When the Sentinel boiler is operating, combustion air enters the boiler and exhaust is expelled up the chimney by natural draft. No mechanical combustion aids are required for the boiler to attain its high efficiency.

High performance heating

The Sentinel boiler's S-Series heat exchanger is made of quality cast-iron and assembled with durable metal push nipples. Specially shaped thermal pins promote efficient heat transfer. The boiler heats quickly, sending warmth to radiators throughout your home within moments of your thermostat's call for heat. The Sentinel boiler is so reliable it comes with a lifetime limited warranty.

Intermittent ignition or standing pilot models

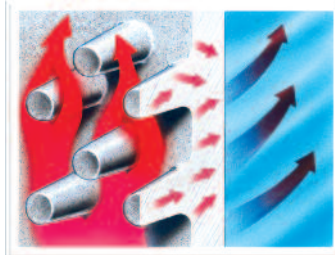
With a choice of intermittent pilot ignition or standing pilot, Sentinel's AFUE's range from 81.5% to 82.3%.

- **AGA input: 70,000 to 210,000 Btu/hr**
- **Standing pilot or intermittent ignition**
- **Saves energy. A.F.U.E. to 82.3%**

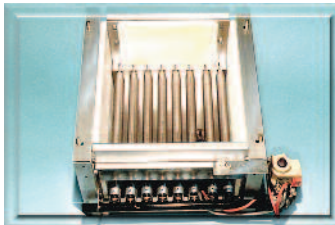


Computer-aided design. Highest quality manufacturing. Superior components.

Advanced design S-Series heat exchanger maximizes transfer of heat from the gas flame to the boiler water which then flows into your heating system. Superior heat transfer properties permit use of smaller, compact cast-iron heat exchanger sections. The flue passage design, thermal pin pattern and consistent wall thickness ensure uniform heat transfer with less thermal strain and metal fatigue.



Insulated base is constructed of heavy gauge aluminized steel. Thick refractory insulation surrounds combustion chamber, minimizing standby losses and increasing efficiency.



Metal push nipples expand and contract with the individual boiler sections that they connect. In many ordinary boilers, flimsy rubber or plastic gaskets are substituted for metal push nipples and are subject to deterioration and leaks.



Long-life burners.

Quiet, light and easy to install or remove. Stainless steel burners for natural or propane gas last longer. Special port construction will not permit flame to "lift" or flash back. Input per burner is 17,500 Btu/hr.



Slant/Fin[®] SENTINEL™

High performance, cast-iron gas boiler

*A new advanced design
Sentinel boiler will provide
years of reliable, economical
home heating comfort.*

Motorized heavy-duty vent damper

increases efficiency of the boiler by reducing standby losses. Motor closes the chimney vent when the burner is off, fully opens it in anticipation of combustion.

Draft hood

Heavy-duty insulated jacket

Relief valve

Cast-iron heat exchanger

Brand name controls

Pressure & temperature gauge

Thermal pins

Circulator

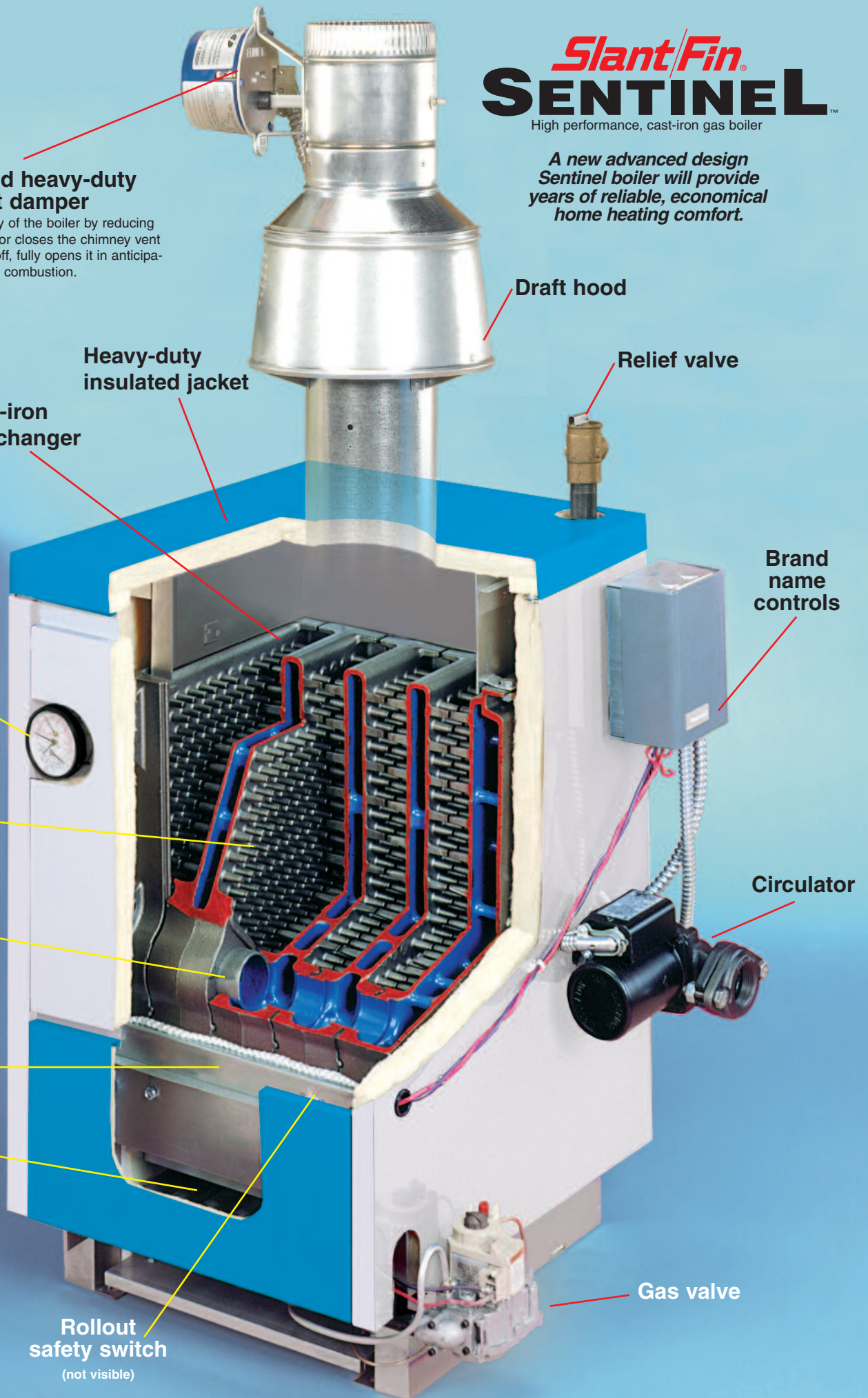
Metal push nipples

Insulated base

Stainless Steel Burners

Gas valve

Rollout safety switch
(not visible)



Slant/Fin

SENTINEL™

High performance, cast-iron gas boiler

With five models ranging in size from 70,000 to 210,000 Btuh, Sentinel boilers meet a wide range of residential and light commercial heating requirements. All models are available for use with natural gas or L.P. gas.

Sentinel boilers are “installer-friendly”, with features to make the contractor’s installation and set up quicker and easier. All Slant/Fin boilers, for instance, are packaged in quick release

shipping crates to speed up unpacking. Boilers are factory-wired with quick connect harnesses for the vent damper and blocked vent safety switch. Controls are all mounted on the outside of the boiler for easy access and quick wiring. The boiler height, including draft diverter, is up to a foot and a half lower than many natural draft boilers. (For lower profile boilers with integral draft hoods, refer to the Slant/Fin Sentry models).

RATINGS FOR SENTINEL BOILERS--NATURAL AND L.P. GAS

MODEL NUMBER †	A.G.A. INPUT (Btuh)	D.O.E. CAPACITY (Btuh)	NET I=B=R RATING WATER (Btuh) *	WATER (Sq.Ft.)	EFFICIENCY (A.F.U.E.)		DIMENSIONS			
					STANDING PILOT	INTERMITTENT IGNITION	A	B	C	D
SE-70	70,000	58,000	50,000	333	81.5	82.0	11½"	17½"	4"	45½"
SE-105	105,000	87,000	76,000	507	81.6	82.1	14½"	20½"	5"	46¾"
SE-140	140,000	116,000	101,000	673	81.7	82.2	17½"	23½"	5"	46¾"
SE-175	175,000	145,000	126,000	840	81.7	82.2	20½"	26½"	6"	47"
SE-210	210,000	173,000	150,000	1000	81.8	82.3	23½"	29½"	7"	48¾"

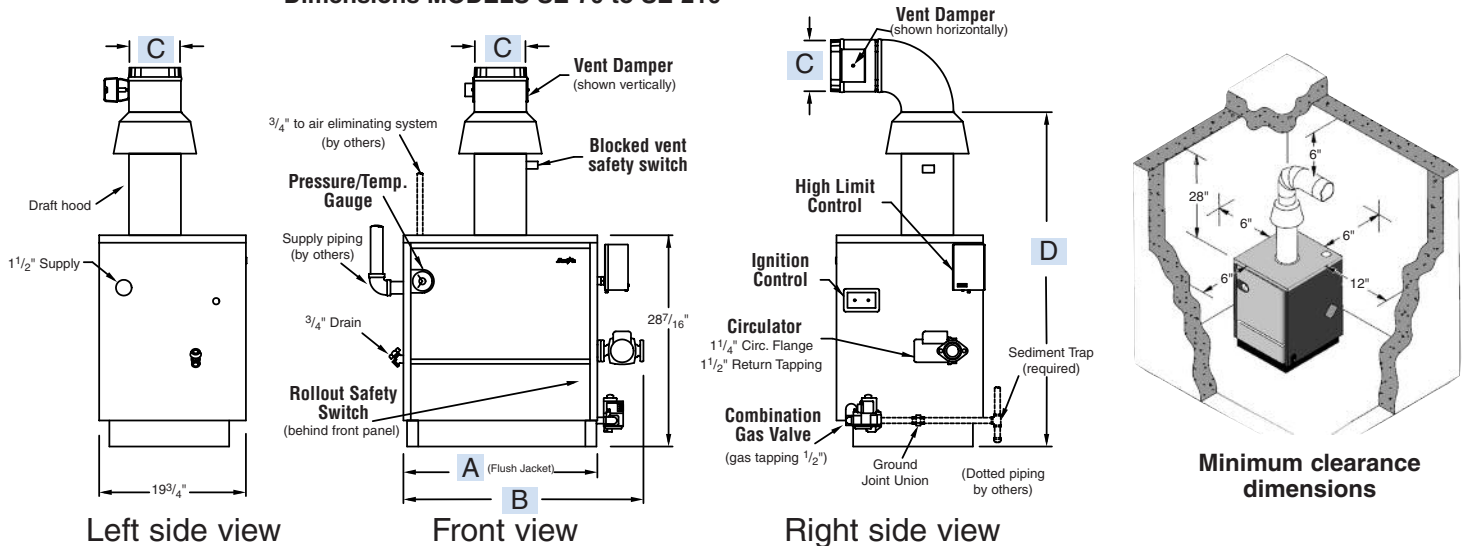


* Net ratings are based on a piping and pick-up allowance of 1.15. Slant/Fin should be consulted before selecting a boiler for installation having unusual piping and pick-up requirements. Ratings must be reduced by 4% at 2,000 feet elevation and an additional 4% for every additional 1,000 feet elevation over 2,000 feet.

† Type of gas: after model number, specify gas by name “Natural” or “Propane”.

Note: All Sentinel boilers are tested and rated for capacity under the U.S. Dept. of Energy (D.O.E.) Test Procedure for boilers.

Dimensions MODELS SE-70 to SE-210



* Vent damper may be installed horizontally on all models with use of a common vent elbow.



SLANT/FIN CORPORATION, Greenvale, N.Y. 11548 • Phone: (516) 484-2600
 FAX: (516) 484-5921 • In Canada: Slant/Fin LTD/LTEE, Mississauga, Ontario
www.slantfin.com

©Slant/Fin Corp. 2010. Printed in the U.S.A. 1110. Publication No. SE-10.