

# COPPER-PLATED STUB OUT BRACKET

## 521 SERIES

### SPECIFICATION

Sioux Chief's copper-plated stub out bracket shall be used where necessary to support 1/2", 3/4" or 1" nominal copper stub outs for water supply lines. Holes for positioning copper tube shall be located on 2-inch or 4-inch center lines depending on model number.

Bracket shall be produced from cold-roll steel, copper-plated and include a protective water-based clear coat finish to minimize surface rust when arriving at jobsite. Depending on model number, bracket may feature extruded holes, providing a wider soldering surface. Bracket may also feature rolled edges to provide additional strength. Bracket shall be IAPMO listed.

### INSTALLATION

Using approved hardware, secure bracket with nail or screw to stud through pilot hole. Insert copper stub out into pipe hole. Apply flux and solder copper making sure to heat the tube, not the bracket. Excessive heat applied directly to bracket could result in burning off the plated finish.

### MAXIMUM LOAD RATING

25 lbs.

### DIMENSIONS

	521-118	521-118R	521-126	521-810	521-820
A: length	20"	20"	26"	20"	20"
B: height	1 1/4"	1 1/4"	1 1/4"	1 3/4"	1 3/4"
C: gauge	16	16	16	16	24
D: nail hole diameter	.187"	.187"	.187"	.187"	.187"
E: pipe hole (O.D.)	.631"	.631"	.631"	.631" (for 1/2" tube) .881" (for 3/4" tube) 1.13" (for 1" tube)	.631" (for 1/2" tube) .881" (for 3/4" tube) 1.13" (for 1" tube)
F: number of pipe holes with center-lines	8 (2" o.c.)	7 (2" o.c.)	11 (2" o.c.)	7 - (1/2" tube) 2" o.c. 4 - (3/4" tube) 4" o.c. 4 - (1" tube) 4" o.c.	7 - (1/2" tube) 2" o.c. 4 - (3/4" tube) 4" o.c. 3 - (1" tube) 4" o.c.

ITEM # SUBMITTED	_____
JOB NAME	_____
LOCATION	_____
ENGINEER	_____
CONTRACTOR	_____
PO#	_____ TAG _____



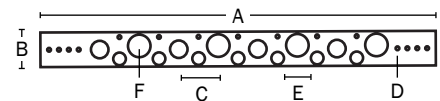
521-118



521-810



521-126



Made in China

### Create Item Number

#### 521-A

e.g. **521-118**: copper-plated stub out bracket with 1/2" holes on 2" centers

#### BRACKET LENGTH A

**118** = 20" (with 1/2" holes on 2" centers)

**118R** = 20" (with 1/2" extruded holes on 2" centers)

**126** = 26" (with 1/2" holes on 2" centers)

**810** = 20" (with 1/2" holes on 2" centers and 3/4" and 1" holes on 4" centers)

**820** = 20" (with 1/2" holes on 2" centers and 3/4" and 1" holes on 4" centers, extruded holes with rolled edge)