

# StrongArm™

## Stub Out Bracketing System

Patent #8,061,390



### Solid

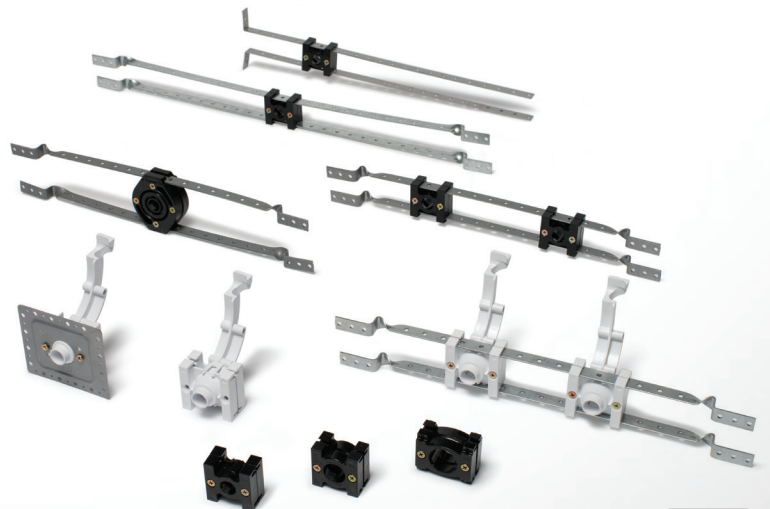
Rigidly secures any copper, PEX or CPVC CTS stub out and prevents all movement.

### Versatile

Available for 16" and 24" stud bays with either one or two pre-installed LockBlock™ devices.

### Cost Effective

Eliminates the need to solder stub outs and prevents stub outs from being damaged by other trades.



Supply | Drainage | Support

[www.siouxchief.com](http://www.siouxchief.com)

TAKE THE FIELD.



# Features & Benefits

Whether installing a copper stub out ell, or penetrating the wall with PEX, Sioux Chief's superior StrongArm™ bracketing system provides stub out solutions at rough-in.

## Solid

The LockBlock devices are designed to compress on the tube and grip the brackets preventing stub outs from moving.

## Versatile

The brackets are formed to work perpendicular to the stud and can be mounted on the face or within the stud cavity. The LockBlock is ideal for any 1/2", 3/4" or 1" copper, PEX or CPVC stub out; brackets are pre-assembled and available for any size stud cavity. The PEX Bend Support LockBlock swivels 360° to accommodate 1/2" PEX coming from any direction.

### LockBlock

Rigidly secure any copper, PEX or CPVC stub out. Three sizes available: 1/2", 3/4" and 1"

### Brackets

Brackets are available for narrow (less than 10"), 16" and 24" stud bays

### Brackets

Twisted brackets mount to the face of the stud. L-bent brackets are available for mounting between the studs

### PEX Bend Support

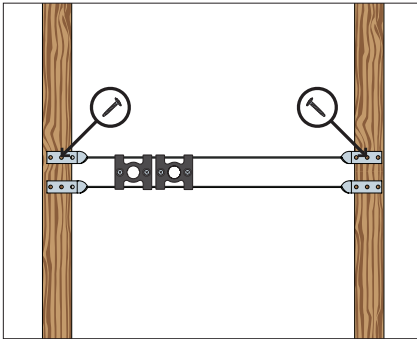
Use LockBlock with Bend Support to secure 1/2" PEX tube

### Strong Installation

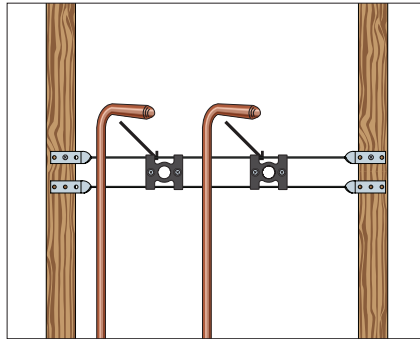
Bend the bottom bracket next to the LockBlock for ultimate rigidity and strength

# Installation

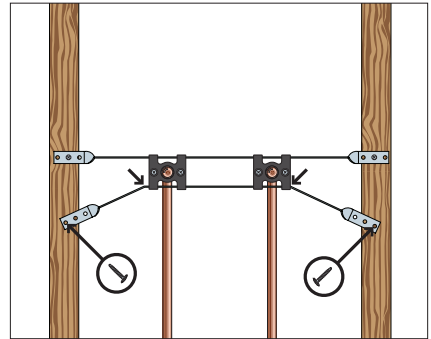
StrongArm brackets are pre-assembled.



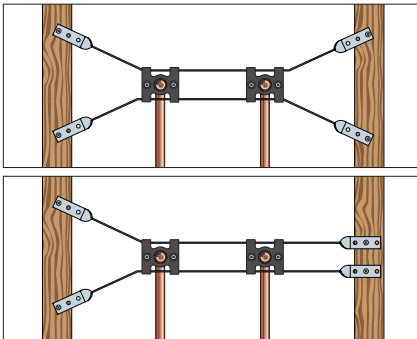
1. Secure top bracket to studs.



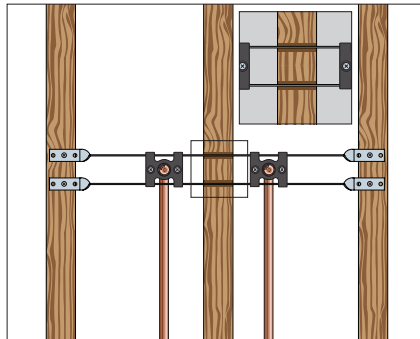
2. Slide block to stub out position. Insert stub out(s) and tighten screws.



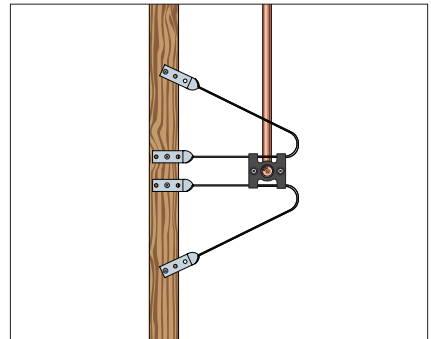
3. Bend bottom bracket and secure with screws.



4. Completed Installation and other acceptable options.

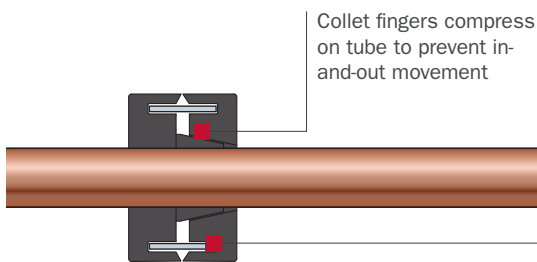


Make horizontal cut stud when stub outs are in separate stud bays.

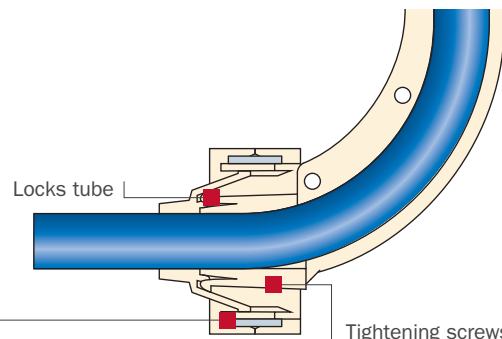


Secure both brackets from a single stud when space is limited.

## When Screws are Tightened:



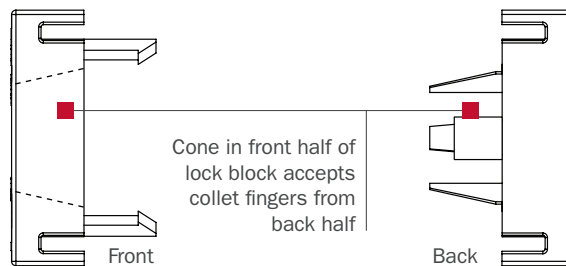
Collet fingers compress on tube to prevent in-and-out movement



Locks tube

Tightening screws locks bend support and stops the elbow from swiveling

Each LockBlock half is drawn together to prevent lateral movement on the brackets



Cone in front half of lock block accepts collet fingers from back half

Front

Back

# Additional Product Options



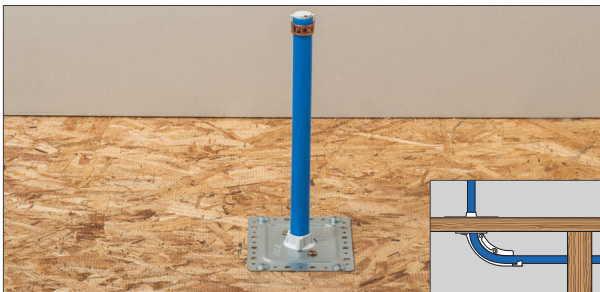
## LockBlock

Bulk 1/2" and 3/4" LockBlocks move the tube off the mounting surface when secured directly to the stud.



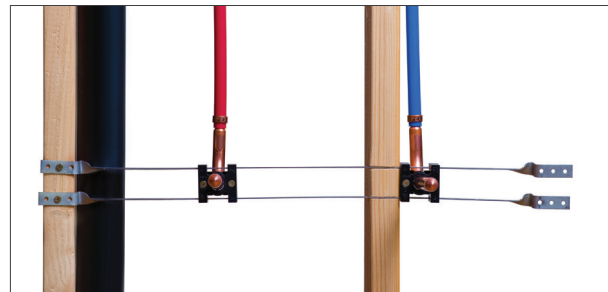
## PEX Bend Support LockBlock

In tight places, the PEX Bend Support LockBlocks can be installed directly to the stud with a 16-penny nail.



## Face Plate

Face Plates offer universal solutions when penetrating through the wall or sub-floor (riser).



## Separate Stud Bays

Make a 5/8" deep cut in the vertical stud and push the brackets into the cut when stub out is in a separate stud bay.



## StrongArm Vent Support

Pre-assembled to secure directly to the vent pipe when vertical studs are not present or conveniently located.



## Shower WallNut™ LockBlock

Specifically designed to be used with the patented Shower WallNut shower arm adapter. Visit Sioux Chief's website for more information on the Shower WallNut and how it works.



#LT3-STRONGARM

Check out our website at [www.siouxchief.com](http://www.siouxchief.com) for our current price list.



Made in the USA

B.5/15 STRONGARM

