

STRONGARM™ WITH PLASTIC BEND SUPPORT

» 525-PB SERIES

StrongArm™ with Plastic Bend Support

SPECIFICATION

Sioux Chief 525-PB series StrongArm™ with Plastic Bend Support preassembled bracketing system shall be used when penetrating a wall with ½" PEX. Brackets shall be corrosion-resistant and secured to wood or metal studs with approved hardware. System shall include plastic bend (elbow) device that swivels 360° when captured within a LockBlock™ assembly. Plastic Bend Support shall slide across pair of parallel brackets allowing installer to secure ½" PEX tube at any desired location within the stud cavity. Bracket assembly with Plastic Bend Support devices and bulk components shall be IAPMO listed.

INSTALLATION

Determine stub out height. Attach top bracket to each vertical stud. Slide the plastic bend support across brackets to desired stub out location. Insert ½" PEX through elbow to secure the tube. Insert screws into holes and tighten. When screws are fully tightened, elbow will no longer swivel and blocks will lock in the lateral position on the brackets.

For ultimate strength and rigidity, bend both brackets outward before attaching to studs.

MATERIALS

Brackets: 16-gauge, galvanized steel

Plastic bend LockBlocks™: ABS

Plastic elbow: ABS

Screw: #6 × 1" coarse-thread, zinc-plated bugle head

SAFE WORKING LOAD

25 lbs. at 140°

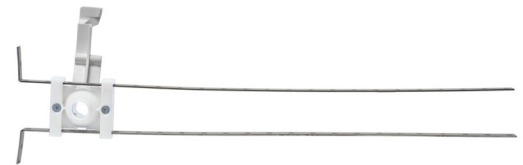
DIMENSIONS

A:	Block width	2.2712"
B:	Block height	2.1472"
C:	Bend support width	2.4"

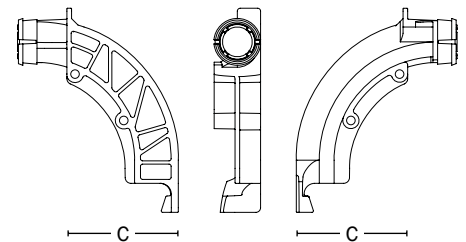
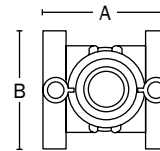
ITEM # SUBMITTED	_____
JOB NAME	_____
LOCATION	_____
ENGINEER	_____
CONTRACTOR	_____
PO#	_____ TAG _____



525-162PB



525-161PBL



Made in USA

Create Item Number

525-ABPBC

e.g. **525-162PB:** StrongArm™ for 16" stud bays with two plastic LockBlocks™ and plastic bend supports

BRACKET LENGTH A

16 = For 16" stud bay

24 = For 24" stud bay

LOCKBLOCK™ NUMBER B

1 = One plastic bend LockBlock™

2 = Two plastic bend LockBlocks™

STRONGARM™ BRACKET C

_ = Twisted

L = L-bent

ACCESSORIES

525-16T = Twisted bracket for 16" stud bay

525-24T = Twisted bracket for 24" stud bay

525-20B = L-bend bracket for 16" stud bay

525-27B = L-bend bracket for 24" stud bay

525-P2 = ½" plastic elbow (only)

525-P22 = ½" plastic bend LockBlock™ with elbow (assembly)