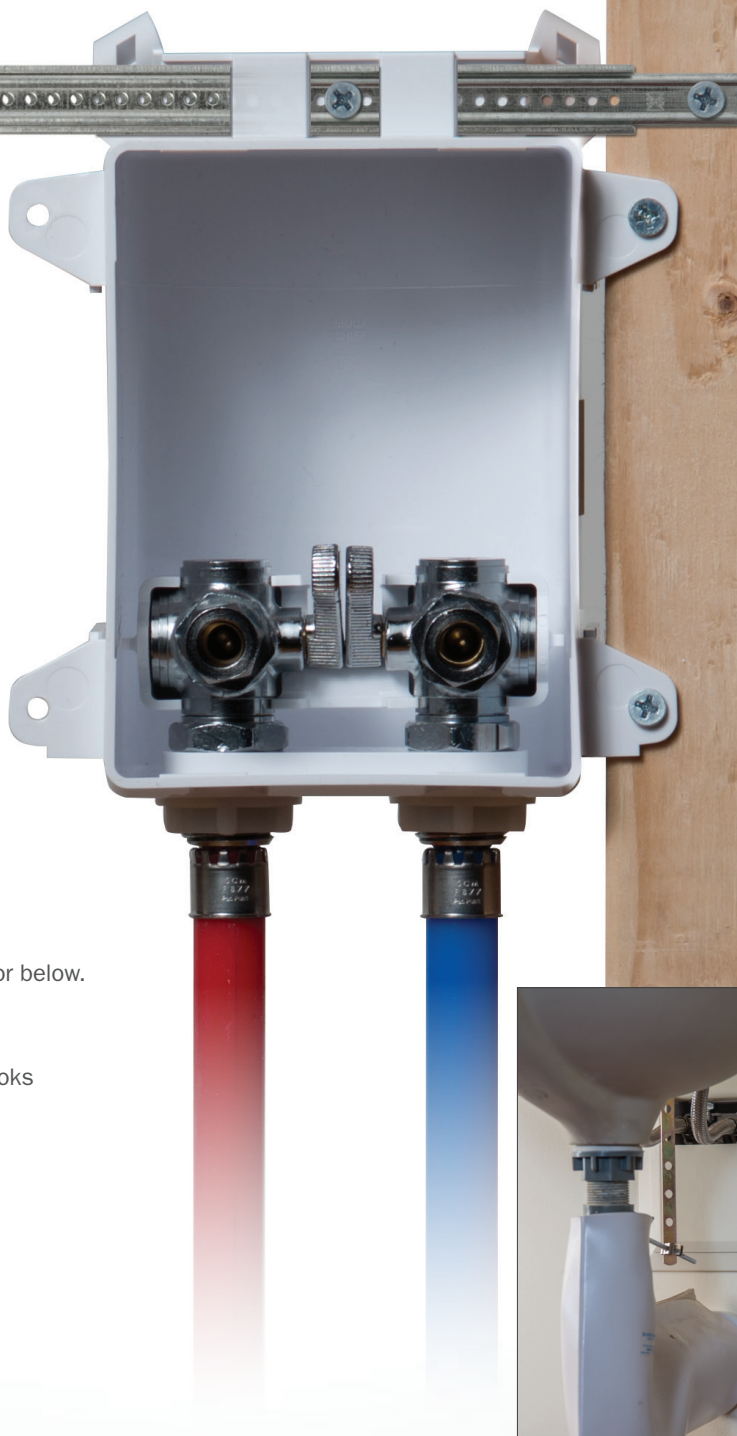


Ox Box™

»» Lavatory Outlet Box



Fast

Installs quickly with supply lines from above or below.

Standardized

One product for consistent and repeatable looks and layout.

Fixed Cost

Easy ordering, costing and billing.

Strong

Compact ABS material. Bracket included.

Recessed

Valves are protected from job site abuse.



Supply

Drainage

Support

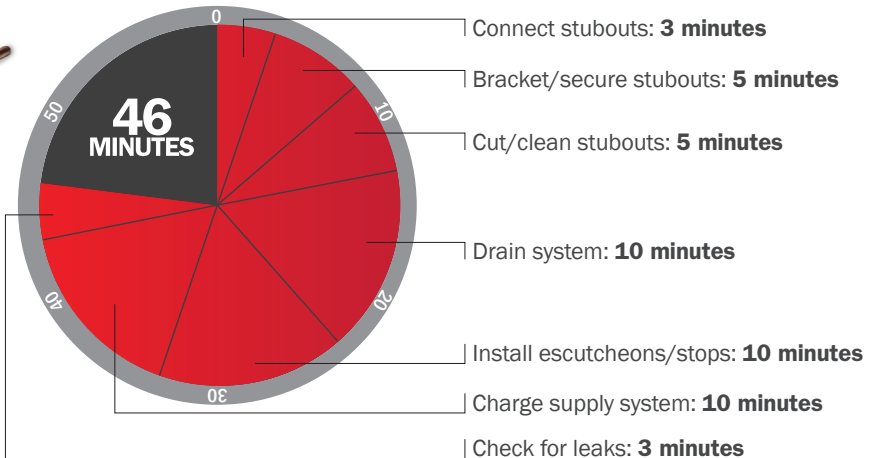
www.siouxchief.com

TAKE THE FIELD.



Installation Comparison

Traditional Installation



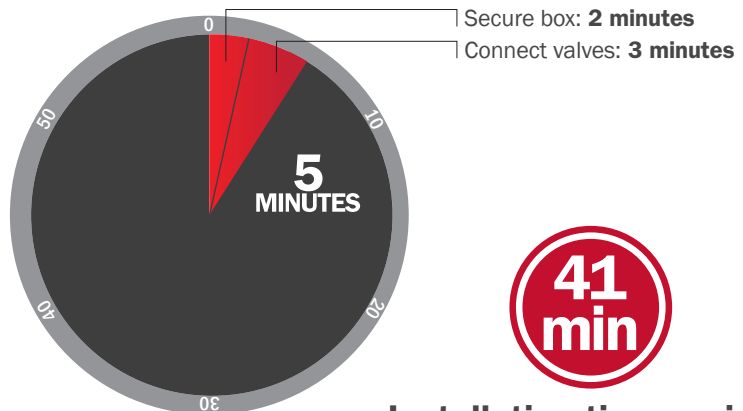
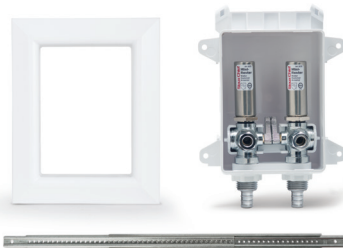
Materials

Two Stub Outs	\$ _____
Two Supply Stop Valves	\$ _____
Escutcheons	\$ _____
Bracketing Solution	\$ _____

Note: Time estimates assume all tools & materials are readily available.



Lav Box Installation



Materials

Sioux Chief Lav Box \$ _____

Installation time savings

Features & Benefits



Simple

One product, one frame. Easy sourcing, planning, costing and bidding.



Fast

Eliminates multiple touches. Eliminates the system drain-down, recharging and leak detection steps.



Savings

Material savings and labor savings transition variable costs into a known and reduced fixed cost.



Consistent

Standardized finish and valve layout every time. Every installation will look the same.



Strong

The box acts as the bracket. Added support bar protects the box during the drywall installation.



Quality

High quality valves and materials including highly durable ABS. Brass alloy is no lead, dezincification-resistant and stress-corrosion cracking-resistant.



Aesthetically Pleasing

High quality finish with beveled and contoured frame that can be painted or wall papered.



Liability vs. Warranty

Reduced chance for leak. Typical joints that are made during the finish phase are replaced by a warranted product.



OxBox System

All OxBox products have one frame size.



Maintenance

Valve seats can be replaced if fouled by debris.



Made in USA

The OxBox is made in the USA from top quality materials, including no lead valves.



Rough-In Install

Boxes eliminate valve installation at finish, reducing the chance for leak.

Installation Options



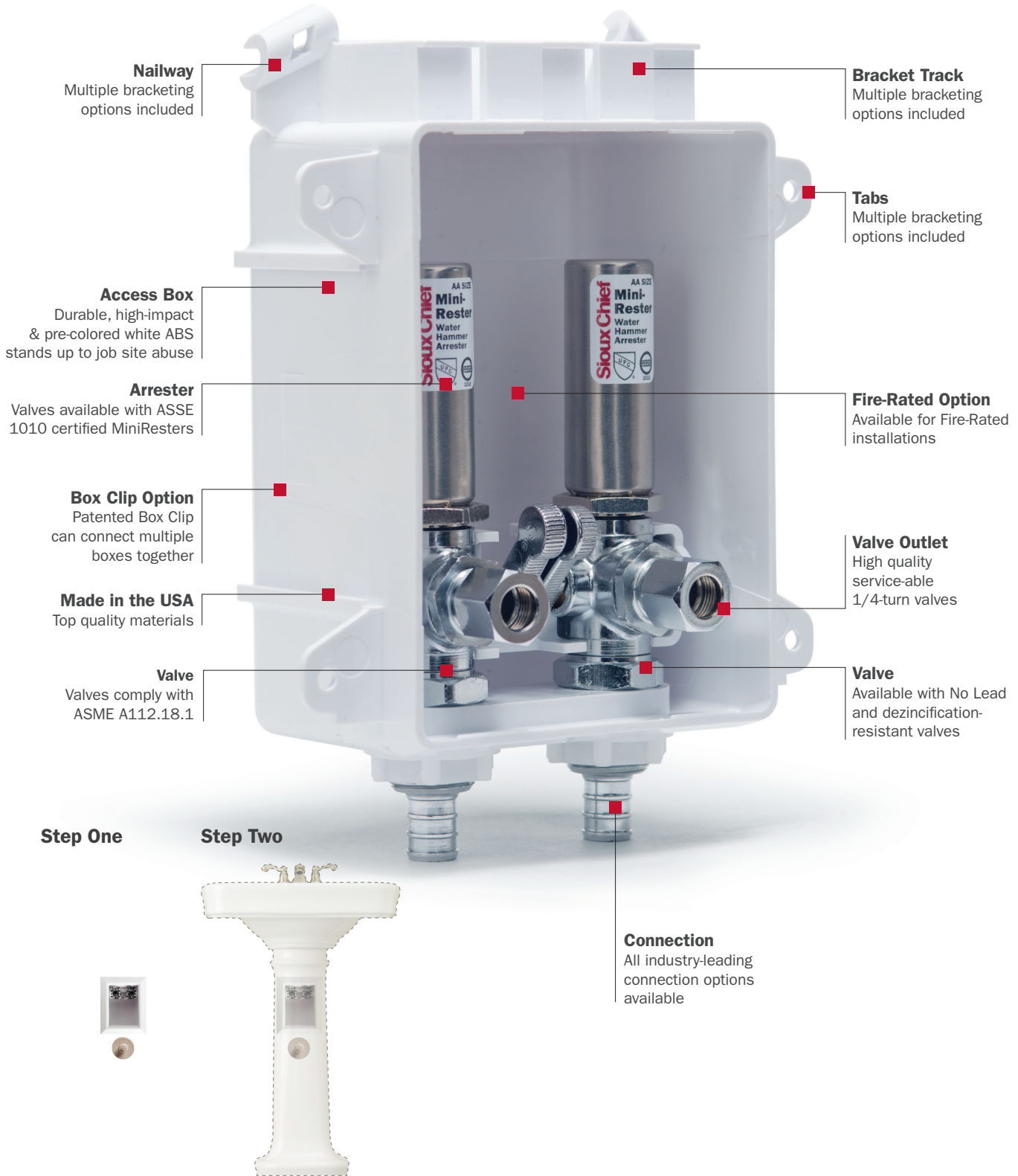
Installs on or between studs



Installs with supply from above or below

“The consistent and repeatable installations and look of the OxBox Lav Box was enticing. Its comparative time and material cost savings over traditional installations just makes sense.”

Tim Fortin
John W Danforth Co
Tonawanda, NY



Nailway
Multiple bracketing options included

Bracket Track
Multiple bracketing options included

Tabs
Multiple bracketing options included

Access Box
Durable, high-impact & pre-colored white ABS stands up to job site abuse

Fire-Rated Option
Available for Fire-Rated installations

Arrestor
Valves available with ASSE 1010 certified MiniResters

Valve Outlet
High quality service-able 1/4-turn valves

Box Clip Option
Patented Box Clip can connect multiple boxes together

Made in the USA
Top quality materials

Valve
Valves comply with ASME A112.18.1

Valve
Available with No Lead and dezincification-resistant valves

Step One

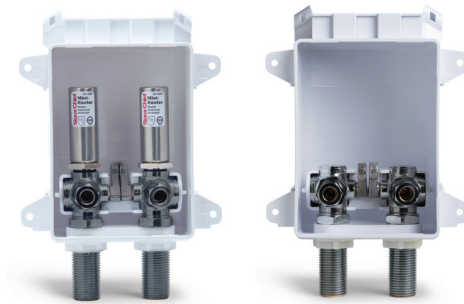
Step Two

Connection
All industry-leading connection options available

Options & Product Variations

Arrester Product or Standard

- All boxes available in arrester options



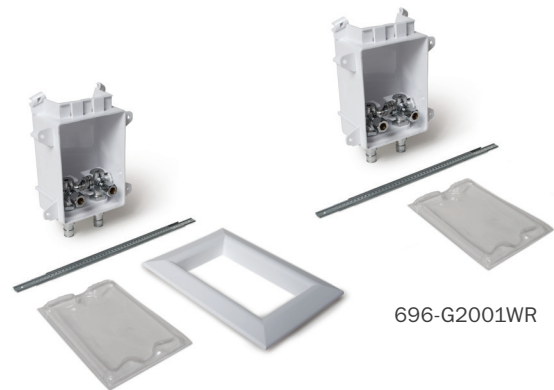
No Lead Inlet Connections

- All common connection styles available
- No lead valves are additionally dezincification-resistant and stress-corrosion cracking-resistant



Rough-In Pack or Standard Pack

- All product is either offered with frame as standard pack or without frame as rough-in pack
- Rough-in packs ship separate from frames, keeping frames clean and secure until the job's end



696-G2001WR

696-G2001WF

Fire-Rated or Regular

- Fire-rated OxBox products are certified by Intertek/Warnock Hersey to the following:

ASTM E-814

2 hours (F), 1½ hours (T)

for 2-hour design

1 hour (F), 31 min (T)

for 1-hour design

UL 1479

ASTM E-119

2 hours (F), 1½ hours (T)

for 2-hour design

1 hour (F), 31 min (T)

for 1-hour design

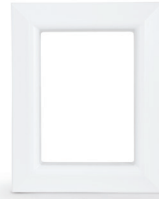
CAN/ULC S115



Accessories

Frame & Frame Inserts

- The single frame is the same size for all OxBox access boxes
- Notched frame insert conceals the valves and inhibits tampering of valves, leaving hose access
- Frame and frame inserts can be painted or wall-papered to match room decor



696-1F



696-SC



696-SC1

Frame Extensions

- Add 1/2" of additional depth per extension
- Frame extensions can be stacked
- Perfect for attaching frame past the gap between the wall and cabinet back



696-EX

Caps

- Protect valves from undesired operation
- Brass caps with gasket for testing and valve operation protection



696-C1

Debris Cover

- Provided to protect OxBox from drywall dust and debris



696-DC

Box Clip

- Use to strengthen an installation or connect multiple boxes
- Tab folds into metal stud cavity for added rigidity



696-BC

Sliding Support Bracket

- Used to affix box between studs
- Provides protection from drywall installers
- Adjustable length from 9" to 18"



520-09

Application Variations & Layout Options

Kitchen Sink

- Couple Lav box with a single 3/8" compression or 3/4" hose water service box for all supply needs

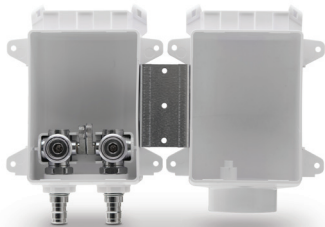


Side x Side Lav

- Perfect for residential or commercial applications
- Compact box size allows for multiple boxes & drainage in one stud bay



The OxBox System



OxBox
Washing
Machine



OxBox ONE™
Washing Machine



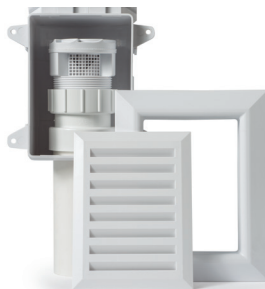
OxBox
Icemaker



OxBox
Toilet &
Dishwasher



OxBox
Gas



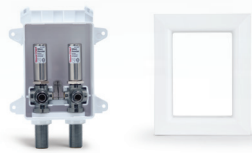
OxBox
AAV Box



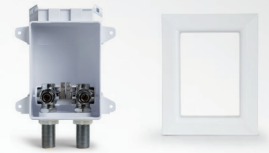
OxBox 3/4" Hose
Water Service



696-G2001MR



696-G2011MF



696-G2001MF

Buying Information

ITEM NO.	DESCRIPTION	U/M	PKG.	MIN. QTY.	CASE QTY.
OXBOX LAV BOX – STANDARD PACK, NO LEAD					
696-G2001MF	1/2" Female Sweat	EA	BI	10	10
696-G2001CF	1/2" Male CPVC	EA	BI	10	10
696-G2001WF	1/2" ASTM F1960 PEX Grip	EA	BI	10	10
696-G2001XF	1/2" ASTM F1807 PEX Crimp	EA	BI	10	10
696-G2001AF	1/2" ASTM F2080 PEX Lock	EA	BI	10	10
OXBOX LAV BOX – ROUGH-IN PACK (1), NO LEAD					
696-G2001MR	1/2" Female Sweat	EA	BI	10	10
696-G2001CR	1/2" Male CPVC	EA	BI	10	10
696-G2001WR	1/2" ASTM F1960 PEX Grip	EA	BI	10	10
696-G2001XR	1/2" ASTM F1807 PEX Crimp	EA	BI	10	10
OXBOX LAV BOX – STANDARD PACK, NO LEAD W/ MINIRESTER ARRESTERS					
696-G2011MF	1/2" Female Sweat	EA	BI	10	10
696-G2011CF	1/2" Male CPVC	EA	BI	10	10
696-G2011WF	1/2" ASTM F1960 PEX Grip	EA	BI	10	10
696-G2011XF	1/2" ASTM F1807 PEX Crimp	EA	BI	10	10
OXBOX LAV BOX – FIRE RATED STANDARD PACK, NO LEAD					
696RG2001MF	1/2" Female Sweat	EA	BI	10	10
696RG2001CF	1/2" Male CPVC	EA	BI	10	10
696RG2001WF	1/2" ASTM F1960 PEX Grip	EA	BI	10	10
696RG2001XF	1/2" ASTM F1807 PEX Crimp	EA	BI	10	10
ACCESSORIES					
696-SC1	Solid Frame Insert W/ Valve Cutout	EA	B	10	10
696-BC	Box Clip	EA	B	10	10
696-C1	3/8" O.D. Compression Cap (2 Per Bag)	EA	B	10	10
696-EX	Frame Extension	EA	B	10	10
696-1F	OxBox Single Frame	EA	B	10	10
520-09	Sliding Support Bracket	EA	B	250	250

PACKAGING:

B = Bulk
I = Individually Bar-Coded

24110 South Peculiar Drive
Peculiar, Missouri 64078
P 1.800.821.3944
F 1.800.758.5950

Build A Box: 696ABCD

A		B		C		D	
-G	No Lead	2001	Double 3/8" Supply Box Valve	M	1/2" Female Sweat	F	Standard Pack (W/ Frame)
RG	No Lead Fire Rated	2011	Double 3/8" Supply Box Valve W/ MiniRester Water Hammer Arrester	C	1/2" Male CPVC	R	Rough-In Pack (Frame Sold Separately)
				W	1/2" ASTM F1960		
				X	1/2" ASTM F1807		
				A	1/2" ASTM F2080		

