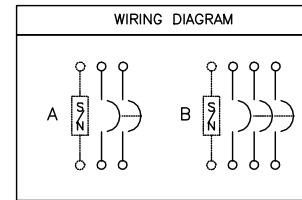


NOTES:
 FINISH - GRAY BAKED ENAMEL ELECTRODEPOSITED OVER CLEANED PHOSPHATIZED STEEL.
 UL LISTED - FILE E-136861. CSA CERTIFIED - FILE # LL89067.
 SUITABLE FOR USE AS SERVICE EQUIPMENT WHEN NEUTRAL ASSEMBLY IS INSTALLED.
 NEUTRAL - INSULATED GROUNDABLE.
 THE SHORT CIRCUIT CURRENT RATING OF THIS ENCLOSED CIRCUIT BREAKER IS EQUAL TO THE INTERRUPTING RATING, AT THE SUPPLY VOLTAGE MARKED ON THE CIRCUIT BREAKER INSTALLED.

SEISMIC NOTES:
 USE (4) 1/4" DIA GRADE 5 STEEL MOUNTING BOLTS @ HOLES AA
 MAX CONFIGURED WEIGHT 52 LB FOR THE PURPOSE OF DETERMINING
 SEISMIC ANCHORAGE REQUIREMENTS. FOR ALL OTHER APPLICATIONS,
 CONTACT SQUARE D COMPANY.

LA 400 F OR S
 NEMA/EEMAC TYPE 1

CIRCUIT BREAKER TERMINAL LUG DATA					
CIRCUIT BREAKER CATALOG NO. PREFIX	AMPERE RATING	CONDUCTORS PER PHASE	WIRE SIZE (AWG/KCMIL)		TYPE
			MAX.	MIN.	
LAL,LHL	125-400A	1	600	#1	AL OR CU
	125-400A	2	250	#1	
Q4L	250-400A	1	600	#1	AL OR CU
	250-400A	2	250	#1	
KAL,KHL	70-250A	1	350	#4	



FIELD INSTALLABLE SOLID NEUTRAL ASSEMBLIES AND GROUND KIT						
CATALOG NUMBER	MAXIMUM AMPERE RATING	NUMBER OF TERMINALS	CONDUCTORS PER PHASE	WIRE SIZE (AWG)		TYPE
				MAX.	MIN.	
SN225KA	225A	2	1	300	#4	AL OR CU
400SN	400A	2	1 OR 2	600	#1	AL OR CU
PK0GTA2	-	2	1	#2/0	#10	CU
				#2/0	#6	AL

KNOCKOUTS				
SYMBOL	CONDUIT SIZE		DIAMETER	
	IN	MM	IN	MM
A	.50	13	.88	22
B	.75	19	1.13	29
C	1.00	25	1.38	35
D	1.25	32	1.75	45
E	1.50	38	2.00	51
F	2.00	51	2.50	64
G	2.50	64	3.00	76
H	3.00	76	3.63	92
I	3.50	89	4.13	105

DUAL DIMENSIONS: INCHES
 MILLIMETERS

FIELD INSTALLED CIRCUIT BREAKER DATA											
CIRCUIT BREAKER CATALOG NO. PREFIX	WIRING DIA.	AMPERE RATING	UL LISTED INTERRUPTING RATING RMS SYMMETRICAL AMPERES								FEDERAL SPECS. W-C-375B/GEN
			AC VOLTAGE				DC VOLTAGE				
			120	240	480Y/277	480	600	125	250	500	
LAL	A	125-400	42K	42K	30K	30K	22K	10K	10K	-	21A
	B	125-400	42K	42K	30K	30K	22K	10K	10K	-	21A
LHL	A	125-400	65K	65K	35K	35K	25K	10K	10K	-	23A
	B	125-400	65K	65K	35K	35K	25K	10K	10K	-	23A
LHL-DC	B	-	-	-	-	-	-	-	-	20K	-
Q4L	A	250-400	25K	25K	-	-	-	-	-	-	14B
	B	250-400	25K	25K	-	-	-	-	-	-	14B
KAL	A	70-250	42K	42K	25K	25K	22K	10K	10K	-	19A,20A
	B	70-250	42K	42K	25K	25K	22K	10K	10K	-	19A,20A
KHL	A	70-250	65K	65K	35K	35K	25K	10K	10K	-	23A
	B	70-250	65K	65K	35K	35K	25K	10K	10K	-	23A
KHL-DC	B	-	-	-	-	-	-	-	-	20K	-

CIRCUIT BREAKER ENCLOSURES - SEISMIC
 70-400 AMPERE
 NEMA/EEMAC TYPE 1 GENERAL PURPOSE ENCLOSURE



DWG# 3076S
 NO.