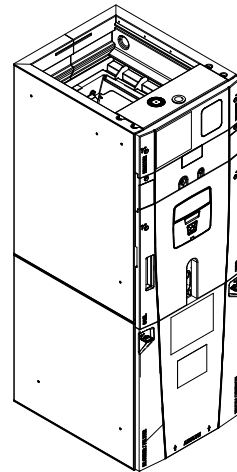


# Submittal

## Variable Speed Convertible Air Handler 2 Ton

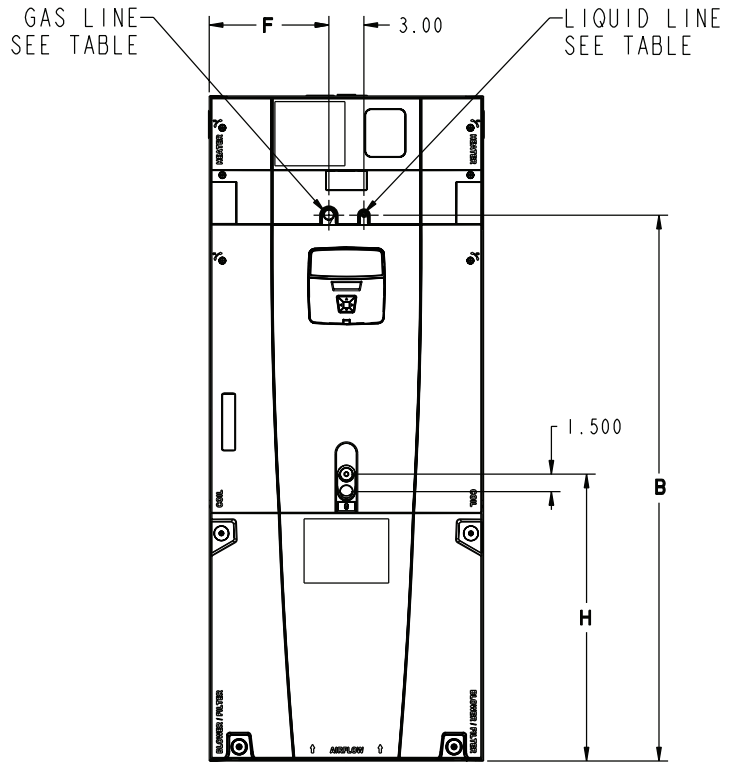
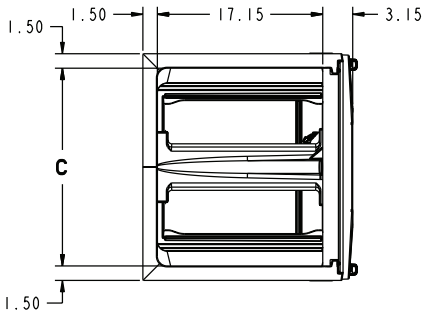
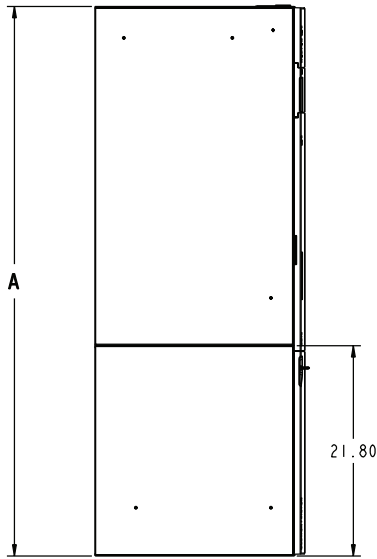
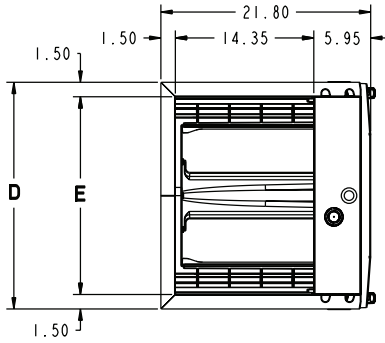
TAM9A0A24V21DB



**Note:** "Graphics in this document are for representation only. Actual model may differ in appearance."

**Note:** For use with BAYEA series heaters ONLY

# TAM9 OUTLINE DRAWING



MINIMUM UNIT CLEARANCE TABLE	
	SERVICE CLEARANCE (RECOMMENDED)
SIDES	2"
FRONT	21"
BACK	0"
INLET DUCT	
OUTLET DUCT	

NOTE: THIS UNIT IS APPROVED FOR INSTALLATION CLEARANCES TO COMBUSTIBLE MATERIAL AS STATED ON THE UNIT RATING NAMEPLATE

Model Number	A	B	C	D	E	F	H	FLOW CONTROL	GAS LINE BRAZE	LIQ LINE BRAZE
TAM9A0A24V21DB	49.9	39.6	14.5	17.5	14.5	7.3	24.4	EEV	3/4	3/8

# PRODUCT SPECIFICATIONS

<b>MODEL</b>	<b>TAM9A0A24V21DB</b>
<b>RATED VOLTS/PH/HZ.</b>	200 — 230/1/60
<b>RATINGS</b> <sup>(a)</sup>	See O.D. Specifications
<b>INDOOR COIL — Type</b>	Plate Fin
Rows — F.P.I.	3 — 14
Face Area (sq. ft.)	3.67
Tube Size (in.)	3/8
Refrigerant Control	EEV
Drain Conn. Size (in.) <sup>(b)</sup>	3/4 NPT
<b>DUCT CONNECTIONS</b>	See Outline Drawing
<b>INDOOR FAN — Type</b>	Centrifugal
Diameter-Width (In.)	11 x 8
No. Used	1
Drive — No. Speeds	Direct — Variable
CFM vs. in. w.g.	See Fan Performance Table
No. Motors — H.P.	1 — 1/2
Motor Speed RPM	Variable ECM
Volts/Ph/Hz	208–230/1/60
F.L. Amps	3.0 — 4.1 <sup>(c)</sup>
<b>FILTER</b>	
Filter Furnished?	No
Type Recommended	Throwaway
No.-Size-Thickness	1 — 16 x 20 — 1 in.
<b>REFRIGERANT</b>	<b>R-410A</b>
Ref. Line Connections	Brazed
Coupling or Conn. Size-in. Gas	3/4
Coupling or Conn. Size-in. Liq.	3/8
<b>DIMENSIONS</b>	H x W x D
Crated (In.)	51 x 20 x 24.5
Uncrated	49.9 x 17.5 x 21.8
<b>WEIGHT</b>	
Shipping (Lbs.)/Net (Lbs.)	126/116

<sup>(a)</sup> These Air Handlers are AHRI certified with various Split System Air Conditioners and Heat Pumps (AHRI STANDARD 210/240).

<sup>(b)</sup> 3/4" Male Plastic Pipe (Ref.: ASTM 1785–76)

<sup>(c)</sup> Check motor nameplate for actual FLA

# PRODUCT SPECIFICATIONS

## HEATER ATTRIBUTE DATA

**Note:** Heater size must be set in Configuration Menu.

TAM9A0A24V21DB											
Heater Model No.	No. of Circuits	240 Volt					208 Volt				
		Capacity		Heater Amps per Circuit	Minimum Circuit Ampacity	Maximum Overload Protection	Capacity		Heater Amps per Circuit	Minimum Circuit Ampacity	Maximum Overload Protection
		kW	BTUH				kW	BTUH			
No Heater	0	-	-	4.1 **	5	15	-	-	4.1 **	5	15
BAYEAAC04++1	1	3.84	13100	16.0	25	25	2.88	9800	13.8	22	25
BAYEAAC05++1	1	4.80	16400	20.0	30	30	3.60	12300	17.3	27	30
BAYEAAC08++1	1	7.68	26200	32.0	45	45	5.76	19700	27.7	40	40
BAYEAAC10++1 <sup>(a)</sup>	1	9.60	32800	40.0	55	60	7.20	24600	34.6	48	50
BAYEAAC10LG3	1-3 PH	9.60	32800	23.1	34	35	7.20	24600	20.0	30	30

Note: \*\* Motor Amps

<sup>(a)</sup> Heater not qualified for 208V when installed in horizontal left position without Heat Pump

**Note:** See Product Data or Air Handler nameplate for approved combinations of Air Handlers and Heaters.

**Note:** Heater model numbers may have additional suffix digits.

# TAM9 Air Flow Performance Tables

TAM9A0A24 AIRFLOW PERFORMANCE										CONSTANT CFM MODE / CONSTANT TORQUE MODE									
OUTDOOR MULTIPLIER (TONS)	COOLING AIRFLOW SETTING		EXTERNAL STATIC PRESSURE (Constant CFM/ Torque)				HEATING AIRFLOW SETTING				AIRFLOW POWER		EXTERNAL STATIC PRESSURE						
	290 CFM/ton	350 CFM/ton	0.1	0.3	0.5	0.7	0.9	0.1	0.3	0.5	0.7	0.1	0.3	0.5	0.7				
1.5 tons	CFM	CFM	407/546	430/403	398/NA	347/NA	255/NA	290	CFM	416	426	401	330	291	134				
	Watts	Watts	22/40	51/48	77/NA	103/NA	133/NA	CFM/ton	Watts	22	49	76	101	134					
	CFM	CFM	534/630	549/531	542/360	509/NA	445/NA	350	CFM	532	550	542	507	434					
	Watts	Watts	39/57	71/68	103/73	132/NA	156/NA	CFM/ton	Watts	37	69	101	129	152					
	CFM	CFM	617/697	633/617	632/501	604/NA	559/NA	400	CFM	660	680	679	658	614					
	Watts	Watts	54/72	90/86	125/96	156/NA	181/NA	CFM/ton	Watts	62	99	136	169	197					
2 tons †	CFM	CFM	691/762	710/693	707/602	688/478	649/NA	450	CFM	690	710	709	690	651					
	Watts	Watts	72/91	111/106	148/119	183/127	212/NA	CFM/ton	Watts	69	108	145	180	208					
	CFM	CFM	593/680	613/595	607/470	583/208	527/132	290	CFM	593	613	608	582	527					
	Watts	Watts	54/68	85/81	119/90	150/94	175/138	CFM/ton	Watts	48	82	116	147	172					
	CFM	CFM	717/783	733/717	733/632	714/519	678/355	350	CFM	714	734	734	716	679					
	Watts	Watts	79/98	118/114	157/127	192/136	222/143	CFM/ton	Watts	75	115	153	189	218					
2.5 tons	CFM	CFM	810/868	827/811	827/740	813/652	782/543	400 (a)	CFM	862	881	884	874	849					
	Watts	Watts	108/128	152/146	194/161	233/173	265/182	CFM/ton	Watts	122	168	213	254	290					
	CFM	CFM	903/954	918/902	920/839	909/764	884/674	450	CFM	899	917	921	912	889					
	Watts	Watts	144/165	192/182	238/201	280/215	316/224	CFM/ton	Watts	136	184	231	273	310					
	CFM	CFM	741/820	757/759	757/681	739/582	705/452	290	CFM	738	757	758	742	707					
	Watts	Watts	86/110	126/127	166/141	202/152	232/159	CFM/ton	Watts	81	122	162	198	229					
3 tons	CFM	CFM	880/947	896/895	896/832	885/757	859/665	350	CFM	876	895	898	888	864					
	Watts	Watts	134/162	182/181	226/198	267/211	302/221	CFM/ton	Watts	127	174	220	261	297					
	CFM	CFM	996/1059	1011/1011	1014/954	1006/887	985/807	400	CFM	1064	1083	1089	1084	1066					
	Watts	Watts	188/220	241/240	291/257	336/271	375/280	CFM/ton	Watts	215	272	326	375	418					
	CFM	CFM	1120/1180	1135/1134	1137/1081	1129/1019	1108/946	450	CFM	1115	1133	1139	1133	1116					
	Watts	Watts	260/297	319/317	373/334	422/347	463/355	CFM/ton	Watts	244	304	360	410	453					
3 tons	CFM	CFM	875/943	891/891	892/891	880/751	854/659	290	CFM	871	890	894	883	859					
	Watts	Watts	132/160	179/179	224/196	265/209	300/218	CFM/ton	Watts	125	172	217	259	295					
	CFM	CFM	1045/1106	1060/1059	1063/1004	1055/939	1035/862	350	CFM	1040	1058	1064	1059	1041					
	Watts	Watts	215/248	270/268	321/285	369/299	409/308	CFM/ton	Watts	202	257	310	358	401					
	CFM	CFM	1200/1257	1212/1211	1212/1159	1200/1099	1129/1030	400	CFM	1291	1302	1300	1220	1138					
	Watts	Watts	315/354	376/374	432/390	480/402	481/409	CFM/ton	Watts	368	432	487	478	470					
TAM9A0A24	CFM	CFM	1358/1403	1333/1359	1256/1308	1177/1251	1095/1187	450	CFM	1355	1360	1286	1208	1128					
	Watts	Watts	447/484	482/502	472/517	466/527	460/531	CFM/ton	Watts	422	483	476	468	462					
<ul style="list-style-type: none"> <li>† Factory Setting</li> <li>Status LED will blink once per 100 CFM requested. In torque mode, actual airflow may be lower.</li> </ul>										<ul style="list-style-type: none"> <li>Torque mode will reduce airflow when static is above approximately 0.3" water column.</li> <li>All heating modes default to Constant CFM.</li> <li>Cooling airflow values are with wet coil, no filter</li> </ul>									
<b>TAM9A0A24 Minimum Heating Airflow Settings</b>										<b>TAM9A0A24 Minimum Heating Airflow Settings</b>									
MODEL NO.	BAYEAC04BK1 BAYEAC04LG1 BAYEAC05BK1 BAYEAC05LG1		BAYEAC08BK1 BAYEAC08LG1				BAYEAC10BK1 BAYEAC10LG1				BAYEAC10LG3		BAYEAC15BK1 BAYEAC15LG3		BAYEAC20BK1				
TAM9A0A24	638/713		638/900				675/900				600/713		-		-				
WITHOUT HEAT PUMP / WITH HP — SEE AIR HANDLER NAMEPLATE FOR APPROVED COMBINATIONS																			
(a) Factory heating default setting is 430 CFM/ton																			

# Features and Benefits

- Unique cabinet design
  - 2% or less air leakage
  - Precision applied — durable door seals
  - Specially designed air seal around refrigerant, condensate and conduit connections
  - Double wall foamed cabinet system
  - R-4.2 Insulating Value (Avg Insulating Value R-8.2)
  - No loose fiber design
  - Smooth cleanable interior design
  - Sweat eliminating design
  - Composite foamed cabinet doors
  - Water proof cabinet design
  - Integrated horizontal drain pans
  - Modular cabinet
- Multi-position up/down flow horizontal left/right
- Communicating or 24 Volt control
- Control Display Assembly (CDA) with enhanced diagnostic information and setup capability
- Side return option (sold as accessory)
- Control board protection pocket built into cabinet wall
- Pre-marked Conduit Connection Locations
- Alert port to view control board codes without door removal
- Alert code notification
- Low voltage terminal connection point
- Phillips head door fasteners
- **Vortica®** blower with polarized plug connections and integrated slide deck for easy removal
- Aluminum coil with integrated slide deck for easy removal and polarized plug connections on coil EEV
- Patented enhanced coil fin
- Electronic Expansion Valve (EEV) with low ambient and low superheat compressor protection
- Dual refrigerant compatible as shipped
- Slide in electric heaters with polarized plug connections (sold as accessory)
- Slide in hot water coils with polarized plug connections (sold as accessory)
- UVC light kit with safety switch and polarized plug connections (sold as accessory)
- Labeled panels and connections
- Molded in 1" standard filter rail
- Variable speed ECM motor
- Soft start fan motor operation
- **Comfort R™** mode
- Built in fan delay modes
- Maximum width of 23.5"
- Compact 20.8" depth with doors removed
- Fused 24v power
- Safety door switch
- **5 Year Warranty**
- **10 Year Warranty Registered**
- **Optional Extended Warranty Available**

## About Trane and American Standard Heating and Air Conditioning

Trane and American Standard create comfortable, energy efficient indoor environments for residential applications. For more information, please visit [www.trane.com](http://www.trane.com) or [www.americanstandardair.com](http://www.americanstandardair.com).

---



The manufacturer has a policy of continuous data improvement and it reserves the right to change design and specifications without notice. We are committed to using environmentally conscious print practices.