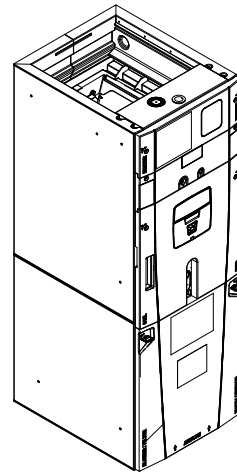


Submittal

Variable Speed Convertible Air Handler 4 Ton

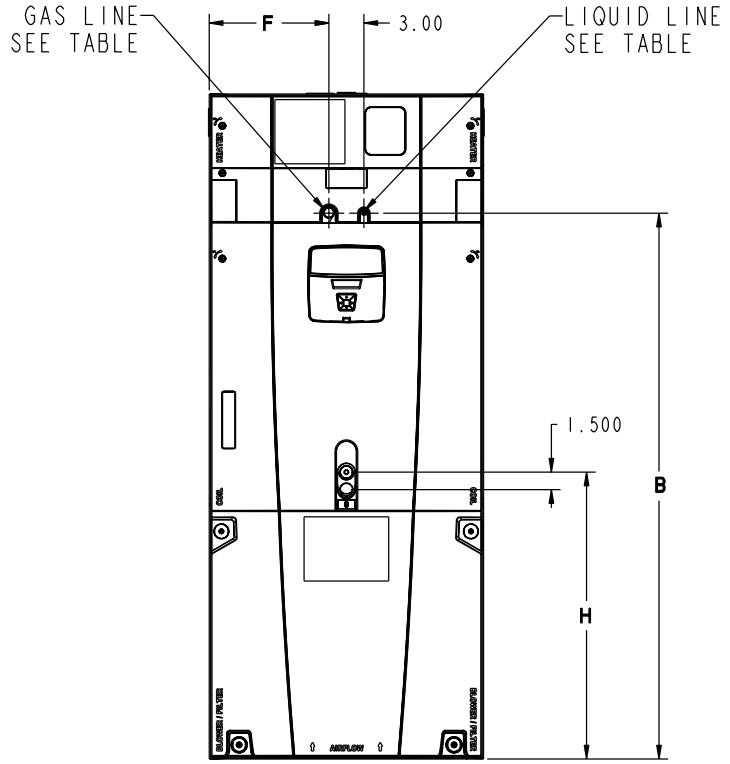
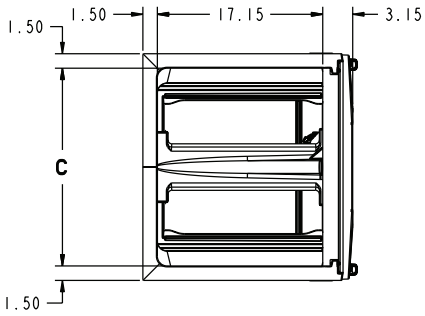
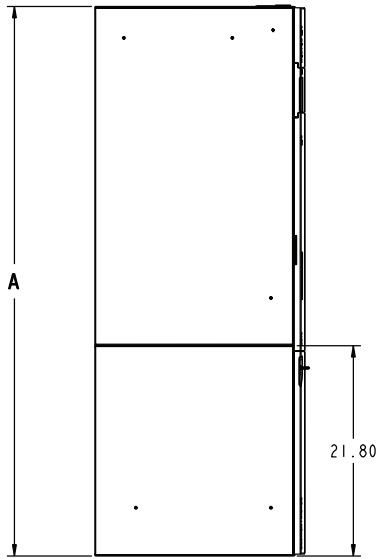
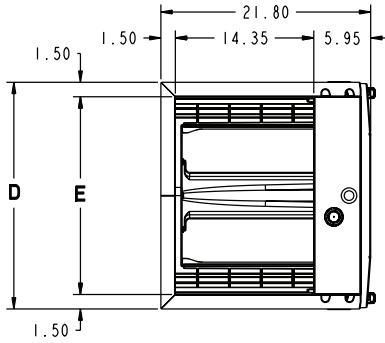
TAM9A0C48V41DB



Note: "Graphics in this document are for representation only. Actual model may differ in appearance."

Note: For use with BAYEA series heaters ONLY

TAM9 OUTLINE DRAWING



MINIMUM UNIT CLEARANCE TABLE	
	SERVICE CLEARANCE (RECOMMENDED)
SIDES	2"
FRONT	21"
BACK	0"
INLET DUCT	
OUTLET DUCT	

NOTE: THIS UNIT IS APPROVED FOR INSTALLATION CLEARANCES TO COMBUSTIBLE MATERIAL AS STATED ON THE UNIT RATING NAMEPLATE

Model Number	A	B	C	D	E	F	H	FLOW CONTROL	GAS LINE BRAZE	LIQ LINE BRAZE
TAM9A0C48V41DB	61.7	51.5	20.5	23.5	20.5	10.3	24.9	EEV	7/8	3/8

PRODUCT SPECIFICATIONS

MODEL	TAM9A0C48V41DB
RATED VOLTS/PH/HZ.	200 — 230/1/60
RATINGS ^(a)	See O.D. Specifications
INDOOR COIL — Type	Plate Fin
Rows — F.P.I.	4 — 14
Face Area (sq. ft.)	5.96
Tube Size (in.)	3/8
Refrigerant Control	EEV
Drain Conn. Size (in.) ^(b)	3/4 NPT
DUCT CONNECTIONS	See Outline Drawing
INDOOR FAN — Type	Centrifugal
Diameter-Width (In.)	11 x 10
No. Used	1
Drive — No. Speeds	Direct — Variable
CFM vs. in. w.g.	See Fan Performance Table
No. Motors — H.P.	1 — 3/4
Motor Speed RPM	Variable ECM
Volts/Ph/Hz	208–230/1/60
F.L. Amps	5.0 – 6.1 ^(c)
FILTER	
Filter Furnished?	No
Type Recommended	Throwaway
No.-Size-Thickness	1 — 22 x 20 — 1 in.
REFRIGERANT	R-410A
Ref. Line Connections	Brazed
Coupling or Conn. Size-in. Gas	7/8
Coupling or Conn. Size-in. Liq.	3/8
DIMENSIONS	H x W x D
Crated (In.)	62.8 x 25.5 x 24.5
Uncrated	61.7 x 23.5 x 21.8
WEIGHT	
Shipping (Lbs.)/Net (Lbs.)	174/162

^(a) These Air Handlers are AHRI certified with various Split System Air Conditioners and Heat Pumps (AHRI STANDARD 210/240).

^(b) 3/4" Male Plastic Pipe (Ref.: ASTM 1785–76)

^(c) Check motor nameplate for actual FLA

PRODUCT SPECIFICATIONS

HEATER ATTRIBUTE DATA

Note: Heater size must be set in Configuration Menu.

TAM9A0C48V41DB											
Heater Model No.	No. of Circuits	240 Volt					208 Volt				
		Capacity		Heater Amps per Circuit	Minimum Circuit Ampacity	Maximum Overload Protection	Capacity		Heater Amps per Circuit	Minimum Circuit Ampacity	Maximum Overload Protection
		kW	BTUH				kW	BTUH			
No Heater	0	-	-	6.1 **	8	15	-	-	6.1 **	8	15
BAYEAAC04++1	1	3.84	13100	16.0	28	30	2.88	9800	13.8	25	25
BAYEAAC05++1	1	4.80	16400	20.0	33	35	3.60	12300	17.3	29	30
BAYEAAC08++1	1	7.68	26200	32.0	48	50	5.76	19700	27.7	42	45
BAYEAAC10++1	1	9.60	32800	40.0	58	60	7.20	24600	34.6	51	60
BAYEAAC10LG3	1-3 PH	9.60	32800	23.1	37	40	7.20	24600	20.0	33	35
BAYEABC15LG3	1-3 PH	14.40	42000	34.6	51	60	10.80	36900	30.0	45	45
BAYEABC15BK1 - Circuit 1 (a)	2	9.60	32800	40.0	58	60	7.20	24600	34.6	51	60
BAYEABC15BK1 - Circuit 2		4.80	16400	20.0	25	25	3.60	12300	17.3	22	25
BAYEABC20BK1 - Circuit 1 (a)	2	9.60	32800	40.0	58	60	7.20	24600	34.6	51	60
BAYEABC20BK1 - Circuit 2		9.60	32800	40.0	50	50	7.20	24600	34.6	43	45
BAYEACC25BK1 — Circuit 1 (a)	3	9.60	32800	40.0	58	60	7.20	24600	34.6	51	60
BAYEACC25BK1 — Circuit 2		9.60	32800	40.0	50	50	7.20	24600	34.6	43	45
BAYEACC25BK1 — Circuit 3		4.80	16400	20.0	25	25	3.60	12300	17.3	22	25

Note: ** Motor Amps

(a) MCA and MOP for circuit 1 contains the motor amps

Note: See Product Data or Air Handler nameplate for approved combinations of Air Handlers and Heaters.

Note: Heater model numbers may have additional suffix digits.

TAM9 Air Flow Performance Tables

OUTDOOR MULTIPLIER (TONS)	TAM9A0C48 AIRFLOW PERFORMANCE					CONSTANT CFM MODE / CONSTANT TORQUE MODE																						
	COOLING AIRFLOW SETTING	AIRFLOW POWER	EXTERNAL STATIC PRESSURE (Constant CFM / Constant Torque)					HEATING AIRFLOW SETTING	AIRFLOW POWER	EXTERNAL STATIC PRESSURE																		
			0.1	0.3	0.5	0.7	0.9			0.1	0.3	0.5	0.7	0.9														
3 tons	290 CFM/ton	CFM Watts	894 / 1018 69 / 91	900 / 897 114 / 114	896 / 767 157 / 130	886 / 622 195 / 137	871 / 445 229 / 136	290 CFM/ton	CFM Watts	900 / 893 72 / 118	893 / 883 159 / 197	864 / 230	3 tons	400 CFM/ton	CFM Watts	1067 / 1180 106 / 132	1073 / 1078 158 / 160	1072 / 972 208 / 180	1065 / 859 252 / 192	1053 / 738 292 / 194	350 CFM/ton	CFM Watts	1068 / 112 112 / 164	1070 / 1062 213 / 257	1049 / 295			
	400 CFM/ton	CFM Watts	1205 / 1314 145 / 176	1212 / 1222 203 / 206	1213 / 1128 259 / 229	1208 / 1029 309 / 244	1199 / 926 354 / 249	400 CFM/ton	CFM Watts	1207 / 154 154 / 212	1212 / 266 212 / 315	1196 / 359		3.5 tons	450 CFM/ton	CFM Watts	1343 / 1451 193 / 232	1352 / 1367 259 / 264	1355 / 1280 320 / 289	1353 / 1190 377 / 305	1346 / 1098 427 / 313	450 CFM/ton	CFM Watts	1344 / 206 206 / 270	1352 / 387 331 / 436	1344 / 436		
	350 CFM/ton	CFM Watts	1034 / 1149 98 / 123	1041 / 1044 149 / 150	1038 / 934 197 / 170	1031 / 817 240 / 181	1018 / 690 279 / 182	290 CFM/ton	CFM Watts	1034 / 103 103 / 154	1040 / 1037 202 / 244	1014 / 281			4 tons †	350 CFM/ton	CFM Watts	1228 / 1336 152 / 185	1235 / 1246 212 / 215	1236 / 1153 268 / 238	1232 / 1056 319 / 253	1224 / 955 365 / 259	350 CFM/ton	CFM Watts	1229 / 162 162 / 221	1236 / 276 276 / 326	1220 / 371	
	400 CFM/ton	CFM Watts	1389 / 1498 212 / 253	1399 / 1415 280 / 286	1403 / 1331 343 / 311	1401 / 1244 402 / 328	1395 / 1154 455 / 336	400 CFM/ton	CFM Watts	1392 / 226 226 / 293	1403 / 356 356 / 413	1394 / 465				4 tons †	450 CFM/ton	CFM Watts	1558 / 1669 290 / 343	1570 / 1592 367 / 377	1575 / 1514 439 / 404	1575 / 1434 505 / 422	1568 / 1351 563 / 432	450 CFM/ton	CFM Watts	1561 / 310 310 / 386	1572 / 457 457 / 521	1567 / 577
	290 CFM/ton	CFM Watts	1168 / 1298 133 / 170	1175 / 1205 191 / 200	1175 / 1109 244 / 223	1170 / 1010 293 / 237	1160 / 905 336 / 242	290 CFM/ton	CFM Watts	1168 / 141 141 / 198	1174 / 251 251 / 299	1157 / 341					4 tons †	350 † CFM/ton	CFM Watts	1389 / 1517 212 / 262	1399 / 1436 280 / 295	1403 / 1352 343 / 321	1401 / 1266 402 / 338	1395 / 1177 455 / 346	350 CFM/ton	CFM Watts	1392 / 226 226 / 293	1403 / 356 356 / 413
400 CFM/ton	CFM Watts	1583 / 1714 303 / 370	1595 / 1639 382 / 546	1601 / 1562 455 / 431	1600 / 1483 521 / 450	1593 / 1401 580 / 459	400 † CFM/ton	CFM Watts	1586 / 325 325 / 402	1601 / 474 474 / 538	1591 / 595	4.5 tons**	450 CFM/ton					CFM Watts	1790 / 1918 429 / 511	1800 / 184 8515 / 546	1808 / 1775 594 / 573	1793 / 1701 663 / 592	1698 / 1625 660 / 601	450 CFM/ton	CFM Watts	1794 / 459 459 / 544	1800 / 665 665 / 655	1667 / 655
290 CFM/ton	CFM Watts	1301 / 1429 177 / 222	1310 / 1344 241 / 253	1312 / 1256 300 / 278	1309 / 1165 355 / 294	1302 / 1071 404 / 302	290 CFM/ton	CFM Watts	1302 / 189 189 / 252	1311 / 310 310 / 355	1301 / 403		4.5 tons**	350 CFM/ton				CFM Watts	1558 / 1688 290 / 354	1570 / 1613 367 / 389	1575 / 1535 439 / 415	1568 / 1455 505 / 434	1568 / 1373 563 / 444	350 CFM/ton	CFM Watts	1557 / 290 290 / 367	1575 / 439 439 / 505	1569 / 563
400 CFM/ton	CFM Watts	1790 / 1918 429 / 511	1800 / 1848 515 / 546	1801 / 1775 594 / 573	1793 / 1701 663 / 592	1698 / 1625 660 / 601	400 CFM/ton	CFM Watts	1789 / 428 428 / 515	1801 / 594 594 / 663	1791 / 659			Factory Setting	450 CFM/ton			CFM Watts	2018 / 2018 605 / 605	1973 / 1973 656 / 656	1857 / 1857 645 / 645	1749 / 1749 637 / 637	1651 / 1651 631 / 631	450 CFM/ton	CFM Watts	2018 / 605 605 / 656	1863 / 643 643 / 628	1660 / 628
450 CFM/ton	CFM Watts	2018 / 2018 605 / 605	1973 / 1973 656 / 656	1857 / 1857 645 / 645	1749 / 1749 637 / 637	1651 / 1651 631 / 631	450 CFM/ton	CFM Watts	2018 / 605 605 / 656	1863 / 643 643 / 628	1660 / 628				Factory Setting	<ul style="list-style-type: none"> † Factory Setting ** Not an actual OD size Status LED will blink once per 100 CFM requested. In torque mode, actual airflow may be lower. Torque mode will reduce airflow when static is above approximately 0.4" water column. 												
<ul style="list-style-type: none"> If the air handler is applied in downflow or horizontal configurations, the airflow should not exceed 2000 CFM. Airflow above 2000 CFM could result in water blow-off. All heating modes default to Constant CFM. Cooling airflow values are with wet coil, no filter 																												

TAM9 Air Flow Performance Tables

TAM9A0C48 Minimum Heating Airflow Settings									
MODEL NO.	BAYEAA04BK1 BAYEAA04LG1 BAYEAA05BK1 BAYEAA05LG1	BAYEAA08BK1 BAYEAA08LG1	BAYEAA10BK1 BAYEAA10LG1	BAYEAA10LG3	BAYEAB015BK1	BAYEAB15LG3	BAYEAB20BK1	BAYEAC25BK1	
TAM9A0C48	1063 / 1188	1063 / 1500	1125 / 1500	1000 / 1188	1125 / 1563	1250 / 1625	1500 / 1750	1625 / 1813	
WITHOUT HEAT PUMP / WITH HP — SEE AIR HANDLER NAMEPLATE									

Features and Benefits

- Unique cabinet design
 - 2% or less air leakage
 - Precision applied — durable door seals
 - Specially designed air seal around refrigerant, condensate and conduit connections
 - Double wall foamed cabinet system
 - R-4.2 Insulating Value (Avg Insulating Value R-8.2)
 - No loose fiber design
 - Smooth cleanable interior design
 - Sweat eliminating design
 - Composite foamed cabinet doors
 - Water proof cabinet design
 - Integrated horizontal drain pans
 - Modular cabinet
- Multi-position up/down flow horizontal left/right
- Communicating or 24 Volt control
- Control Display Assembly (CDA) with enhanced diagnostic information and setup capability
- Side return option (sold as accessory)
- Control board protection pocket built into cabinet wall
- Pre-marked Conduit Connection Locations
- Alert port to view control board codes without door removal
- Alert code notification
- Low voltage terminal connection point
- Phillips head door fasteners
- **Vortica®** blower with polarized plug connections and integrated slide deck for easy removal
- Aluminum coil with integrated slide deck for easy removal and polarized plug connections on coil EEV
- Patented enhanced coil fin
- Electronic Expansion Valve (EEV) with low ambient and low superheat compressor protection
- Dual refrigerant compatible as shipped
- Slide in electric heaters with polarized plug connections (sold as accessory)
- Slide in hot water coils with polarized plug connections (sold as accessory)
- UVC light kit with safety switch and polarized plug connections (sold as accessory)
- Labeled panels and connections
- Molded in 1" standard filter rail
- Variable speed ECM motor
- Soft start fan motor operation
- **Comfort R™** mode
- Built in fan delay modes
- Maximum width of 23.5"
- Compact 20.8" depth with doors removed
- Fused 24v power
- Safety door switch
- **5 Year Warranty**
- **10 Year Warranty Registered**
- **Optional Extended Warranty Available**

About Trane and American Standard Heating and Air Conditioning

Trane and American Standard create comfortable, energy efficient indoor environments for residential applications. For more information, please visit www.trane.com or www.americanstandardair.com.



The manufacturer has a policy of continuous data improvement and it reserves the right to change design and specifications without notice. We are committed to using environmentally conscious print practices.