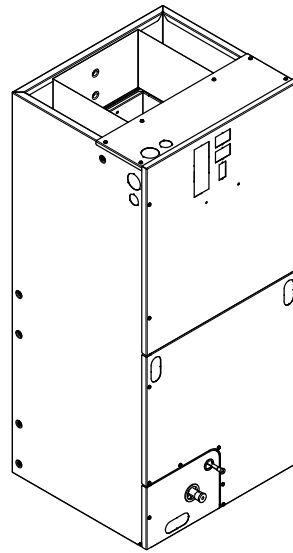


# Submittal

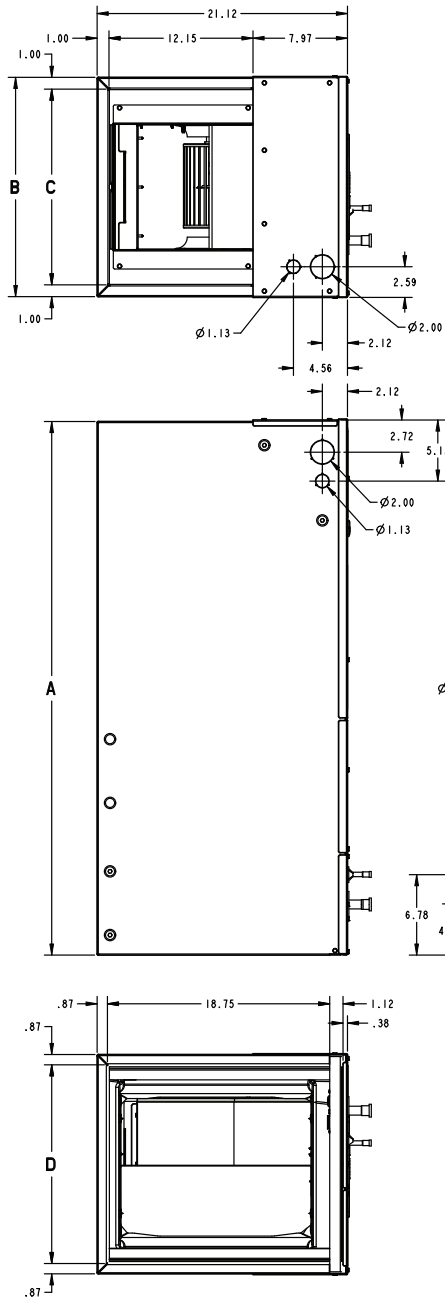
## Variable Speed Convertible Air Handler 4 Ton

TEM8A0C48V41DC



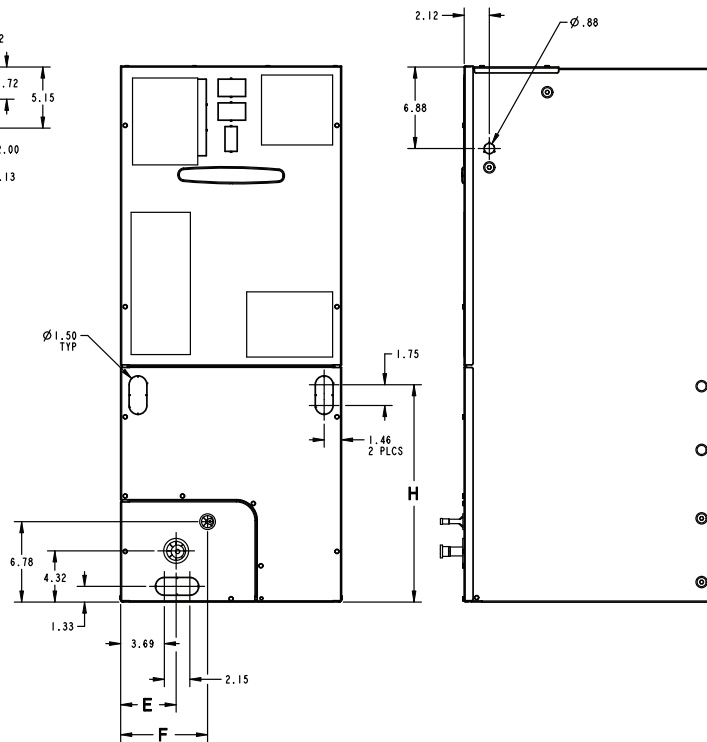
**Note:** The TEM8 series air handler is designed for installation in a closet, utility room, alcove, basement, crawlspace or attic. These versatile units are applicable to air conditioning and heat pump applications. Several models are available to meet the specific requirements of the outdoor equipment. Field installed electric resistance heaters are available.

# Outline Drawing



MINIMUM UNIT CLEARANCE TABLE	
	SERVICE CLEARANCE (RECOMMENDED)
SIDES	2"
FRONT	21"
BACK	0"
INLET DUCT	1"
OUTLET DUCT	N/A

NOTE: THIS UNIT IS APPROVED FOR INSTALLATION CLEARANCES TO COMBUSTIBLE MATERIAL AS STATED ON THE UNIT RATING NAMEPLATE



## PRODUCT DIMENSIONS

Air Handler Model	A	B	C	D	E	F	H	Flow Control	Gas Line Braze
TEM8A0C48V41DC	57.40	23.50	21.50	21.75	4.68	9.66	27.19	TXV	7/8

All dimensions are in inches

# Product Specifications

<b>MODEL</b>	TEM8A0C48V41DC
<b>RATED VOLTS/PH/HZ</b>	208-230/1/60
<b>RATINGS<sup>(a)</sup></b>	See O.D. Specifications
<b>INDOOR COIL — Type</b>	Plate Fin
Rows — F.P.I.	4 — 14
Face Area (sq. ft.)	6.88
Tube Size (in.)	3/8
Refrigerant Control	TXV
Drain Conn. Size (in.) <sup>(b)</sup>	3/4 NPT
<b>DUCT CONNECTIONS</b>	See Outline Drawing
<b>INDOOR FAN — Type</b>	Centrifugal
Diameter-Width (In.)	11 X 11
No. Used	1
Drive - No. Speeds	Direct - 16
CFM vs. in. w.g.	See Fan Performance Table
No. Motors — H.P.	1 - 3/4
Motor Speed R.P.M.	Variable
Volts/Ph/Hz	208-230/1/60

F.L. Amps	5.7
<b>FILTER</b>	
Filter Furnished? <sup>(c)</sup>	No
<b>REFRIGERANT</b>	R-410A
Ref. Line Connections	Brazed
Coupling or Conn. Size — in. Gas	7/8
Coupling or Conn. Size — in. Liq.	3/8
<b>DIMENSIONS</b>	H x W x D
Crated (In.)	57-11/16 x 27-1/2 x 25-1/2
Uncrated	57-3/8 x 23-1/2 x 21-1/8
<b>WEIGHT</b>	
Shipping (Lbs.) / Net (Lbs.)	185/174

<sup>(a)</sup> These Air Handlers are A.H.R.I certified with various Split System Air Conditioners and Heat Pumps (AHRI STANDARD 210/240). Refer to the Split System Outdoor Unit Product Data Guides for performance data.

<sup>(b)</sup> 3/4" Male Plastic Pipe (Ref: ASTM 1785-76)

<sup>(c)</sup> Remote filter required.

## Minimum Airflow CFM

TEM8A0C48V41DC		
Heater	Minimum Heater Airflow CFM	
	With Heat Pump	Without Heat Pump
BAYHTR1504BRK, BAYHTR1504LUG BAYHTR1505BRK, BAYHTR1505LUG	900	800
BAYHTR1508BRK, BAYHTR1508LUG	1200	1000
BAYHTR1510BRK, BAYHTR1510LUG	1350	1000
BAYHTR1517BRK	1400	1100
BAYHTR3510LUG	1200	1000
BAYHTR3517LUG	1400	1100
BAYHTR1523BRK	1430	1300
BAYHTR1525BRK	1850	1600

# Heater Pressure Drop Table

Airflow CFM	Number of Racks				Heater Racks	
	1	2	3	4	Heater Model	No. of Racks
	Air Pressure Drop — Inches W.G.					
1800	0.02	0.04	0.06	0.14	BAYHTR1504	1
1700	0.02	0.04	0.06	0.14	BAYHTR1505	1
1600	0.02	0.04	0.06	0.13	BAYHTR1508	2
1500	0.02	0.04	0.06	0.12	BAYHTR1510	2
1400	0.02	0.04	0.06	0.12	BAYHTR3510	3
1300	0.02	0.04	0.05	0.11	BAYHTR1517	3
1200	0.01	0.04	0.05	0.10	BAYHTR1523	4
1100	0.01	0.03	0.05	0.09	BAYHTR3517	3
1000	0.01	0.03	0.04	0.09	BAYHTR1525	4
900	0.01	0.03	0.04	0.08		
800	0.01	0.03				
700	0.01	0.02				
600	0.01	0.02				

## Subcooling Adjustment for TEM8A0C48V41 & TEM8B0C60V51

Sub-Cooling Charge Specification For AHRI Rated Performance		
OD Equipment	Up Flow / Horizontal	Down Flow
AC UNIT	OD Name Plate	OD Name Plate
HP UNIT ≤ 3.5 Tons	OD Name Plate	OD Name Plate + 4 Degrees
HP UNIT = 4 and 5 Tons	OD Name Plate	OD Name Plate

# Performance and Electrical Data

OUTDOOR MULTIPLIER (TONS)		TEM8A0C48V41DC & TEM8B0C60V51DA AIRFLOW PERFORMANCE (Constant CFM/ Constant Torque)										CONSTANT CFM MODE / CONSTANT TORQUE MODE										
		COOLING AIRFLOW SETTING			AIRFLOW POWER			EXTERNAL STATIC PRESSURE				HEATING AIRFLOW SETTING			AIRFLOW POWER			EXTERNAL STATIC PRESSURE				
		290 CFM/ton	350 CFM/ton	400 CFM/ton	450 CFM/ton	290 Watts	350 Watts	400 Watts	450 Watts	0.1	0.3	0.5	0.7	0.9	290 CFM/ton	350 CFM/ton	400 CFM/ton	450 CFM/ton	0.1	0.3	0.5	0.7
3 tons		864 / 1015	856 / 883	851 / 772	850 / 676	820 / 590	276 / 182	1030 / 866	1030 / 784	1187 / 1193	1180 / 1024	1190 / 945	380 / 268	1340 / 1343	1334 / 1334	1336 / 1343	1348 / 1348	864	856	851	843	822
		80 / 96	119 / 121	170 / 141	217 / 160	276 / 182	1030 / 866	1030 / 784	1187 / 1193	1180 / 1024	1190 / 945	380 / 268	1340 / 1343	1334 / 1334	1336 / 1343	1348 / 1348	1348 / 1348	76	119	168	219	276
		1037 / 1037	1059 / 1059	224 / 185	265 / 204	334 / 221	1030 / 866	1030 / 784	1187 / 1193	1180 / 1024	1190 / 945	380 / 268	1340 / 1343	1334 / 1334	1336 / 1343	1348 / 1348	1348 / 1348	1037	1037	1040	1039	1032
		120 / 137	170 / 164	1193 / 1193	1110 / 1024	325 / 251	1040 / 957	265 / 204	1193 / 1193	1180 / 1024	1190 / 945	380 / 268	1340 / 1343	1334 / 1334	1336 / 1343	1348 / 1348	1348 / 1348	110	158	213	271	334
		134 / 134	1354 / 1354	265 / 265	335 / 290	460 / 327	1040 / 957	265 / 204	1193 / 1193	1180 / 1024	1190 / 945	380 / 268	1340 / 1343	1334 / 1334	1336 / 1343	1348 / 1348	1348 / 1348	1184	1187	200	324	393
3.5 tons		1015 / 1147	1000 / 1025	1000 / 921	1000 / 829	1000 / 746	290 CFM/ton	1000 / 829	1000 / 746	1187 / 1193	1180 / 1024	1190 / 945	380 / 268	1340 / 1343	1334 / 1334	1336 / 1343	1348 / 1348	1003	1002	1004	1002	992
		115 / 128	160 / 155	205 / 176	255 / 194	309 / 212	290 CFM/ton	1000 / 829	1000 / 746	1187 / 1193	1180 / 1024	1190 / 945	380 / 268	1340 / 1343	1334 / 1334	1336 / 1343	1348 / 1348	103	149	203	260	322
		1210 / 1210	1210 / 1210	1210 / 1210	1210 / 1210	1210 / 1210	290 CFM/ton	1000 / 829	1000 / 746	1187 / 1193	1180 / 1024	1190 / 945	380 / 268	1340 / 1343	1334 / 1334	1336 / 1343	1348 / 1348	1209	1212	1218	1222	1224
		1341 / 1341	1231 / 1231	1136 / 1050	1050 / 1050	395 / 277	290 CFM/ton	1000 / 829	1000 / 746	1187 / 1193	1180 / 1024	1190 / 945	380 / 268	1340 / 1343	1334 / 1334	1336 / 1343	1348 / 1348	157	208	269	334	403
		165 / 188	220 / 218	280 / 241	335 / 260	400 / 349	400 CFM/ton	1000 / 829	1000 / 746	1187 / 1193	1180 / 1024	1190 / 945	380 / 268	1340 / 1343	1334 / 1334	1336 / 1343	1348 / 1348	1384	1386	1393	1397	1402
4 tons		1380 / 1380	1380 / 1380	1390 / 1390	1390 / 1390	1390 / 1390	450 CFM/ton	1390 / 1390	1390 / 1390	1390 / 1390	1390 / 1390	1390 / 1390	1390 / 1390	1390 / 1390	1390 / 1390	1390 / 1390	1563	1563	1566	1566	1564	
		1525 / 1525	1426 / 1426	1338 / 1338	1257 / 1257	485 / 360	450 CFM/ton	1390 / 1390	1390 / 1390	1390 / 1390	1390 / 1390	1390 / 1390	1390 / 1390	1390 / 1390	1390 / 1390	1390 / 1390	293	362	429	507	588	
		220 / 262	285 / 295	355 / 322	420 / 343	485 / 360	450 CFM/ton	1390 / 1390	1390 / 1390	1390 / 1390	1390 / 1390	1390 / 1390	1390 / 1390	1390 / 1390	1390 / 1390	1390 / 1390	1563	1563	1566	1566	1564	
		1590 / 1590	1590 / 1590	1590 / 1590	1590 / 1590	1590 / 1590	450 CFM/ton	1590 / 1590	1590 / 1590	1590 / 1590	1590 / 1590	1590 / 1590	1590 / 1590	1590 / 1590	1590 / 1590	1590 / 1590	293	362	429	507	588	
		1711 / 1711	1621 / 1621	1539 / 1464	1464 / 1464	1394 / 1394	450 CFM/ton	1590 / 1590	1590 / 1590	1590 / 1590	1590 / 1590	1590 / 1590	1590 / 1590	1590 / 1590	1590 / 1590	1590 / 1590	1563	1563	1566	1566	1564	
5 tons †		305 / 356	380 / 267	455 / 356	535 / 267	610 / 466	290 CFM/ton	1150 / 929	365 / 263	1140 / 1140	1140 / 1140	1150 / 929	365 / 263	1140 / 1140	1140 / 1140	1140 / 1140	138	188	247	309	376	
		1790 / 1790	1790 / 1790	1800 / 1800	1800 / 1800	1810 / 1810	290 CFM/ton	1150 / 929	365 / 263	1140 / 1140	1140 / 1140	1150 / 929	365 / 263	1140 / 1140	1140 / 1140	1140 / 1140	138	188	247	309	376	
		1898 / 1898	1816 / 1816	1741 / 1741	1670 / 1670	1604 / 1604	350 CFM/ton	1390 / 1390	1390 / 1390	1390 / 1390	1390 / 1390	1390 / 1390	1390 / 1390	1390 / 1390	1390 / 1390	1390 / 1390	1384	1386	1393	1397	1402	
		410 / 474	495 / 597	585 / 548	670 / 575	760 / 597	350 CFM/ton	1390 / 1390	1390 / 1390	1390 / 1390	1390 / 1390	1390 / 1390	1390 / 1390	1390 / 1390	1390 / 1390	1390 / 1390	217	275	340	412	487	
		1430 / 1430	1440 / 1440	1440 / 1440	1440 / 1440	1440 / 1440	450 CFM/ton	1440 / 1440	1440 / 1440	1440 / 1440	1440 / 1440	1440 / 1440	1440 / 1440	1440 / 1440	1440 / 1440	1440 / 1440	1563	1563	1566	1566	1564	

† Factory Setting  
 Status LED will blink once per 100 CFM requested. In torque mode, actual airflow may be lower.  
 In communicating mode, default CFM/Ton is 400.  
 Torque mode will reduce airflow when static is above approximately 0.3" water column.  
 All heating modes default to Constant CFM.  
 Cooling airflow values are with wet coil, no filter

## Performance and Electrical Data

1. See Product Data or Air Handler nameplate for approved combinations of Air Handlers and Heaters.
2. Heater model numbers may have additional suffix digits.

**Note:** Heater size needs to be set in Configuration Menu.

**Table 1. Electrical Data**

TEM8A0C48V41DC, TEM8B0C60V51DA HEATER DATA											
Heater Model No.	No. of Circuits/ Phases	240 Volt					208 Volt				
		Capacity		Heater Amps per Circuit	Minimum Circuit Ampacity	Maximum Overload Protection	Capacity		Heater Amps per Circuit	Minimum Circuit Ampacity	Maximum Overload Protection
		kW	BTUH				kW	BTUH			
No Heater				5.7 *	7	15			5.7 *	7	15
BAYHTR1504BRK BAYHTR1504LUG	1/1	3.84	13100	16.0	27	30	2.88	9800	13.8	24	25
BAYHTR1505BRK BAYHTR1505LUG	1/1	4.80	16400	20.0	32	35	3.60	12300	17.3	29	30
BAYHTR1508BRK BAYHTR1508LUG	1/1	7.68	26200	32.0	47	50	5.76	19700	27.7	42	45
BAYHTR1510BRK BAYHTR1510LUG	1/1	9.60	32800	40.0	57	60	7.20	24600	34.6	50	50
BAYHTR1517BRK Circuit 1 <sup>(a)</sup>	2/1	9.60	32800	40.0	57	60	7.20	24600	34.6	50	50
BAYHTR1517BRK Circuit 2		4.80	16400	20.0	25	25	3.60	12300	17.3	22	25
BAYHTR1523BRK Circuit 1 <sup>(a)</sup>	2/1	9.60	32800	40.0	57	60	7.20	24600	34.6	50	50
BAYHTR1523BRK Circuit 2		9.60	32800	40.0	50	50	7.20	24600	34.6	43	45
BAYHTR1525BRK Circuit 1 <sup>(a)</sup>	4/1	6.00	20500	25.0	38	40	4.50	15400	21.6	34	35
BAYHTR1525BRK Circuit 2		6.00	20500	25.0	31	35	4.50	15400	21.6	27	30
BAYHTR1525BRK Circuit 3		6.00	20500	25.0	31	35	4.50	15400	21.6	27	30
BAYHTR1525BRK Circuit 4		6.00	20500	25.0	31	35	4.50	15400	21.6	27	30
BAYHTR3510LUG	1/3	9.60	32800	23.1	35	35	7.20	24600	20.0	31	35
BAYHTR3517LUG	1/3	14.40	49100	34.6	50	50	10.80	36900	30.0	44	45

\* = Motor Amps

<sup>(a)</sup> MCA and MOP for circuit 1 contains the motor amps

# Features and Benefits

- Communicating or 24 V control
- Painted metal cabinet with captured foil face insulation
- 2% or less air leakage
- R-4.2 Insulating Value
- Multi-Position UP/Down Flow, Horizontal Left /Right
- ALL Aluminum Coil
- Electric Heaters with polarized plug connections (sold as accessory)
- R-410A Thermal Expansion Valve
- Variable Speed ECM Motor
- Low Voltage Pigtail Connections
- Draw Through Design
- Horizontal Drain Pan
- Single Color
- Fused 24V Power
- **3 year warranty**
- **10-year warranty registered**
- **Optional extended warranty available**

## About Trane and American Standard Heating and Air Conditioning

Trane and American Standard create comfortable, energy efficient indoor environments for residential applications. For more information, please visit [www.trane.com](http://www.trane.com) or [www.americanstandardair.com](http://www.americanstandardair.com).

---



The manufacturer has a policy of continuous data improvement and it reserves the right to change design and specifications without notice. We are committed to using environmentally conscious print practices.

TEM8A0C48-SUB-1E-EN 09 Mar 2022  
Supersedes TEM8A0C48-SUB-1D-EN (April 2020)

©2022