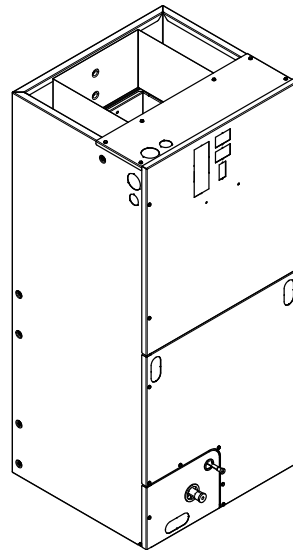


Submittal

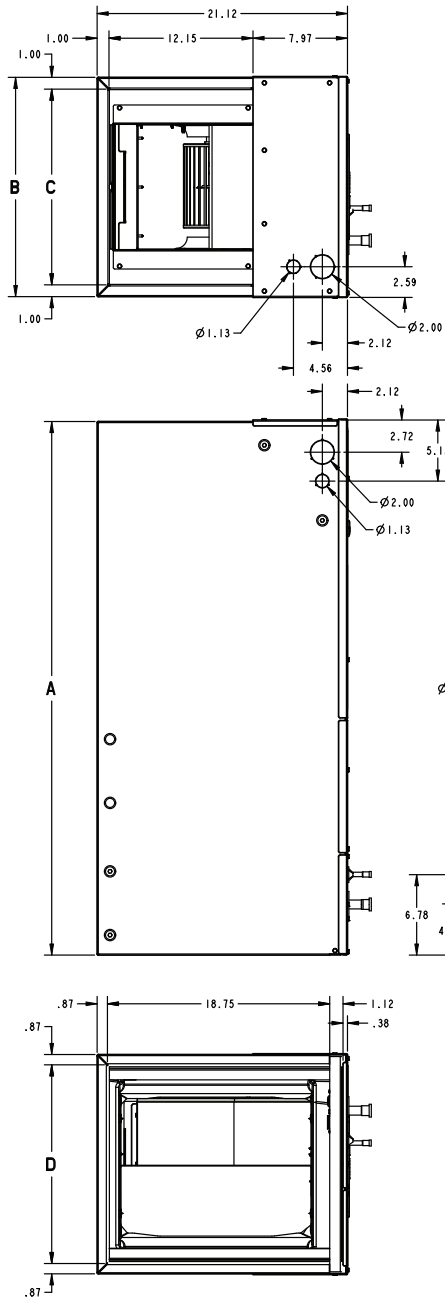
Variable Speed Convertible Air Handler 5 Ton

TEM8B0C60V51DA



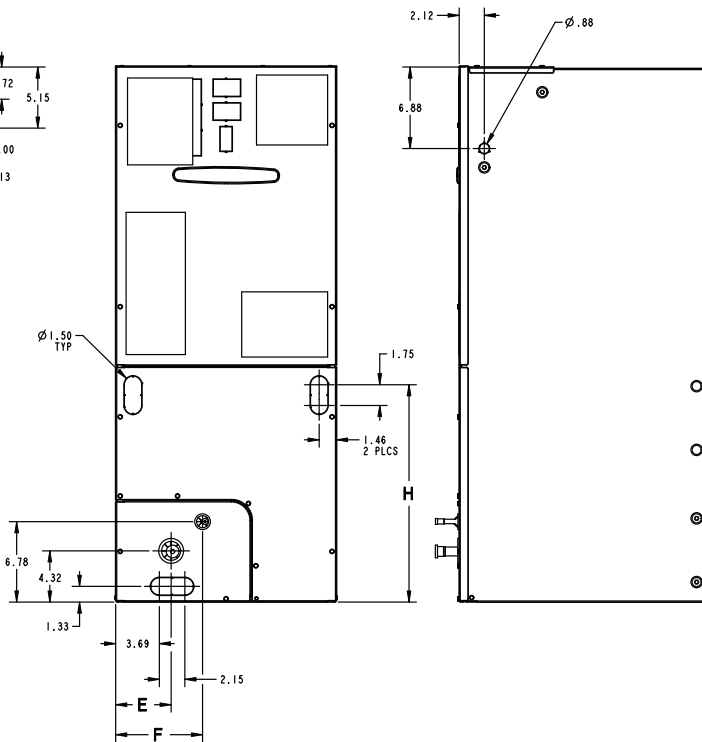
Note: The TEM8 series air handler is designed for installation in a closet, utility room, alcove, basement, crawlspace or attic. These versatile units are applicable to air conditioning and heat pump applications. Several models are available to meet the specific requirements of the outdoor equipment. Field installed electric resistance heaters are available.

Outline Drawing



MINIMUM UNIT CLEARANCE TABLE	
	SERVICE CLEARANCE (RECOMMENDED)
SIDES	2"
FRONT	21"
BACK	0"
INLET DUCT	1"
OUTLET DUCT	N/A

NOTE: THIS UNIT IS APPROVED FOR INSTALLATION CLEARANCES TO COMBUSTIBLE MATERIAL AS STATED ON THE UNIT RATING NAMEPLATE



PRODUCT DIMENSIONS

Air Handler Model	A	B	C	D	E	F	H	Flow Control	Gas Line Braze
TEM8B0C60V51DA	57.40	23.50	21.50	21.75	4.68	9.66	27.19	TXV	7/8

All dimensions are in inches

Product Specifications

MODEL	TEM8B0C60V51DA
RATED VOLTS/PH/HZ	208-230/1/60
RATINGS^(a)	See O.D. Specifications
INDOOR COIL — Type	Plate Fin
Rows — F.P.I.	4 — 14
Face Area (sq. ft.)	6.88
Tube Size (in.)	3/8
Refrigerant Control	TXV
Drain Conn. Size (in.) ^(b)	3/4 NPT
DUCT CONNECTIONS	See Outline Drawing
INDOOR FAN — Type	Centrifugal
Diameter-Width (In.)	11 X 11
No. Used	1
Drive - No. Speeds	Direct - 16
CFM vs. in. w.g.	See Fan Performance Table
No. Motors — H.P.	1 - 3/4
Motor Speed R.P.M.	Variable
Volts/Ph/Hz	208-230/1/60

F.L. Amps	5.7
FILTER	
Filter Furnished? ^(c)	No
REFRIGERANT	R-410A
Ref. Line Connections	Brazed
Coupling or Conn. Size — in. Gas	7/8
Coupling or Conn. Size — in. Liq.	3/8
DIMENSIONS	H x W x D
Crated (In.)	57-11/16 x 27-1/2 x 25-1/2
Uncrated	57-3/8 x 23-1/2 x 21-1/8
WEIGHT	
Shipping (Lbs.) / Net (Lbs.)	185/174

^(a) These Air Handlers are A.H.R.I certified with various Split System Air Conditioners and Heat Pumps (AHRI STANDARD 210/240). Refer to the Split System Outdoor Unit Product Data Guides for performance data.

^(b) 3/4" Male Plastic Pipe (Ref: ASTM 1785-76)

^(c) Remote filter required.

Minimum Airflow CFM

TEM8B0C60V51DA		
Heater	Minimum Heater Airflow CFM	
	With Heat Pump	Without Heat Pump
BAYHTR1504BRK, BAYHTR1504LUG BAYHTR1505BRK, BAYHTR1505LUG	900	800
BAYHTR1508BRK, BAYHTR1508LUG	1200	1000
BAYHTR1510BRK, BAYHTR1510LUG	1350	1000
BAYHTR1517BRK	1400	1100
BAYHTR3510LUG	1200	1000
BAYHTR3517LUG	1400	1100
BAYHTR1523BRK	1430	1300
BAYHTR1525BRK	1850	1600

Heater Pressure Drop Table

Airflow CFM	Number of Racks				Heater Racks	
	1	2	3	4	Heater Model	No. of Racks
	Air Pressure Drop — Inches W.G.					
1800	0.02	0.04	0.06	0.14	BAYHTR1504	1
1700	0.02	0.04	0.06	0.14	BAYHTR1505	1
1600	0.02	0.04	0.06	0.13	BAYHTR1508	2
1500	0.02	0.04	0.06	0.12	BAYHTR1510	2
1400	0.02	0.04	0.06	0.12	BAYHTR3510	3
1300	0.02	0.04	0.05	0.11	BAYHTR1517	3
1200	0.01	0.04	0.05	0.10	BAYHTR1523	4
1100	0.01	0.03	0.05	0.09	BAYHTR3517	3
1000	0.01	0.03	0.04	0.09	BAYHTR1525	4
900	0.01	0.03	0.04	0.08		
800	0.01	0.03				
700	0.01	0.02				
600	0.01	0.02				

Subcooling Adjustment for TEM8A0C48V41 & TEM8B0C60V51

Sub-Cooling Charge Specification For AHRI Rated Performance		
OD Equipment	Up Flow / Horizontal	Down Flow
AC UNIT	OD Name Plate	OD Name Plate
HP UNIT ≤ 3.5 Tons	OD Name Plate	OD Name Plate + 4 Degrees
HP UNIT = 4 and 5 Tons	OD Name Plate	OD Name Plate

Performance and Electrical Data

OUTDOOR MULTIPLIER (TONS)		TEM8A0C48V41DC & TEM8B0C60V51DA AIRFLOW PERFORMANCE (Constant CFM/ Constant Torque)										CONSTANT CFM MODE / CONSTANT TORQUE MODE												
		COOLING AIRFLOW SETTING			AIRFLOW POWER			EXTERNAL STATIC PRESSURE				HEATING AIRFLOW SETTING			AIRFLOW POWER			EXTERNAL STATIC PRESSURE						
		290 CFM/ton	350 CFM/ton	400 CFM/ton	450 CFM/ton	290 Watts	350 Watts	400 Watts	450 Watts	0.1	0.3	0.5	0.7	0.9	290 CFM/ton	350 CFM/ton	400 CFM/ton	450 CFM/ton	0.1	0.3	0.5	0.7	0.9	
3 tons		864 / 1015	856 / 883	851 / 772	850 / 676	820 / 590	276 / 182	1030 / 866	1030 / 784	1190 / 945	1187 / 1193	1180 / 1024	1110 / 1024	1340 / 1340	1340 / 1340	1340 / 1340	1340 / 1340	1340 / 1340	1340 / 1340	1340 / 1340	1340 / 1340	1340 / 1340	1340 / 1340	1340 / 1340
		80 / 96	119 / 121	170 / 141	217 / 160	276 / 182	1030 / 866	1030 / 784	1190 / 945	1187 / 1193	1180 / 1024	1110 / 1024	1340 / 1340	1340 / 1340	1340 / 1340	1340 / 1340	1340 / 1340	1340 / 1340	1340 / 1340	1340 / 1340	1340 / 1340	1340 / 1340	1340 / 1340	1340 / 1340
		1037 / 1179	1037 / 1059	1040 / 957	1030 / 866	1030 / 784	1190 / 945	1187 / 1193	1180 / 1024	1110 / 1024	1340 / 1340	1340 / 1340	1340 / 1340	1340 / 1340	1340 / 1340	1340 / 1340	1340 / 1340	1340 / 1340	1340 / 1340	1340 / 1340	1340 / 1340	1340 / 1340	1340 / 1340	1340 / 1340
		120 / 137	170 / 164	224 / 185	265 / 204	334 / 221	1190 / 945	1187 / 1193	1180 / 1024	1110 / 1024	1340 / 1340	1340 / 1340	1340 / 1340	1340 / 1340	1340 / 1340	1340 / 1340	1340 / 1340	1340 / 1340	1340 / 1340	1340 / 1340	1340 / 1340	1340 / 1340	1340 / 1340	1340 / 1340
		134 / 137	1207 / 1207	275 / 233	325 / 251	460 / 327	1190 / 945	1187 / 1193	1180 / 1024	1110 / 1024	1340 / 1340	1340 / 1340	1340 / 1340	1340 / 1340	1340 / 1340	1340 / 1340	1340 / 1340	1340 / 1340	1340 / 1340	1340 / 1340	1340 / 1340	1340 / 1340	1340 / 1340	1340 / 1340
3.5 tons		1334 / 1457	1336 / 1354	1343 / 1263	1340 / 1181	1340 / 1105	1340 / 1181	1340 / 1181	1340 / 1181	1340 / 1105	1340 / 1181	1340 / 1181	1340 / 1181	1340 / 1181	1340 / 1181	1340 / 1181	1340 / 1181	1340 / 1181	1340 / 1181	1340 / 1181	1340 / 1181	1340 / 1181	1340 / 1181	1340 / 1181
		205 / 232	265 / 265	335 / 290	395 / 310	460 / 327	1190 / 945	1187 / 1193	1180 / 1024	1110 / 1024	1340 / 1340	1340 / 1340	1340 / 1340	1340 / 1340	1340 / 1340	1340 / 1340	1340 / 1340	1340 / 1340	1340 / 1340	1340 / 1340	1340 / 1340	1340 / 1340	1340 / 1340	1340 / 1340
		1015 / 1147	1000 / 1025	1000 / 921	1000 / 829	1000 / 746	1190 / 945	1187 / 1193	1180 / 1024	1110 / 1024	1340 / 1340	1340 / 1340	1340 / 1340	1340 / 1340	1340 / 1340	1340 / 1340	1340 / 1340	1340 / 1340	1340 / 1340	1340 / 1340	1340 / 1340	1340 / 1340	1340 / 1340	1340 / 1340
		115 / 128	160 / 155	205 / 176	255 / 194	309 / 212	1190 / 945	1187 / 1193	1180 / 1024	1110 / 1024	1340 / 1340	1340 / 1340	1340 / 1340	1340 / 1340	1340 / 1340	1340 / 1340	1340 / 1340	1340 / 1340	1340 / 1340	1340 / 1340	1340 / 1340	1340 / 1340	1340 / 1340	1340 / 1340
		1210 / 1341	1210 / 1231	1210 / 1136	1210 / 1050	1210 / 971	1190 / 945	1187 / 1193	1180 / 1024	1110 / 1024	1340 / 1340	1340 / 1340	1340 / 1340	1340 / 1340	1340 / 1340	1340 / 1340	1340 / 1340	1340 / 1340	1340 / 1340	1340 / 1340	1340 / 1340	1340 / 1340	1340 / 1340	1340 / 1340
4 tons		165 / 188	220 / 218	280 / 241	335 / 260	485 / 349	1190 / 945	1187 / 1193	1180 / 1024	1110 / 1024	1340 / 1340	1340 / 1340	1340 / 1340	1340 / 1340	1340 / 1340	1340 / 1340	1340 / 1340	1340 / 1340	1340 / 1340	1340 / 1340	1340 / 1340	1340 / 1340	1340 / 1340	1340 / 1340
		1380 / 1503	1403 / 1403	1390 / 1314	1233 / 1233	1159 / 1159	1190 / 945	1187 / 1193	1180 / 1024	1110 / 1024	1340 / 1340	1340 / 1340	1340 / 1340	1340 / 1340	1340 / 1340	1340 / 1340	1340 / 1340	1340 / 1340	1340 / 1340	1340 / 1340	1340 / 1340	1340 / 1340	1340 / 1340	1340 / 1340
		1560 / 1667	1575 / 1575	1492 / 1416	1416 / 1416	1345 / 1345	1190 / 945	1187 / 1193	1180 / 1024	1110 / 1024	1340 / 1340	1340 / 1340	1340 / 1340	1340 / 1340	1340 / 1340	1340 / 1340	1340 / 1340	1340 / 1340	1340 / 1340	1340 / 1340	1340 / 1340	1340 / 1340	1340 / 1340	1340 / 1340
		295 / 332	365 / 369	440 / 398	515 / 421	595 / 439	1190 / 945	1187 / 1193	1180 / 1024	1110 / 1024	1340 / 1340	1340 / 1340	1340 / 1340	1340 / 1340	1340 / 1340	1340 / 1340	1340 / 1340	1340 / 1340	1340 / 1340	1340 / 1340	1340 / 1340	1340 / 1340	1340 / 1340	1340 / 1340
		1140 / 1304	1192 / 1192	1095 / 1008	1008 / 1008	1150 / 929	1190 / 945	1187 / 1193	1180 / 1024	1110 / 1024	1340 / 1340	1340 / 1340	1340 / 1340	1340 / 1340	1340 / 1340	1340 / 1340	1340 / 1340	1340 / 1340	1340 / 1340	1340 / 1340	1340 / 1340	1340 / 1340	1340 / 1340	1340 / 1340
5 tons †		145 / 175	200 / 204	255 / 227	310 / 246	365 / 263	1190 / 945	1187 / 1193	1180 / 1024	1110 / 1024	1340 / 1340	1340 / 1340	1340 / 1340	1340 / 1340	1340 / 1340	1340 / 1340	1340 / 1340	1340 / 1340	1340 / 1340	1340 / 1340	1340 / 1340	1340 / 1340	1340 / 1340	1340 / 1340
		1380 / 1525	1426 / 1338	1390 / 1257	1257 / 1183	1183 / 1183	1190 / 945	1187 / 1193	1180 / 1024	1110 / 1024	1340 / 1340	1340 / 1340	1340 / 1340	1340 / 1340	1340 / 1340	1340 / 1340	1340 / 1340	1340 / 1340	1340 / 1340	1340 / 1340	1340 / 1340	1340 / 1340	1340 / 1340	1340 / 1340
		220 / 262	285 / 295	355 / 322	420 / 343	485 / 360	1190 / 945	1187 / 1193	1180 / 1024	1110 / 1024	1340 / 1340	1340 / 1340	1340 / 1340	1340 / 1340	1340 / 1340	1340 / 1340	1340 / 1340	1340 / 1340	1340 / 1340	1340 / 1340	1340 / 1340	1340 / 1340	1340 / 1340	1340 / 1340
		1590 / 1711	1590 / 1621	1590 / 1464	1464 / 1394	1394 / 1394	1190 / 945	1187 / 1193	1180 / 1024	1110 / 1024	1340 / 1340	1340 / 1340	1340 / 1340	1340 / 1340	1340 / 1340	1340 / 1340	1340 / 1340	1340 / 1340	1340 / 1340	1340 / 1340	1340 / 1340	1340 / 1340	1340 / 1340	1340 / 1340
		305 / 356	380 / 267	455 / 356	535 / 267	610 / 466	1190 / 945	1187 / 1193	1180 / 1024	1110 / 1024	1340 / 1340	1340 / 1340	1340 / 1340	1340 / 1340	1340 / 1340	1340 / 1340	1340 / 1340	1340 / 1340	1340 / 1340	1340 / 1340	1340 / 1340	1340 / 1340	1340 / 1340	1340 / 1340

† Factory Setting
 Status LED will blink once per 100 CFM requested. In torque mode, actual airflow may be lower.
 In communicating mode, default CFM/Ton is 400.
 Torque mode will reduce airflow when static is above approximately 0.3" water column.
 All heating modes default to Constant CFM.
 Cooling airflow values are with wet coil, no filter

Performance and Electrical Data

1. See Product Data or Air Handler nameplate for approved combinations of Air Handlers and Heaters.
2. Heater model numbers may have additional suffix digits.

Note: Heater size needs to be set in Configuration Menu.

Table 1. Electrical Data

TEM8A0C48V41DC, TEM8B0C60V51DA HEATER DATA											
Heater Model No.	No. of Circuits/ Phases	240 Volt					208 Volt				
		Capacity		Heater Amps per Circuit	Minimum Circuit Ampacity	Maximum Overload Protection	Capacity		Heater Amps per Circuit	Minimum Circuit Ampacity	Maximum Overload Protection
		kW	BTUH				kW	BTUH			
No Heater				5.7 *	7	15			5.7 *	7	15
BAYHTR1504BRK BAYHTR1504LUG	1/1	3.84	13100	16.0	27	30	2.88	9800	13.8	24	25
BAYHTR1505BRK BAYHTR1505LUG	1/1	4.80	16400	20.0	32	35	3.60	12300	17.3	29	30
BAYHTR1508BRK BAYHTR1508LUG	1/1	7.68	26200	32.0	47	50	5.76	19700	27.7	42	45
BAYHTR1510BRK BAYHTR1510LUG	1/1	9.60	32800	40.0	57	60	7.20	24600	34.6	50	50
BAYHTR1517BRK Circuit 1 ^(a)	2/1	9.60	32800	40.0	57	60	7.20	24600	34.6	50	50
BAYHTR1517BRK Circuit 2		4.80	16400	20.0	25	25	3.60	12300	17.3	22	25
BAYHTR1523BRK Circuit 1 ^(a)	2/1	9.60	32800	40.0	57	60	7.20	24600	34.6	50	50
BAYHTR1523BRK Circuit 2		9.60	32800	40.0	50	50	7.20	24600	34.6	43	45
BAYHTR1525BRK Circuit 1 ^(a)	4/1	6.00	20500	25.0	38	40	4.50	15400	21.6	34	35
BAYHTR1525BRK Circuit 2		6.00	20500	25.0	31	35	4.50	15400	21.6	27	30
BAYHTR1525BRK Circuit 3		6.00	20500	25.0	31	35	4.50	15400	21.6	27	30
BAYHTR1525BRK Circuit 4		6.00	20500	25.0	31	35	4.50	15400	21.6	27	30
BAYHTR3510LUG	1/3	9.60	32800	23.1	35	35	7.20	24600	20.0	31	35
BAYHTR3517LUG	1/3	14.40	49100	34.6	50	50	10.80	36900	30.0	44	45

* = Motor Amps

^(a) MCA and MOP for circuit 1 contains the motor amps

Features and Benefits

- Communicating or 24 V control
- Painted metal cabinet with captured foil face insulation
- 2% or less air leakage
- R-4.2 Insulating Value
- Multi-Position UP/Down Flow, Horizontal Left /Right
- ALL Aluminum Coil
- Electric Heaters with polarized plug connections (sold as accessory)
- R-410A Thermal Expansion Valve
- Variable Speed ECM Motor
- Low Voltage Pigtail Connections
- Draw Through Design
- Horizontal Drain Pan
- Single Color
- Fused 24V Power
- **3 year warranty**
- **10-year warranty registered**
- **Optional extended warranty available**

About Trane and American Standard Heating and Air Conditioning

Trane and American Standard create comfortable, energy efficient indoor environments for residential applications. For more information, please visit www.trane.com or www.americanstandardair.com.



The manufacturer has a policy of continuous data improvement and it reserves the right to change design and specifications without notice. We are committed to using environmentally conscious print practices.