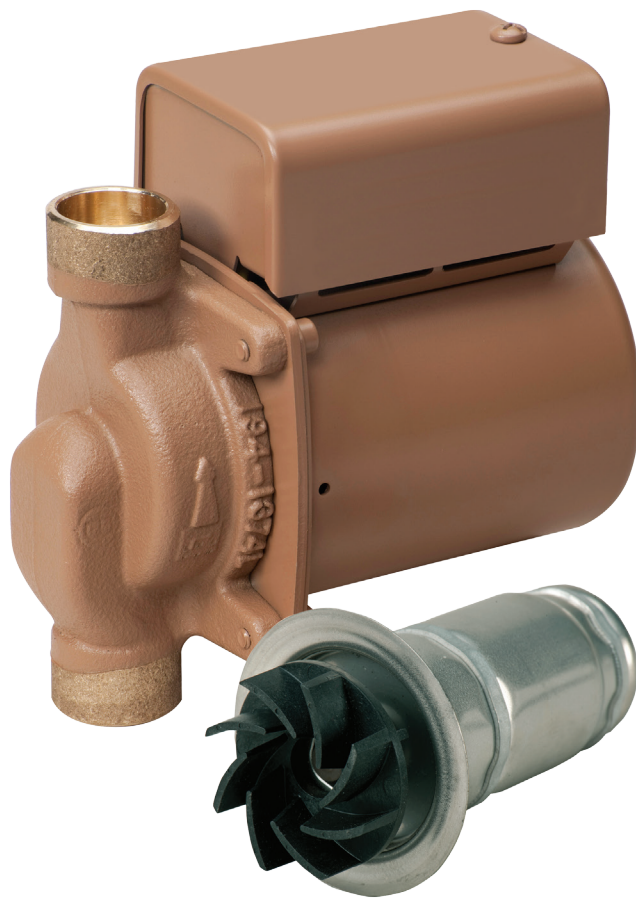


## Model 006 Cartridge Circulator

The compact Taco 006 Cartridge Circulator is designed for circulating hot and chilled fresh water in a wide range of open and closed loop applications. The unique, replaceable cartridge contains all moving parts. Replacing the cartridge rebuilds the circulator. Its self-lubricating, maintenance free design provides quiet, efficient operation and unmatched reliability. Available in low-lead Bronze sweat or Stainless Steel threaded or union connections.



Stainless Steel, Threaded



Stainless Steel, Union



Low-Lead Compliant



# Submittal Data Information Model 006 Cartridge Circulator

Submittal Data # 101-028  
Supersedes: 04/04/13

Effective: 03/20/17

## Features

- Standard high capacity output  
- Compact design
- Quiet, efficient operation
- Direct drive - Low power consumption
- Unique replaceable cartridge design  
- Field serviceable
- Self lubricating
- No mechanical seal
- Unmatched reliability  
- Maintenance free
- Low-lead Bronze sweat or Stainless Steel with threaded or union connections

## Materials of Construction

Casing (Volute):.....Low-lead Bronze or Stainless Steel  
Stator housing:.....Steel  
Cartridge:.....Stainless Steel  
Impeller: .....Non-metallic  
Shaft:.....Ceramic  
Bearings:.....Carbon  
O-Ring & Gaskets: ....EPDM  
*Chlorine resistant*

## Model Nomenclature

B - Bronze, 3/4" sweat  
BC - Bronze, 1/2" sweat, panel mount tapings  
ST - Stainless Steel, 3/4" NPT  
SC - Stainless Steel, union, panel mount tapings

## Performance Data

Flow Range: 0 – 11 GPM  
Head Range: 0 – 9.5 Feet  
Min. Fluid Temperature: 40°F (4°C)  
Max. Fluid Temperature: 220°F (104°C)  
Max. Working Pressure: 125 psi  
Connection sizes:  
1/2" swt, 3/4" swt, 3/4" NPT or union

## Certifications & Listings

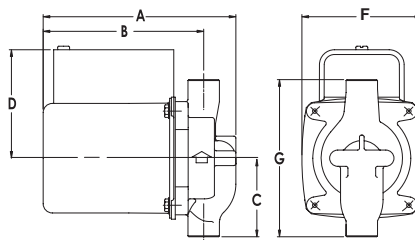


## Application

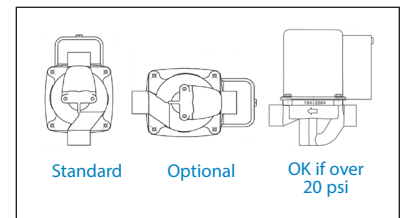
The Taco 006 is designed for circulating hot or chilled fresh water in open or closed loop applications. Typical uses include hydronic heating, domestic hot water recirculation, hydro-air heating/cooling, heat recovery units, water source heat pumps, drain down open loop Solar systems and potable water applications. The unique, replaceable cartridge contains all of the moving parts and allows for easy service instead of replacing the entire circulator. The compact, low power consumption design is ideal for high efficiency jobs.

## Pump Dimensions & Weights

Models	Conn.	A		B		C		D		F		G		Ship Wt.	
		in.	mm	in.	mm	in.	mm	in.	mm	in.	mm	in.	mm	lbs.	Kg
006-BC4	1/2" Swt.	5-1/8	130	4-1/8	105	2-1/8	54	3-1/16	78	3-15/16	84	4-1/4	108	6.0	2.7
006-B4	3/4" Swt.	5-1/8	130	4-1/8	105	2-3/16	56	3-1/16	78	3-15/16	84	4-3/8	111	6.0	2.7
006-ST4	3/4" NPT	5-5/8	143	4-7/8	124	2	51	3-1/16	78	3-15/16	84	4	102	6.0	2.7
006-SC4-1	Union	5-5/32	131	4-11/32	110	2-31/32	76	3-1/16	78	3-15/16	84	5-15/16	151	6.0	2.7



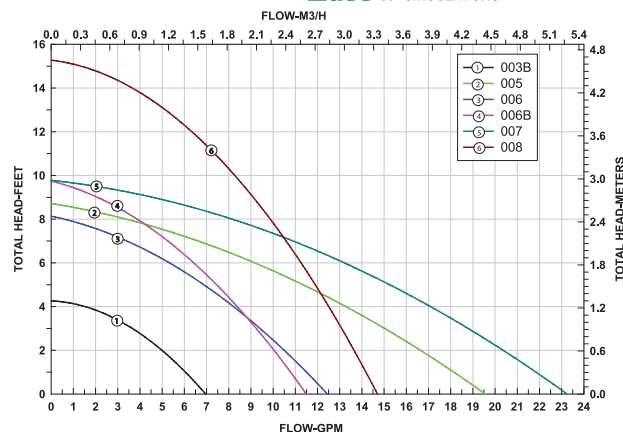
## Mounting Positions



## Electrical Data

Model	Volts	Hz	Ph	Amps	RPM	HP
All 006 Models	115	60	1	.52	3250	1/40
Motor Type	Permanent Split Capacitor Impedance Protected					
Motor Options	220/50/1, 220/60/1, 230/60/1, 100/110/50/60/1					

## Performance Field - 60Hz 006 CIRCULATORS



Taco Inc., 1160 Cranston Street, Cranston, RI 02920 / (401) 942-8000 / Fax (401) 942-2360  
Taco (Canada) Ltd., 8450 Lawson Road, Unit #3, Milton, Ontario L9T 0J8 / (905) 564-9422 / Fax (905) 564-9436